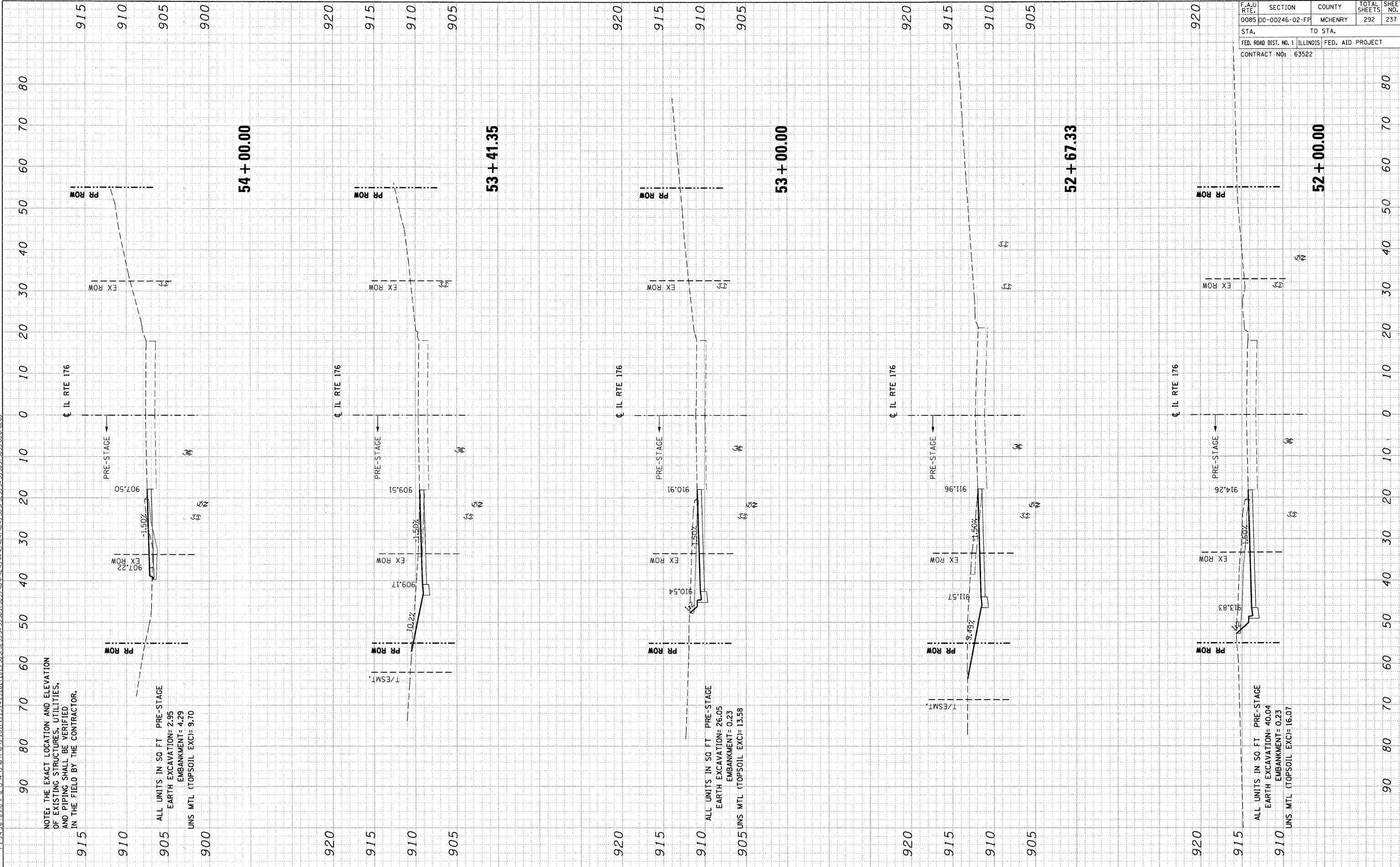


F.A.U. RTE.	SECTION	COUNTY	TOTAL SHEETS	SHEET NO.
0085	00-00246-02-FP	MCHENRY	292	237
STA.		TO STA.		
FED. ROAD DIST. NO. 1		ILLINOIS FED. AID PROJECT		
CONTRACT NO: 63522				

FINAL SURVEY	BY	DATE
NOTED		
PLOTTED		
TEMPLATE		
AREAS		
CHECKED		

ORIGINAL SURVEY	BY	DATE
NOTED		
PLOTTED		
TEMPLATE		
AREAS		
CHECKED		

\P\024002.DCN - \A\024002.DCN - \V\024002.DCN
 4-4-2004 15:25:39
 1 2 3 4 5 6 7 8 9 10 11 12 13 14 15 16 17 18 19 20 21 22 23 24 25 26 27 28 29 30 31 32 33 34 35 36 37 38 39 40 41 42 43 44 45 46 47 48 49 50 51 52 53 54 55 56 57 58 59 60 61 62 63



NOTE: THE EXACT LOCATION AND ELEVATION
 OF EXISTING STRUCTURES, UTILITIES,
 AND PIPING SHALL BE VERIFIED
 IN THE FIELD BY THE CONTRACTOR.

905 ALL UNITS IN 50 FT. PRE-STAGE
 EARTH EXCAVATION= 2.95
 EMBANKMENT= 4.29
 UNS MTL (TOPSOIL EXC)= 9.70

905 ALL UNITS IN 50 FT. PRE-STAGE
 EARTH EXCAVATION= 26.05
 EMBANKMENT= 0.23
 UNS MTL (TOPSOIL EXC)= 13.58

905 ALL UNITS IN 50 FT. PRE-STAGE
 EARTH EXCAVATION= 40.04
 EMBANKMENT= 0.23
 UNS MTL (TOPSOIL EXC)= 16.07