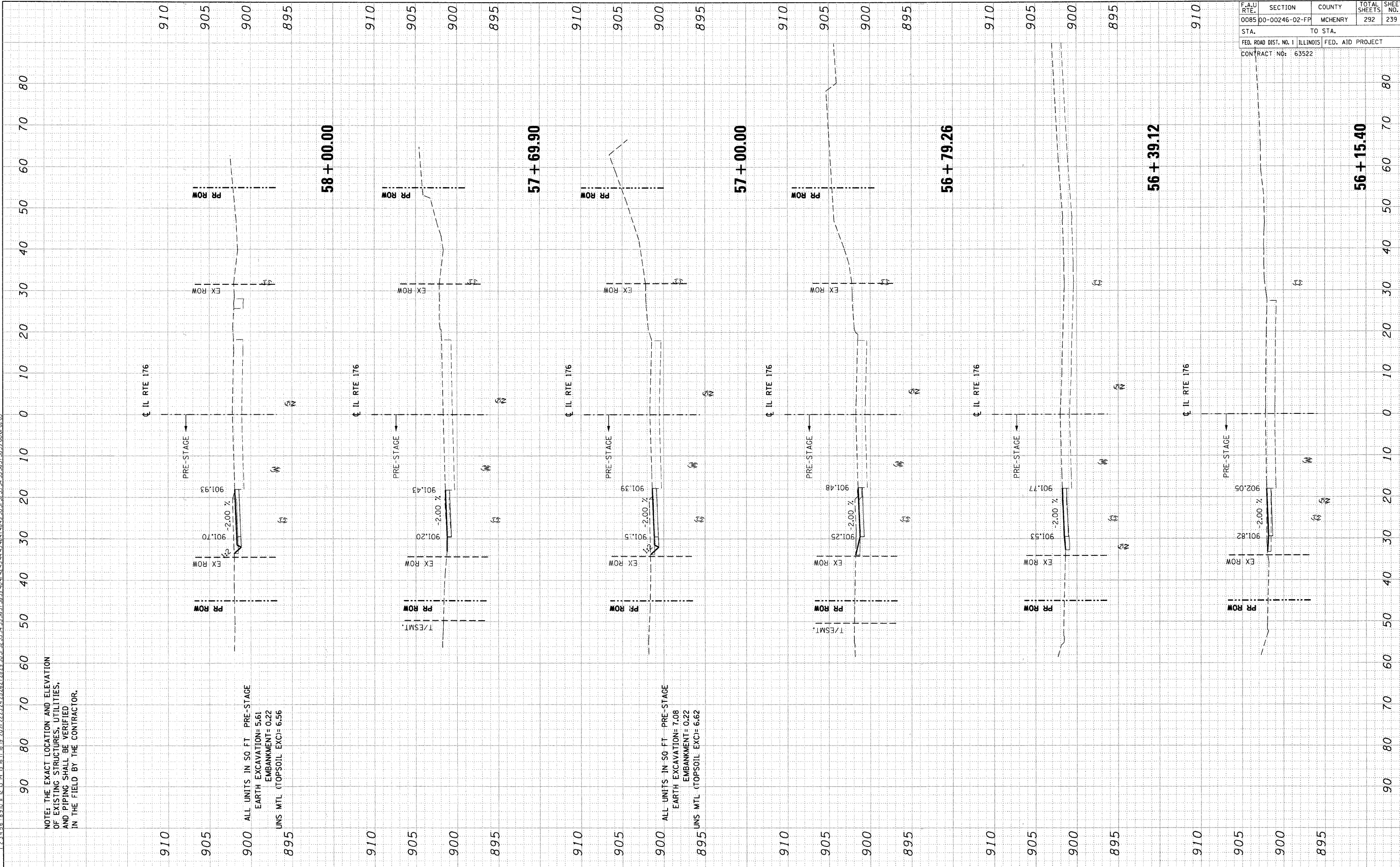


F.A.J. RTE.	SECTION	COUNTY	TOTAL SHEETS	SHEET NO.
0085	00-00246-02-FP	MCHENRY	292	239
STA.		TO STA.		
FED. ROAD DIST. NO. 1 ILLINOIS FED. AID PROJECT				
CONTRACT NO: 63522				

FINAL SURVEY	BY	DATE
REVIEWED		
NOTED		
CHECKED		

ORIGINAL SURVEY	BY	DATE
REVIEWED		
NOTED		
CHECKED		

\P\091002.DGN --\A\091002.DGN --\P\091002.DGN --\P\091002.DGN --\P\091002.DGN --\P\091002.DGN --\P\091002.DGN --\P\091002.DGN --\P\091002.DGN --\P\091002.DGN --\P\091002.DGN
 4-14-2011 5:25:39
 1.2.3.4.5.6.7.8.9.10.11.12.13.14.15.16.17.18.19.20.21.22.23.24.25.26.27.28.29.30.31.32.33.34.35.36.37.38.39.40.41.42.43.44.45.46.47.48.49.50.51.52.53.54.55.56.57.58.59.60.61.62.63



NOTE: THE EXACT LOCATION AND ELEVATION OF EXISTING STRUCTURES, UTILITIES, AND PIPING SHALL BE VERIFIED IN THE FIELD BY THE CONTRACTOR.

ALL UNITS IN 50 FT PRE-STAGE
 EARTH EXCAVATION= 5.61
 EMBANKMENT= 0.22
 UNS MTL (TOPSOIL EXC)= 6.56

ALL UNITS IN 50 FT PRE-STAGE
 EARTH EXCAVATION= 7.08
 EMBANKMENT= 0.22
 UNS MTL (TOPSOIL EXC)= 6.62