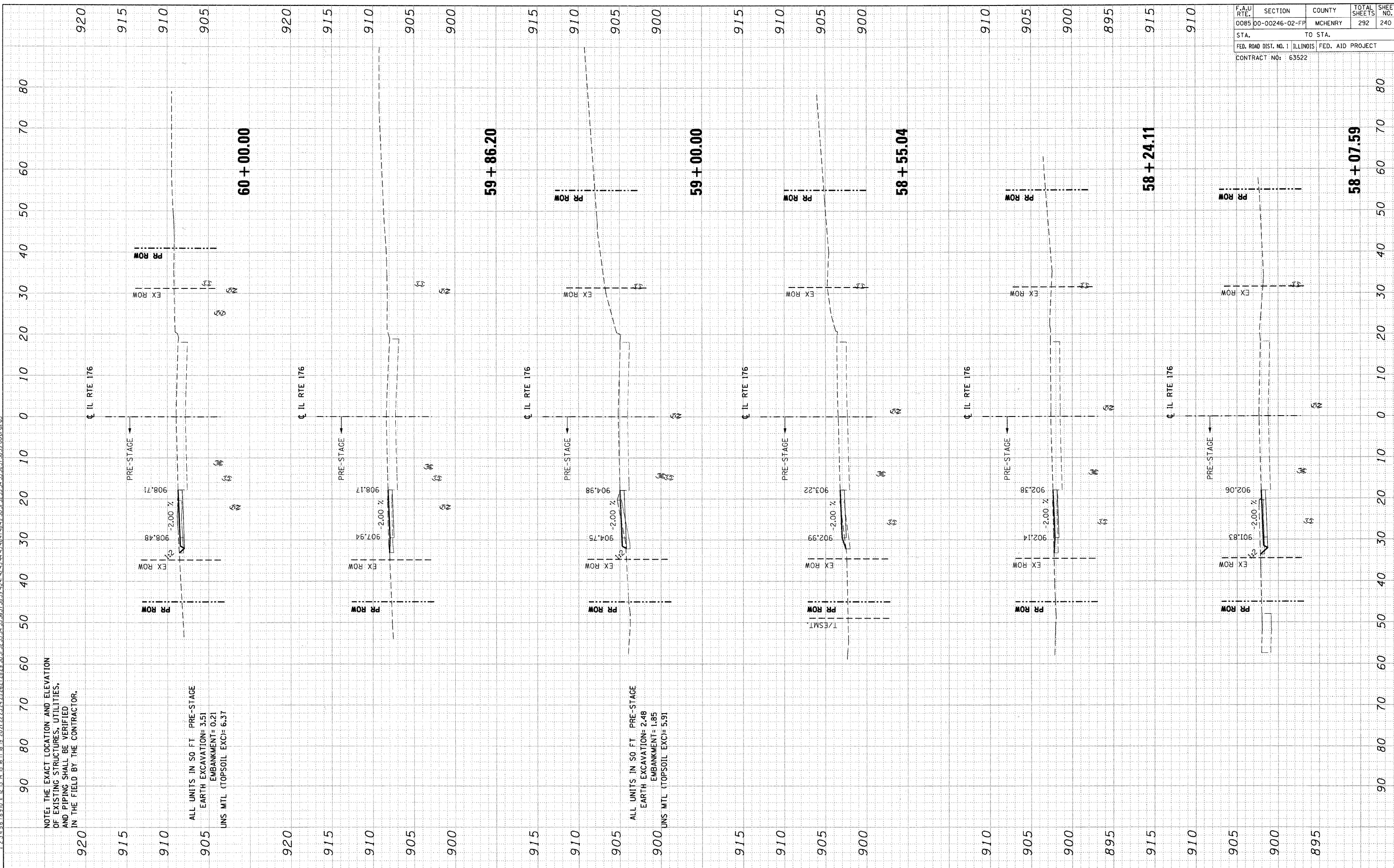


F.A.U. RTE.	SECTION	COUNTY	TOTAL SHEETS	SHEET NO.
0085	00-00246-02-FF	MCHENRY	292	240
STA.		TO STA.		
FED. ROAD DIST. NO. 1		ILLINOIS FED. AID PROJECT		
CONTRACT NO: 63522				

FINAL SURVEY	CHECKED	DATE
NOTED	PLOTTED	
AREAS	TEMPLATE	
NO.	CHECKED	

ORIGINAL SURVEY	BY	DATE
NOTED		
AREAS		
NO.		

1:PI:021002.DGN...M:021002.DGN...V:021002.DGN...CONTRACT:VIA TENC/SHEET:V502/0003.SHT
 4-14-2011 15:25:40...V5:0044.AMVAUL...ID:TRANS.07A220A...300-03/CVIL/CA02...47.43.44.45.46.47.48.49.50.51.52.53.54.55.56.57.58.59.60.61.62.63



NOTE: THE EXACT LOCATION AND ELEVATION OF EXISTING STRUCTURES, UTILITIES, AND PIPING SHALL BE VERIFIED IN THE FIELD BY THE CONTRACTOR.

ALL UNITS IN 50 FT. PRE-STAGE
 EARTH EXCAVATION= 3.51
 EMBANKMENT= 0.21
 UNS. MTL (TOPSOIL EXC)= 6.37

ALL UNITS IN 50 FT. PRE-STAGE
 EARTH EXCAVATION= 2.48
 EMBANKMENT= 1.85
 UNS. MTL (TOPSOIL EXC)= 5.91