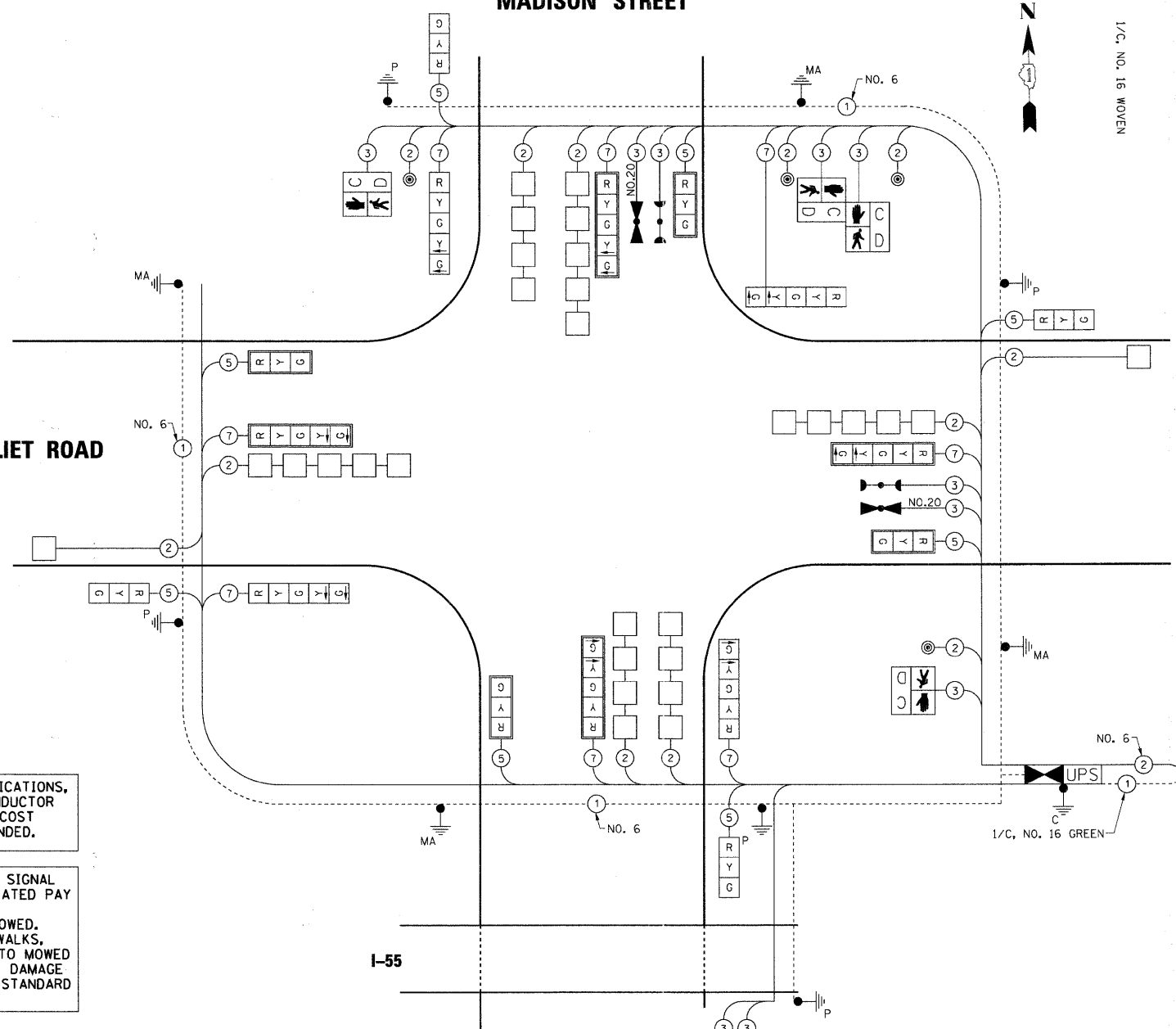


PLAN SURVEYED BY DATE
 ALIGNED BY DATE
 RT. OF WAY CHECKED BY DATE
 NO. FILE NAME

PROFILE SURVEYED BY DATE
 GRADES CHECKED BY DATE
 I.M. NOTED BY DATE
 STRUCTURE NOTATIONS CHPO
 NO.

MADISON STREET

JOLIET ROAD



SCHEDULE OF QUANTITIES

ITEM	UNIT	TOTAL
SIGN PANEL, TYPE 1	SQ FT	40
SERVICE INSTALLATION - POLE MOUNTED	EACH	1
CONDUIT IN TRENCH, 2" DIA., GALVANIZED STEEL	FOOT	604
CONDUIT IN TRENCH, 2 1/2" DIA., GALVANIZED STEEL	FOOT	98
CONDUIT IN TRENCH, 3" DIA., GALVANIZED STEEL	FOOT	41
CONDUIT IN TRENCH, 4" DIA., GALVANIZED STEEL	FOOT	64
CONDUIT PUSHED, 2" DIA., GALVANIZED STEEL	FOOT	430
CONDUIT PUSHED, 4" DIA., GALVANIZED STEEL	FOOT	365
HANDHOLE	EACH	8
HEAVY DUTY HANDHOLE	EACH	4
DOUBLE HANDHOLE	EACH	1
TRENCH AND BACKFILL FOR ELECTRICAL WORK	FOOT	803
REMOVAL OF POLE FOUNDATION	EACH	1
FULL-ACTUATED CONTROLLER AND TYPE IV CABINET	EACH	1
UNINTERRUPTABLE POWER SUPPLY	EACH	1
ELECTRIC CABLE IN CONDUIT, SIGNAL NO. 14 2C	FOOT	623
ELECTRIC CABLE IN CONDUIT, SIGNAL NO. 14 3C	FOOT	1655
ELECTRIC CABLE IN CONDUIT, SIGNAL NO. 14 5C	FOOT	1608
ELECTRIC CABLE IN CONDUIT, SIGNAL NO. 14 7C	FOOT	1676
ELECTRIC CABLE IN CONDUIT, LEAD-IN, NO. 14 1 PAIR	FOOT	2,254
ELECTRIC CABLE IN CONDUIT, SERVICE, NO. 6 2C	FOOT	50
TRAFFIC SIGNAL POST, GALVANIZED STEEL 14 FT.	EACH	1
TRAFFIC SIGNAL POST, GALVANIZED STEEL 16 FT.	EACH	3
TRAFFIC SIGNAL POST, GALVANIZED STEEL 18 FT.	EACH	1
STEEL MAST ARM ASSEMBLY AND POLE, 30 FT.	EACH	1
STEEL MAST ARM ASSEMBLY AND POLE, 34 FT.	EACH	1
STEEL MAST ARM ASSEMBLY AND POLE, 38 FT.	EACH	1
STEEL MAST ARM ASSEMBLY AND POLE, 40 FT.	EACH	1
CONCRETE FOUNDATION, TYPE A	FOOT	20
CONCRETE FOUNDATION, TYPE C	FOOT	4
CONCRETE FOUNDATION, TYPE E 30-INCH DIAMETER	FOOT	41
CONCRETE FOUNDATION, TYPE E 36-INCH DIAMETER	FOOT	13
SIGNAL HEAD, POLYCARBONATE, LED, 1-FACE, 3-SECTION, BRACKET MOUNTED	EACH	1
SIGNAL HEAD, POLYCARBONATE, LED, 1-FACE, 3-SECTION, MAST ARM MOUNTED	EACH	4
SIGNAL HEAD, POLYCARBONATE, LED, 1-FACE, 5-SECTION, BRACKET MOUNTED	EACH	1
SIGNAL HEAD, POLYCARBONATE, LED, 1-FACE, 5-SECTION, MAST ARM MOUNTED	EACH	4
SIGNAL HEAD, POLYCARBONATE, LED, 2-FACE, 1-3-SECTION, BRACKET MOUNTED	EACH	3
PEDESTRIAN SIGNAL HEAD, LED, 1-FACE, BRACKET MOUNTED WITH COUNTDOWN TIMER	EACH	2
PEDESTRIAN SIGNAL HEAD, LED, 2-FACE, BRACKET MOUNTED WITH COUNTDOWN TIMER	EACH	1
TRAFFIC SIGNAL BACKPLATE, LOUVERED, ALUMINUM	EACH	8
INDUCTIVE LOOP DETECTOR	EACH	11
DETECTOR LOOP, TYPE I	FOOT	1208
LIGHT DETECTOR	EACH	3
LIGHT DETECTOR AMPLIFIER	EACH	1
PEDESTRIAN PUSH-BUTTON	EACH	4
ELECTRIC CABLE IN CONDUIT, NO. 20 3/C, TWISTED, SHIELDED	FOOT	1,004

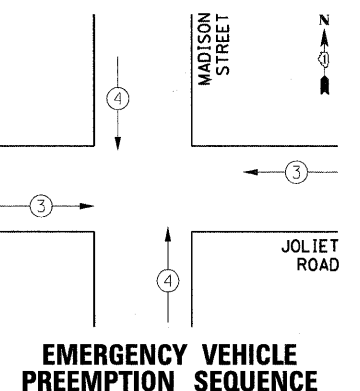
IN ACCORDANCE WITH SECTION 806 OF THE STANDARD SPECIFICATIONS, GROUNDING ELECTRODES AND THE ASSOCIATED GROUNDING CONDUCTOR WILL NOT BE MEASURED FOR PAYMENT SEPARATELY BUT THE COST SHALL BE INCLUDED IN THE COST FOR THE ITEM BEING GROUNDING.

RESTORATION OF WORK AREA. RESTORATION OF THE TRAFFIC SIGNAL WORK AREA SHALL BE INCLUDED IN THE COST OF TO THE RELATED PAY ITEM SUCH AS FOUNDATION, CONDUIT, HANDHOLE, TRENCH AND BACKFILL, ETC., AND NO EXTRA COMPENSATION SHALL BE ALLOWED. ALL ROADWAY SURFACES SUCH AS SHOULDERS, MEDIANS, SIDEWALKS, PAVEMENT, ETC. SHALL BE REPLACED IN KIND. ALL DAMAGE TO MOWED LAWNS SHALL BE REPLACED WITH AN APPROVED SOD, AND ALL DAMAGE TO UNMOWED FIELDS SHALL BE SEEDED IN ACCORDANCE WITH STANDARD SPECIFICATIONS 252 AND 250 RESPECTIVELY.

I.D.O.T TRAFFIC SIGNAL INSTALLATION ELECTRICAL SERVICE REQUIREMENTS					
TYPE	NO. LAMPS	WATTAGE		% OPERATION	TOTAL WATTAGE
		INCAND.	LED		
SIGNAL (RED)	16		17	0.50	136.0
(YELLOW)	16		25	0.25	100.0
(GREEN)	16		15	0.25	60.0
ARROW	16		12	0.10	19.2
PED SIGNAL	4		25	1.00	100
CONTROLLER	1		100	1.00	100
UPS	1		25	1.00	25
TOTAL =					540.2

ENERGY COSTS TO: VILLAGE OF BURR RIDGE
 BURR RIDGE, ILLINOIS

ENERGY SUPPLY CONTACT: DARRYL BELL
 PHONE: 630-985-0410
 COMPANY: COMMONWEALTH EDISON



EMERGENCY VEHICLE PREEMPTORS	
EMERGENCY VEHICLE PREEMPTORS	3 4
MOVEMENT	← → ↑ ↓

