

STATE OF ILLINOIS  
DEPARTMENT OF TRANSPORTATION  
DIVISION OF HIGHWAYS

# PLANS FOR PROPOSED FEDERAL AID HIGHWAY

F.A.U. 0186 (ILLINOIS ROUTE 134)  
FROM MacGILLIS DRIVE (VILLAGE OF ROUND LAKE)  
TO EAST ROUND LAKE PARK VILLAGE LIMIT  
SIDEWALK IMPROVEMENT  
SECTION 10-00032-00-SW  
PROJECT CMM-9003 (614)  
JOB C-91-457-10  
LAKE COUNTY



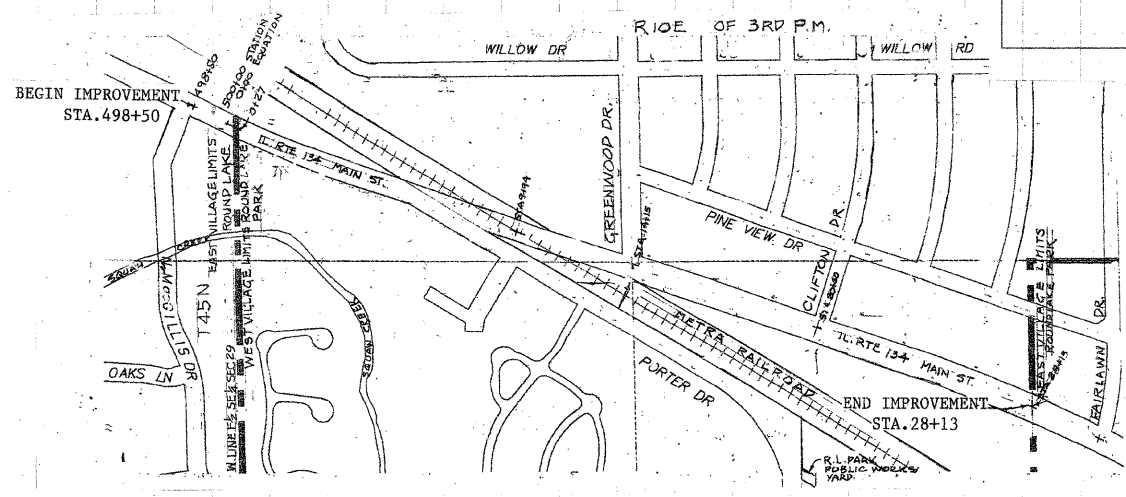
INDEX OF SHEETS

- 1. COVER SHEET
- 2. STANDARDS LIST & GENERAL NOTES
- 3. SUMMARY OF QUANTITIES
- 4-6. TYPICAL SECTIONS
- 7-10. EXISTING CONDITIONS
- 11A, 11, 12. PLAN & PROFILE
- 13-15. CROSS SECTIONS

TRAFFIC DATA= 8,900 ADT  
POSTED SPEED LIMIT = 30 MPH  
FUNCTIONAL CLASIFICATION = ARTERIAL

FULL SIZE PLANS HAVE BEEN PREPARED USING STANDARD ENGINEERING SCALES. REDUCED SIZED PLANS WILL NOT CONFORM TO STANDARD SCALES. IN MAKING MEASUREMENTS ON REDUCED PLANS, THE ABOVE SCALES MAY BE USED.

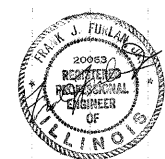
J.U.L.I.E.  
JOINT UTILITY LOCATION INFORMATION FOR EXCAVATION  
1-800-892-0123  
OR 811



LOCATION MAP  
SCALE 1" = 300'  
GROSS LENGTH = 2,936 FT. = 0.556 MILE  
NET LENGTH = 2,936 FT. = 0.556 MILE

STATE OF ILLINOIS DEPARTMENT OF TRANSPORTATION DIVISION OF HIGHWAYS	
APPROVED <u>May 17, 2011</u> ROUND LAKE MAYOR	APPROVED <u>May 17, 2011</u> ROUND LAKE PARK MAYOR
PASSED <u>May 31, 2011</u> DISTRICT # ENGINEER OF LOCAL ROADS & STREETS	
RELEASING FOR BID BASED ON LIMITED REVIEW <u>MAY 31 2011</u> DEPUTY DIRECTOR OF HIGHWAYS, REGION# ENGINEER	

Northern Illinois Survey, Inc.  
3283 West Grand Avenue  
Suite No. Four  
Waukegan, ILLINOIS 60085  
Phone: (847) 662-4568 Job No.: 5206  
BY FRANK J. FURLAY, JR., P.E.  
LICENSE EXPIRES 11-30-2011



PROGRAM AND OFFICE ENGINEER: CHARLES F. RIDDLER, P.E. 847-705-4406 SCHAUMBURG, IL.

### HIGHWAY STANDARDS

000001-06	STANDARD SYMBOLS, ABBREVIATIONS AND PATTERNS
424001-05	CURB RAMPS FOR SIDEWALK
542301-03	PRECAST REINFORCED CONCRETE FLARED END SECTION
542311-02	GRATING FOR CONCRETE FLARED END SECTION
542606-02	REINFORCED CONCRETE PIPE TEE
602011-02	CATCHBASIN TYPE C
602406-04	MANHOLE TYPE A (6' DIA.)
602601-02	PRECAST REINFORCED CONCRETE FLAT SLAB TOP
604001-03	FRAME & LID TYPE 1
701501-06	URBAN LANE CLOSURE 2L, 2W, UNDIVIDED
701901-01	TRAFFIC CONTROL DEVICES
780001-02	TYPICAL PAVEMENT MARKINGS

### GENERAL NOTES

EXCEPT AS NOTED ON THE PLANS, PAVEMENT GRADES SHOWN ARE AT THE TOP OF PAVEMENT SURFACES.

FOR STABILIZATION, ALL TYPE III BARRICADES SHALL REQUIRE A MINIMUM OF FOUR SAND BAGS PER BARRICADE.

FOR NEW CONSTRUCTION, PLACE CURB RAMPS FOR SIDEWALKS (STANDARD 424001) AT ALL LOCATIONS WHERE PROPOSED SIDEWALK ABUTS CURB AT STREET ENTRANCES.

THE WORK REQUIRED TO CONNECT ANY SEWER TO AN EXISTING DRAINAGE STRUCTURE OR PIPE WILL NOT BE PAID FOR SEPARATELY, BUT SHALL BE CONSIDERED AS INCLUDED IN THE CONTRACT UNIT PRICE BID FOR THE SEWER ITEMS.

SEEDING SHALL NOT BE PERMITTED AT ANY TIME WHEN THE GROUND IS FROZEN, WET, OR IN AN UNTILLABLE CONDITION. LOCATIONS TO BE SEEDED WILL BE DETERMINED BY THE ENGINEER.

ALL ELEVATIONS REFERRING TO U.S.G.S. MEAN SEA LEVEL DATUM.

ANY REFERENCE TO A STANDARD IN THESE PLANS SHALL BE INTERPRETED TO MEAN THE EDITION AS INDICATED BY THE SUBNUMBER SHOWN IN THE LIST OF STANDARDS OR THE COPY INCLUDED IN THESE PLANS.

MEMBERS OF JULIE KNOWN TO BE WITHIN THE LIMITS OF THE IMPROVEMENTS ARE:

1. NICOR GAS
2. AT&T
3. COMMONWEALTH EDISON
4. COMCAST
5. VILLAGE OF ROUND LAKE PARK
6. VILLAGE OF ROUND LAKE

THE CONTRACTOR SHALL CONTACT JULIE (800) 892-0123 AT LEAST 48 HOURS PRIOR TO EXCAVATION TO DETERMINE WHICH UTILITIES ARE WITH THE AREA.

DESIGNED	REVISED
DRAWN	REVISED
CHECKED	REVISED
DATE	REVISED

**STATE OF ILLINOIS  
DEPARTMENT OF TRANSPORTATION**

### HIGHWAY STANDARDS AND GENERAL NOTES

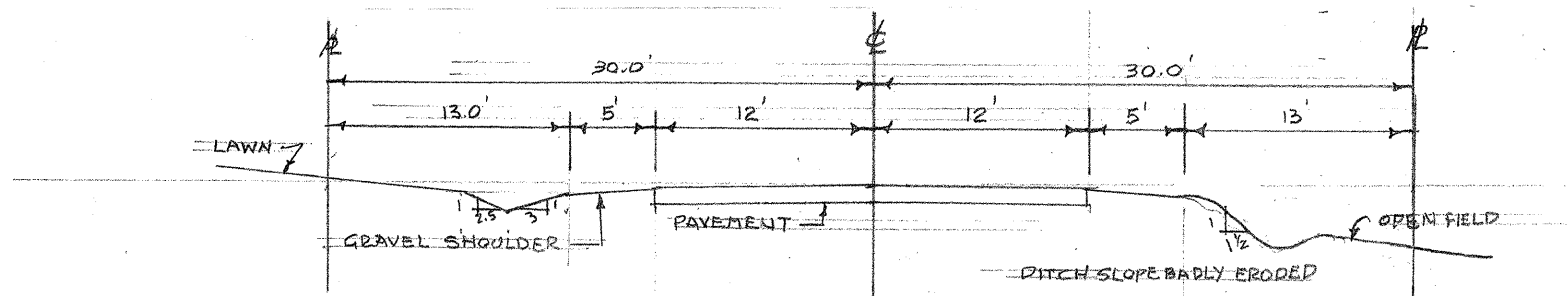
SCALE: \_\_\_\_\_ SHEET NO. 2 OF 16 SHEETS STA. TO STA. \_\_\_\_\_

F.A.D. RTE.	SECTION	COUNTY	TOTAL SHEETS	SHEET NO.
0188	10-00032-00-SW	LAKE	16	2
ILLINOIS			CONTRACT NO. 63599	
			FED. AID PROJECT	

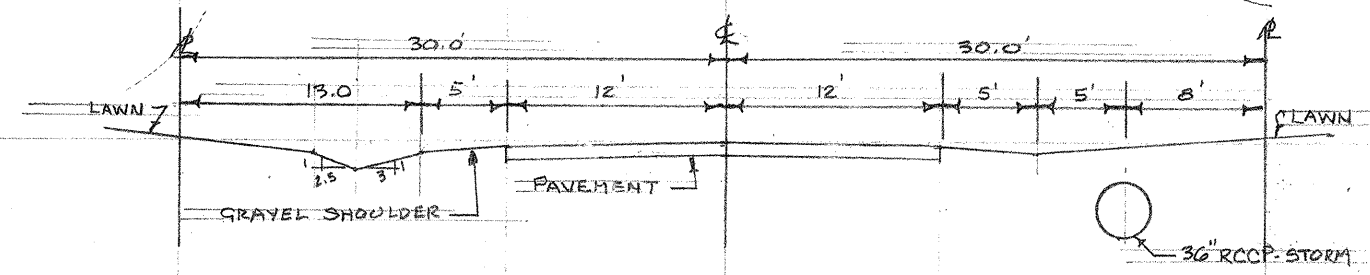
+1=16

CODE NO.	ITEM	UNIT	TOTAL QUANTITY	VILLAGE OF ROUND LAKE PARK		VILLAGE OF ROUND LAKE
				80% FED. 20% LOCAL 0021	100% LOCAL 0021	80% FED. 20% LOCAL 0021
20200100	EARTH EXCAVATION	CU YD	252	236		16
20400800	FURNISHED EXCAVATION	CU YD	803	790		13
21101615	TOPSOIL FURNISH AND PLACE 4"	SQ YD	2377	2227		150
25000110	SEEDING CLASS 1A	ACRE	0.50	0.46		.04
25000400	NITROGEN FERTILIZER NUTRIENT	POUND	45	41		4
25000500	PHOPHORUS FERTILIZER NUTRIENT	POUND	45	41		4
25000600	POTASSIUM FERTILIZER NUTRIENT	POUND	45	41		4
25100630	EROSION CONTROL BLANKET	SQ YD	2387	2227		160
28000400	PERIMETER EROSION BARRIER	FOOT	2275	2100		175
42400200	PORTLAND CEMENT CONCRETE SIDEWALK 5 INCH	SQ FT	11060	10310		750
42400400	PORTLAND CEMENT CONCRETE SIDEWALK 7 INCH	SQ FT	3200	3200		
42400800	DETECTABLE WARNINGS	SQ FT	22	12		10
44000200	DRIVEWAY PAVEMENT REMOVAL	SQ YD	457	457		
50104400	CONCRETE HEADWALL REMOVAL	EACH	1	1		
54213681	PRECAST REINFORCED CONCRETE FLARED END SECTION 36"	EACH	3	3		
54216220	REINFORCED CONCRETE PIPE TEE, 36" PIPE WITH 12" RISER	EACH	2	2		
54247170	GRATING FOR CONCRETE FLARED END SECTION 36"	EACH	3	3		
550A0050	STORM SEWERS, CLASS A, TYPE 1 12"	FOOT	30	30		
550A0140	STORM SEWER, CLASS A, TYPE 1 30"	FOOT	30	30		
550A0160	STORM SEWER CLASS A TYPE 1 36"	FOOT	436	436		
55101600	STORM SEWER R. MOVAL 36"	FOOT	70	70		
60103500	PIPE DRAINS, CORRUGATED STEEL, 12"	FOOT	13			13
60207605	CATCH BASINS TYPE C, TYPE 8 GRATE	EACH	4	4		
60223700	MANHOLES, TYP A, 6'-DIAMETER TYPE 1 FRAME OPEN LID	EACH	4	4		
60500050	REMOVING CATCH BASINS	EACH	1	1		
66400305	CHAIN LINK FENCE 6'	FOOT	355	355		
67100100	MOBILIZATION	L SUM	1	1		
70102620	TRAFFIC CONTROL AND PROTECTION, STANDARD 701501	L SUM	1	1		
* 78000600	THERMOPLASTIC PAVEMENT MARKING-LINE 12" (SPECIALTY ITEM)	FOOT	220	220		
Z0010555	DITCH CLEANING	FOOT	360		360	
Z0010600	CLEANING DRAINAGE SYSTEM	FOOT	540		540	
Z0048665	RAILROAD PROTECTIVE LIABILITY INSURANCE	L SUM	1	1		

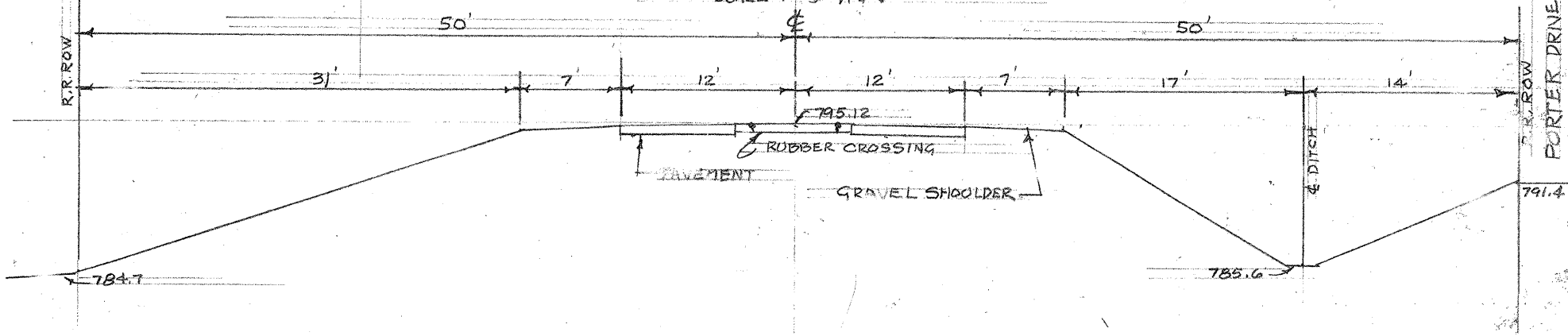
\* SPECIALTY ITEMS



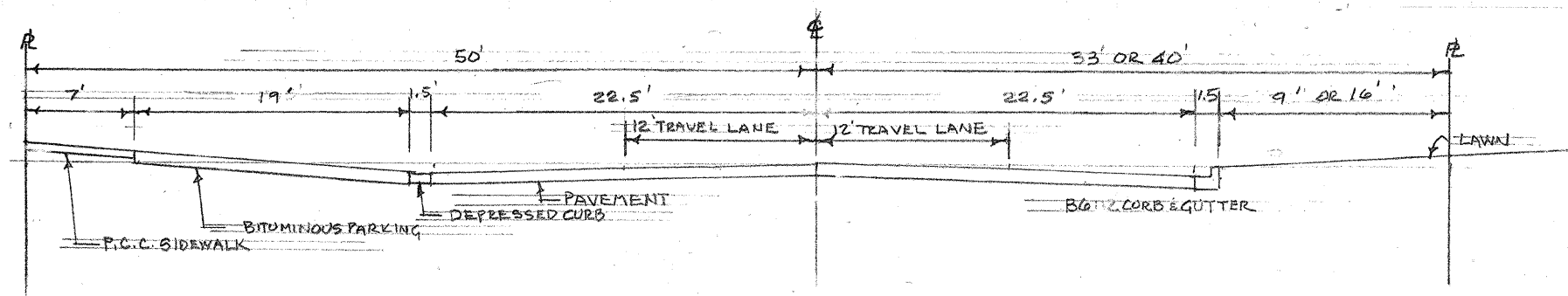
EXISTING TYPICAL SECTION STA 0+27 TO STA 5+50  
SCALE 1"=5' H&V



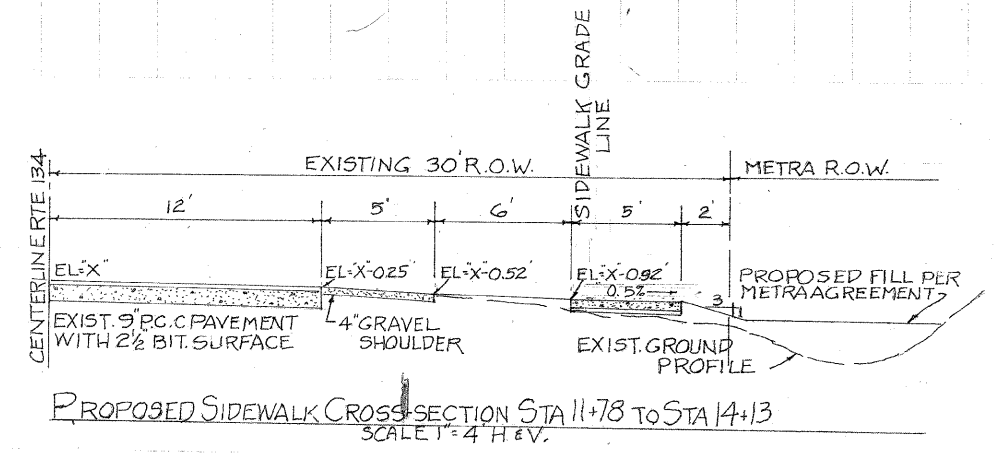
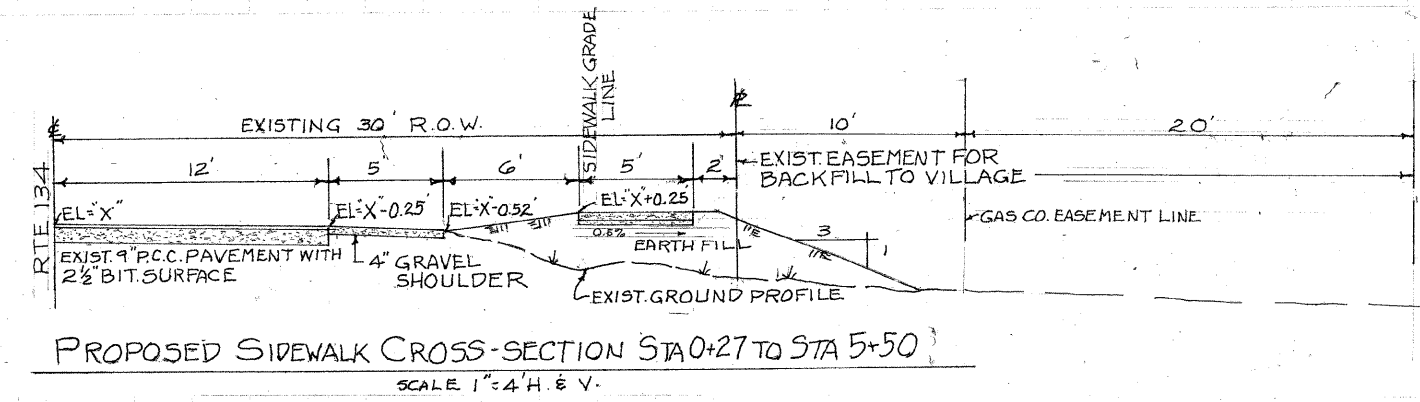
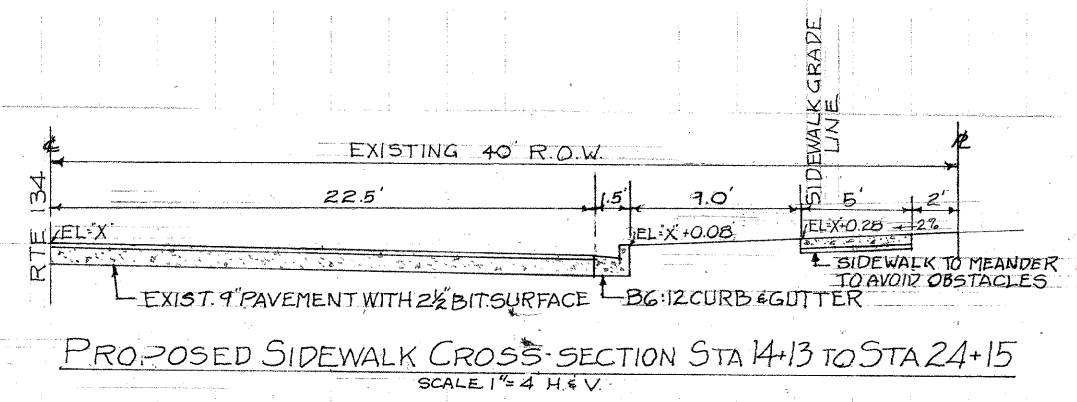
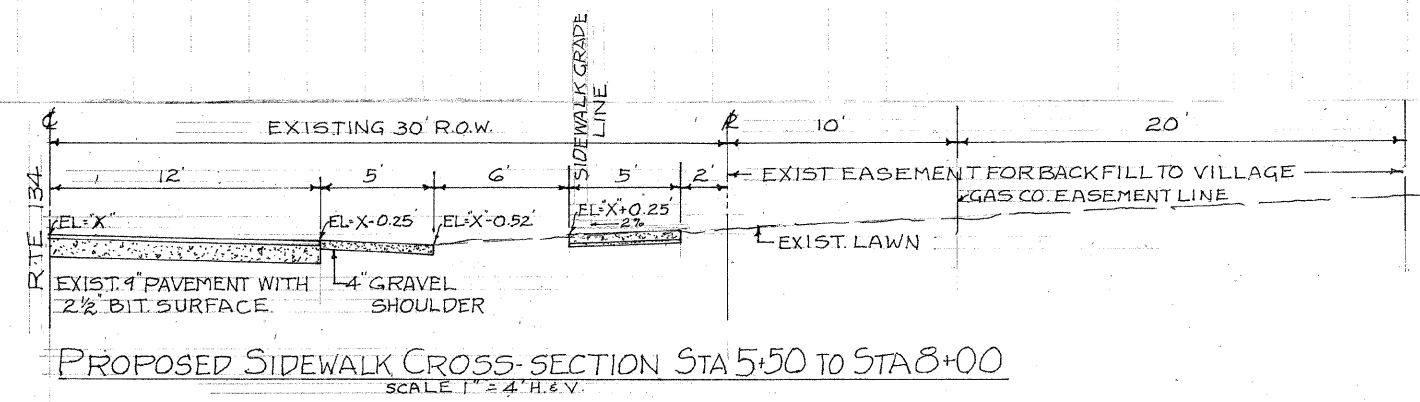
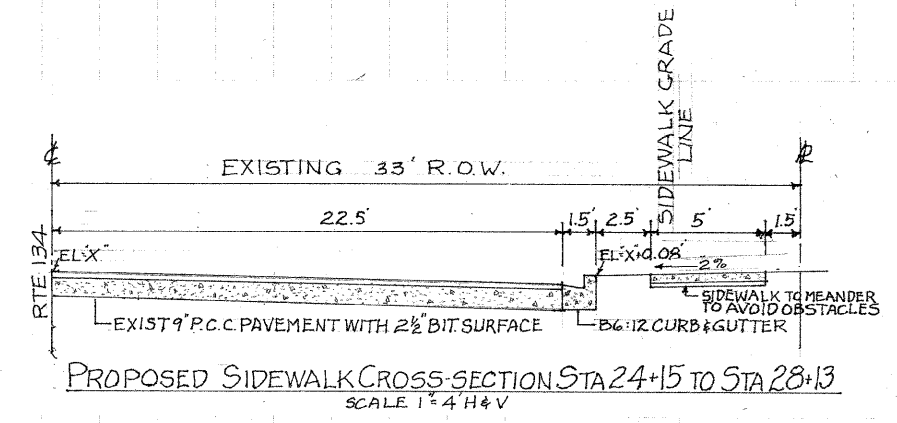
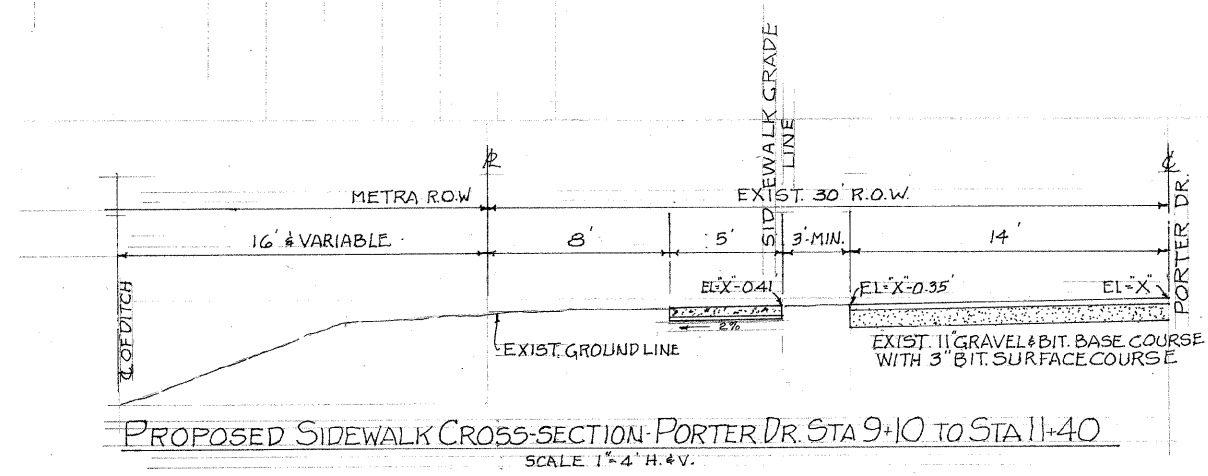
EXISTING TYPICAL SECTION STA 5+50 TO STA 8+00  
SCALE 1"=5' H&V



EXISTING SECTION AT STA 9+94 CENTERLINE RAILROAD INTERSECTION  
SCALE 1"=5' H&V



EXISTING TYPICAL SECTION STA 14+13 TO STA 28+13  
SCALE 1"=5' H&V



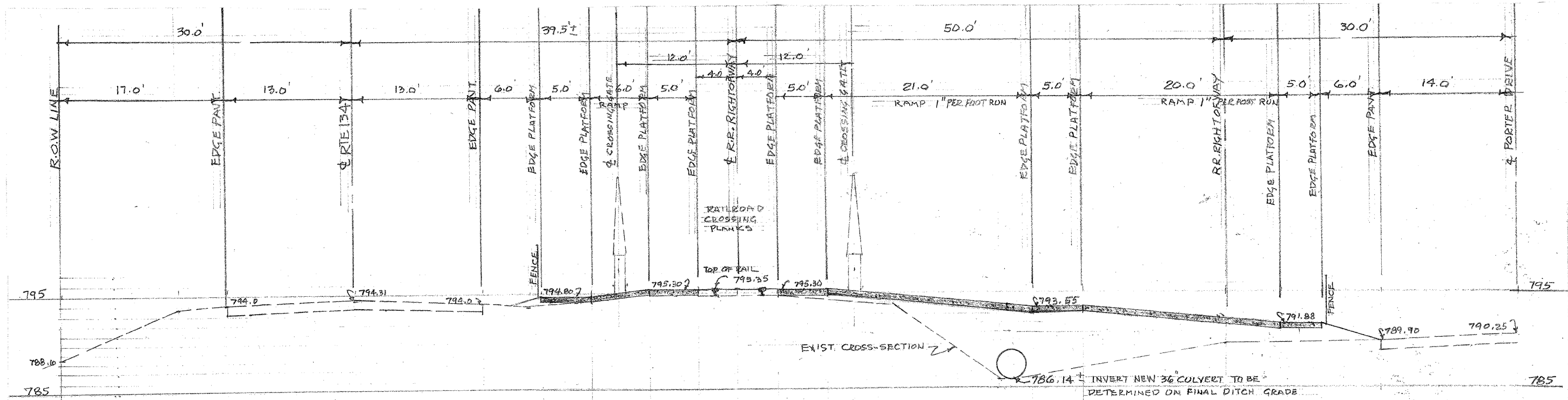
DESIGNED	REVISION
DRAWN	REVISION
CHECKED	REVISION
DATE	REVISION

STATE OF ILLINOIS  
DEPARTMENT OF TRANSPORTATION

PROPOSED TYPICAL SECTIONS

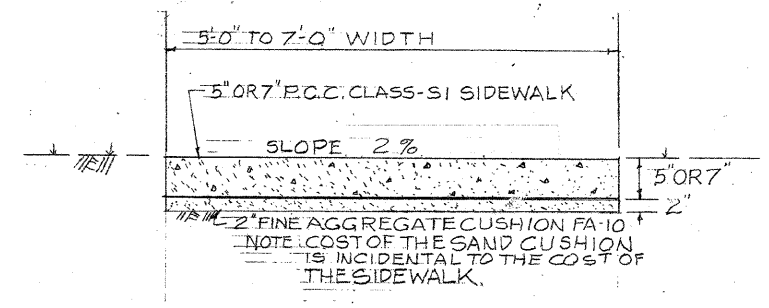
SCALE AS SHOWN	SHEET NO. 5 OF 16 SHEETS	STA. TO STA.
----------------	--------------------------	--------------

F.A.U. SECTION	COUNTY	TOTAL SHEETS	SHEET NO.
0186 10-00032-00-5W	LAKE	16	5
ILLINOIS CONTRACT NO. 63599			
FED. AID PROJECT			



SECTION AT STA 11+78 - SIDEWALK CROSSING AT METRA RAILROAD

SCALE 1" = 5' HOR. & VERT.



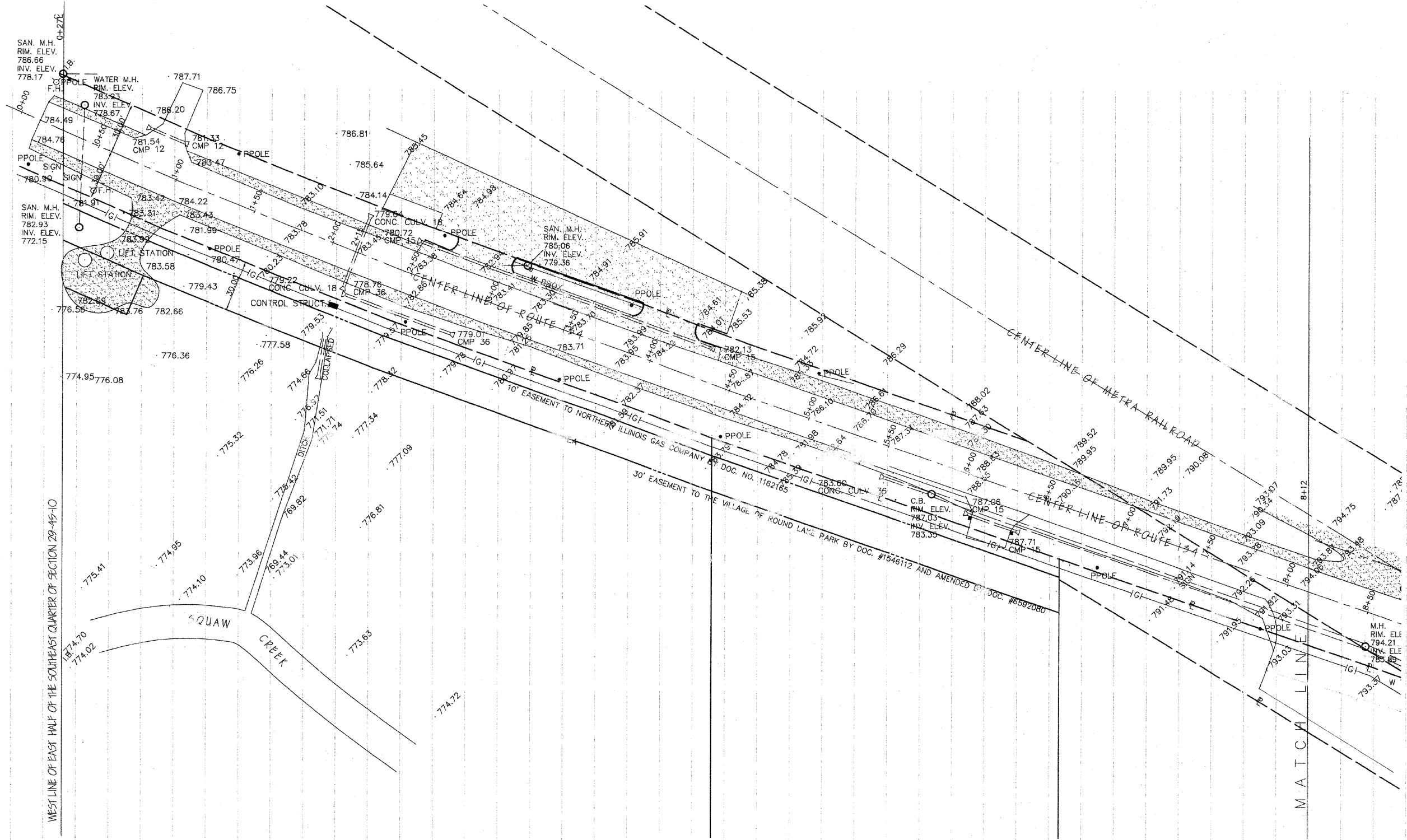
TYPICAL SECTION P.C.C. SIDEWALK  
SCALE 1" = 1'-0"

DESIGNED	REVISED
DRAWN	REVISED
CHECKED	REVISED
DATE	REVISED

STATE OF ILLINOIS  
DEPARTMENT OF TRANSPORTATION

PROPOSED TYPICAL SECTIONS





WEST LINE OF EAST HALF OF THE SOUTHEAST QUARTER OF SECTION 29-45-10

MATCH LINE

**STATE OF ILLINOIS  
DEPARTMENT OF TRANSPORTATION**

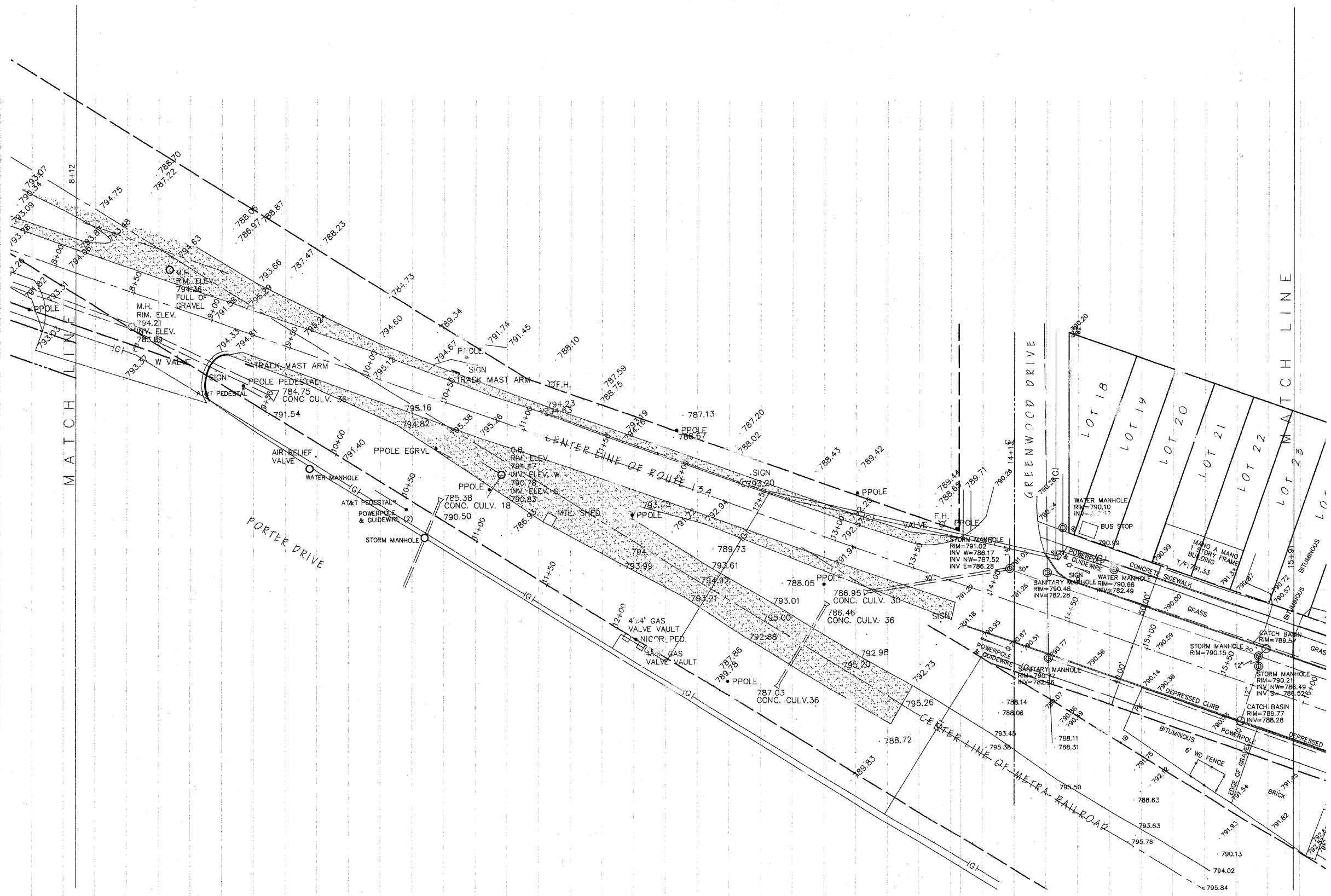
**EXISTING CONDITIONS**

DESIGNED	REVISED
DRAWN	REVISED
CHECKED	REVISED
DATE	REVISED

SCALE	1" = 20'
SHEET NO.	7 OF 16 SHEETS
STA.	0+27 TO STA. 8+12

F.A.U. SECTION	COUNTY	TOTAL SHEETS	SHEET NO.
0186 10-00032-00-SW	LAKE	16	7
ILLINOIS CONTRACT NO. 63599		FED. AID PROJECT	

4-16



DESIGNED	REVISED
DRAWN	REVISED
CHECKED	REVISED
DATE	REVISED

**STATE OF ILLINOIS  
DEPARTMENT OF TRANSPORTATION**

SCALE 1" = 50'

**EXISTING CONDITIONS**

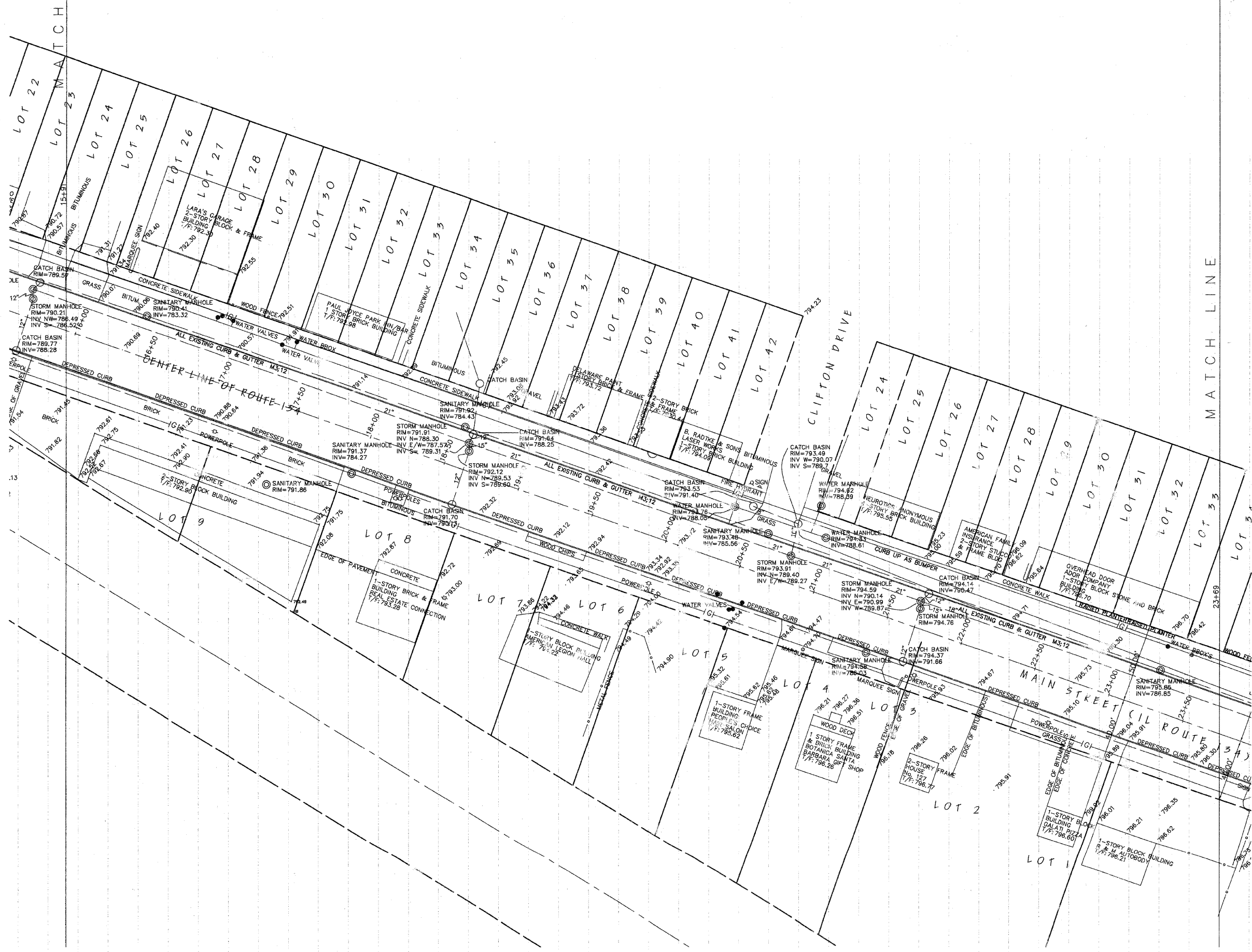
SHEET NO. 8 OF 16 SHEETS

STA. 8+12 TO STA. 15+91

F.A.U. SITE	SECTION	COUNTY	TOTAL SHEETS	SHEET NO.
0186	10-00032-00-SW	LAKE	15	8
		ILLINOIS	CONTRACT NO. 63599	
		FED. AID PROJECT		



+1=16



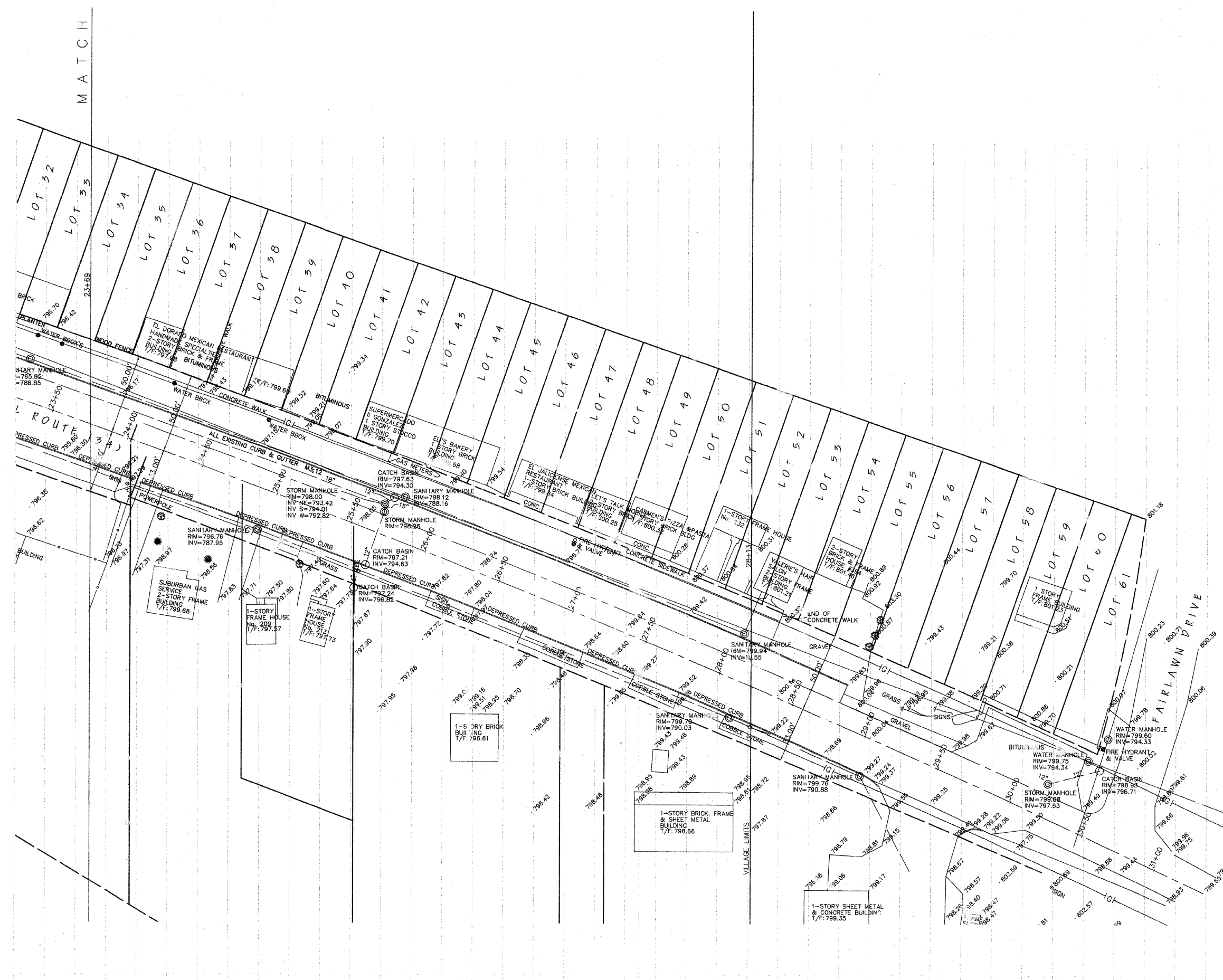
DESIGNED	REVISD
DRAWN	REVISD
CHECKED	REVISD
DATE	REVISD

STATE OF ILLINOIS  
DEPARTMENT OF TRANSPORTATION

EXISTING CONDITIONS

SCALE 1"=30'  
SHEET NO. 9 OF 16 SHEETS  
STA. 15+91 TO STA. 23+69

F.A.U. NO.	SECTION	COUNTY	TOTAL SHEETS	SHEET NO.
0186	10-00032-00-SW	LAKE	15	9
ILLINOIS CONTRACT NO. 63569				
FED. AID PROJECT				



MATCH

ROUTE 34

FAIRLAWN DRIVE

STATE OF ILLINOIS  
DEPARTMENT OF TRANSPORTATION

EXISTING CONDITIONS

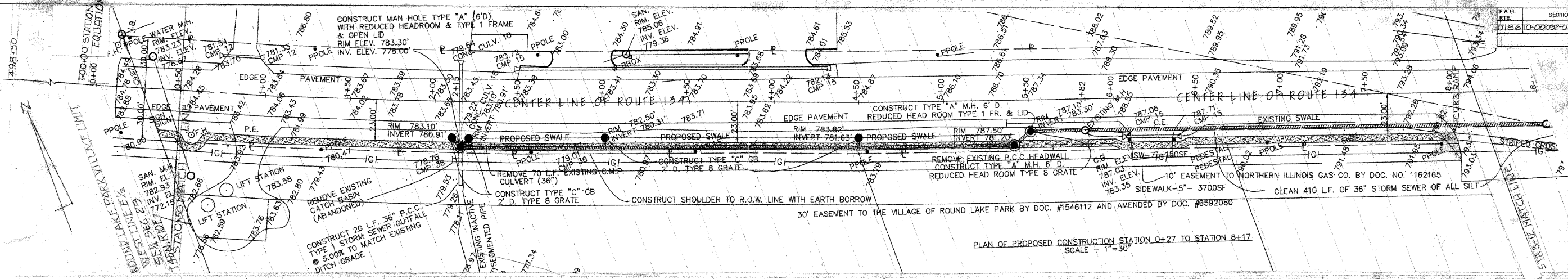
DESIGNED	REVISED
DRAWN	REVISED
CHECKED	REVISED
DATE	REVISED

SCALE 3" = 30'

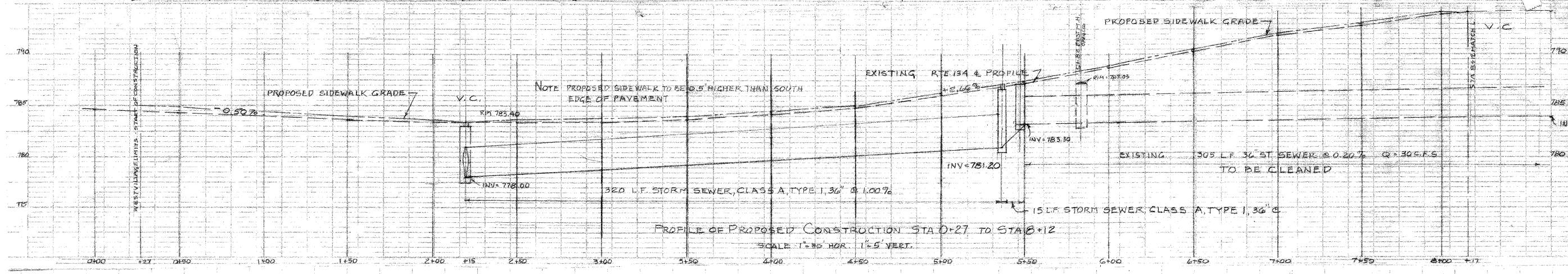
SHEET NO. 10 OF 16 SHEETS

STA. 23+89 TO STA. 28+13

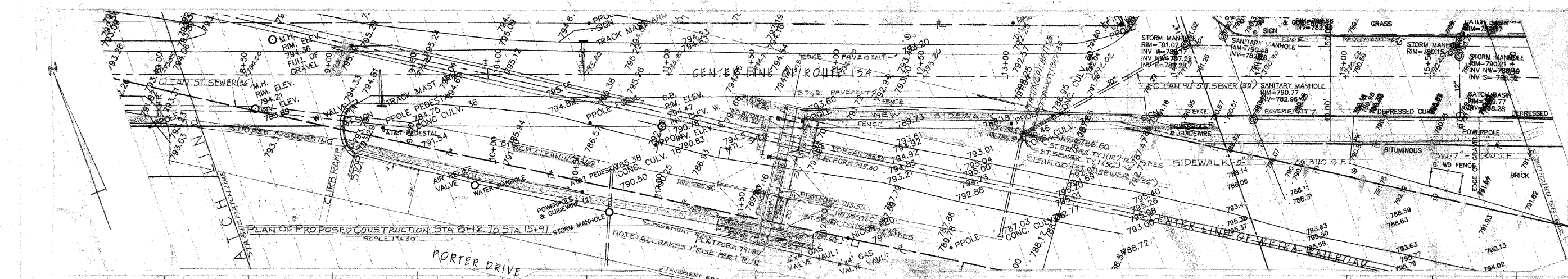
F.A.U. NO.	SECTION	COUNTY	TOTAL SHEETS	SHEET NO.
0188	10-00032-00-SW	LAKE	15	10
ILLINOIS		CONTRACT NO. 63599		
FED. AID PROJECT				



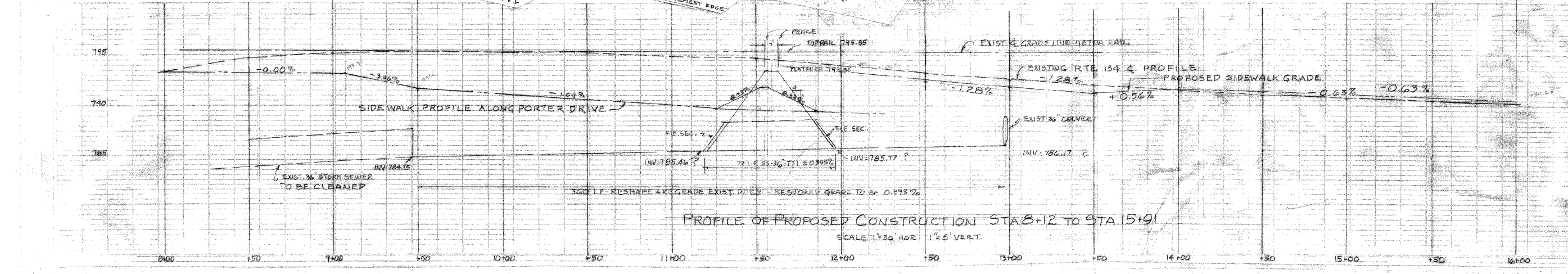
PLAN OF PROPOSED CONSTRUCTION STA 0+27 TO STATION 8+17  
SCALE - 1"=30'



PROFILE OF PROPOSED CONSTRUCTION STA 0+27 TO STA 8+17  
SCALE 1"=30' HOR. 1"=5' VERT.



PLAN OF PROPOSED CONSTRUCTION STA 8+12 TO STA 15+91  
SCALE 1"=30'



PROFILE OF PROPOSED CONSTRUCTION STA 8+12 TO STA 15+91  
SCALE 1"=30' HOR. 1"=5' VERT.

DESIGNED	REVISED
DRAWN	REVISED
CHECKED	REVISED
DATE	REVISED

STATE OF ILLINOIS  
DEPARTMENT OF TRANSPORTATION

PLAN & PROFILE - SIDEWALK DRAINAGE

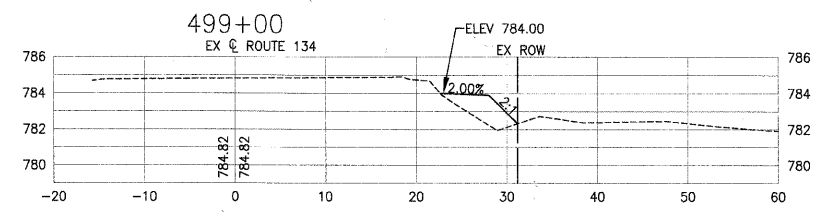
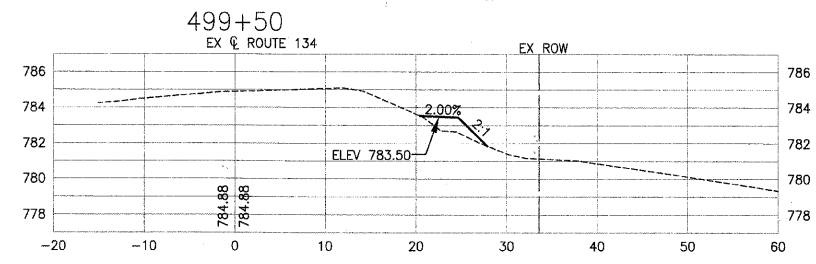
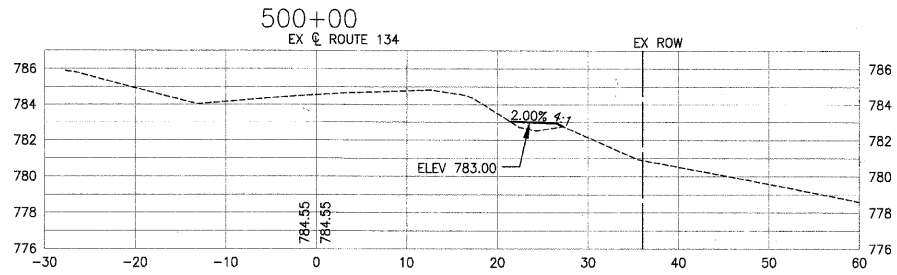
SCALE AS SHOWN SHEET NO. 11 OF 15 SHEETS STA. 0+27 TO STA. 15+91

SECTION	COUNTY	TOTAL SHEETS	SHEET NO.
0186 10-00032-00-SW	LAKE	16	11
ILLINOIS CONTRACT NO. 63599			
FED AID PROJECT			

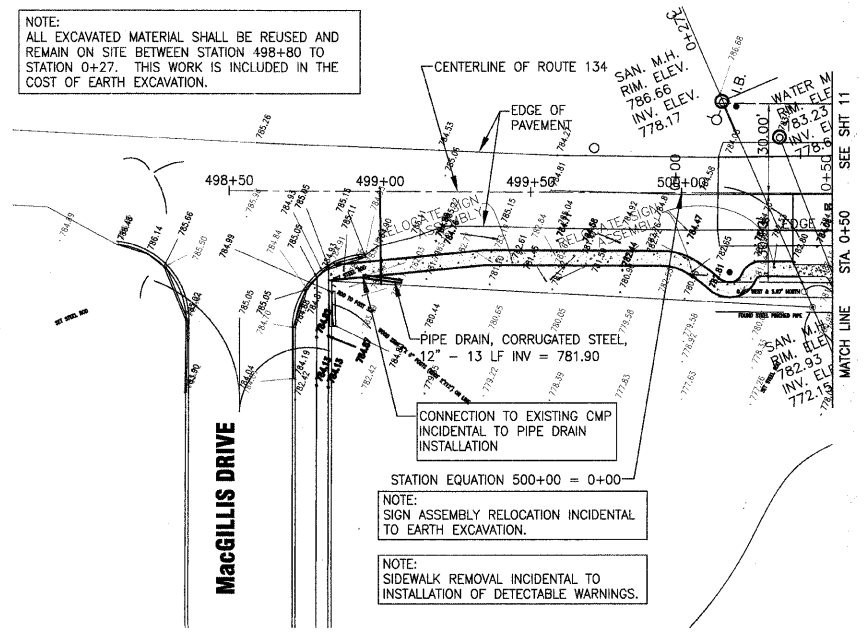


+1=16

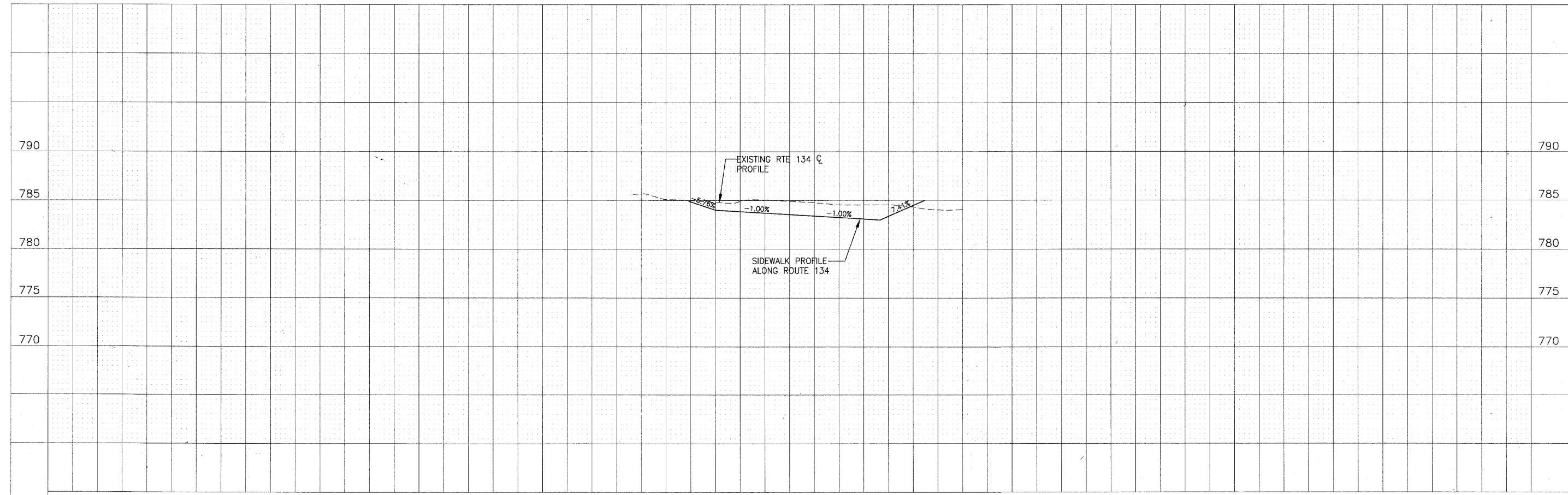
SCALE: 1"=10' HORZ  
1"=5' VERT.



NOTE:  
ALL EXCAVATED MATERIAL SHALL BE REUSED AND REMAIN ON SITE BETWEEN STATION 498+80 TO STATION 0+27. THIS WORK IS INCLUDED IN THE COST OF EARTH EXCAVATION.



**ROUTE 134**



DESIGNED	REVISED
DRAWN	REVISED
CHECKED	REVISED
DATE	REVISED

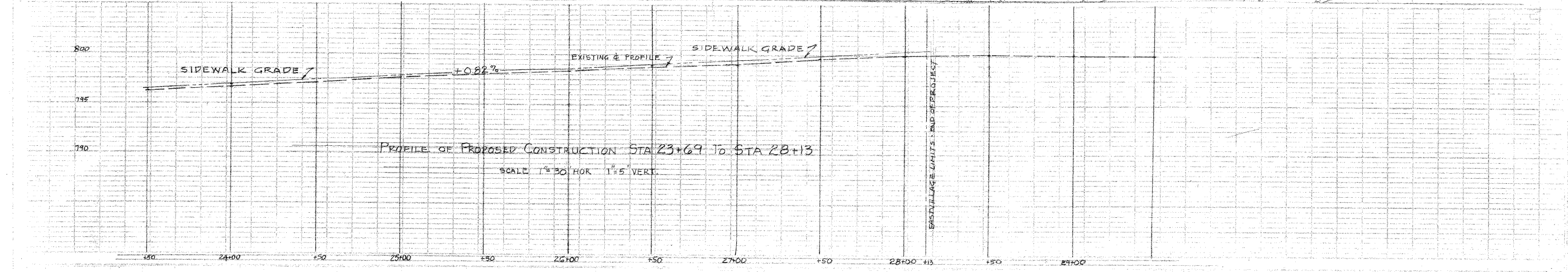
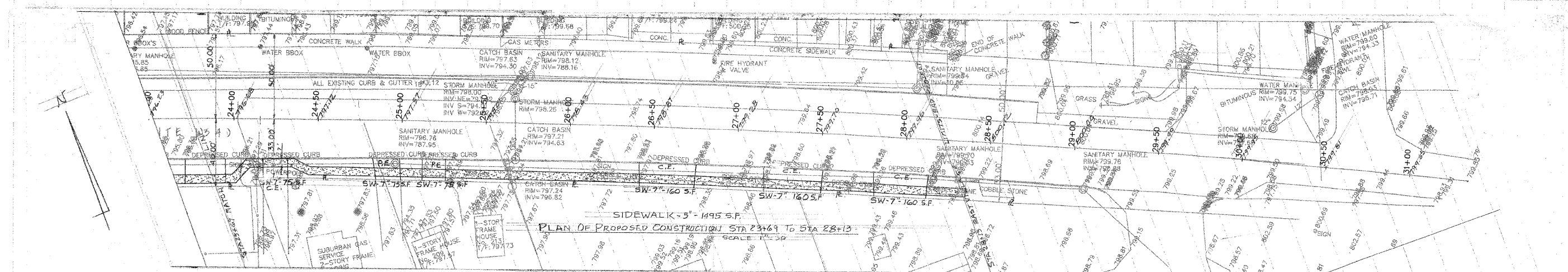
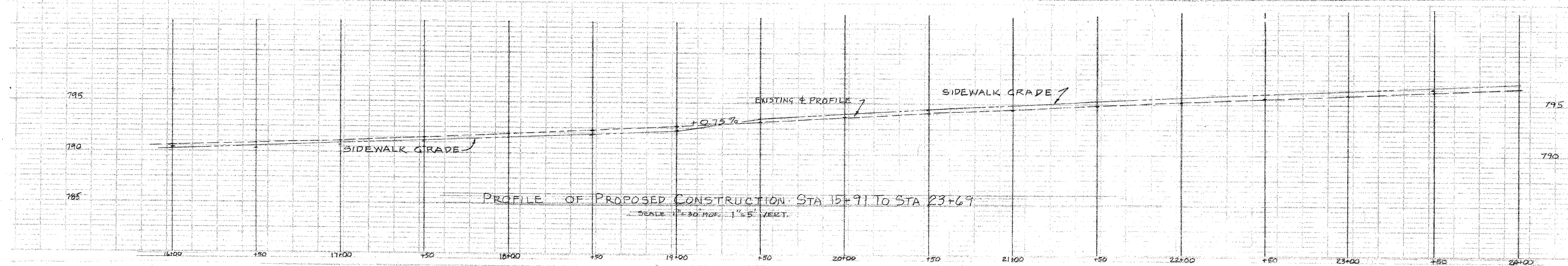
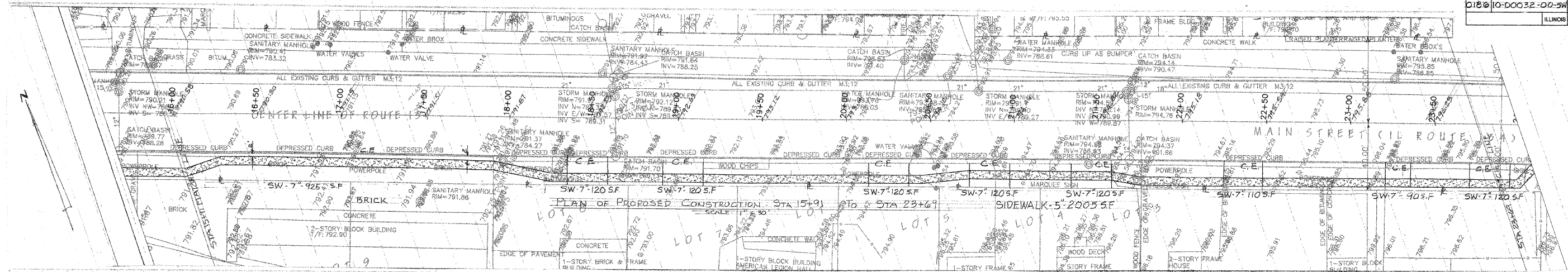
STATE OF ILLINOIS  
DEPARTMENT OF TRANSPORTATION

**PLAN AND PROFILE**

SCALE 1"=30' SHEET NO. OF SHEETS STA. 498+50 TO STA. 500+00

F.A. U. RTE.	SECTION	COUNTY	TOTAL SHEETS	SHEET NO.
0186	10-00032-00-SW	LAKE	16	11A
ILLINOIS			FED. AID PROJECT	

11-16

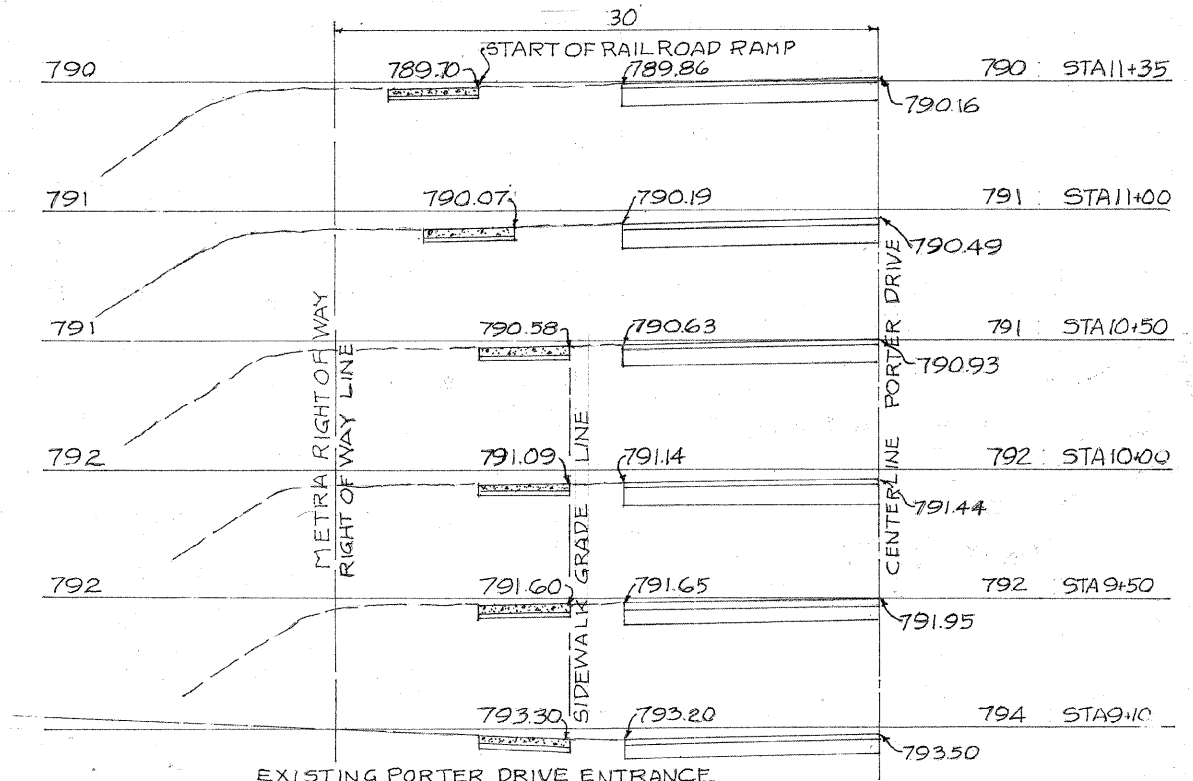
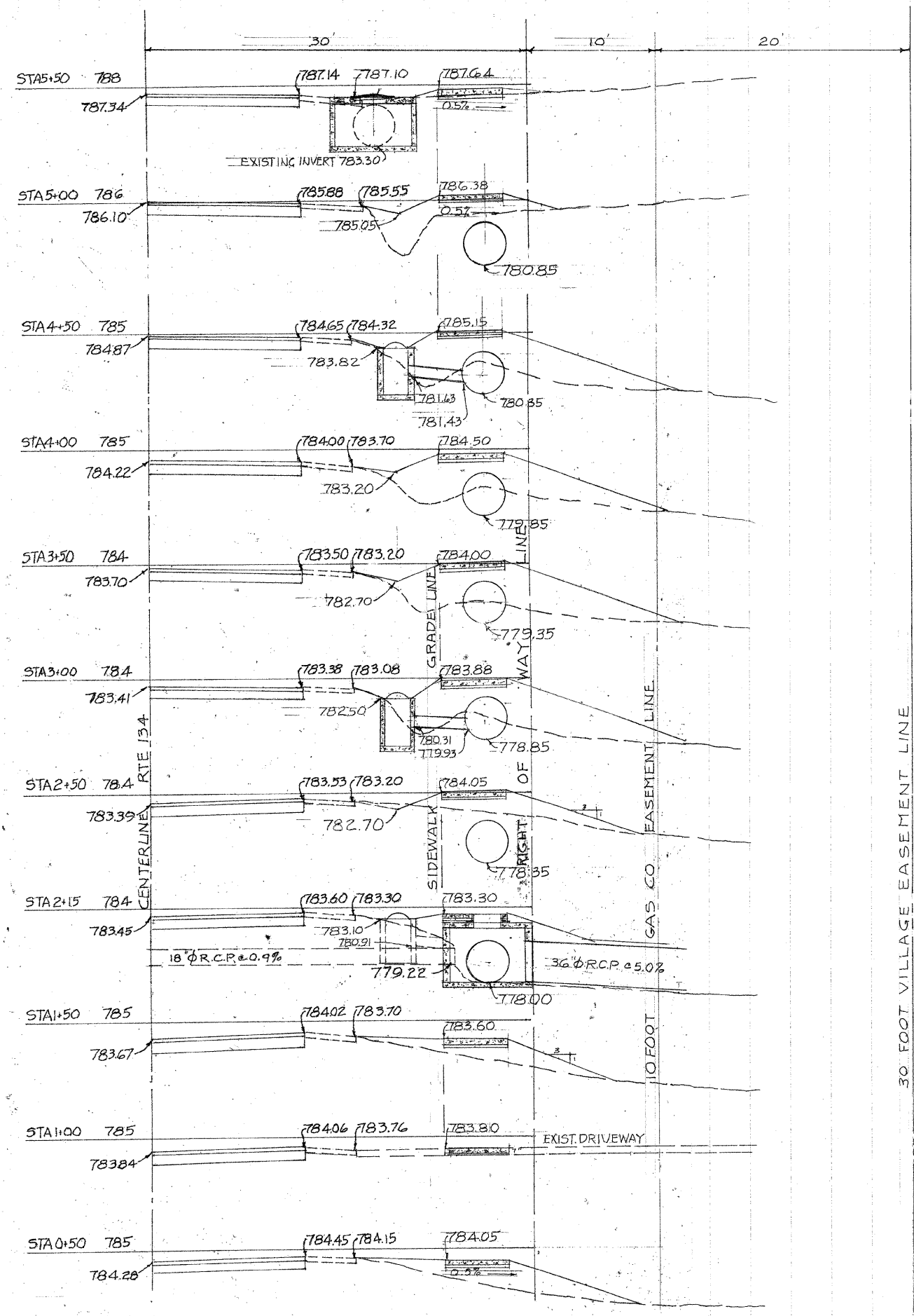


DESIGNED	REVISED
DRAWN	REVISED
CHECKED	REVISED
DATE	REVISED

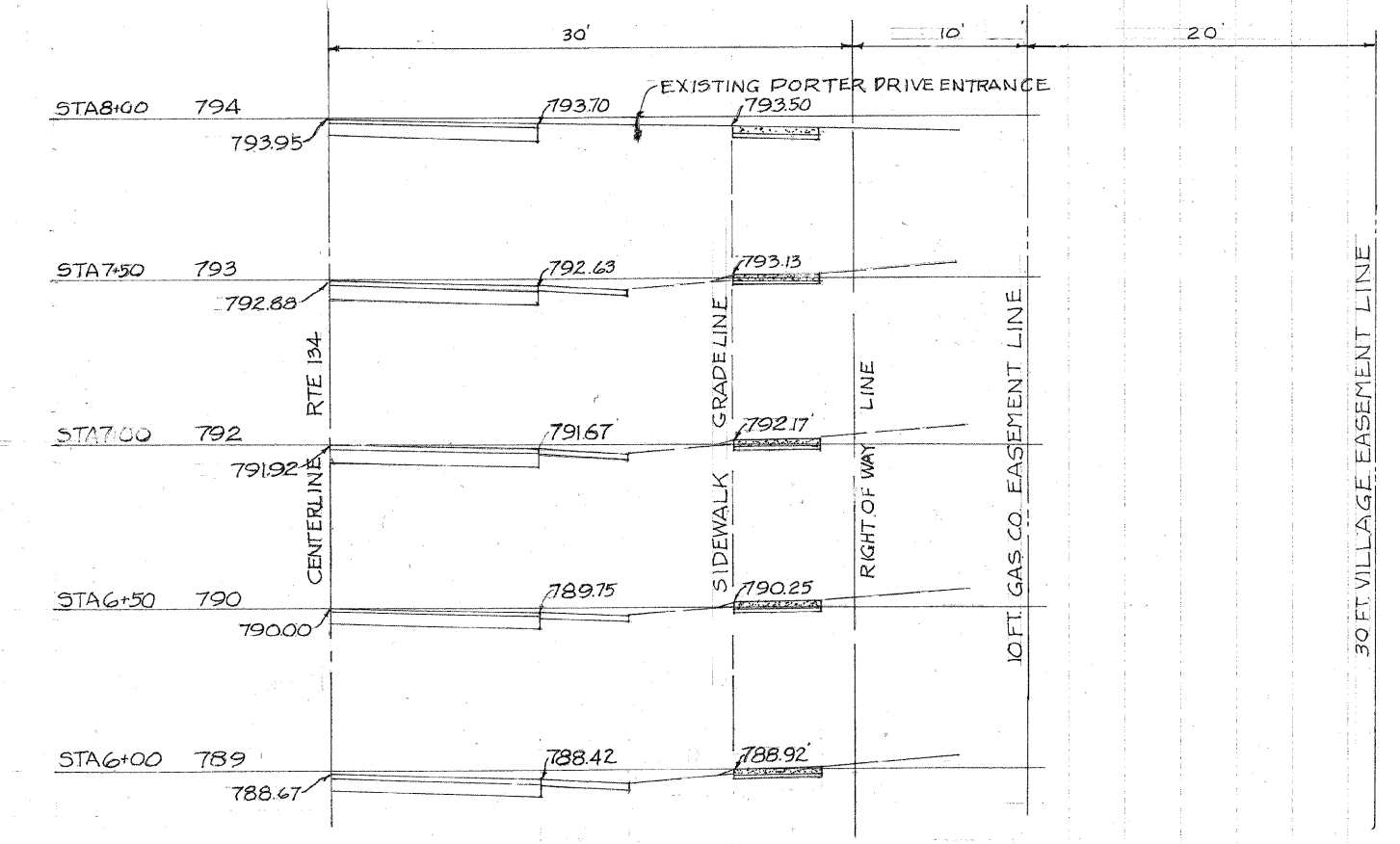
STATE OF ILLINOIS  
DEPARTMENT OF TRANSPORTATION

PLAN & PROFILE - SIDEWALK DRAINAGE  
SCALE AS SHOWN

FILE NO.	SECTION	COUNTY	TOTAL SHEETS	SHEET NO.
0186	10-00032-00-SW	LAKE	16	12
ILLINOIS			CONTRACT NO. 63599	



PROPOSED SIDEWALK CROSS-SECTIONS PORTER DRIVE STA 9+10 TO STA 11+35  
SCALE: 1" = 5' H & V



DESIGNED	REVISD
DRAWN	REVISD
CHECKED	REVISD
DATE	REVISD

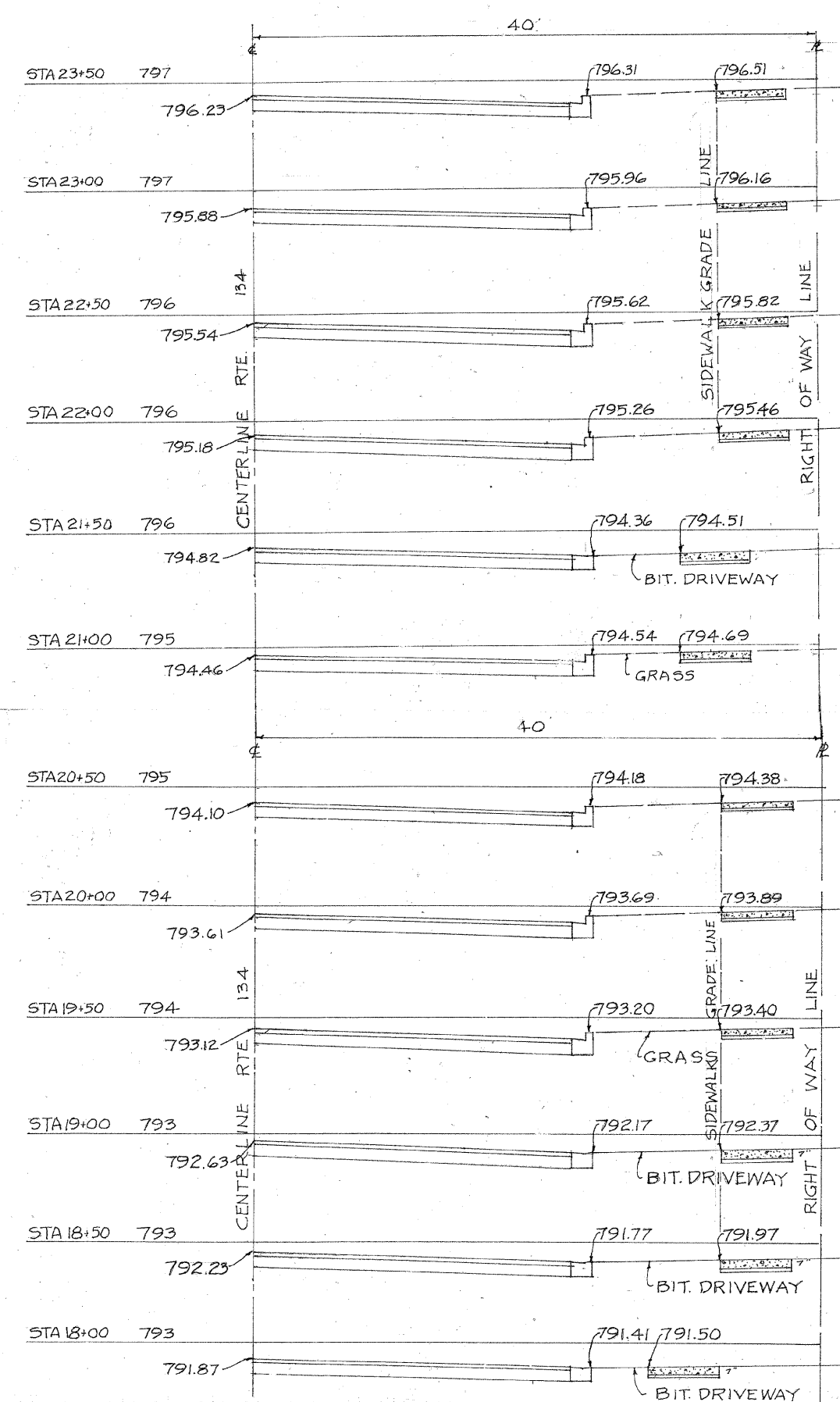
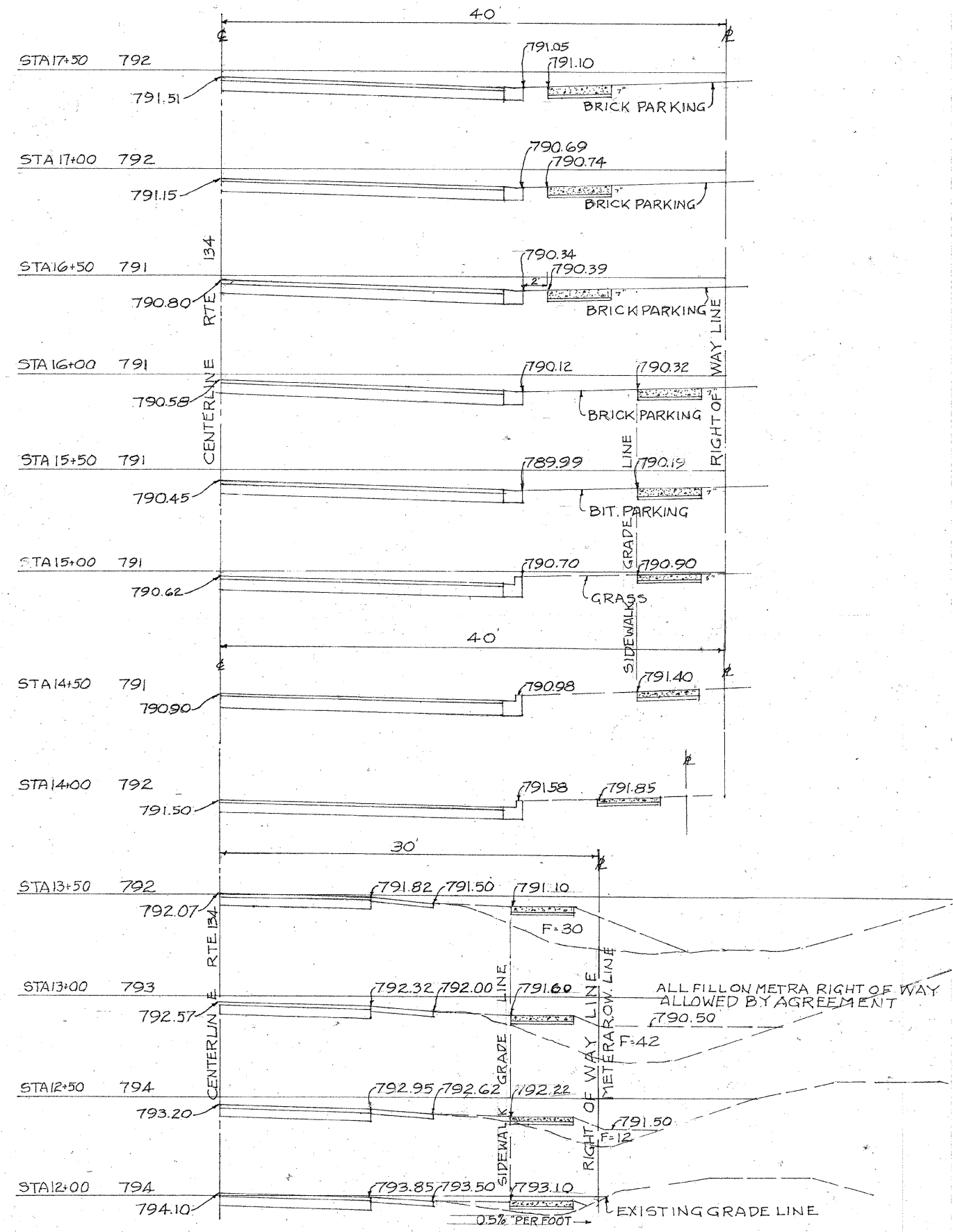
STATE OF ILLINOIS  
DEPARTMENT OF TRANSPORTATION

CROSS-SECTIONS  
SCALE: 1" = 5' H & V  
SHEET NO. 13 OF 16 SHEETS  
STA 0+50 TO STA 11+35

F.A.U. SECTION	COUNTY	TOTAL SHEETS	SHEET NO.
0188 10-00032-00-SW	LAKE	16	13
ILLINOIS		CONTRACT NO. 63599	
		FED. AID PROJECT	



+1=16



DESIGNED	REVISD
DRAWN	REVISD
CHECKED	REVISD
DATE	REVISD

**STATE OF ILLINOIS  
DEPARTMENT OF TRANSPORTATION**

**CROSS-SECTIONS**

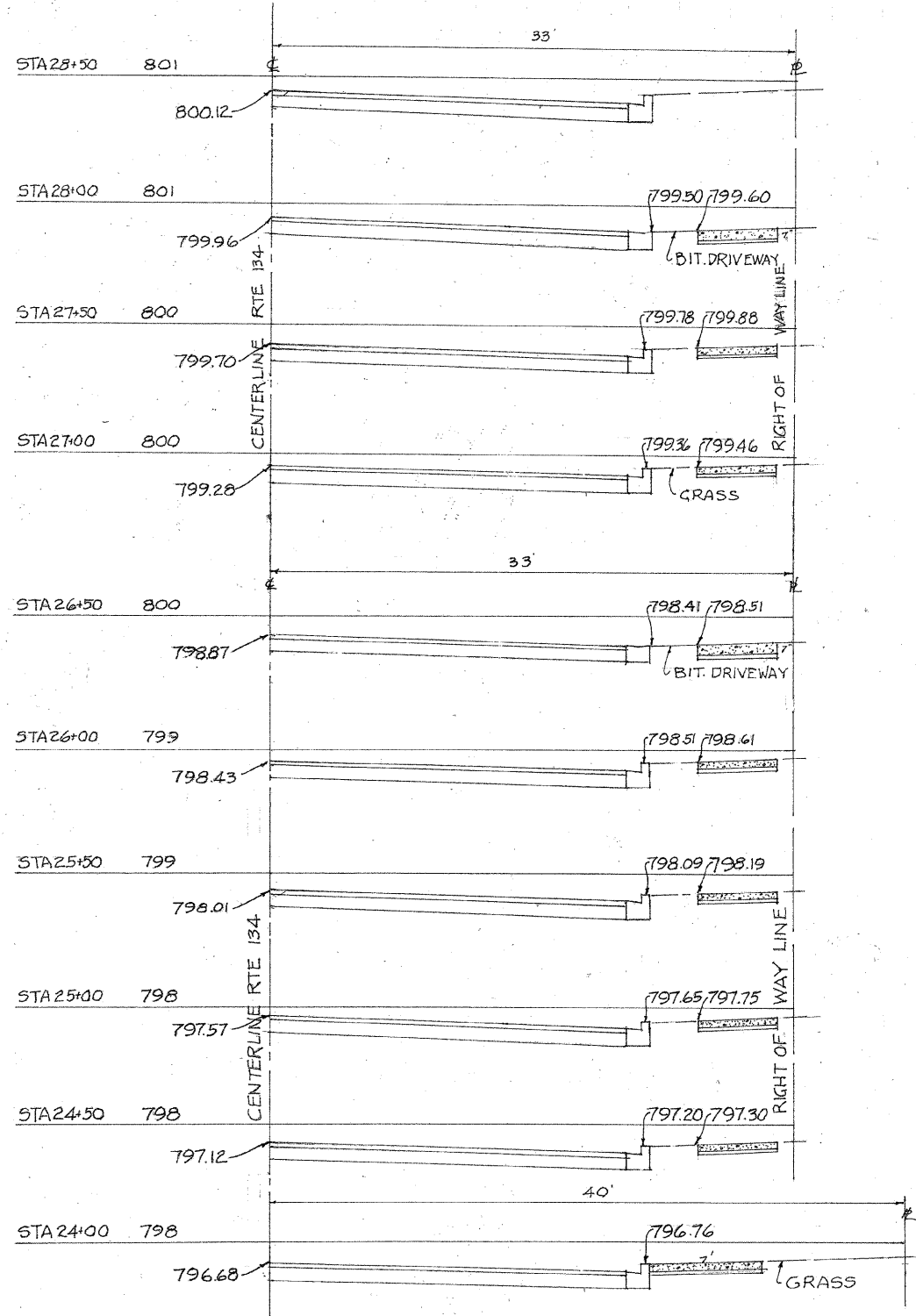
SCALE 1"=5' H & V

SHEET NO. 14 OF 16 SHEETS

STA 12+00 TO STA 23+50

F.A.U. SECTION	COUNTY	TOTAL SHEETS	SHEET NO.
0188 10-00032-00-SW	LAKE	15	14
ILLINOIS		CONTRACT NO. 63599	
FED. AID PROJECT			

+1-16



DESIGNED	REVISD
DRAWN	REVISD
CHECKED	REVISD
DATE	REVISD

**STATE OF ILLINOIS  
DEPARTMENT OF TRANSPORTATION**

**CROSS-SECTIONS**

SCALE 1" = 5' H & V

SHEET NO 15 OF 16 SHEETS

STA 24+00 TO STA 28+50

F.A.U. NO.	SECTION	COUNTY	TOTAL SHEETS	SHEET NO.
0188	10-00032-00-SW	LAKE	16	15
ILLINOIS			CONTRACT NO. 63599	
FED AID PROJECT				