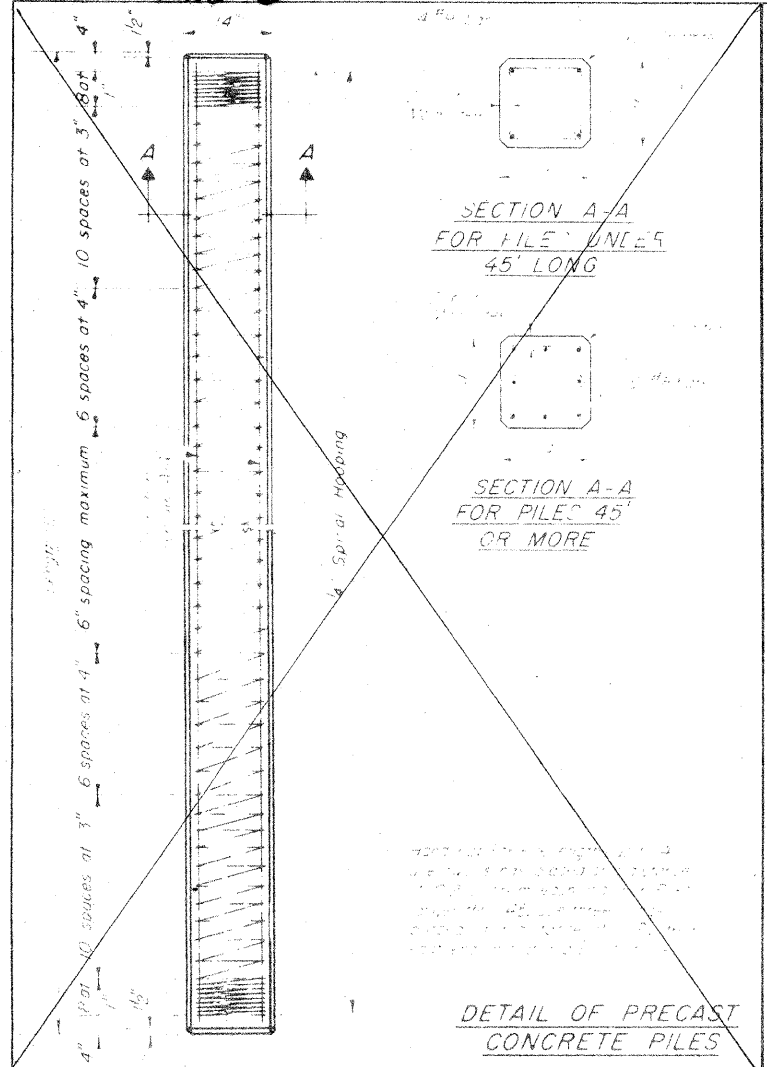


CONS-16

STATE OF ILLINOIS
DEPARTMENT OF TRANSPORTATION

FAU 2651 78-0046-00-65 DuPage 36 16A
NG-5003(100)



SECTION A-A
FOR PILES UNLESS
45' LONG

SECTION A-A
FOR PILES 45'
OR MORE

DETAIL OF PRECAST
CONCRETE PILES

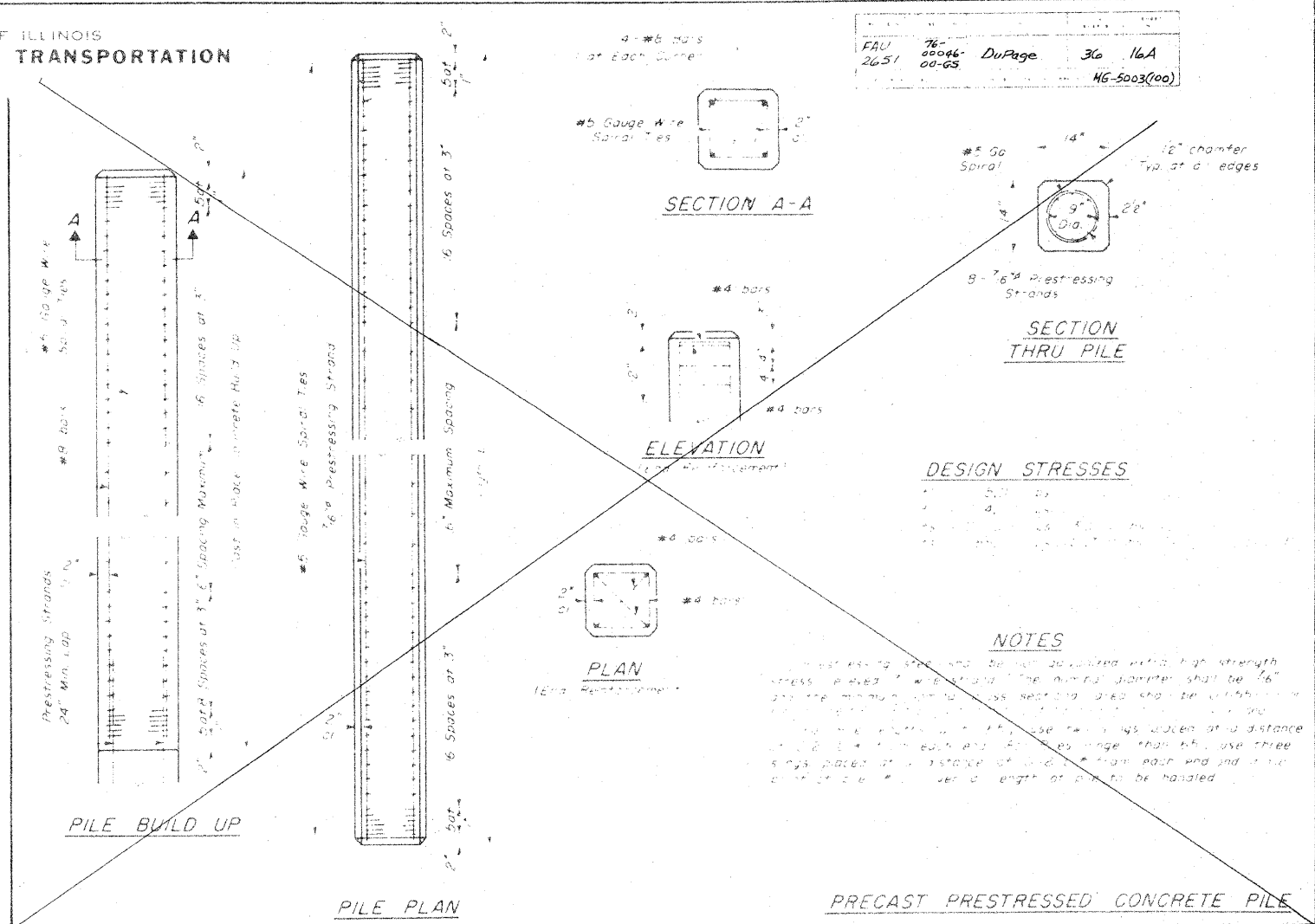
FIELD CRIMP DETAIL

OPTIONAL FLAT END

ALLOWABLE TAPER SECTION

NOTE:
The thickness of the steel shall be 0.1793 inches for 42 T. piles and 0.25" for 52 T. piles.

DETAIL OF TAPERED METAL SHELLS
FOR CAST IN PLACE CONCRETE PILES



SECTION A-A

ELEVATION

PLAN

SECTION
THRU PILE

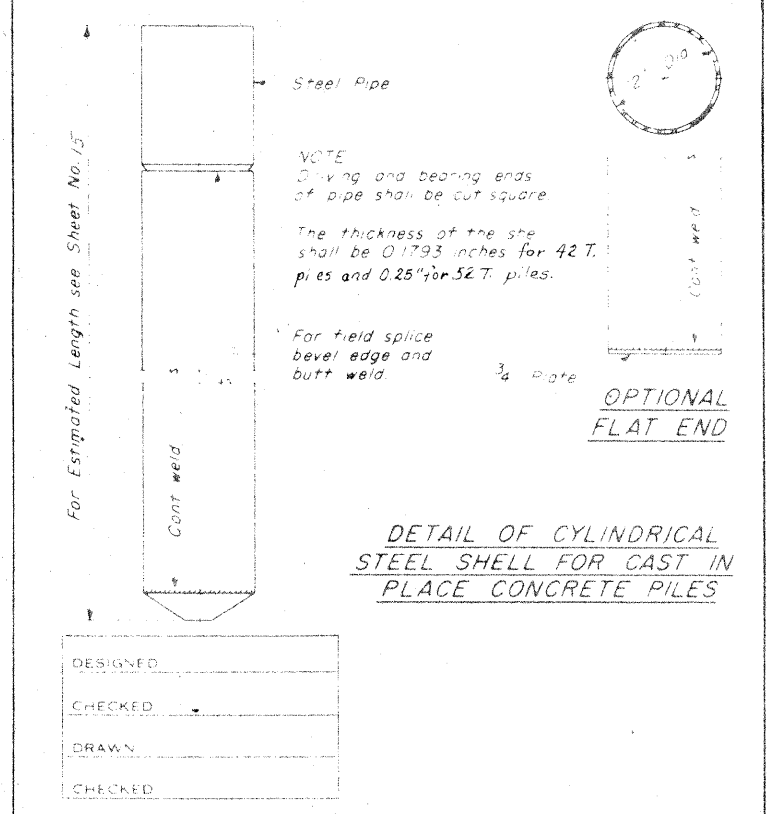
DESIGN STRESSES

NOTES

PILE BUILD UP

PILE PLAN

PRECAST PRESTRESSED CONCRETE PILE



Steel Pipe

NOTE:
Driving and bearing ends of pipe shall be cut square.

The thickness of the shell shall be 0.1793 inches for 42 T. piles and 0.25" for 52 T. piles.

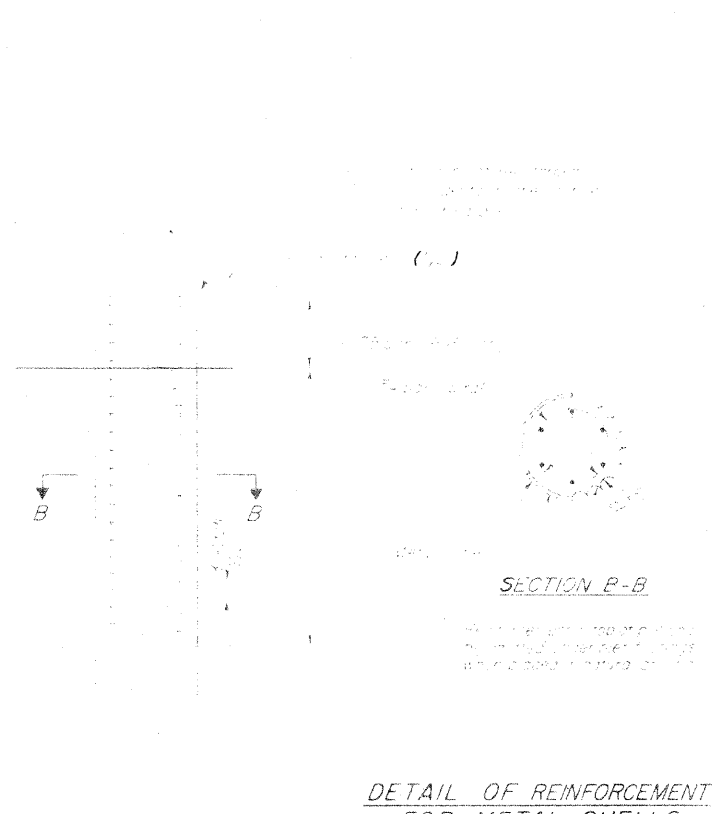
For field splice bevel edge and butt weld.

OPTIONAL
FLAT END

DETAIL OF CYLINDRICAL
STEEL SHELL FOR CAST IN
PLACE CONCRETE PILES

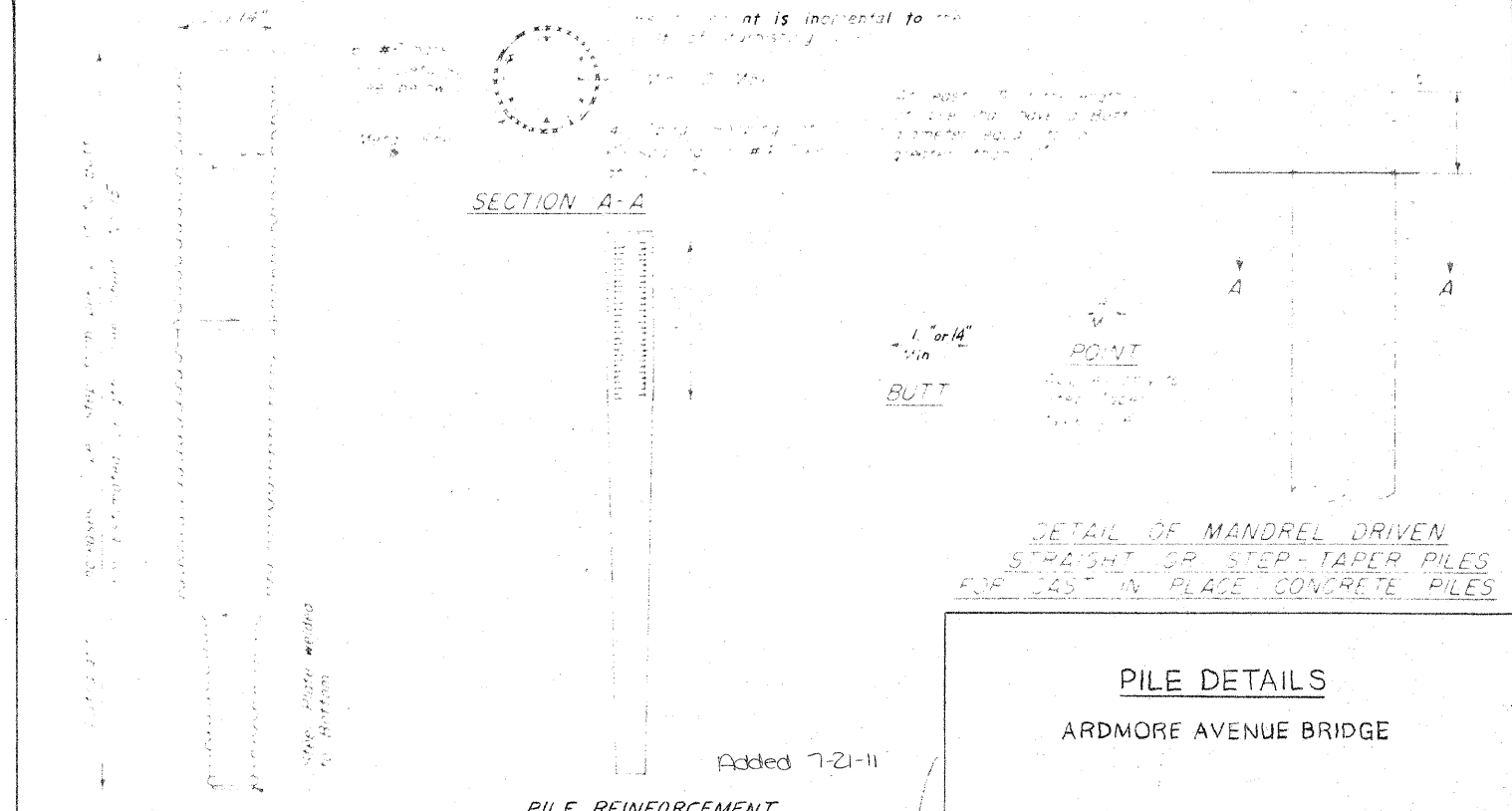
DESIGNED	
CHECKED	
DRAWN	
CHECKED	

X-3 6-26-70



SECTION B-B

DETAIL OF REINFORCEMENT
FOR METAL SHELLS



SECTION A-A

PILE REINFORCEMENT

DETAIL OF MANDREL DRIVEN
STRAIGHT OR STEP-TAPER PILES
FOR CAST IN PLACE CONCRETE PILES

PILE DETAILS
ARDMORE AVENUE BRIDGE

Added 7-21-11

CONS-16