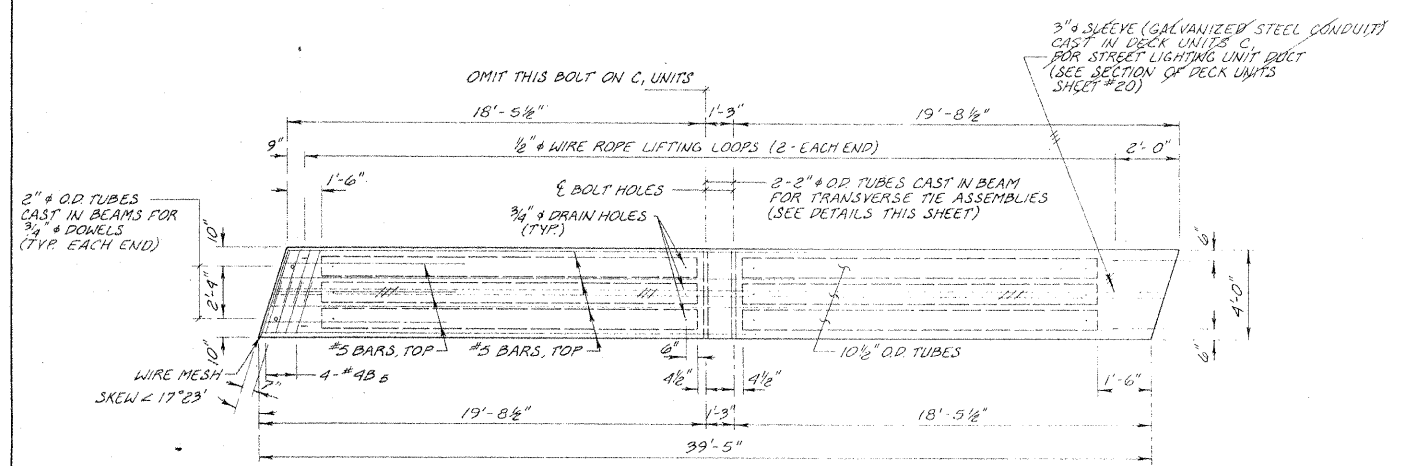
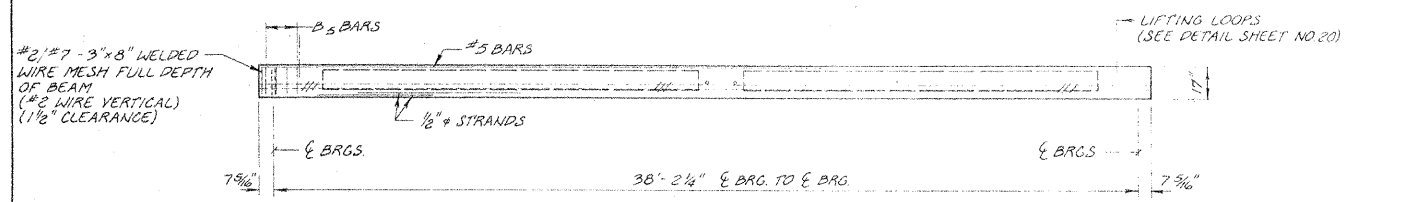


00115-21

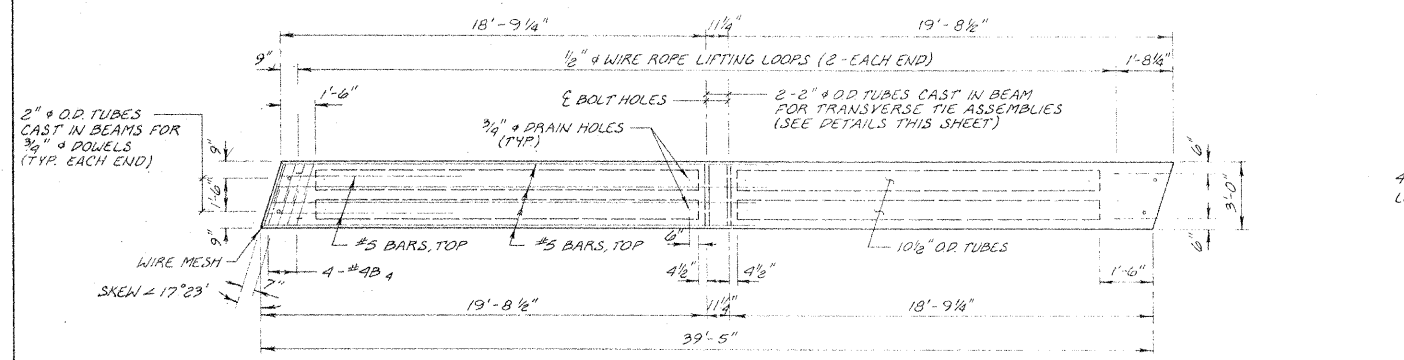
DATE	SECTION	COUNTY	TOTAL SHEETS	SHEET NO.
FAY 76-00046-2691	00-53	DUPAGE	36	21
STA	TO STA.			
FED. ROAD DIST. NO.	ILLINOIS	FED. AID PROJECT M6-5003(00)		



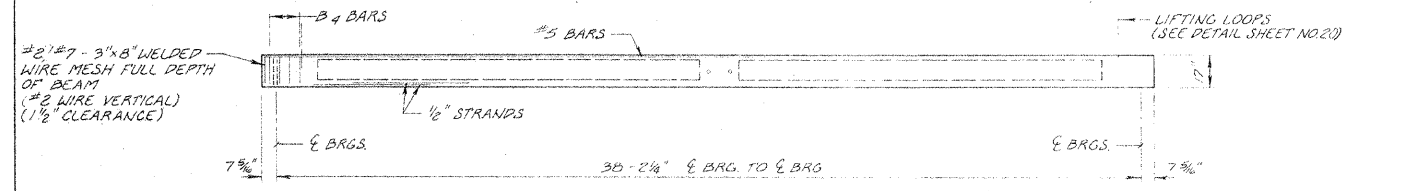
PLAN OF (C) DECK UNITS



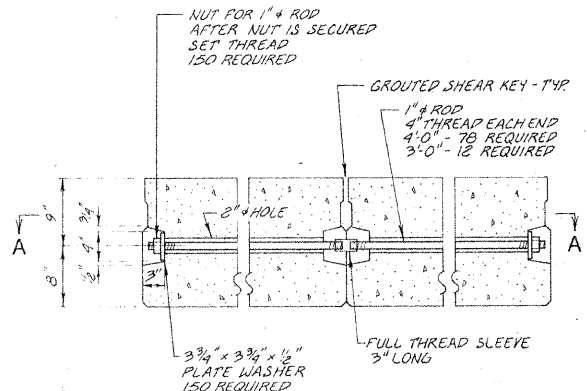
ELEVATION



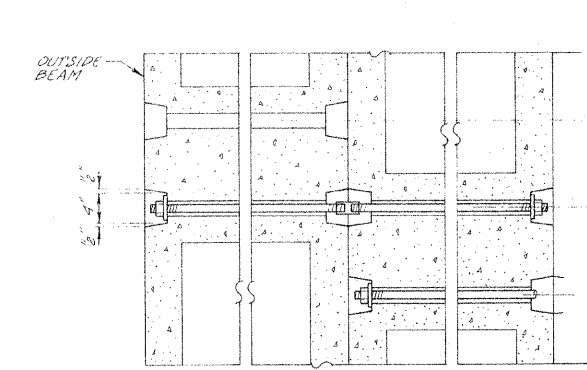
PLAN OF (D) DECK UNITS



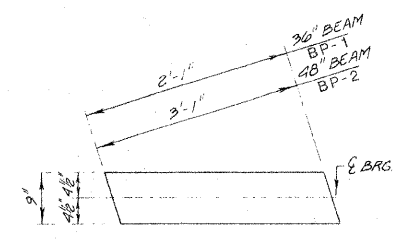
ELEVATION



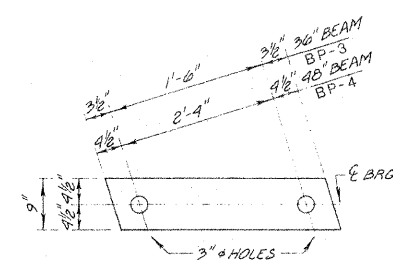
TYPICAL TRANSVERSE TIE ASSEMBLY



SECTION A-A



1/4" GRAPHITED ASBESTOS BRG. PAD (EXPANSION BEARINGS)



1/2" FABRIC BRG. PADS (FIXED BEARINGS)

GENERAL NOTES
 Prestressing steel shall be non-galvanized high strength, stress relieved 7-wire strand Grade 270. The nominal diameter shall be 1/2" and the nominal cross-sectional area shall be 0.153 sq. in.

The 1" diameter rods in the transverse tie assembly shall be tightened to a snug fit and the threads set. Pockets that receive transverse tie rod on outside beam shall be filled with grout after transverse tie assembly is in place.

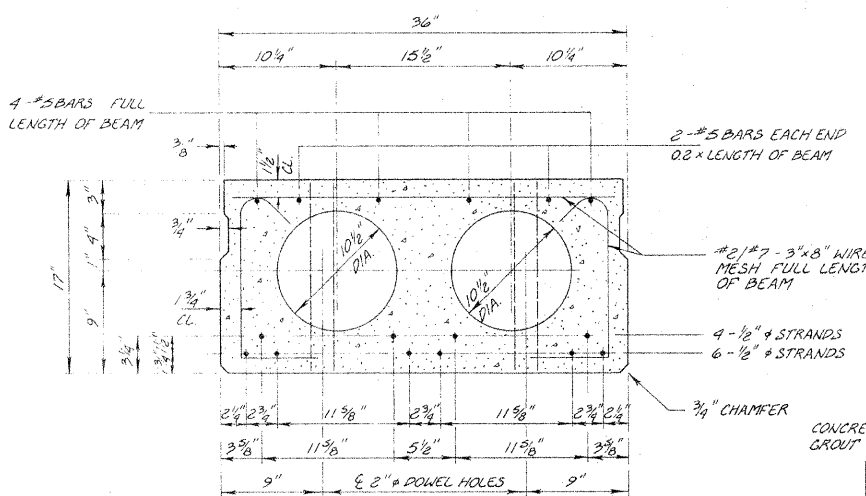
Cost of reinforcement and accessories cast into the beams, of bearing pads, of armor angles and of grouting longitudinal shear keys is included in unit bid price for "Precast Prestressed Concrete Bridge Deck".

Longitudinal shear keys shall be packed with a very dry mix of 2:1 sand and P.C. mortar.

After beams have been erected, holes for the dowel anchors shall be drilled into the sub-structure and the anchor dowels shall be grouted in place.

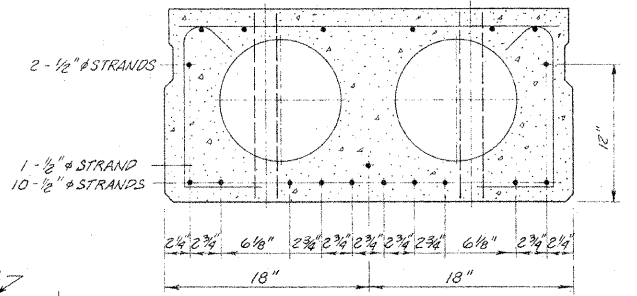
The 3" Galvanized Steel Conduit to be cast into the Deck beams shall conform to the requirements of American National Standard Institute C80.3. The cost of the conduit shall be included in the unit bid price for "Precast Prestressed Concrete Bridge Deck".

Portland Cement Mortar Fairing Course shall be placed along precast prestressed concrete bridge deck beams as required for fairing out any unevenness between adjacent deck beams prior to placing of waterproofing membrane and surfacing.

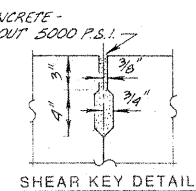


SECTION OF (B) DECK UNITS

NOTE
 DECK UNITS D HAVE THE IDENTICAL CROSS SECTION AS DECK UNITS B EXCEPT FOR ADDITIONAL 1/2" DIA. STRAND AS SHOWN BELOW



SECTION OF (D) DECK UNITS



SHEAR KEY DETAIL

SPANS 1 & 3
 10-1/2" DIA. STRANDS; EACH STRAND STRESSED TO 28,900 PSI
 6 STRANDS - 1 3/4" UP; 4 STRANDS 3 1/4" UP.
 f'ci = 4000 psi.

REVISIONS	
NAME	DATE
D.C.N.	1-30-78
AS BUILT D.C.N.	10-9-80
Added	7-21-11

ILLINOIS DIVISION OF HIGHWAYS
DECK BEAMS (C&D) & DETAILS
 ARDMORE AVENUE BRIDGE
 SCALE: AS SHOWN
 DRAWN BY: D.C.N.
 DATE: 12-28-77
 CHECKED BY: G.A.S.