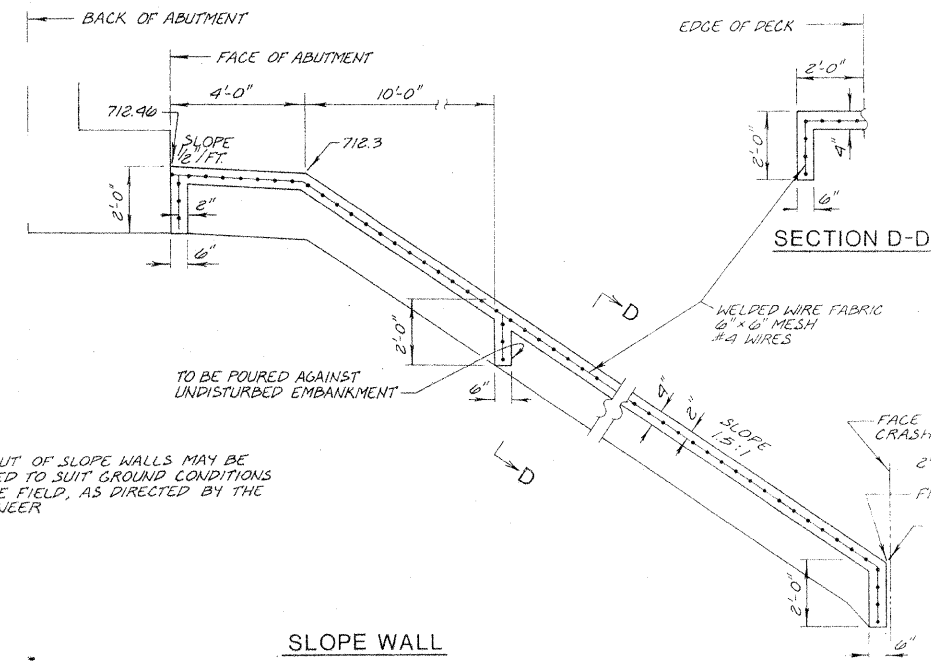


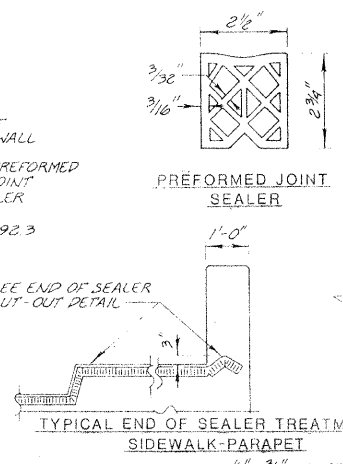
00115-22

RTE	SECTION	COUNTY	TOTAL SHEETS	SHEET NO.
PAU 2631	76-000916 00-65	DU PAGE	36	22
STA.	TO STA.			
FED. ROAD DIST. NO.	ILLINOIS	FED. AID PROJECT MS-5003(100)		



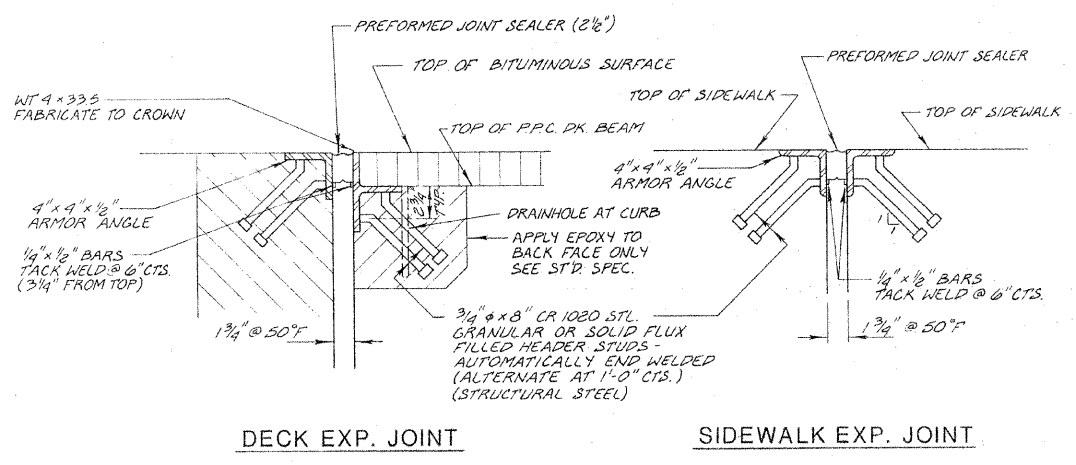
NOTE:
LAYOUT OF SLOPE WALLS MAY BE VARIED TO SUIT GROUND CONDITIONS IN THE FIELD, AS DIRECTED BY THE ENGINEER

SLOPE WALL



PREFORMED JOINT SEALER

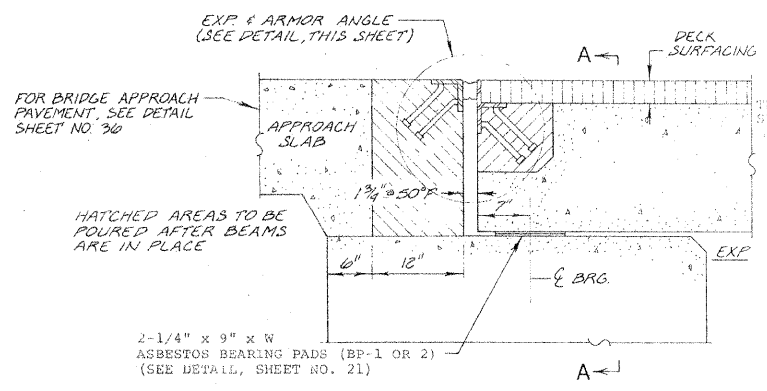
TYPICAL END OF SEALER TREATMENTS SIDEWALK-PARAPET



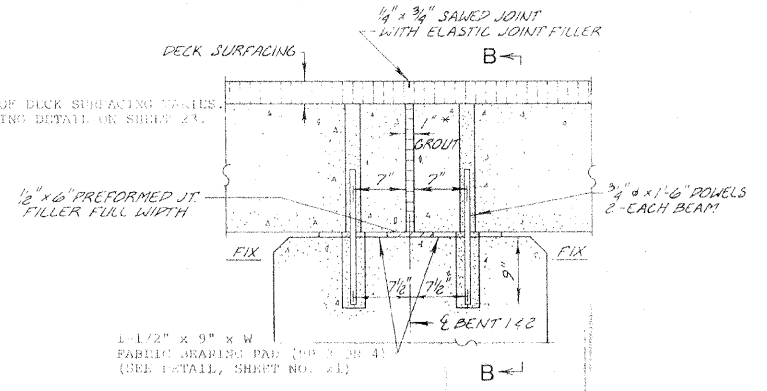
DECK EXP. JOINT

SIDEWALK EXP. JOINT

EXPANSION AND ARMOR ANGLE DETAILS



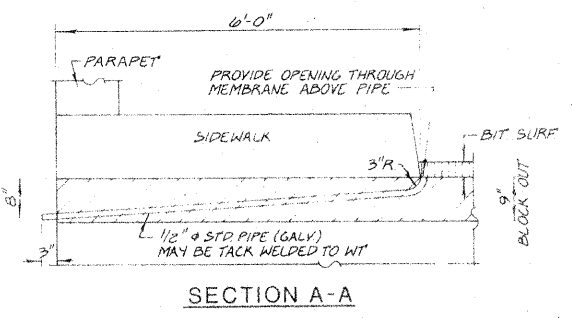
EXPANSION BRG. DETAIL (ABUTMENT)



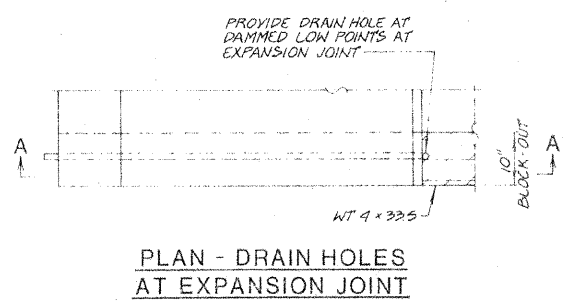
FIXED BRG. DETAIL (BENT #1 & #2)

Joint shall be packed with a very dry mix of 2:1 sand and 1:1 C. mortar.
Dimension may vary plus or minus to accommodate tolerance in beam lengths.

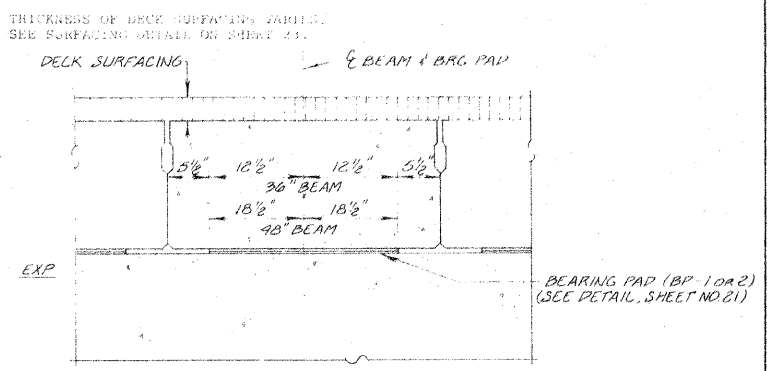
After beams have been erected, 1 1/4\"/>



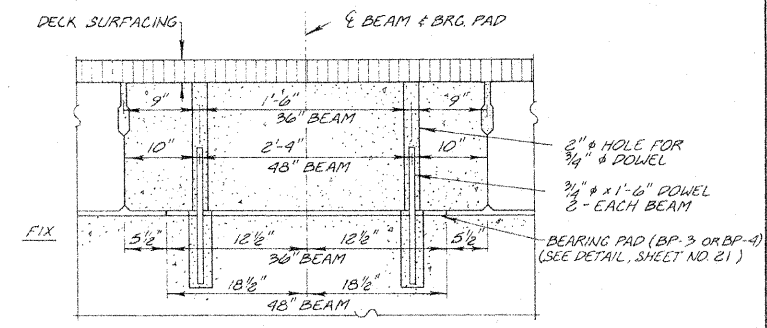
SECTION A-A



PLAN - DRAIN HOLES AT EXPANSION JOINT



SECTION A-A (EXP. END)



SECTION B-B (FIXED END)

BILL OF MATERIAL

ITEM	UNIT	QUANTITY
SLOPE WALL (4 INCH)	SQ. YDS.	600
PREFORMED JT. SEALER 2 1/2"	LIN. FT.	130

ILLINOIS DIVISION OF HIGHWAYS
MISC. BRIDGE DETAILS (1)

ARDMORE AVENUE BRIDGE

REVISIONS	
NAME	DATE
D.C.N.	1-30-78
Added	7-21-11

SCALE: AS SHOWN

DRAWN BY: D.C.N.

DATE: 12-28-77

CHECKED BY: G.A.S.