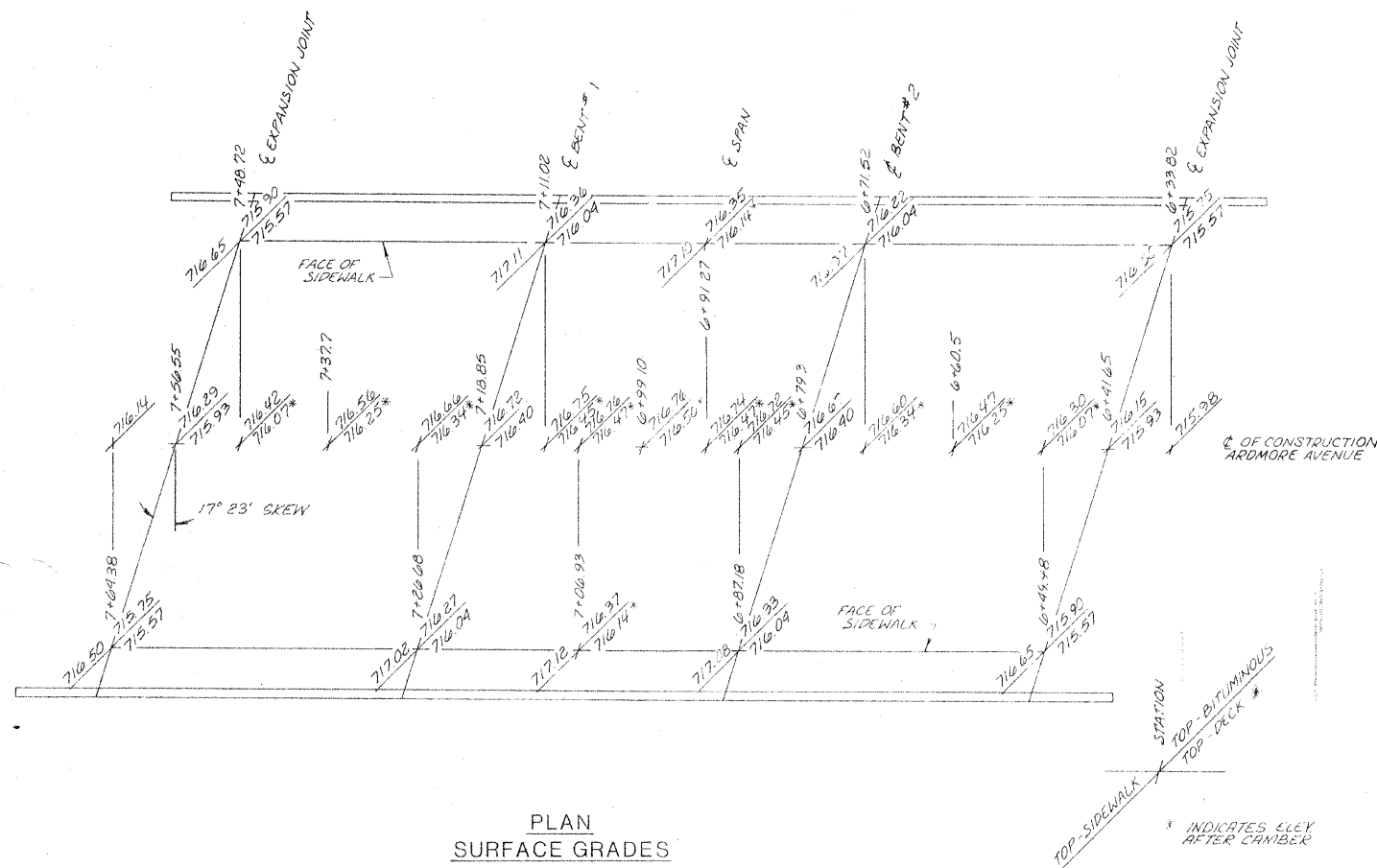
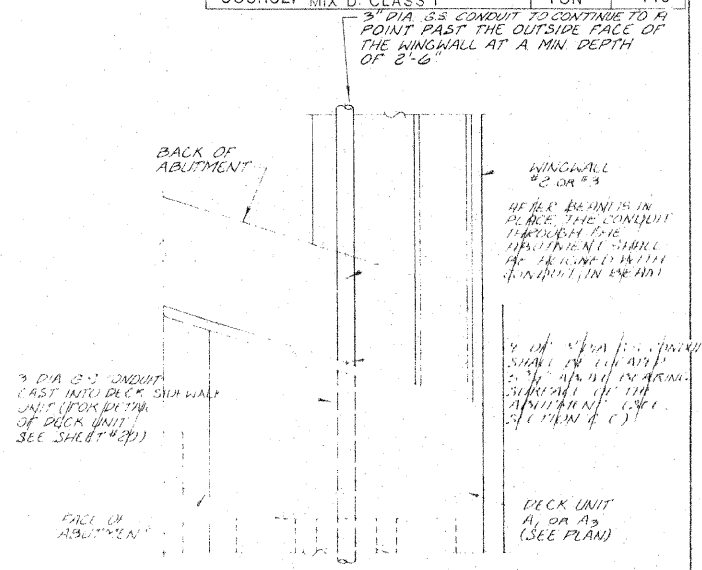


RTE	SECTION	COUNTY	TOTAL SHEETS	SHEET NO.
FAU 00-65	76-00046-00-65	DUPAGE	34	23
STA.		TO STA.		
FED. ROAD DIST. NO.		ILLINOIS FED. AID PROJECT NO. 5003(100)		

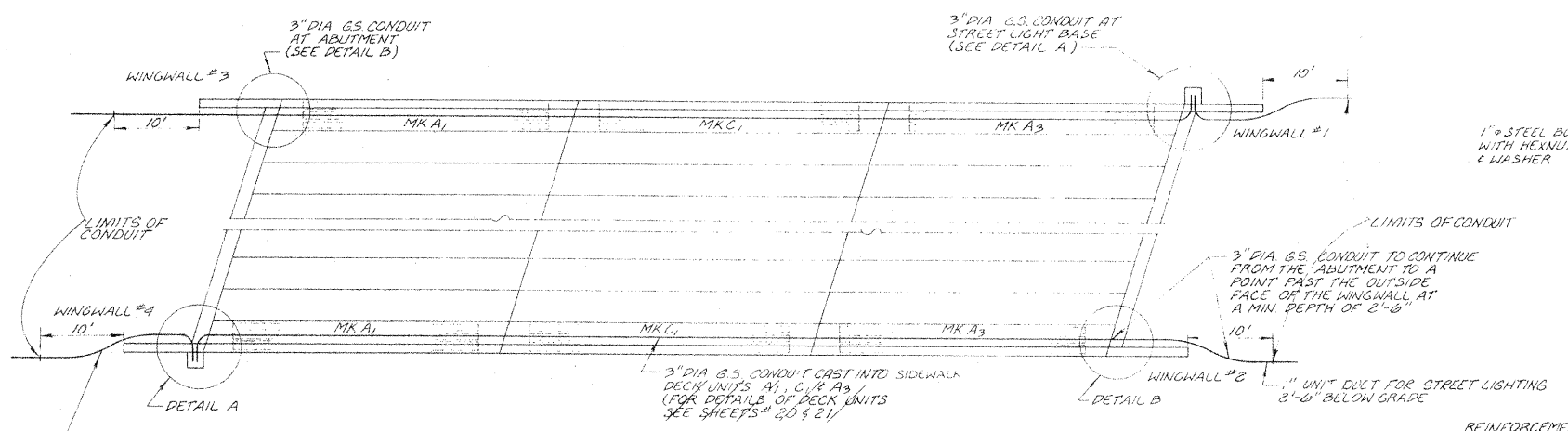
BILL OF MATERIALS		
ITEM	UNIT	QUANT.
WATERPROOF MEMBRANE SYSTEM	SQ. YD.	630
BITUMINOUS CONCRETE SURFACE COURSE, MIX D, CLASS I	TON	110



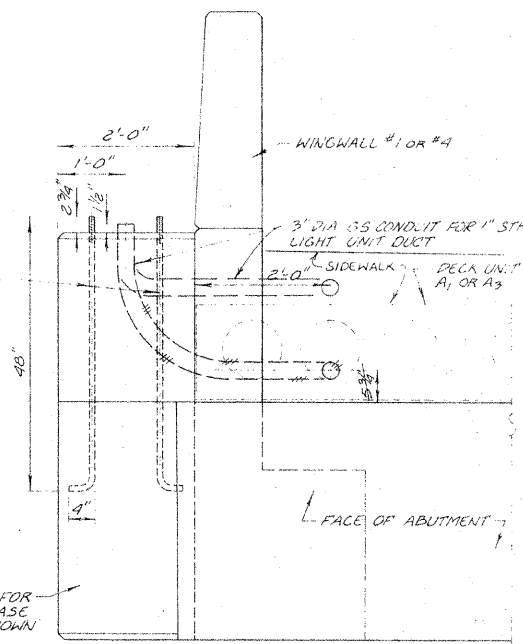
PLAN SURFACE GRADES ON BRIDGE DECK



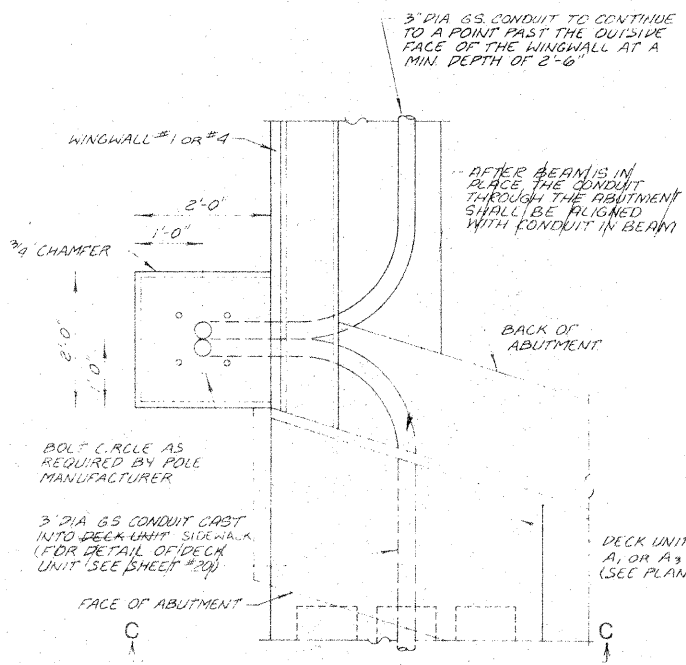
DETAIL B AT WINGWALL #2 & #3



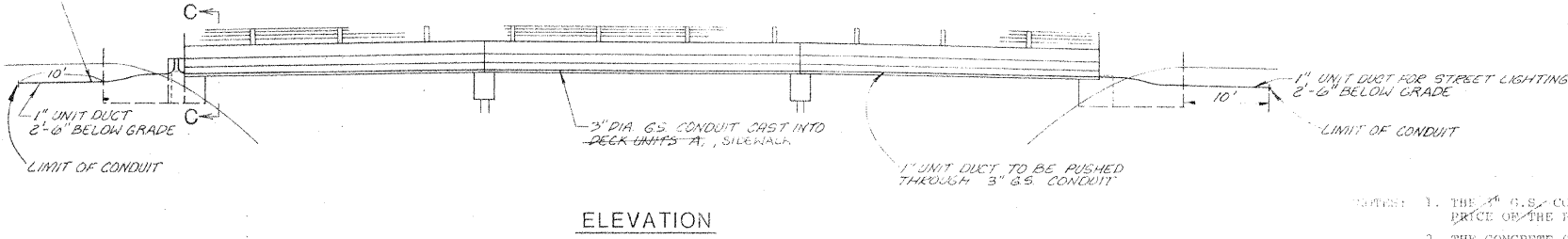
PLAN STREET LIGHT CABLE DUCT - RACEWAY



SECTION C-C AT WINGWALL #1 & #4



DETAIL A AT WINGWALL #1 & #4



ELEVATION

- NOTES:
1. THE 3" G.S. CONDUIT SHOWN SHALL BE INCLUDED IN THE UNIT PRICE OF THE PRECAST/PRESTRESSED CONCRETE DECK BEAMS.
  2. THE CONCRETE STREET LIGHTING FOUNDATIONS WHICH ARE SHOWN AS PART OF THE BRIDGE STRUCTURE WILL BE PAID AS PART OF THE BRIDGE.
  3. THE 1" UNIT DUCT SHOWN WILL BE PAID FOR SEPARATELY. (SEE STREET LIGHTING PLANS)

REVISIONS	
NAME	DATE
R.L. Gross	1-30-78
AS BUILT D.C.N.	10-9-80
Added	7-21-11

ILLINOIS DIVISION OF HIGHWAYS  
MISC. BRIDGE DETAILS (2)

ARDMORE AVENUE BRIDGE

SCALE: AS SHOWN  
DATE: 12-28-77  
DRAWN BY: D.C.N.  
CHECKED BY: G.A.S.