


# GENERAL NOTES

1. EXISTING SITE TOPOGRAPHY, UTILITIES, RIGHT-OF-WAY AND HORIZONTAL CONTROL SHOWN ON THE DRAWINGS WERE OBTAINED FROM A SURVEY PREPARED BY:  
  
V3 COMPANIES OF ILLINOIS LTD.  
7325 JANES AVENUE  
WOODRIDGE, IL 60517  
  
COPIES OF THE SURVEY ARE AVAILABLE FROM THE ENGINEER. SITE CONDITIONS MAY HAVE CHANGED SINCE THE SURVEY WAS PREPARED. CONTRACTORS TO VISIT SITE TO FAMILIARIZE THEMSELVES WITH THE CURRENT CONDITIONS.
2. ALL EXISTING TOPOGRAPHY, UNDERGROUND UTILITIES, STRUCTURES AND ASSOCIATED FACILITIES SHOWN ON THESE DRAWINGS HAVE BEEN PLOTTED FROM AVAILABLE SURVEYS AND RECORDS. THEREFORE, THEIR LOCATIONS AND ELEVATIONS MUST BE CONSIDERED APPROXIMATE ONLY. THERE MAY BE OTHER FACILITIES, THE EXISTENCE OF WHICH ARE NOT PRESENTLY KNOWN.
3. CONTRACTOR IS TO VERIFY ALL EXISTING STRUCTURES AND FACILITIES AND NOTIFY ENGINEER OF ANY DISCREPANCIES PRIOR TO ORDERING MATERIAL AND STARTING WORK.
4. ALL ELEVATIONS ARE BASED ON USGS DATUM. BENCHMARK LOCATIONS AND ELEVATIONS ARE SHOWN ON PLANS.
5. ALL APPLICABLE PROVISIONS OF THE CURRENT OCCUPATIONAL SAFETY AND HEALTH ACT ARE HEREIN INCORPORATED BY REFERENCE.
6. ALL COORDINATES REFER TO EDGE OF PAVEMENT AND CENTERLINE OF MANHOLE STRUCTURE UNLESS OTHERWISE NOTED.
7. THE CONTRACTOR SHALL NOTIFY THE ENGINEER 48 HOURS PRIOR TO COMMENCING ANY WORK AND FOR ANY NEW CONSTRUCTION REQUIRING INSPECTION.
8. WORK IS NOT PERMITTED OUTSIDE THE R.O.W. LIMITS WITHOUT AN EASEMENT. ANY AREAS IMPACTED OUTSIDE OF THE CONSTRUCTION LIMIT LINE SHALL BE RETURNED TO ITS PREVIOUS STATE.
9. STREET PAVING AND CURBS TO REMAIN SHALL BE PROTECTED FROM DAMAGE AND IF DAMAGED, SHALL BE REPLACED PROMPTLY IN CONFORMANCE WITH IDOT STANDARD SPECIFICATIONS IN MATERIALS AND WORKMANSHIP.
10. CONTRACTOR SHALL MAINTAIN ACCURATE RECORDS OF ALL UNDERGROUND UTILITY CONSTRUCTION AND SUBMIT "RECORD" INFORMATION TO ENGINEER FOR USE IN PREPARING "RECORD DRAWINGS".
11. ALL TREES TO BE SAVED SHALL BE IDENTIFIED PRIOR TO CONSTRUCTION BY THE ENGINEER AND SHALL BE PROTECTED PER IDOT ARTICLE 201.05. THE RIGHT-OF-WAY LINE AND LIMITS OF THE CONTRACTOR'S OPERATIONS SHALL BE CLEARLY DEFINED THROUGHOUT THE CONSTRUCTION PERIOD. ALL TREES NOTED TO REMAIN SHALL BE PROTECTED FROM DAMAGE TO TRUNKS, BRANCHES AND ROOTS. NO EXCAVATING, FILLING OR GRADING IS TO BE DONE INSIDE THE DRIP LINE OF TREES UNLESS OTHERWISE INDICATED.
12. CONSTRUCTION ACCESS POINTS TO THE SITE SHALL BE PROTECTED IN SUCH A WAY AS TO PREVENT ACCUMULATION OF MUD OR SOIL ON PUBLIC THOROUGHFARES. AT THE END OF EACH DAY AND AS OFTEN AS NECESSARY THE CONTRACTOR SHALL CLEAN UP ALL MUD OR SOIL WHICH HAS BEEN TRACKED ONTO PUBLIC STREETS OR AS REQUIRED BY THE ENGINEER.
13. FOR REGULATED UTILITY LOCATIONS, THE CONTRACTOR SHALL CONTACT THE JOINT UTILITY LOCATION INFORMATION FOR EXCAVATORS, "J.U.L.I.E." AT 1-800-892-0123. LOCAL GOVERNMENT AGENCIES SHOULD BE CONTACTED BY THE CONTRACTOR FOR LOCATION OF ALL NONREGULATED UTILITY LOCATIONS. PLEASE CALL FOR LOCATES 48 HOURS IN ADVANCE OF CONSTRUCTION.
14. WHEN AN EXISTING DRAINAGE ROUTE, EITHER A STORM SEWER OR WATERWAY, IS INTERRUPTED DUE TO THE SEWER INSTALLATION, THE DRAINAGE ROUTE SHALL BE REESTABLISHED TO ORIGINAL CONDITIONS BY THE END OF THE SAME WORK DAY. DRAINAGE MUST BE MAINTAINED AT ALL TIMES DURING CONSTRUCTION.
15. THE CONTRACTOR IS RESPONSIBLE FOR HAVING A SET OF "APPROVED" ENGINEERING PLANS WITH THE LATEST REVISION DATE ON THE JOB SITE PRIOR TO THE START OF CONSTRUCTION.
16. BAND SEAL CONNECTORS OR EQUIVALENT SHALL BE USED TO JOIN PIPES OF DISSIMILAR MATERIAL.
17. THE CONTRACTOR WILL NOT BE ALLOWED TO SET UP A YARD OR FIELD OFFICE ON THE STATE OR VILLAGE OF VILLA PARK RIGHT OF WAY WITHOUT WRITTEN PERMISSION FROM THE ENGINEER.
18. FOR STRUCTURAL GENERAL NOTES SEE STRUCTURAL PLANS.
19. TEN (10) FOOT TRANSITIONS SHALL BE USED TO MATCH PROPOSED ITEMS OF WORK TO EXISTING ITEMS IN THE FIELD, UNLESS OTHERWISE SHOWN. THE TRANSITIONS SHALL BE PAID FOR AT THE CONTRACT PRICE FOR THE PROPOSED ITEM OF WORK SPECIFIED.
20. IT IS THE CONTRACTOR'S SOLE RESPONSIBILITY TO COORDINATE WITH THE CC&P RAILROAD WHENEVER CONSTRUCTION ACTIVITY IS WITHIN 25 FEET OF THE RAILROAD ROW. THE CONTRACTOR SHALL RETAIN FLAGMEN EMPLOYED AND DESIGNATED BY THE CC&P RAILROAD TO MONITOR ON-COMING TRAIN TRAFFIC, AND ADVISE CONTRACTOR PERSONNEL WHEN ACTIVITY ON OR NEAR THE RAILROAD RIGHT-OF-WAY MAY PROCEED. THIS ITEM WILL BE PAID FOR ACCORDING TO ARTICLE 107.12 AND WILL BE REIMBURSED ACCORDING TO ARTICLE 109.05.
21. WHEN MILLED PAVEMENT IS OPEN TO TRAFFIC THE MAXIMUM GRADE DIFFERENTIAL BETWEEN PASSES OF THE MILLING MACHINE SHALL NOT EXCEED 1 1/2 INCHES (40 MM) WHERE THE SPEED LIMIT IS 45 MPH OR LESS. WITH WRITTEN APPROVAL FROM THE ENGINEER, A MAXIMUM GRADE DIFFERENTIAL OF 3 INCHES MAY BE ALLOWED IF THE EDGE OF THE MILLING IS SLOPED A MINIMUM 1:3 (V:H).
22. BUTT JOINTS WILL BE INSTALLED AT THE ENDS OF ALL RESURFACING (WHERE RESURFACING MEETS EXISTING PAVEMENT), IN ACCORDANCE WITH THE "BUTT JOINT AND HMA TAPER DETAILS" SHEET INCLUDED IN THE PLANS UNLESS OTHERWISE SPECIFIED.
23. BEFORE BEGINNING ANY WORK, THE CONTRACTOR SHALL RETAIN AND RECORD FOR FUTURE REFERENCE ALL EXISTING PAVEMENT MARKING LINES (AND RAISED REFLECTIVE PAVEMENT MARKERS) IN ORDER THAT THESE LOCATIONS CAN BE REESTABLISHED FOR STRIPING. EXACT LOCATIONS OF ALL PAVEMENT MARKINGS SHALL BE AS DIRECTED BY THE ENGINEER.
24. ALL PAVEMENT PATCHING LOCATIONS WILL BE DETERMINED IN THE FIELD BY THE ENGINEER.
25. THE CONTRACTOR SHALL BE REQUIRED TO PROVIDE ACCESS TO ADJUTING PROPERTY AT ALL TIMES DURING THE CONSTRUCTION OF THE PROJECT.
26. IT SHALL BE THE CONTRACTOR'S RESPONSIBILITY TO VERIFY ALL DIMENSIONS AND CONDITIONS EXISTING IN THE FIELD PRIOR TO CONSTRUCTION AND ORDERING MATERIALS.

# INDEX OF SHEETS

COVER SHEET	1
INDEX OF SHEETS, HIGHWAY STANDARDS, GENERAL NOTES	2
SUMMARY OF QUANTITIES	3-5
TYPICAL SECTIONS ARDMORE AVENUE	6
TYPICAL SECTIONS HILL STREET	7
ALIGNMENT, TIES AND BENCHMARKS	8
ROADWAY PLAN AND PROFILE ARDMORE AVENUE	9
ROADWAY PLAN HILL STREET	10
DETOUR PLAN	11
EROSION AND SEDIMENT CONTROL	12
DRAINAGE AND UTILITY PLAN ARDMORE AVENUE	13
PAVEMENT MARKING AND SIGNING ARDMORE AVENUE	14
STRUCTURAL PLANS	15-43
DISTRICT 1 STANDARD DETAILS	44-48
CROSS SECTIONS ARDMORE AVENUE	49-50
<b>EXISTING BRIDGE PLANS</b>	<b>51-63</b> 

# STATE STANDARDS



000001-06	STANDARD SYMBOLS, ABBREVIATIONS AND PATTERNS
001001-02	AREAS OF REINFORCEMENT BARS
001006	DECIMAL OF AN INCH AND OF A FOOT
280001-05	TEMPORARY EROSION CONTROL SYSTEMS
420001-07	PAVEMENT JOINTS
420101-04	24FT JOINTED PCC PAVEMENT
420401-08	BRIDGE APPROACH PAVEMENT CONNECTOR
515001-03	NAME PLATES FOR BRIDGES
602001-02	CATCH BASIN TYPE A
602401-03	MANHOLE TYPE A
604001-03	FRAME AND LIDS TYPE 1
604036-02	GRATE TYPE 8
604051-03	FRAME AND GRATE TYPE 11
606001-04	CONCRETE CURB TYPE B AND COMBINATION CONCRETE CURB AND GUTTER
630001-09	STEEL PLATE BEAM GUARDRAIL
631026-05	TRAFFIC BARRIER TERMINAL, TYPE 6
701501-06	URBAN LANE CLOSURE, LANE CLOSURE, 2L, 2W, UNDIVIDED
701801-04	MULTILANE 1W OR 2W CROSSWALK OR SIDEWALK CLOSURE
701901-01	TRAFFIC CONTROL DEVICES
780001-02	TYPICAL PAVEMENT MARKINGS
814001-02	HANDHOLES
878001-08	CONCRETE FOUNDATION DETAILS

HMA MIXTURE REQUIREMENTS CHART	
MIXTURE TYPE	AIR VOIDS
STABILIZED SUBBASE HOT MIX ASPHALT BAM (IL-19.0 mm), 4 1/2"	2% @ 30 GYR.
HOT-MIX ASPHALT SURFACE COURSE, MIX "D", N70 (IL 9.5 mm)	4% @ 70 GYR.
POLYMERIZED LEVELING BINDER (MACHINE METHOD), I! 4.75, N50	4% @ 50 GYR.
CLASS D PATCHES (HMA BINDER IL-19 mm) (8 INCHES)	4% @ 70 GYR.
STABILIZED SUBBASE HOT MIX ASPHALT BAM (IL 19.0 mm), 4 1/2"	

NOTE: THE UNIT WEIGHT USED TO CALCULATE ALL HOT MIX ASPHALT SURFACE MIXTURES IS 112 LBS/50 YD<sup>3</sup>/IN

THE "AC TYPE" FOR POLYMERIZED HMA MIXES SHALL BE "SBS/SBR PG 70-22" AND FOR NON-POLYMERIZED HMA THE "AC TYPE" SHALL BE "PG 64-22" UNLESS MODIFIED BY DISTRICT ONE SPECIAL PROVISIONS. FOR "PERCENT OF RAP" SEE DISTRICT ONE SPECIAL PROVISIONS.

revised 7-21-11

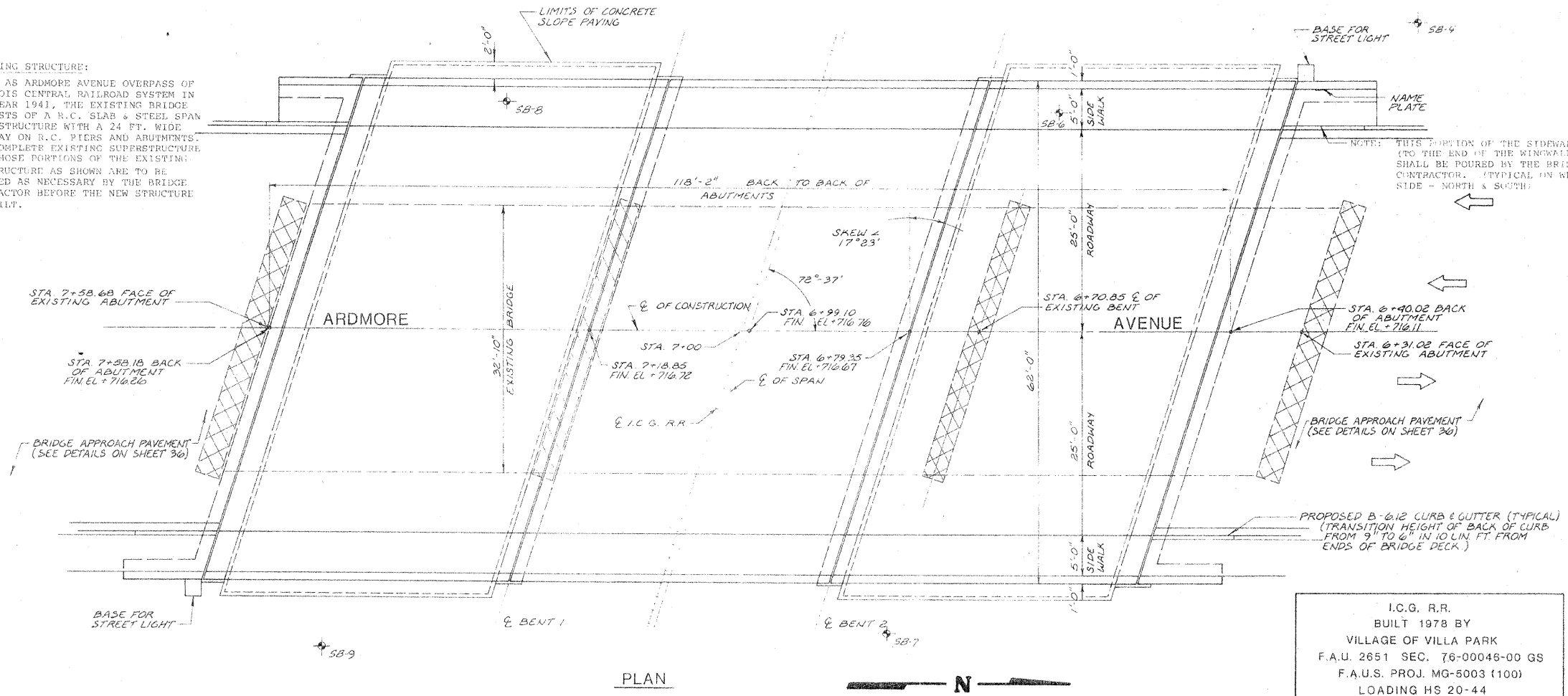
 V3 Companies 7325 Janes Avenue Woodridge, IL 60517 630.724.9200 phone 630.724.9202 fax www.v3co.com	USER NAME = #USER#	DESIGNED -	REVISED  7-21-2011	<b>STATE OF ILLINOIS</b> <b>DEPARTMENT OF TRANSPORTATION</b>	<b>ARDMORE AVENUE OVER CC&amp;P RAILROAD</b> <b>INDEX OF SHEETS, HIGHWAY STANDARDS, AND GENERAL NOTES</b>			F.A.U. RTE.	SECTION	COUNTY	SHEET NO.	TOTAL SHEETS
	PLOT SCALE = #SCALE#	DRAWN -	REVISED -		SCALE: NTS	SHEET NO. 1 OF 1 SHEETS	STA.	TO STA.	2651	07-00083-00-BR	DUPAGE	02
PLOT DATE = 6/13/2011	CHECKED -	REVISED -					CONTRACT NO. 63601			ILLINOIS FED. AID PROJECT		
	DATE -	REVISED -										

0015-14

BENCHMARK: SOUTHEAST FLANGE BOLT ON HYDRANT @ SOUTHEAST CORNER OF ARDMORE & SUNSET. ELEVATION 696.56

ROUTE	SECTION	COUNTY	TOTAL SHEETS	SHEET NO.
SAU 0631	76-00046-00-65	DUPAGE	36	14
STA.		TO STA.		
FED. ROAD DIST. NO.		ILLINOIS FED. AID PROJECT NO. 500(100)		

**EXISTING STRUCTURE:**  
BUILT AS ARDMORE AVENUE OVERPASS OF ILLINOIS CENTRAL RAILROAD SYSTEM IN THE YEAR 1941, THE EXISTING BRIDGE CONSISTS OF A R.C. SLAB & STEEL SPAN SUPERSTRUCTURE WITH A 24 FT. WIDE ROADWAY ON R.C. PIERS AND ABUTMENTS. THE COMPLETE EXISTING SUPERSTRUCTURE AND THOSE PORTIONS OF THE EXISTING SUBSTRUCTURE AS SHOWN ARE TO BE REMOVED AS NECESSARY BY THE BRIDGE CONTRACTOR BEFORE THE NEW STRUCTURE IS BUILT.

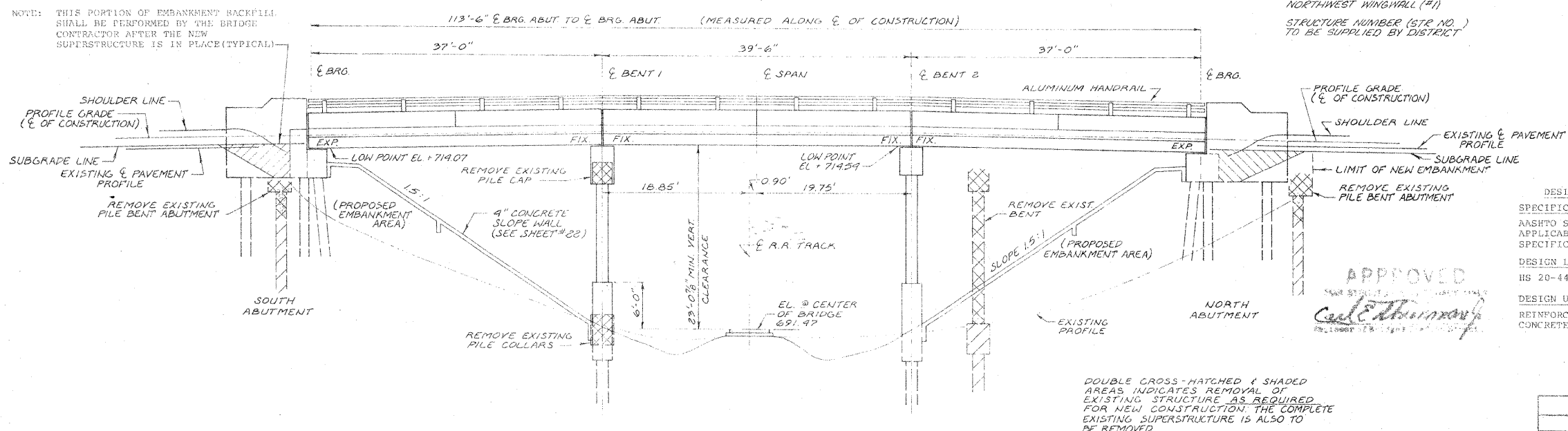


I.C.G. R.R.  
BUILT 1978 BY  
VILLAGE OF VILLA PARK  
F.A.U. 2651 SEC. 76-00046-00 GS  
F.A.U.S. PROJ. MG-5003 (100)  
LOADING HS 20-44  
STR. NO.

**NAME PLATE**  
SEE ST'D 2113

NOTES:  
LOCATE NAME PLATE AT THE NORTHWEST WINGWALL (#1)  
STRUCTURE NUMBER (STR. NO.) TO BE SUPPLIED BY DISTRICT

NOTE: THIS PORTION OF EMBANKMENT BACKFILL SHALL BE PERFORMED BY THE BRIDGE CONTRACTOR AFTER THE NEW SUPERSTRUCTURE IS IN PLACE (TYPICAL)



DOUBLE CROSS-HATCHED & SHADED AREAS INDICATES REMOVAL OF EXISTING STRUCTURE AS REQUIRED FOR NEW CONSTRUCTION. THE COMPLETE EXISTING SUPERSTRUCTURE IS ALSO TO BE REMOVED.

**TOTAL BRIDGE BILL OF MATERIALS**

ITEM	UNIT	SUPER-STRUCTURE	SUB-STRUCTURE	TOTAL
BITUMINOUS CONCRETE SURFACE COURSE, MIXTURE D, CLASS I.	TON	110		110
REMOVAL OF EXISTING STRUCTURE	LUMP SUM			1
PROTECTIVE COAT	SQ. YD.	200		200
CLASS X CONCRETE	CU. YD.	68	307	375
PRECAST PRESTRESSED CONCRETE DECK BEAMS (17")	SQ. FT.	7,103		7,103
ALUMINUM RAILING, TYPE L	LIN. FT.	230		230
REINFORCEMENT BARS	POUNDS	545	32,675	33,220
REINFORCEMENT BARS, EPOXY COATED	POUNDS	5,235	380	5,615
FURNISHING METAL PILE SHELLS, 12"	LIN. FT.		462	462
FURNISHING METAL PILE SHELLS, 14"	LIN. FT.		2372	2372
DRIVING AND FILLING SHELLS	LIN. FT.		2834	2834
TEST PILE METAL SHELLS	EACH		3	3
NAME PLATES	EACH	1		1
SLOPE WALL, 4 INCH	SQ. YD.		600	600
WATERPROOF MEMBRANE SYSTEM	SQ. YD.	650		650
PERFORMED JOINT SEALER 2 1/2"	LIN. FT.	130		130
PORTLAND CEMENT MORTAR PATCHING COURSE	LIN. FT.	1600		1600

**GENERAL NOTES**

- SEE SPECIAL PROVISIONS FOR BORING DATA.
- ALL STRUCTURAL STEEL SHALL BE SHOP PAINTED WITH TWO COATS OF BASIC LEAD SILICO CHROMATE PAINT.
- EXPANSION GUARDS WHICH ARE NOT CAST IN THE PRECAST UNIT SHALL BE FABRICATED AND ERECTED IN ACCORDANCE WITH ARTICLE 503.07(c) OF THE STANDARD SPECIFICATIONS. THE COST SHALL BE INCLUDED IN THE UNIT BID PRICE FOR PRECAST PRESTRESSED CONCRETE BRIDGE DECK.
- SLOPE WALL SHALL BE REINFORCED WITH WELDED WIRE FABRIC 6" x 6" MESH, WEIGHING 58# PER 100 SQ. FT.
- THE CONTRACTOR SHALL DRIVE 1 METAL SHELL TEST PILE IN A PERMANENT LOCATION AT THE NORTH ABUTMENT AND 1 METAL SHELL TEST PILE IN A PERMANENT LOCATION AT BENTS #1 AND #2 AS DIRECTED BY THE ENGINEER BEFORE ORDERING THE REMAINDER OF THE PILES.
- CONCRETE PILES AT ABUTMENTS SHALL BE DRIVEN IN HOLES PRECURED THROUGH THE EMBANKMENT IN ACCORDANCE WITH ARTICLE 513.09(c) OF THE STANDARD SPECIFICATIONS.
- THE TOP SURFACE OF THE BEAMS SHALL BE FINISHED IN ACCORDANCE WITH ARTICLE 505.06 OF THE STANDARD SPECIFICATIONS EXCEPT THAT THE SURFACE SHALL NOT BE ROUGHENED BY BROOMING. THE FINISHED SURFACE SHALL BE FREE OF DEPRESSIONS OR HIGH SPOTS WITH SHARP CORNERS.
- THE EMBANKMENT CONFIGURATION SHOWN SHALL BE THE MINIMUM EMBANKMENT THAT MUST BE CONSTRUCTED PRIOR TO CONSTRUCTION OF THE ABUTMENTS.
- THE CONCRETE RAIL SECTION ABOVE THE MANDATORY CONSTRUCTION JOINT AT THE TOP OF THE SIDEWALK SHALL BE CONSTRUCTED OF CLASS X CONCRETE, EXCEPT THE AGGREGATES SHALL CONFORM TO THE REQUIREMENTS OF HANDRAIL CONCRETE.
- PROTECTIVE COAT SHALL NOT BE APPLIED TO SURFACES TO WHICH WATERPROOFING MEMBRANE SYSTEM IS APPLIED.

**DESIGN DATA**

**SPECIFICATIONS**  
AASHTO STANDARD SPECIFICATIONS FOR HIGHWAY BRIDGES - 1973  
APPLICABLE INTERIMS AND ALL APPLICABLE LATEST STANDARD SPECIFICATIONS FOR ROAD AND BRIDGE CONSTRUCTION - 1976

**DESIGN LOADING**  
HS 20-44

**DESIGN UNIT STRESSES**  
REINFORCING STEEL  $f_s = 20,000$  P.S.I.  
CONCRETE (CAST IN PLACE)  $f_c = 3,500$  P.S.I.  $f'_c = 1,400$  P.S.I.  $n = 8.5$

PRECAST PRESTRESSED CONCRETE DECK BEAMS:  
PRESTRESSING STRANDS 1/2" (7-WIRE)  
 $f'_s = 270,000$  P.S.I.  
 $f'_si = 189,000$  P.S.I.  
 $f'_c = 3,000$  P.S.I.  
 $f'_ci =$  SEE INDIVIDUAL BEAM DETAILS

**REVISIONS**

NAME	DATE
D.C.N.	1-30-78
Added	7-21-11

ILLINOIS DIVISION OF HIGHWAYS

**GENERAL BRIDGE PLAN**

**ARDMORE AVENUE BRIDGE**

SCALE: DRAWN BY: D.C.N.

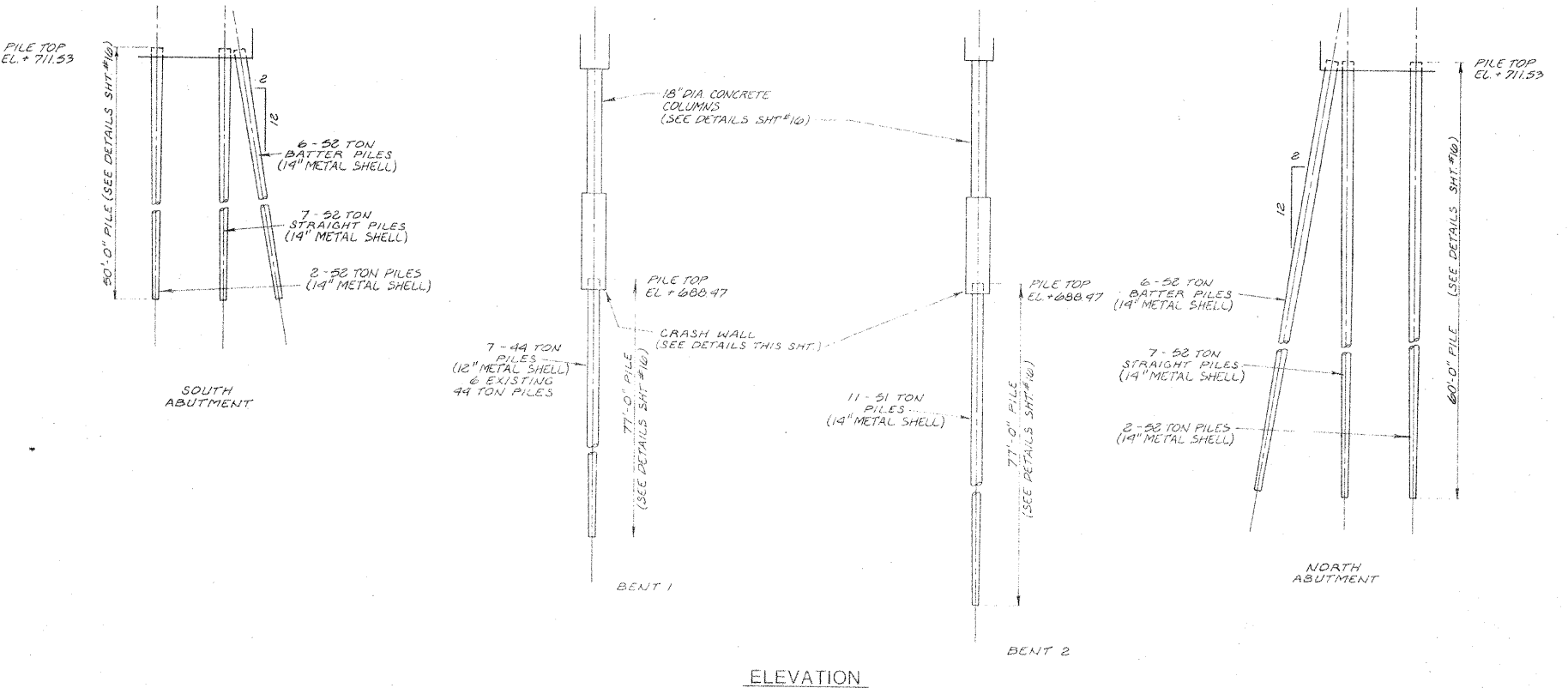
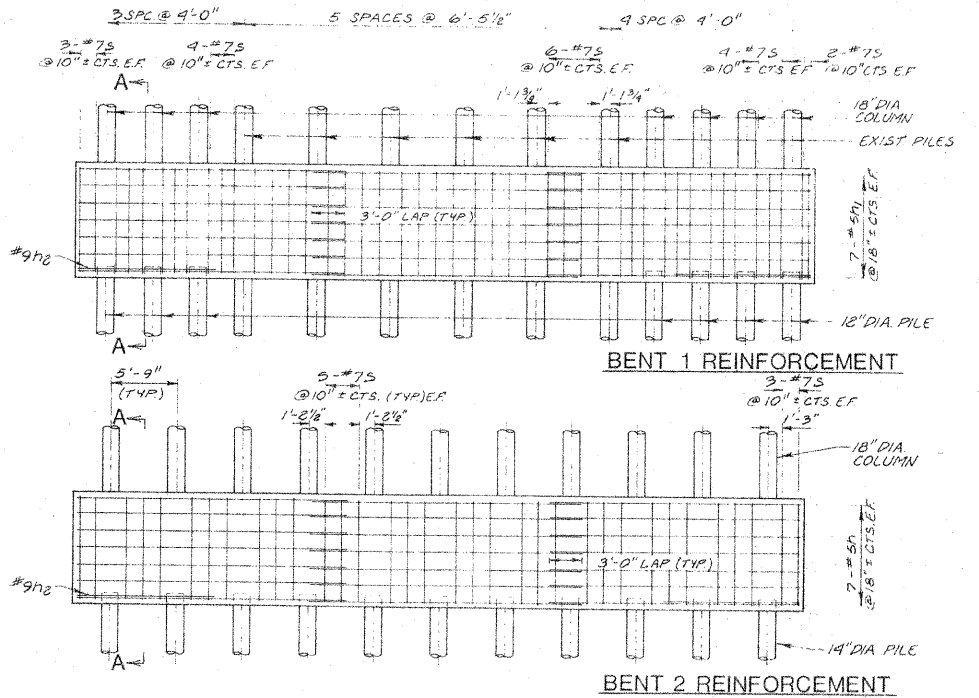
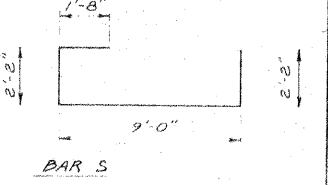
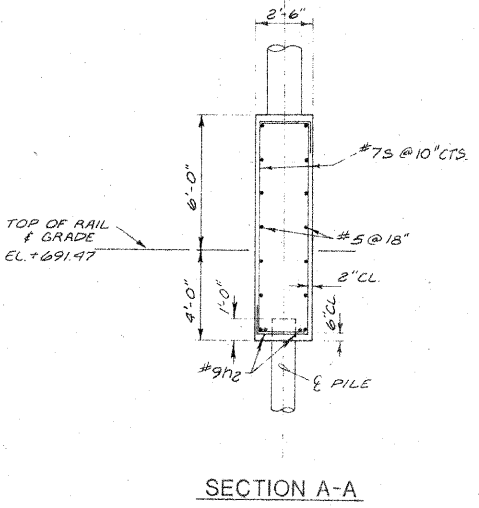
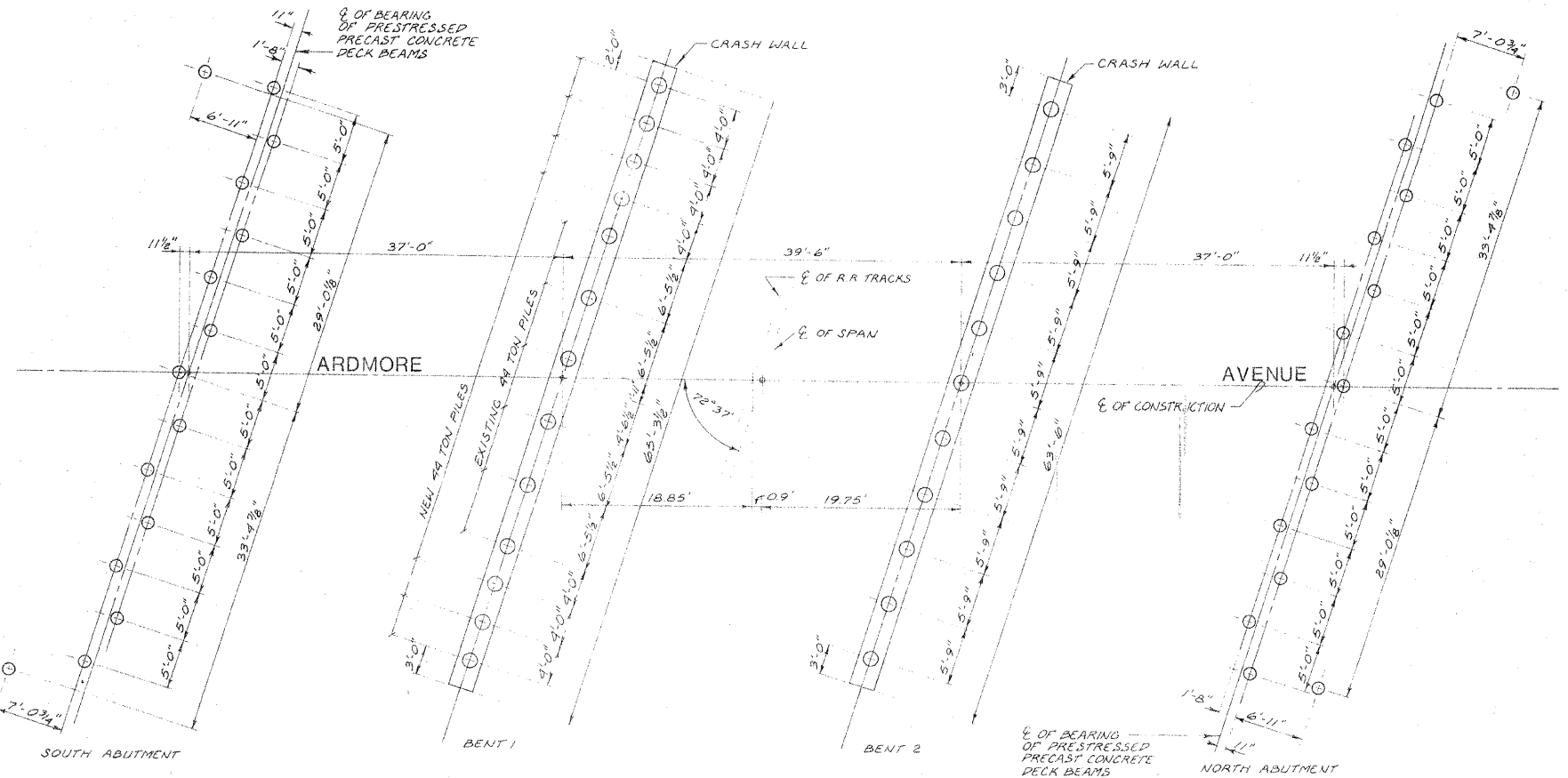
DATE: 12-28-77 CHECKED BY: G.A.S.

0015-14

ROUTE	SECTION	COUNTY	TOTAL SHEETS	SHEET NO.
FAU 2651	76-00046-00-65	DUPAGE	36	15
STA.		TO STA.		
FED. ROAD DIST. NO.		ILLINOIS FED. AID PROJECT/AG-5003(400)		

BENT #1 & #2 CRASH WALL  
BILL OF MATERIAL

BAR	NO.	SIZE	LENGTH	SHAPE
h	42	#5	23'-0"	—
h <sub>1</sub>	42	#5	23'-8"	—
h <sub>2</sub>	8	#9	12'-0"	—
S	238	#7	15'-0"	□
CLASS X CONCRETE REINFORCEMENT BARS			CU. YDS.	120
			POUNDS	9,675



REVISIONS	
NAME	DATE
RCN	1-30-78
Added	7-21-11

ILLINOIS DIVISION OF HIGHWAYS

**PILE PLAN**

ARDMORE AVENUE BRIDGE

SCALE: AS SHOWN      DRAWN BY: D.C.N.

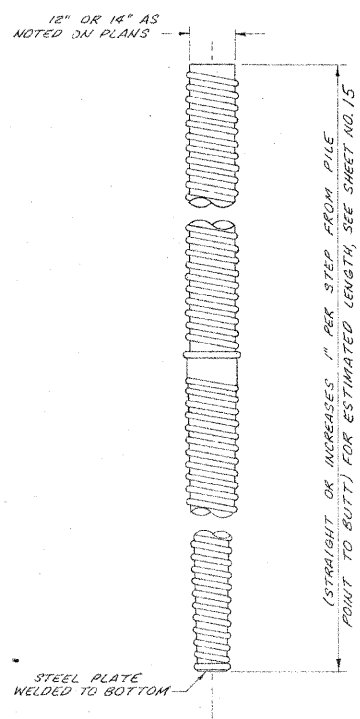
DATE: 12-28-77      CHECKED BY: G.A.S.

02115-16

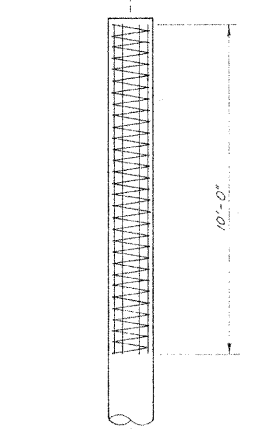
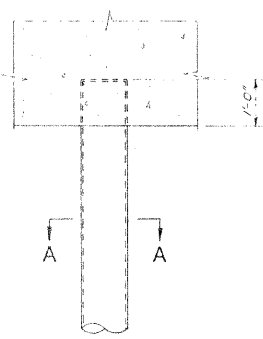
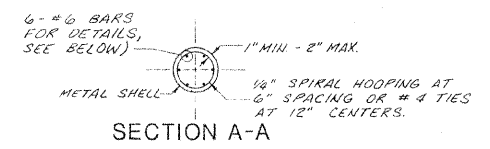
ROUTE	SECTION	COUNTY	TOTAL SHEETS	SHEET NO.
FAU 76-00046-2651	00-65	DUPAGE	36	16
STA.		TO STA.		
FED. ROAD DIST. NO.		ILLINOIS FED. AID PROJECT NO. 5003(100)		

**COLUMN BILL OF MATERIAL**

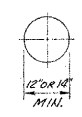
BAR	NO.	SIZE	LENGTH	SHAPE
V	56	#9	23'-0"	
V <sub>1</sub>	7	#4	213"	SPIRAL
S	162	#4	4'-3"	
V <sub>2</sub>	88	#9	24'-6"	
V <sub>3</sub>	11	#4	236"	SPIRAL
METAL PILE SHELLS - 12"			LIN. FT.	462
METAL PILE SHELLS - 14"			LIN. FT.	2,372
CLASS X CONCRETE (COLUMN)			CU. YDS.	16
REINFORCEMENT (COLUMN)			POUNDS	14,900
TEST PILES			EACH	3



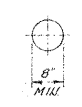
REINFORCEMENT IS INCIDENTAL TO THE COST OF FURNISHING PILES.



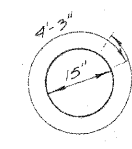
AT LEAST 10% OF THE LENGTH OF PILE SHALL HAVE A BUTT DIAMETER EQUAL TO OR GREATER THAN 12" OR 14". THE THICKNESS OF THE SHELL SHALL BE 0.1793 IN. FOR 42 T. PILES AND 0.25" FOR 52 T. PILES.



BUTT



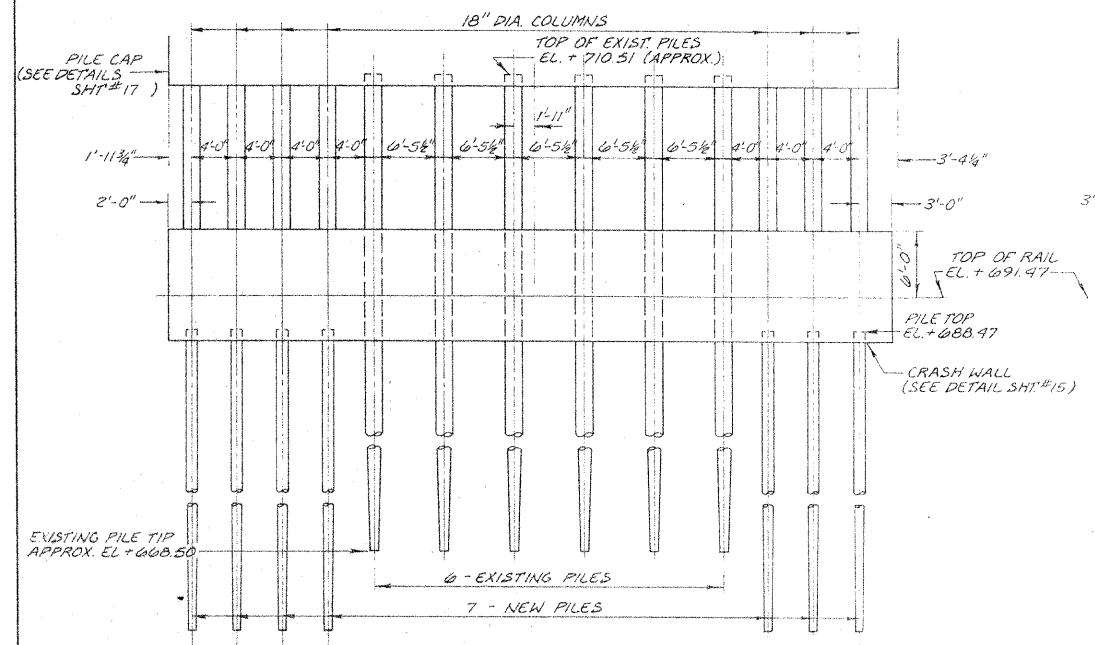
POINT  
(APPLIES ONLY TO STEP-TAPER TYPE PILE)



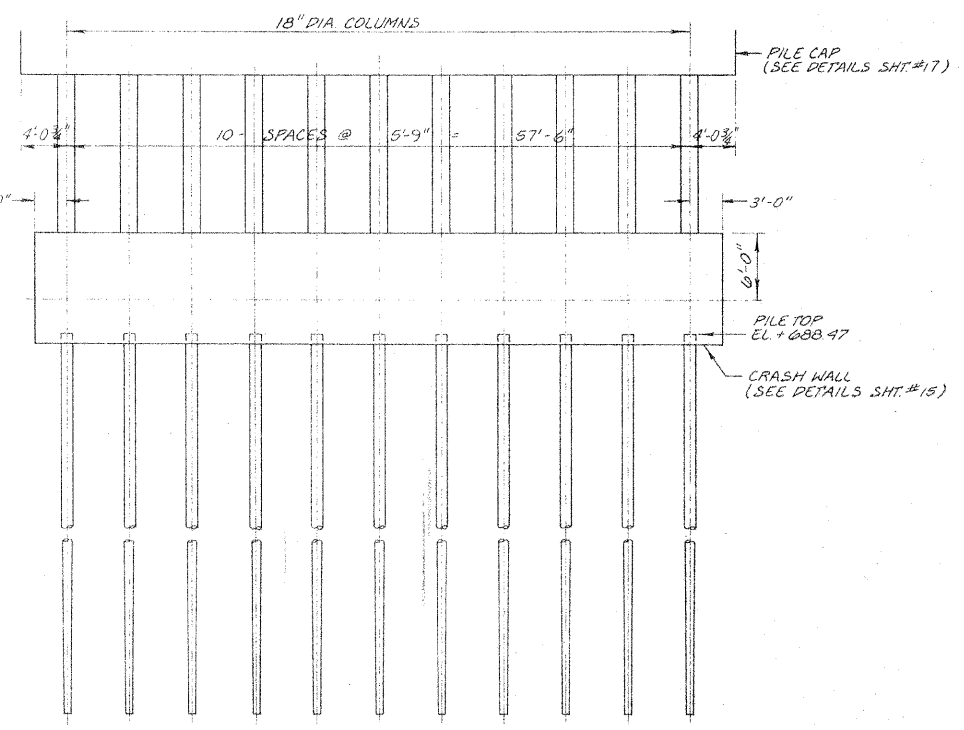
BAR S

**DETAIL OF MANDREL DRIVEN STRAIGHT OR STEP-TAPER PILES**

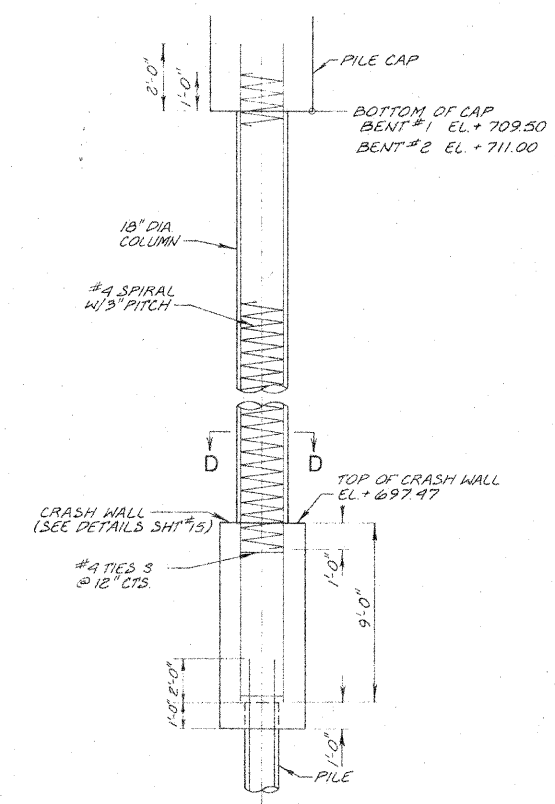
NOTE: See Sheet No. 16A for additional pile details.



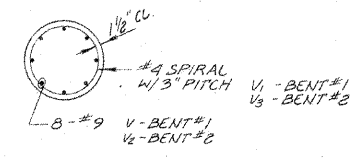
**BENT #1**  
(LOOKING NORTH)



**BENT #2**  
(LOOKING NORTH)



**COLUMN DETAIL**



**SECTION D-D**

REVISIONS	
NAME	DATE
D.C.N.	1-30-78
Added	7-21-11

**ILLINOIS DIVISION OF HIGHWAYS**  
**PILE DETAILS**  
**ARDMORE AVENUE BRIDGE**

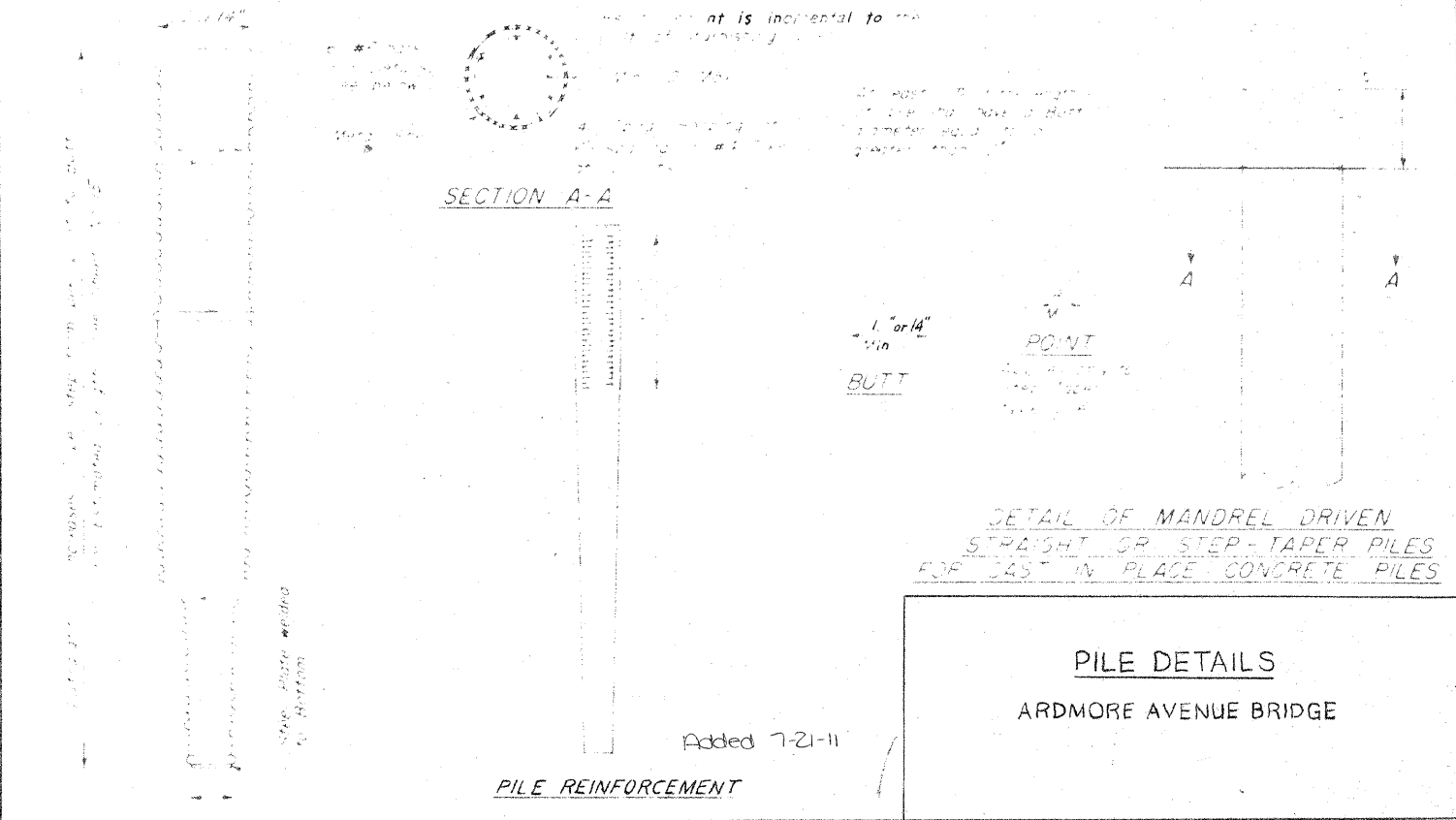
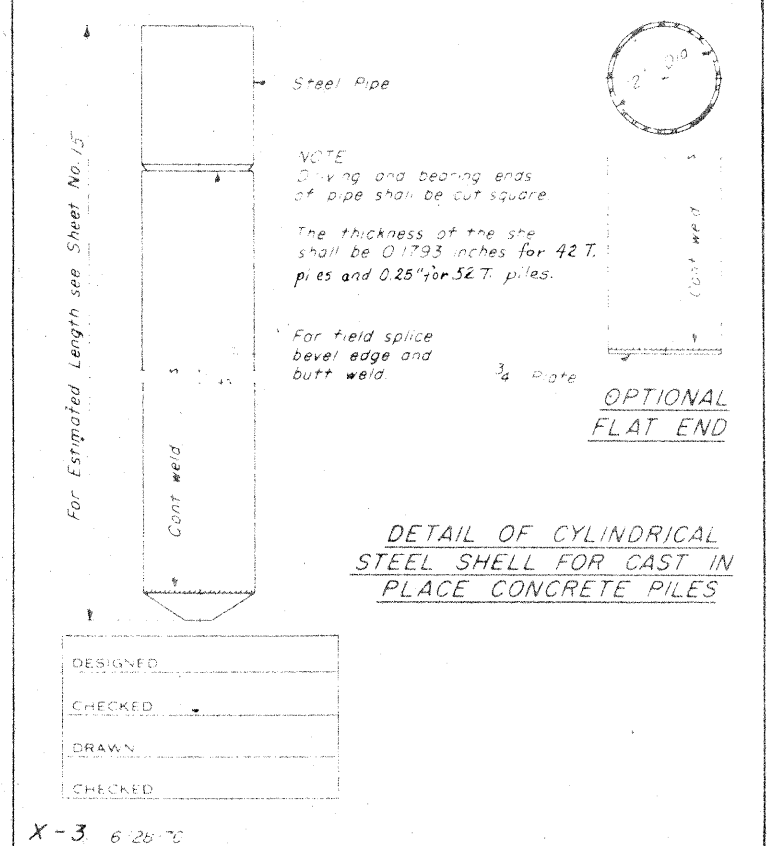
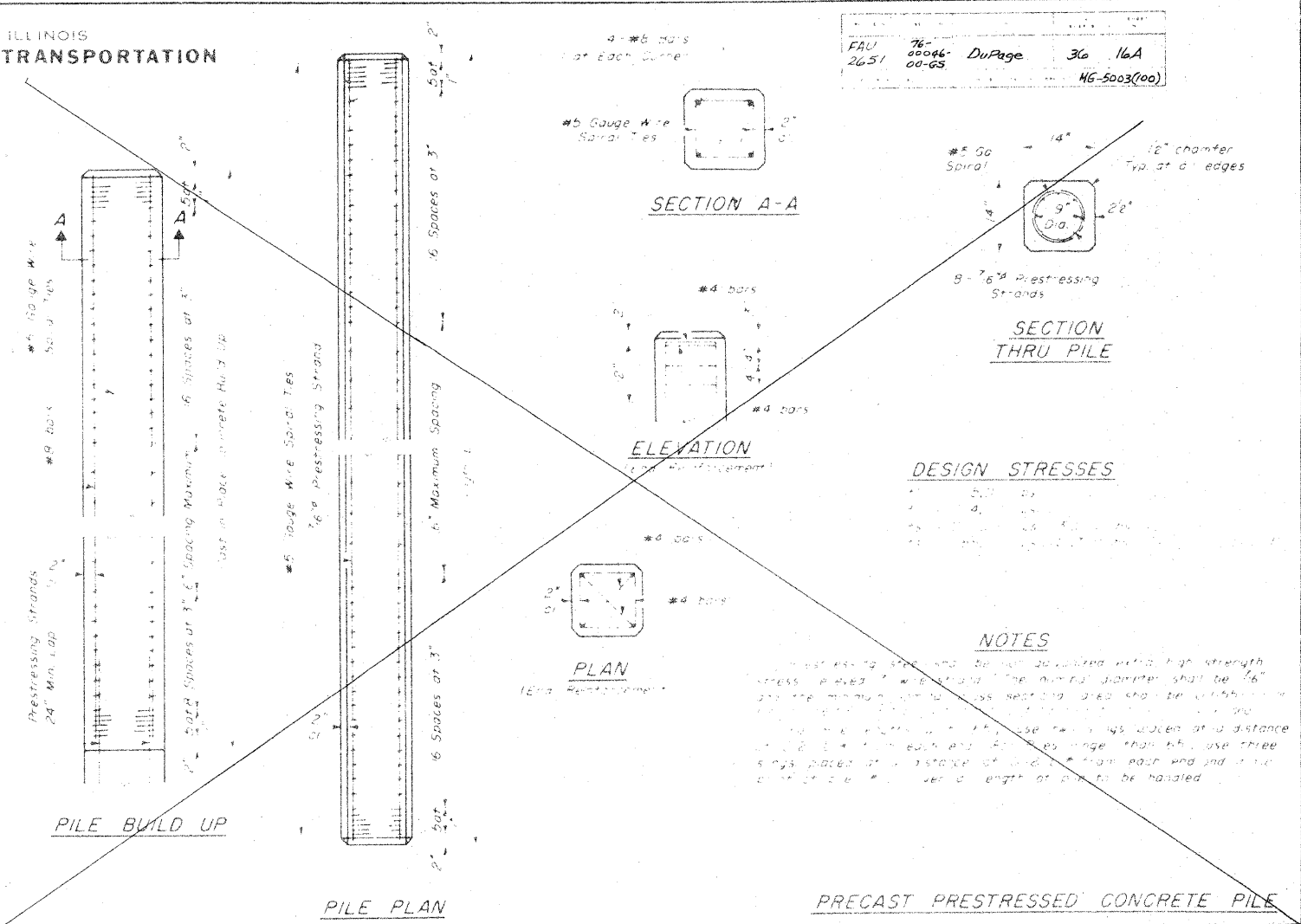
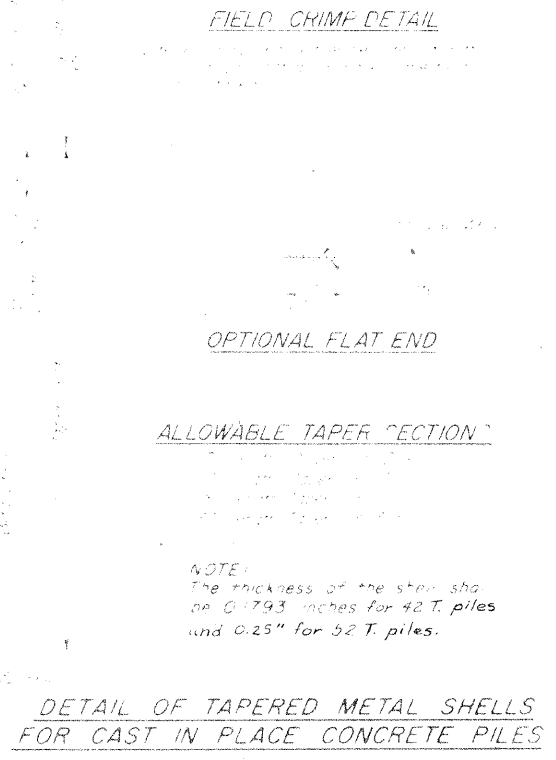
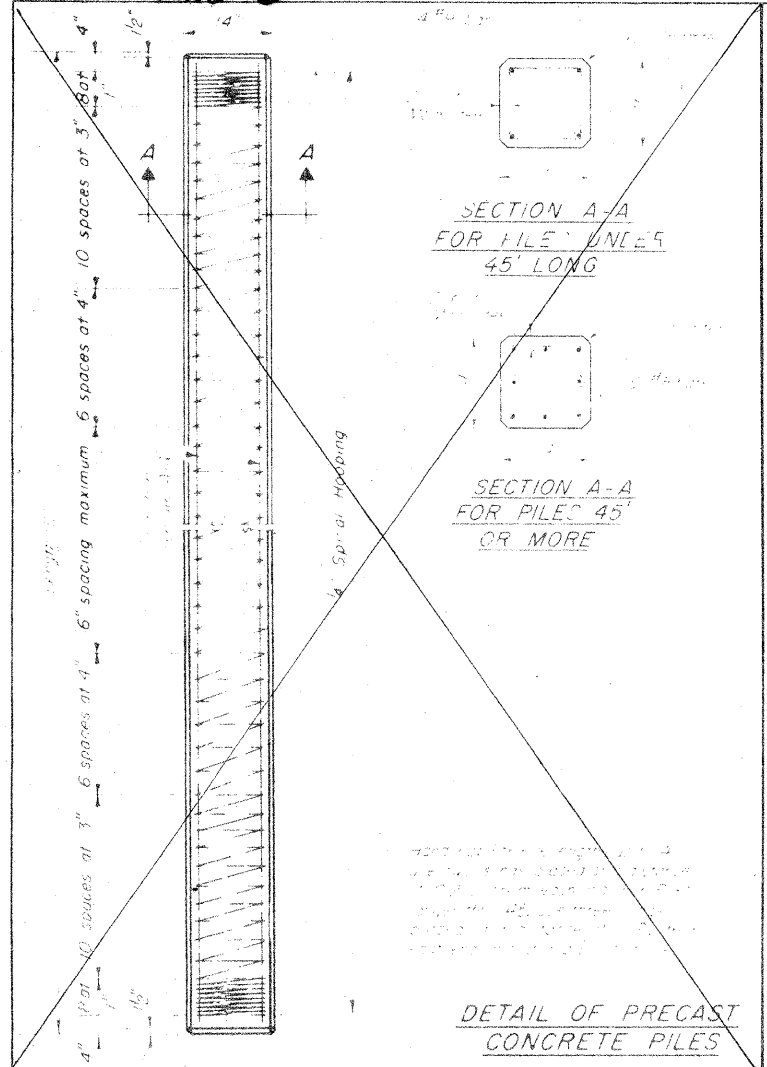
SCALE: NONE  
DATE: 12-28-77  
DRAWN BY: D.C.N.  
CHECKED BY: B.A.S.

02115-16

0015-16

STATE OF ILLINOIS  
DEPARTMENT OF TRANSPORTATION

FAU 78-0046-00-65 DuPage 36 16A  
2651 46-5003(100)



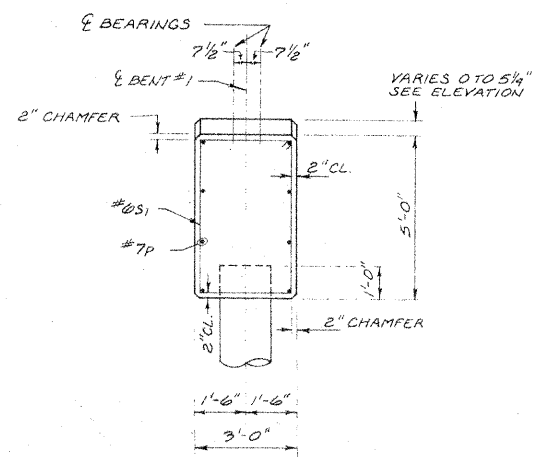
DESIGNED	
CHECKED	
DRAWN	
CHECKED	

X-3 6 26 70

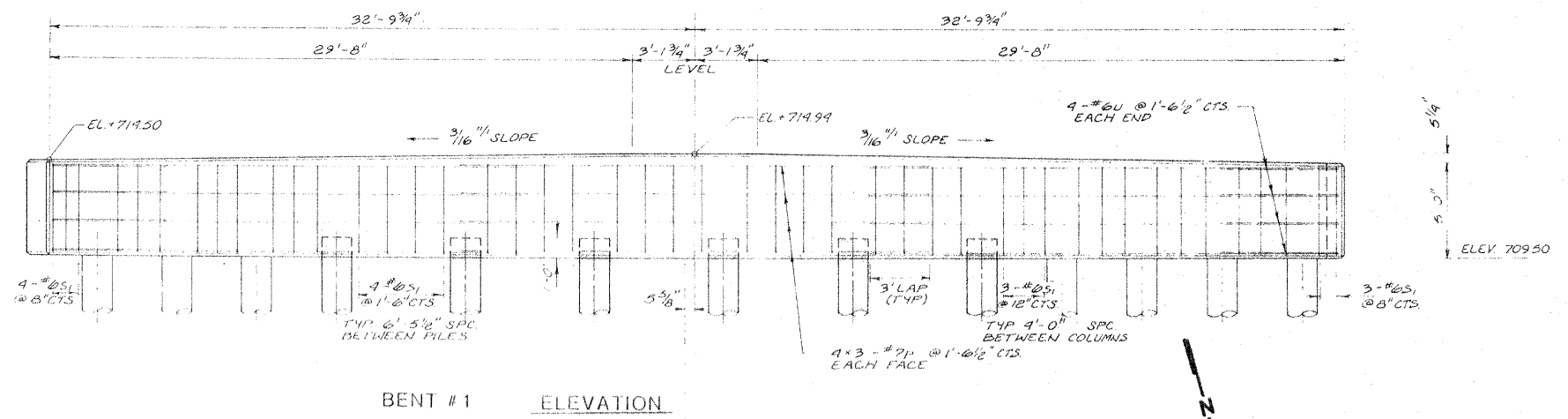
0015-16

0015-17

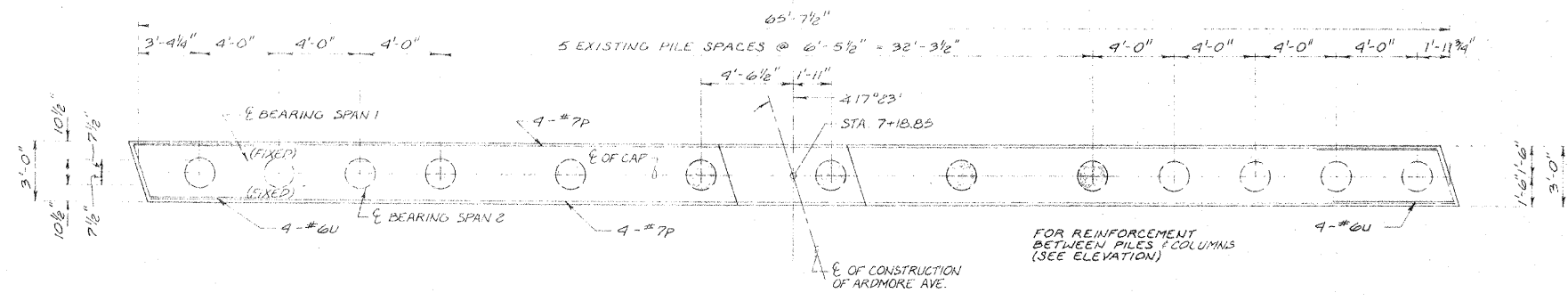
RTE	SECTION	COUNTY	TOTAL SHEETS	SHEET NO.
FAU 76-00046-2631	100-65	DUPAGE	36	17
STA.	TO STA.			
FED. ROAD DIST. NO.	ILLINOIS	FED. AID PROJECT MG-5002(100)		



SECTION A-A



BENT #1 ELEVATION



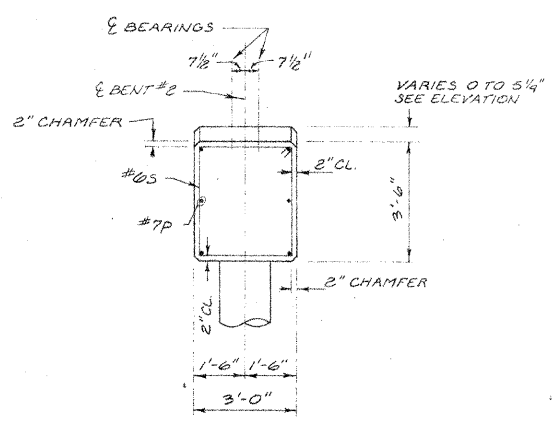
PLAN

**BENT #1 & #2 PILE CAPS  
BILL OF MATERIAL**

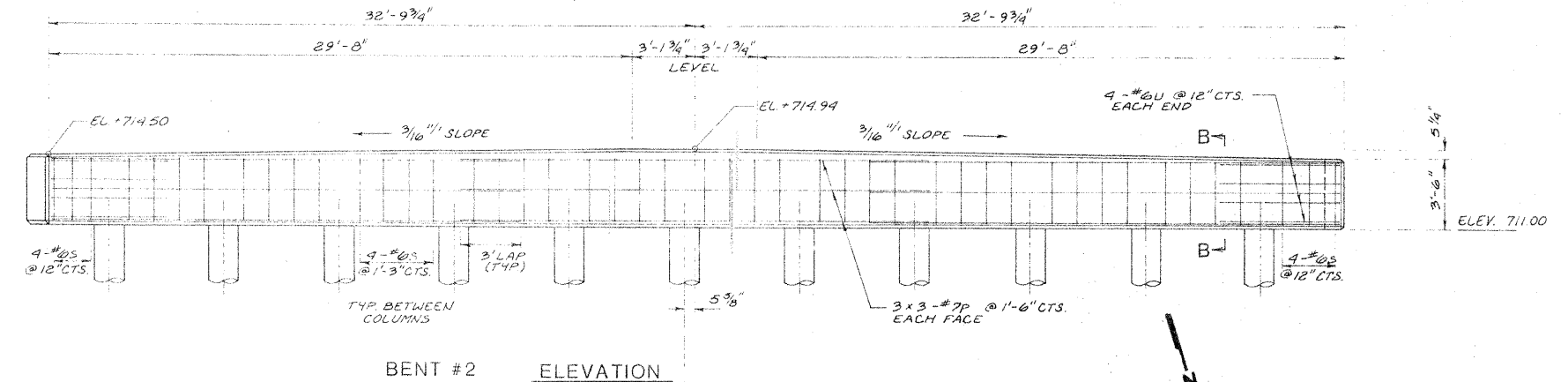
BAR	NO.	SIZE	LENGTH	SHAPE
P	42	#7	23'-9"	
U	16	#6	14'-8"	
S	48	#6	12'-9"	
S <sub>1</sub>	48	#6	15'-9"	
CLASS X CONCRETE REINFORCEMENT BARS			CU. YDS.	0.5
			POUNDS	4,111

**BENT PILE DATA**

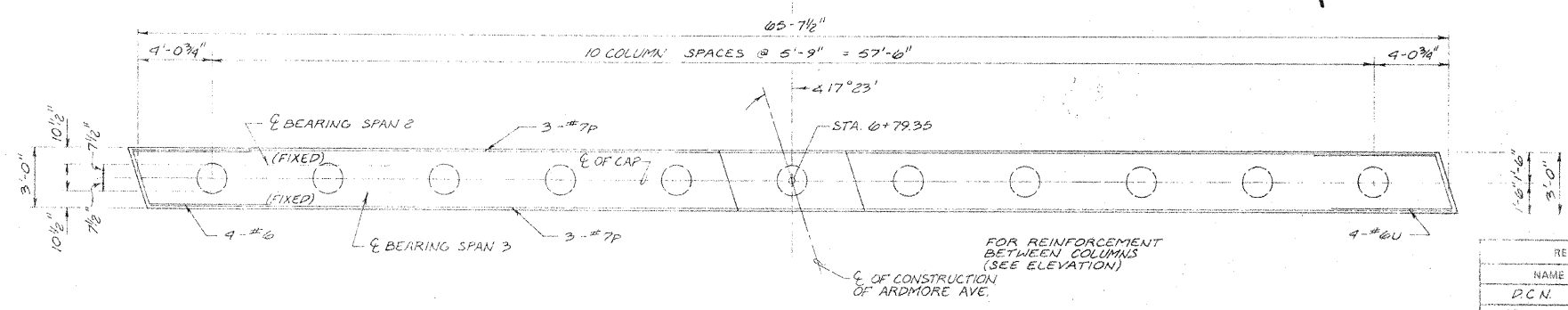
	BENT #1	BENT #2
TYPE:	12" METAL SHELL	14" METAL SHELL
CAPACITY:	44 TON MIN.	51 TON MIN.
EST. LENGTH:	77 FEET	77 FEET
NO. REQUIRED:	7 NEW (INCLUDES 1 TEST PILE AT BENT #1)	11 (INCLUDES 1 TEST PILE AT BENT #2)



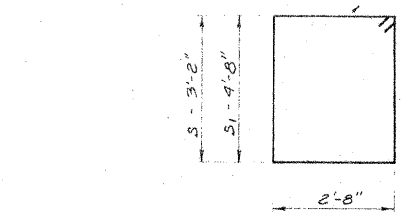
SECTION B-B



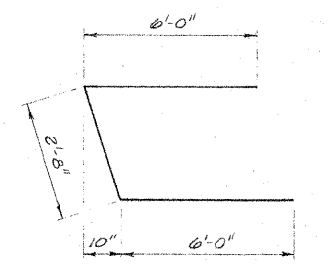
BENT #2 ELEVATION



PLAN



BAR S & S1



BAR U

REVISIONS

NAME	DATE
P.C.N.	1-30-78
Added	7-21-11

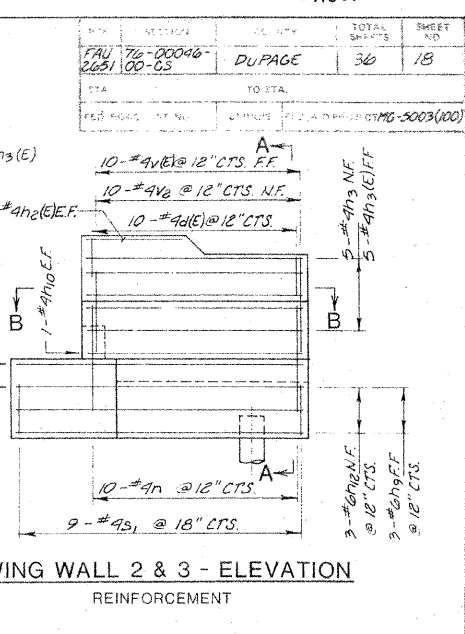
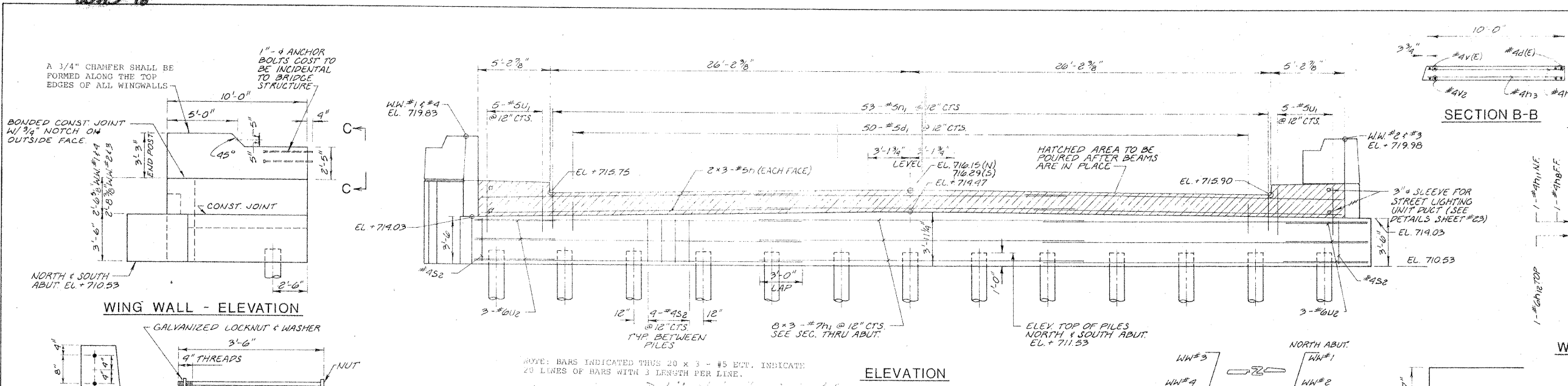
ILLINOIS DIVISION OF HIGHWAYS  
**PILE CAP PLANS & DETAILS**  
ARDMORE AVENUE BRIDGE

SCALE: AS SHOWN  
DATE: 12-28-77  
DRAWN BY: D.C.N.  
CHECKED BY: G.A.S.

0015-17

0015-18

PROJECT	SECTION	SHEET NO.	TOTAL SHEETS
FAU 76-00046-2251	100-05	DU PAGE	36
DATE	TO STA.	ILLINOIS DIVISION OF HIGHWAYS	
FILE NO.	DATE	100-2003(100)	

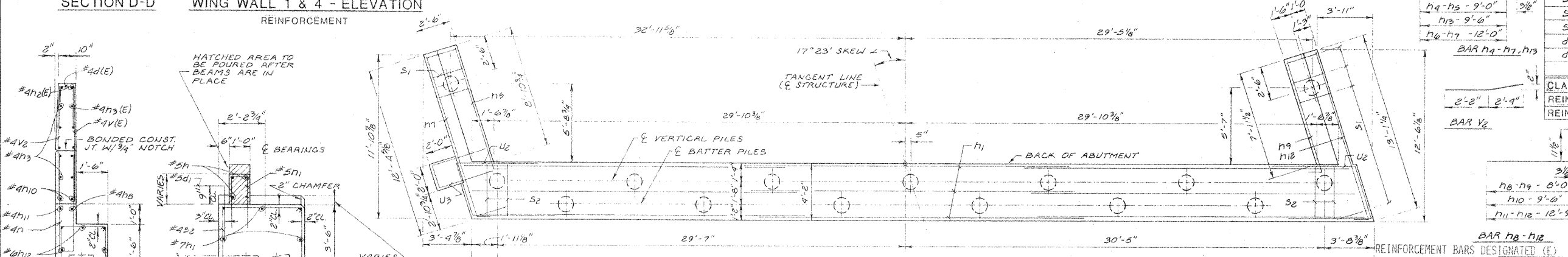
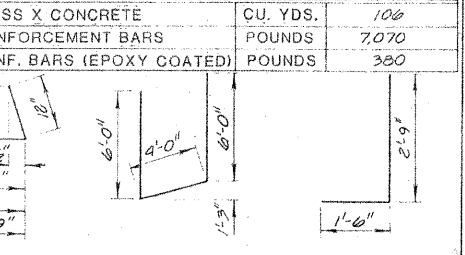
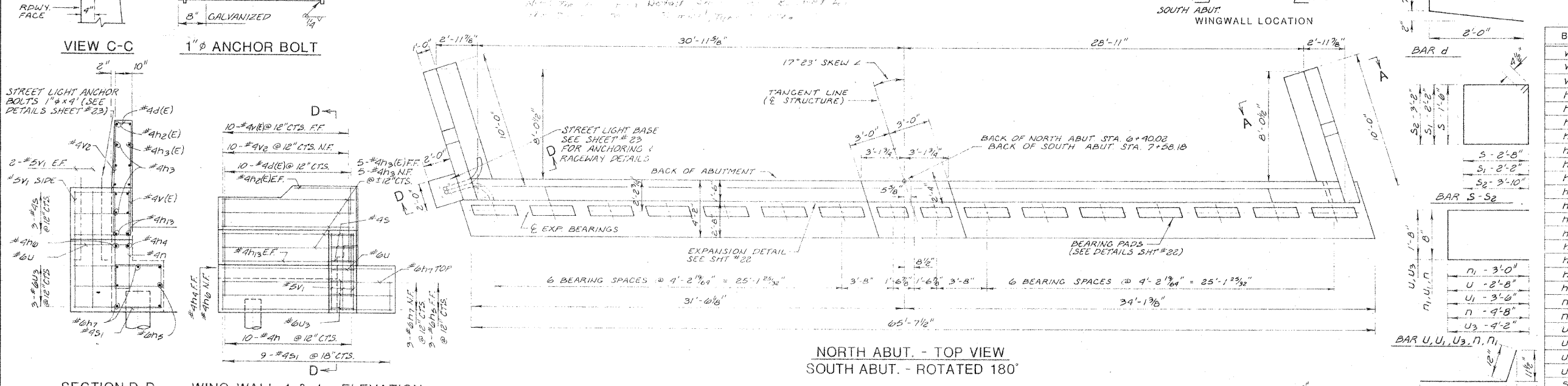


**BILL OF MATERIAL NORTH & SOUTH ABUTMENTS**

BAR NO.	SIZE	LENGTH	SHAPE
v(E)	#4	4'-0"	
v1	#5	5'-9"	
v2	#4	4'-6"	
h1	#7	23'-9"	
h2(E)	#4	4'-5"	
h3	#4	10'-0"	
h4	#4	10'-0"	
h5	#6	10'-0"	
h6	#4	13'-0"	
h7	#6	13'-0"	
h8	#4	9'-6"	
h9	#6	9'-6"	
h10	#4	10'-0"	
h11	#4	13'-9"	
h12	#6	13'-9"	
h13	#4	10'-6"	
h3(E)	#4	9'-8"	
u1	#4	10'-0"	
u	#5	6'-8"	
u2	#6	7'-0"	
u3	#5	7'-8"	
u1	#5	7'-8"	
u2	#6	10'-0"	
u3	#6	10'-0"	
s	#4	9'-1"	
s1	#4	9'-5"	
s2	#4	14'-9"	
d1	#5	4'-3"	
d(E)	#4	4'-8"	

CLASS X CONCRETE	CU. YDS.	106
REINFORCEMENT BARS	POUNDS	7,070
REINF. BARS (EPOXY COATED)	POUNDS	380



**NORTH ABUTMENT PILE DATA**

WINGWALL	ABUTMENT STRAIGHT	BATTER
TYPE	14" MTL. SHL.	14" MTL. SHL.
CAPACITY	52 TON MIN.	52 TON MIN.
EST. LENGTH	60 FT.	60 FT.
NO. REQUIRED	7 *	6

**NORTH ABUT. PLAN - PILE CAP SOUTH ABUT. - ROTATED 180°**

WINGWALL	ABUTMENT STRAIGHT	BATTER
TYPE	14" MTL. SHL.	14" MTL. SHL.
CAPACITY	52 TON MIN.	52 TON MIN.
EST. LENGTH	50 FT.	50 FT.
NO. REQUIRED	2	7

**SOUTH ABUTMENT PILE DATA**

WINGWALL	ABUTMENT STRAIGHT	BATTER
TYPE	14" MTL. SHL.	14" MTL. SHL.
CAPACITY	52 TON MIN.	52 TON MIN.
EST. LENGTH	50 FT.	50 FT.
NO. REQUIRED	2	6

\* INCLUDES 1 TEST PILE AT N. ABUTMENT

REINFORCEMENT BARS DESIGNATED (E) SHALL BE EPOXY COATED SEE SPECIAL PROVISIONS

**ABUTMENT PLANS & DETAILS**

ARDMORE AVENUE BRIDGE

SCALE: AS SHOWN  
DATE: 12-28-77

REVISIONS

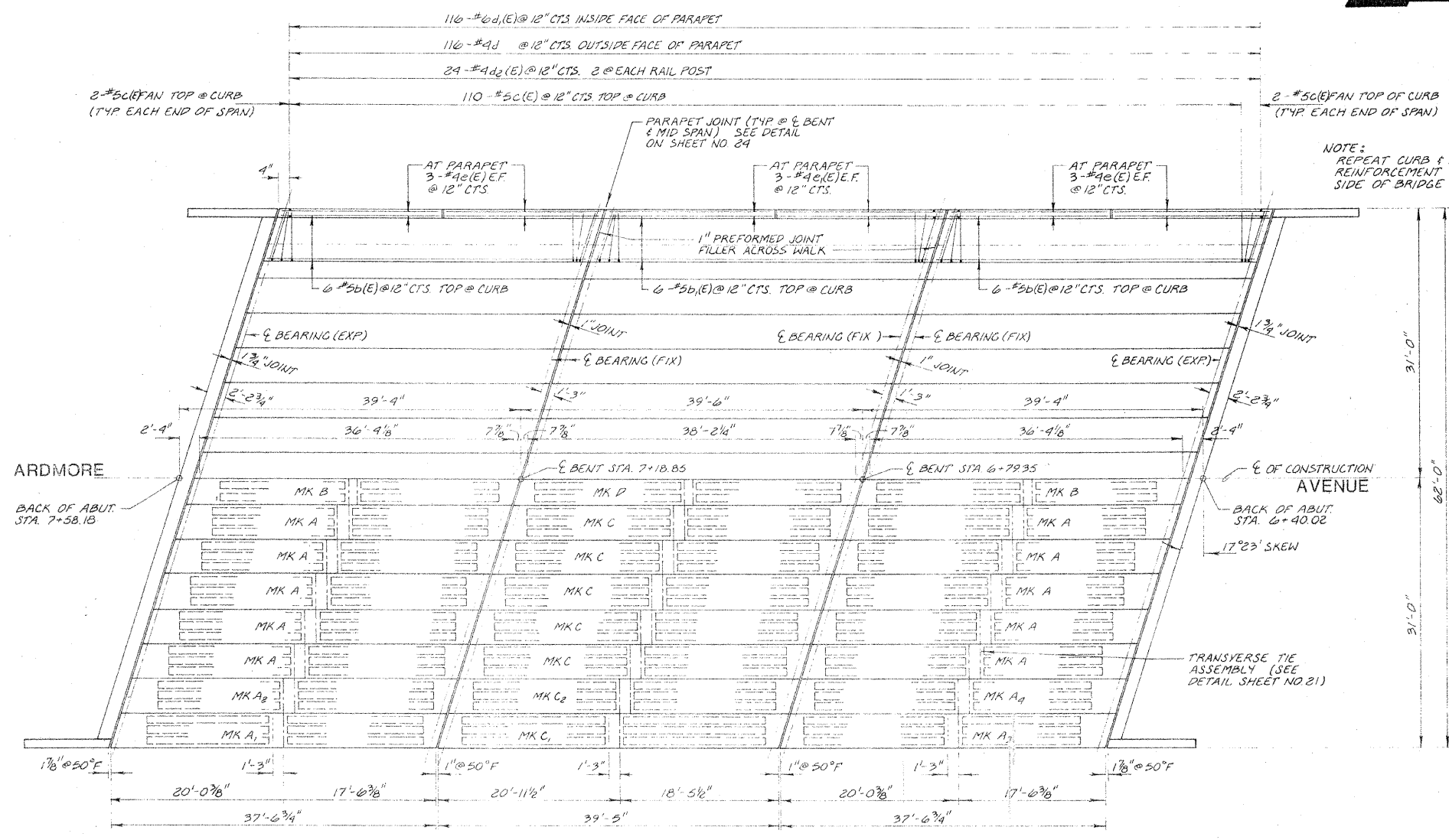
NAME	DATE
D.C.N.	1-30-70
AS BUILT D.C.N.	10-4-80
Added	7-21-11

DRAWN BY: D.C.N.  
CHECKED BY: G.A.S.

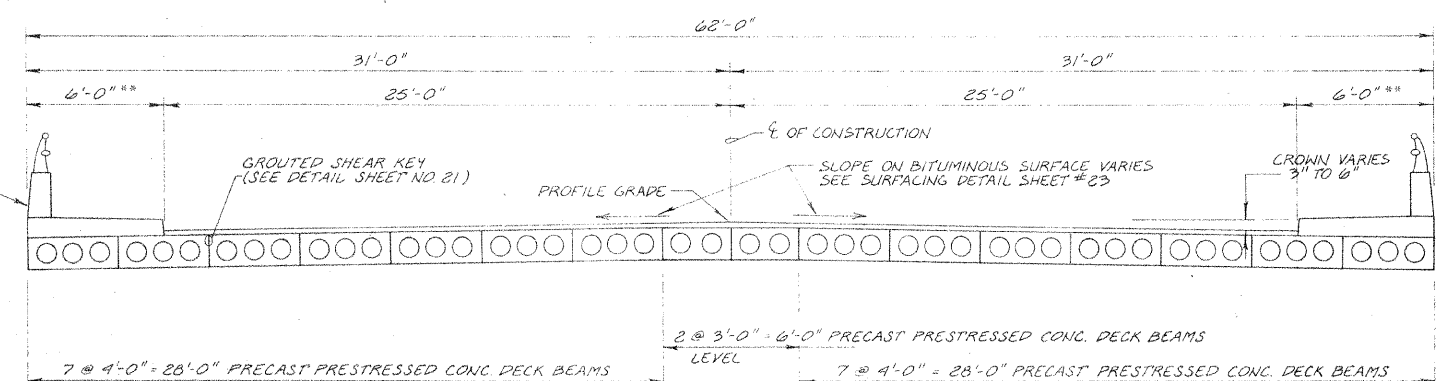
0015-18

0015-19

RILEY	SECTION	COUNTY	TOTAL SHEETS	SHEET NO.
PAV 2051	76-00076-00-65	DUPAGE	36	19



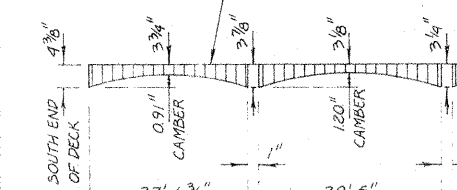
DECK FRAMING PLAN



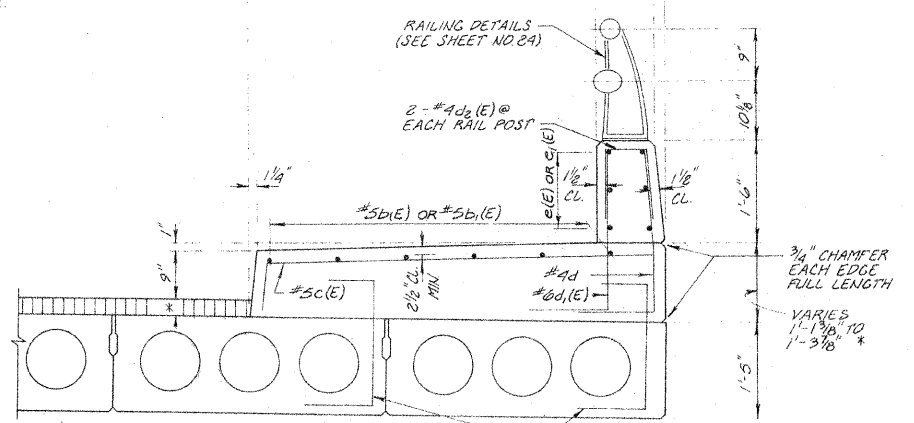
CROSS SECTION  
(PERPENDICULAR TO 1/2 CONSTRUCTION)

NOTE:  
DECK TO HAVE \* CLASS I BIT. CONC. WEARING SURFACE INCLUDING THICKNESS OF WATERPROOF MEMBRANE SYSTEM.

BITUMINOUS SURFACING, CLASS I, MIX D AND WATERPROOF MEMBRANE SYSTEM



CLASS I PROFILE AT 1/2 CONSTRUCTION

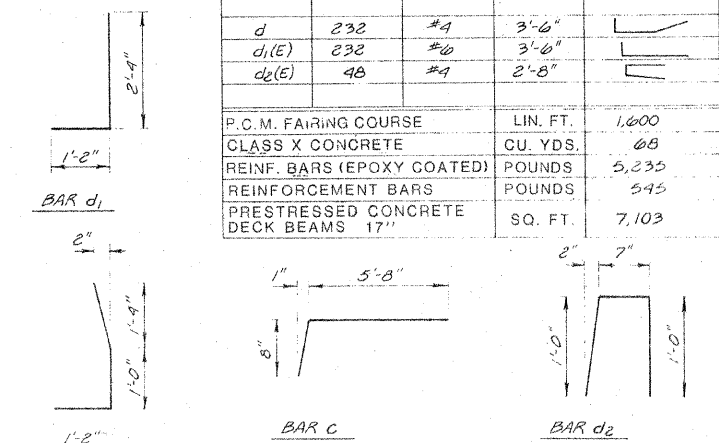


CURB SECTION

**BILL OF MATERIAL**

BAR	NO.	SIZE	LENGTH	SHAPE
b(E)	29	#5	37'-2"	
b1(E)	12	#5	39'-0"	
c(E)	48	#4	18'-4"	
c1(E)	24	#4	19'-4"	
c(E)	244	#5	6'-4"	
d	232	#4	3'-6"	
d1(E)	232	#6	3'-6"	
d2(E)	48	#4	2'-8"	

P.C.M. FAIRING COURSE	LIN. FT.	1,600
CLASS X CONCRETE	CU. YDS.	68
REINF. BARS (EPOXY COATED)	POUNDS	5,235
REINFORCEMENT BARS	POUNDS	545
PRESTRESSED CONCRETE DECK BEAMS 17"	SQ. FT.	7,103



REINFORCEMENT BARS DESIGNATED (E) SHALL BE EPOXY COATED SEE SPECIAL PROVISIONS

REVISIONS

NAME	DATE
D.C.N.	1-30-78
added	7-21-11

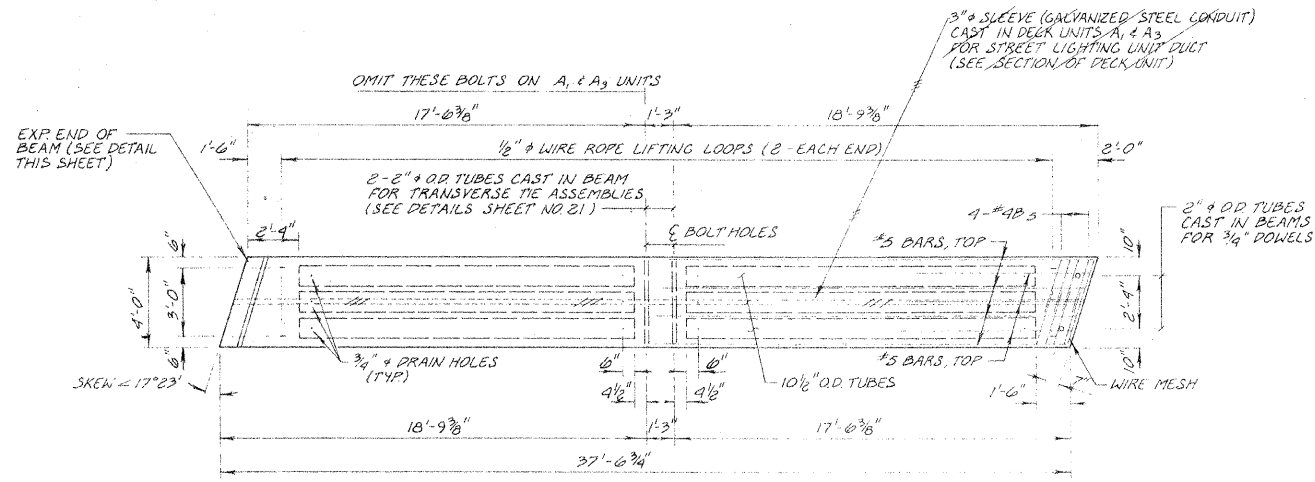
**DECK FRAMING PLAN & DETAILS**

ARDMORE AVENUE BRIDGE  
SCALE: AS SHOWN  
DRAWN BY: D.C.N.  
DATE: 12-28-77  
CHECKED BY: G.A.B.

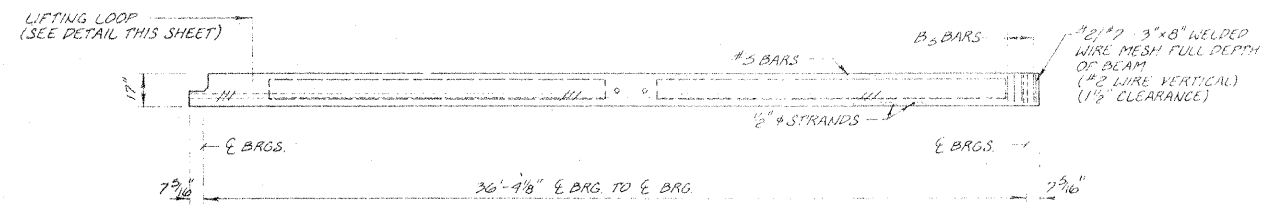
0015-19



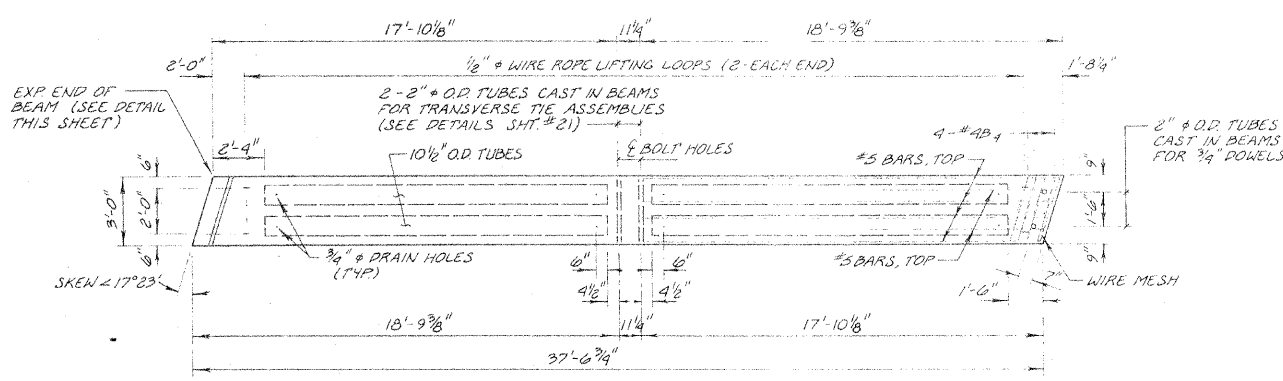
ROUTE	SECTION	COUNTY	TOTAL SHEETS	SHEET NO.
FAU 76-00046-2251	00-65	DUPAGE	36	20
STA.	TO STA.			
FED. ROAD DIST. NO.	ILLINOIS	FED. AID PROJECT	M6-5009U000	



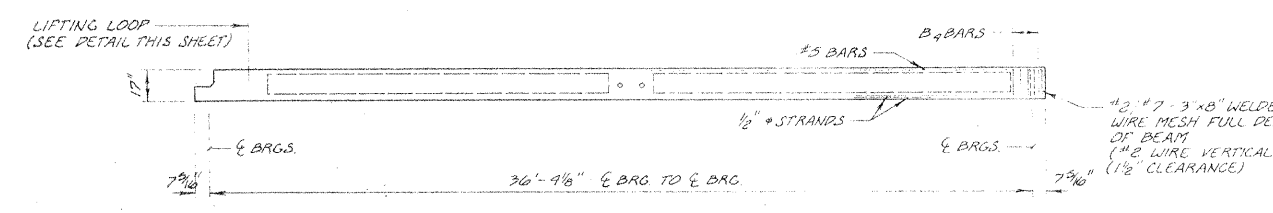
PLAN OF (A) DECK UNITS



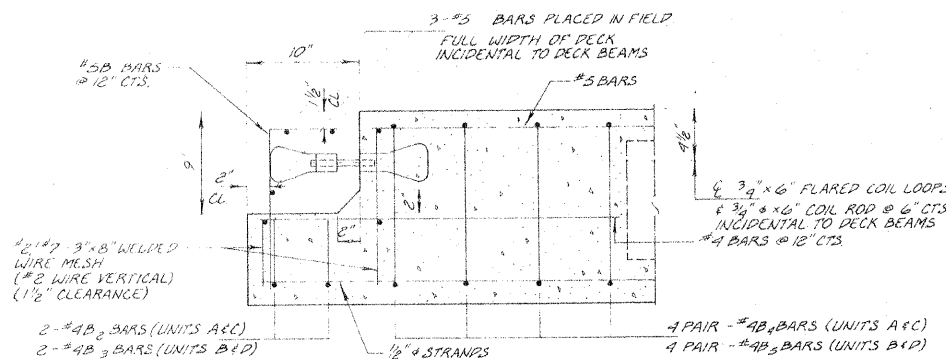
ELEVATION



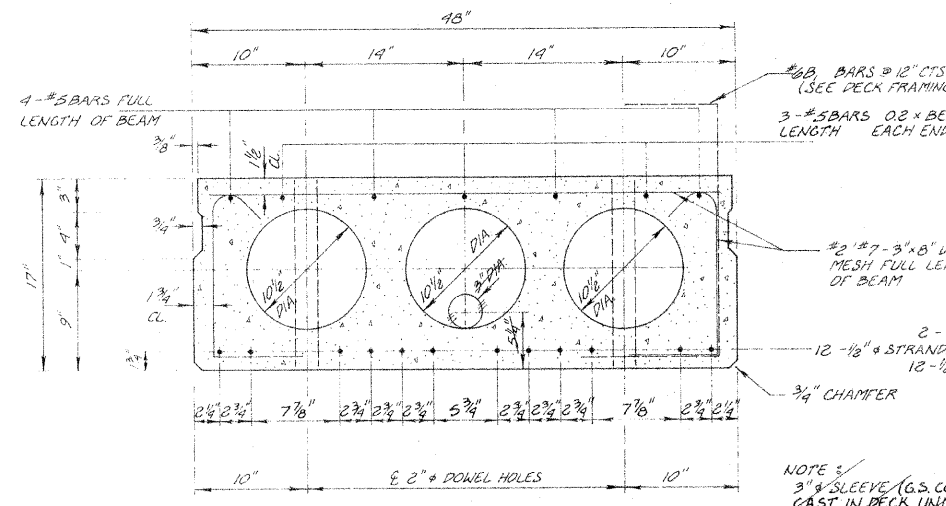
PLAN OF (B) DECK UNITS



ELEVATION



EXPANSION END OF BEAM

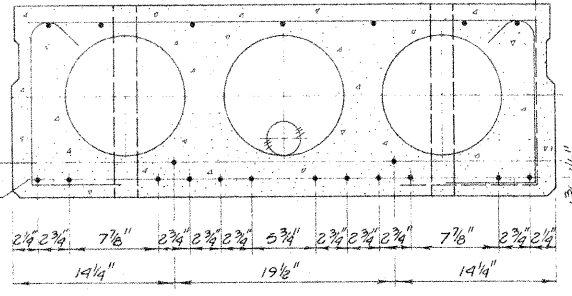


SECTION OF (A) DECK UNITS

SPANS 1 & 3  
12-1/2" DIA. STRANDS, EACH STRAND STRESSED TO 28,900 PSI  
12 STRANDS - 1 3/4" UP.  
F'ci = 4300 psi.

REVISIONS	
NAME	DATE
D.C.N.	1-30-78
AS BUILT D.C.N.	10-9-80
Added	7-21-11

NOTE:  
DECK UNITS 'C' HAVE THE IDENTICAL CROSS SECTION AS DECK UNITS 'A' EXCEPT FOR ADDITIONAL 1/2" DIA. STRANDS AS SHOWN BELOW



SECTION OF (C) DECK UNITS

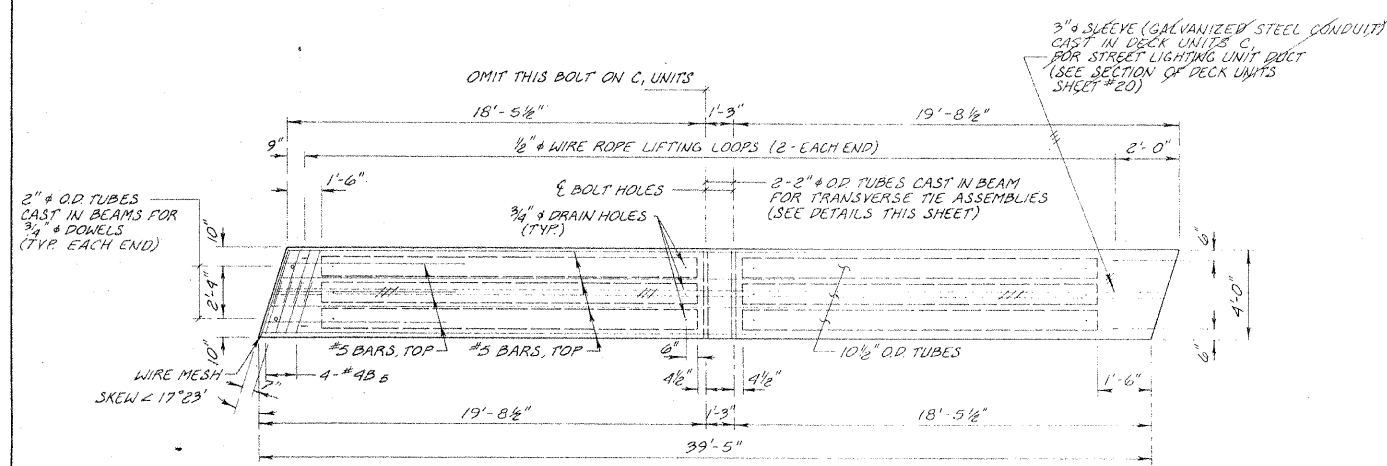
SPAN 2  
14-1/2" DIA. STRANDS, EACH STRAND STRESSED TO 28,900 PSI.  
12 STRANDS - 1 3/4" UP; 2 STRANDS 3 1/4" UP.  
F'ci = 4900

ILLINOIS DIVISION OF HIGHWAYS  
**DECK BEAMS (A&B) & DETAILS**  
ARDMORE AVENUE BRIDGE

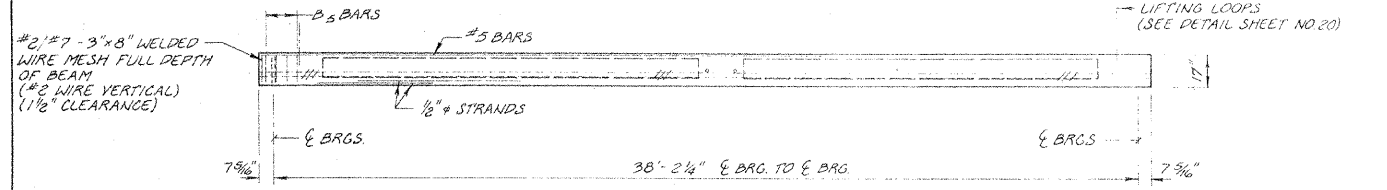
SCALE: AS SHOWN  
DRAWN BY: D.C.N.  
DATE: 12-28-77  
CHECKED BY: G.A.S.

90115-21

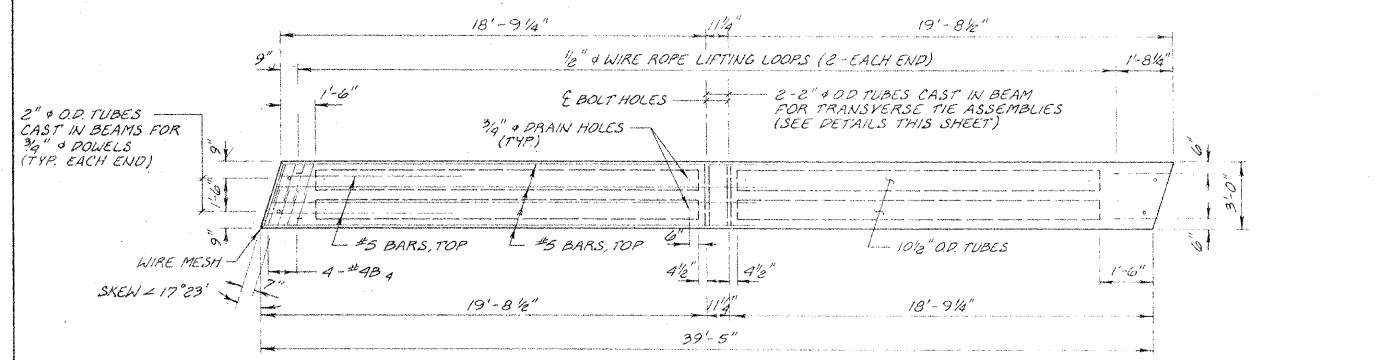
DATE	SECTION	COUNTY	TOTAL SHEETS	SHEET NO.
FAY 76-00046-2691	00-53	DUPAGE	36	21
STA		TO STA.		
FED. ROAD DIST. NO.	ILLINOIS	FED. AID PROJECT M6-5003(00)		



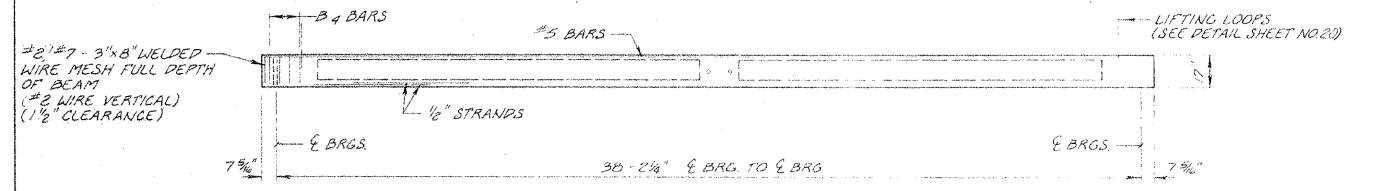
PLAN OF (C) DECK UNITS



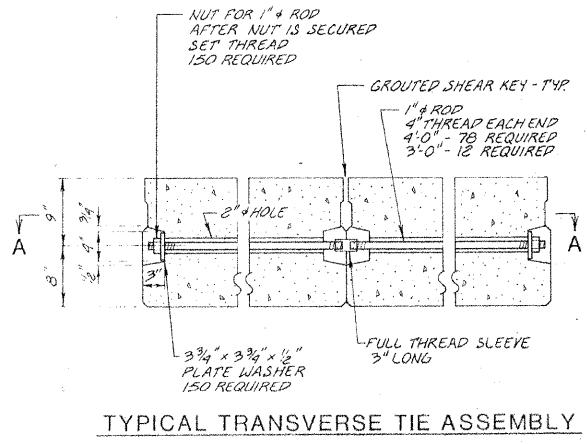
ELEVATION



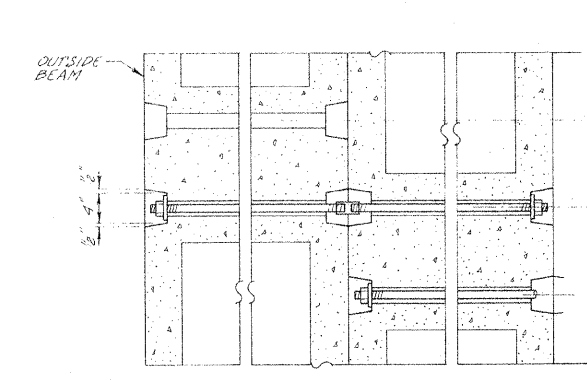
PLAN OF (D) DECK UNITS



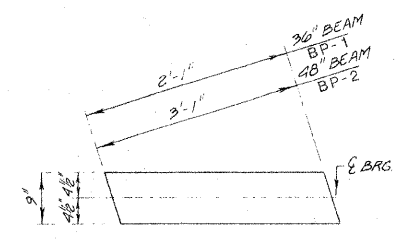
ELEVATION



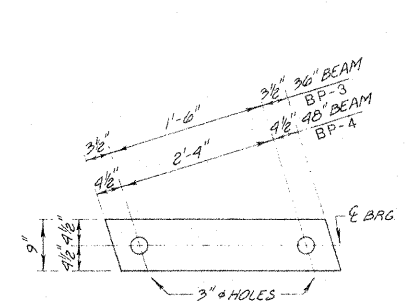
TYPICAL TRANSVERSE TIE ASSEMBLY



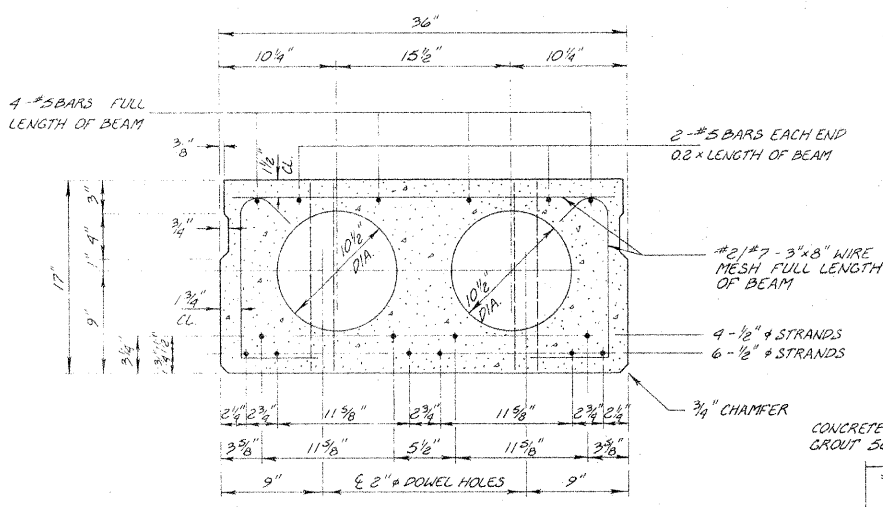
SECTION A-A



1/4" GRAPHITED ASBESTOS BRG. PAD (EXPANSION BEARINGS)



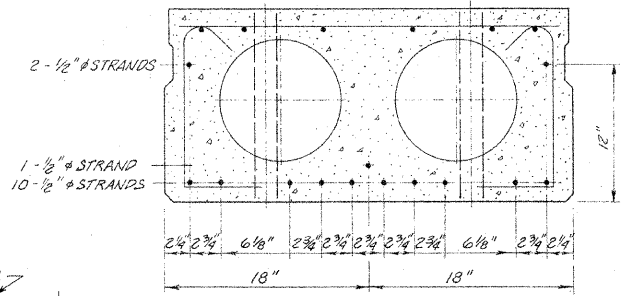
1/2" FABRIC BRG. PADS (FIXED BEARINGS)



SECTION OF (B) DECK UNITS

SPANS 1 & 3  
10-1/2" DIA. STRANDS; EACH STRAND STRESSED TO 28,900 PSI  
6 STRANDS - 1 3/4" UP; 4 STRANDS 3 1/4" UP.  
f'ci = 4000 psi.

NOTE  
DECK UNITS D HAVE THE IDENTICAL CROSS SECTION AS DECK UNITS B EXCEPT FOR ADDITIONAL 1/2" DIA. STRAND AS SHOWN BELOW



SECTION OF (D) DECK UNITS

SPAN 2  
13-1/2" DIA. STRANDS, EACH STRESSED TO 28,900 PSI  
10 STRANDS - 1 3/4" UP; 1 STRAND - 3 1/4" UP; 2 STRANDS - 12" UP  
f'ci = 4000 psi

SHEAR KEY DETAIL

REVISIONS	
NAME	DATE
D.C.N.	1-30-78
AS BUILT D.C.N.	10-9-80
Added	7-21-11

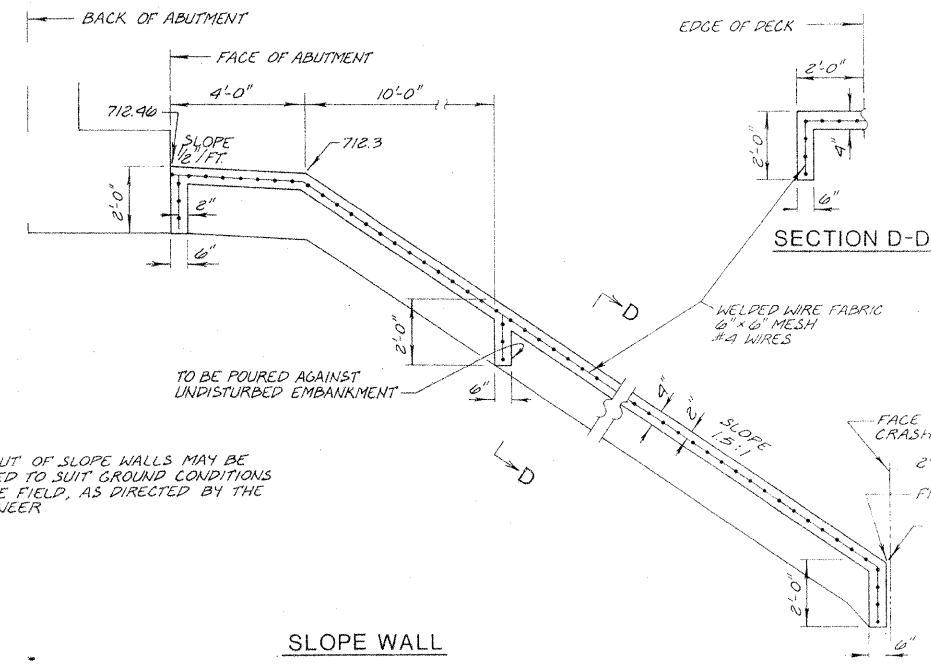
ILLINOIS DIVISION OF HIGHWAYS  
**DECK BEAMS (C&D) & DETAILS**  
ARDMORE AVENUE BRIDGE

SCALE: AS SHOWN    DRAWN BY: D.C.N.  
DATE: 12-28-77    CHECKED BY: G.A.S.

00115-21

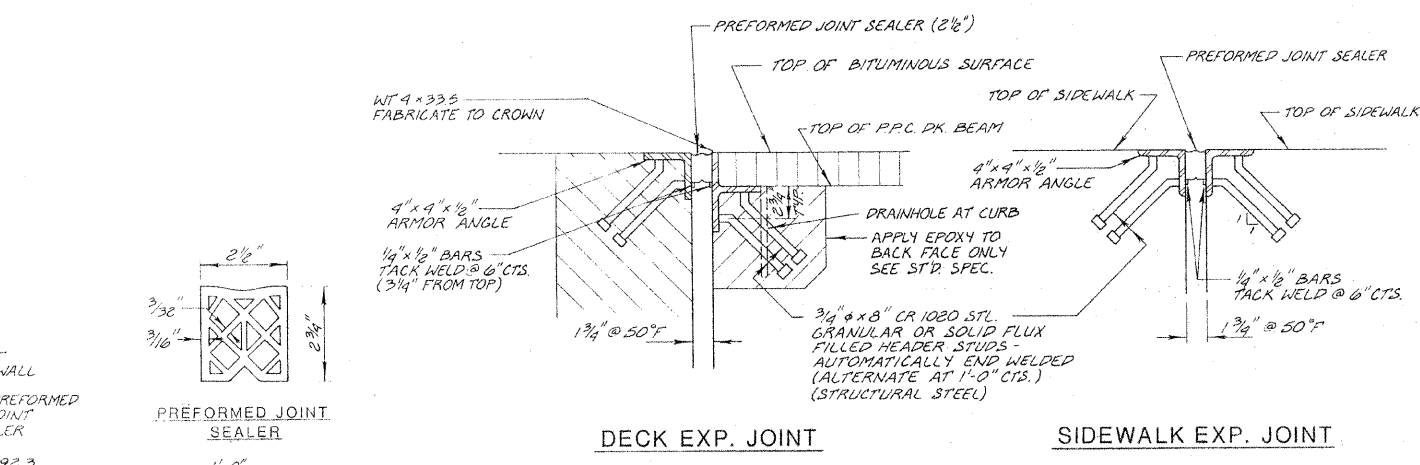
00115-22

RTE	SECTION	COUNTY	TOTAL SHEETS	SHEET NO.
PAU 2631	76-000916 00-65	DU PAGE	36	22
STA.		TO STA.		
FED. ROAD DIST. NO.		ILLINOIS FED. AID PROJECT MS-5003(100)		

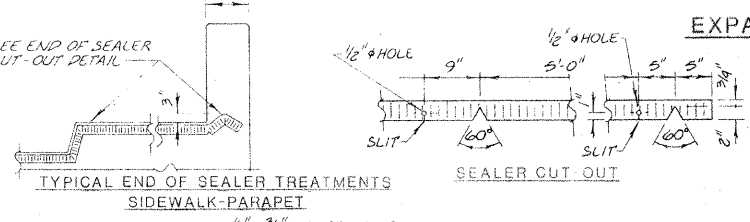


NOTE:  
LAYOUT OF SLOPE WALLS MAY BE VARIED TO SUIT GROUND CONDITIONS IN THE FIELD, AS DIRECTED BY THE ENGINEER

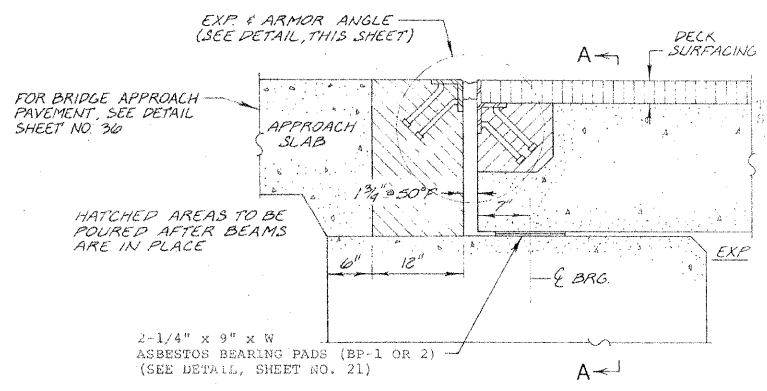
SLOPE WALL



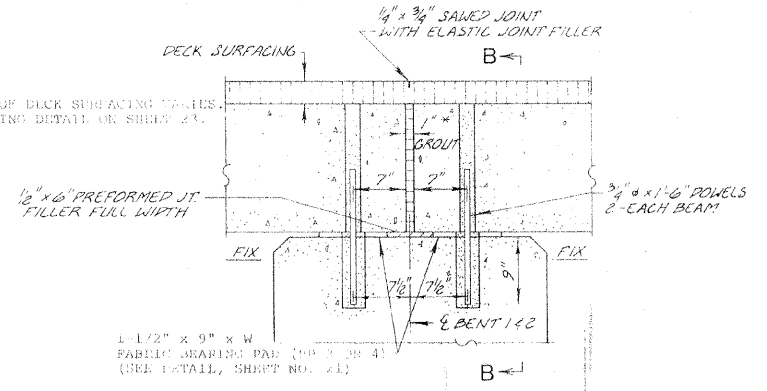
DECK EXP. JOINT SIDEWALK EXP. JOINT



EXPANSION AND ARMOR ANGLE DETAILS



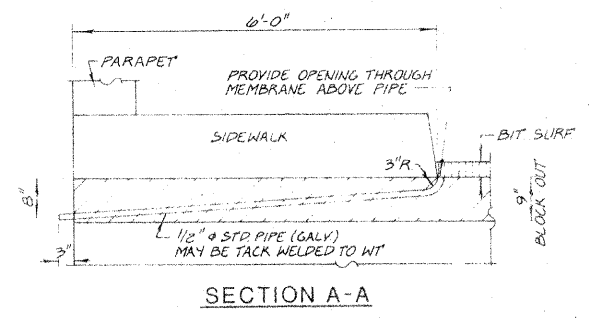
EXPANSION BRG. DETAIL (ABUTMENT)



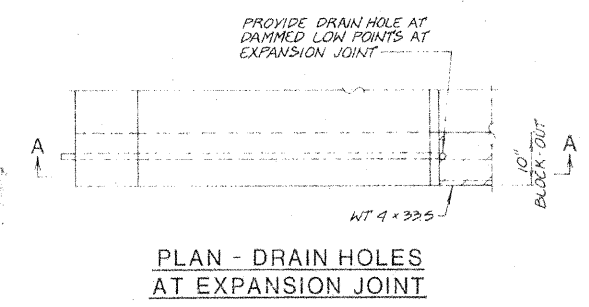
FIXED BRG. DETAIL (BENT #1 & #2)

Joint shall be packed with a very dry mix of 2:1 sand and 1:1 C. mortar.  
Dimension may vary plus or minus to accommodate tolerance in beam lengths.

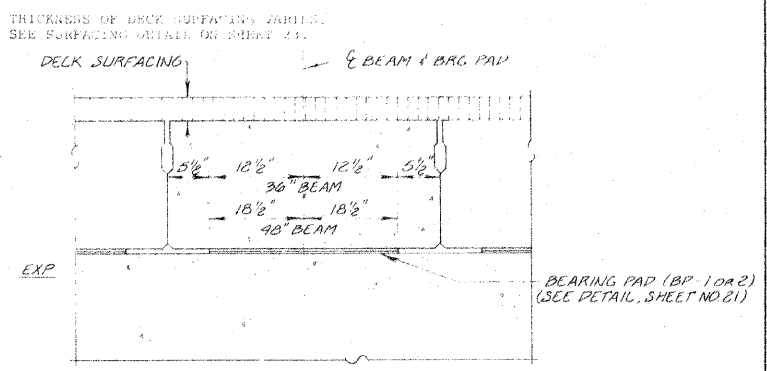
After beams have been erected, 1 1/4\"/>



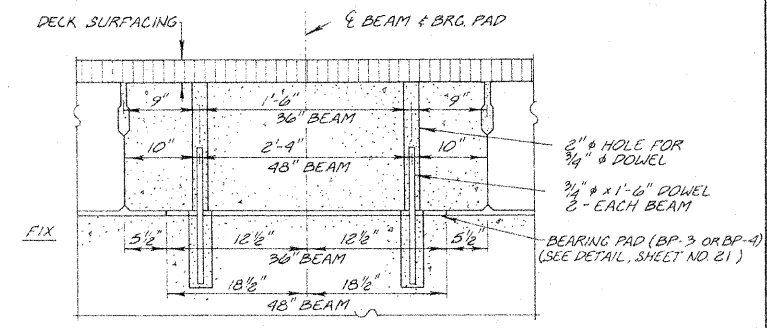
SECTION A-A



PLAN - DRAIN HOLES AT EXPANSION JOINT



SECTION A-A (EXP. END)



SECTION B-B (FIXED END)

BILL OF MATERIAL

ITEM	UNIT	QUANTITY
SLOPE WALL (4 INCH)	SQ. YDS.	600
PREFORMED JT. SEALER 2 1/2"	LIN. FT.	130

ILLINOIS DIVISION OF HIGHWAYS  
MISC. BRIDGE DETAILS (1)

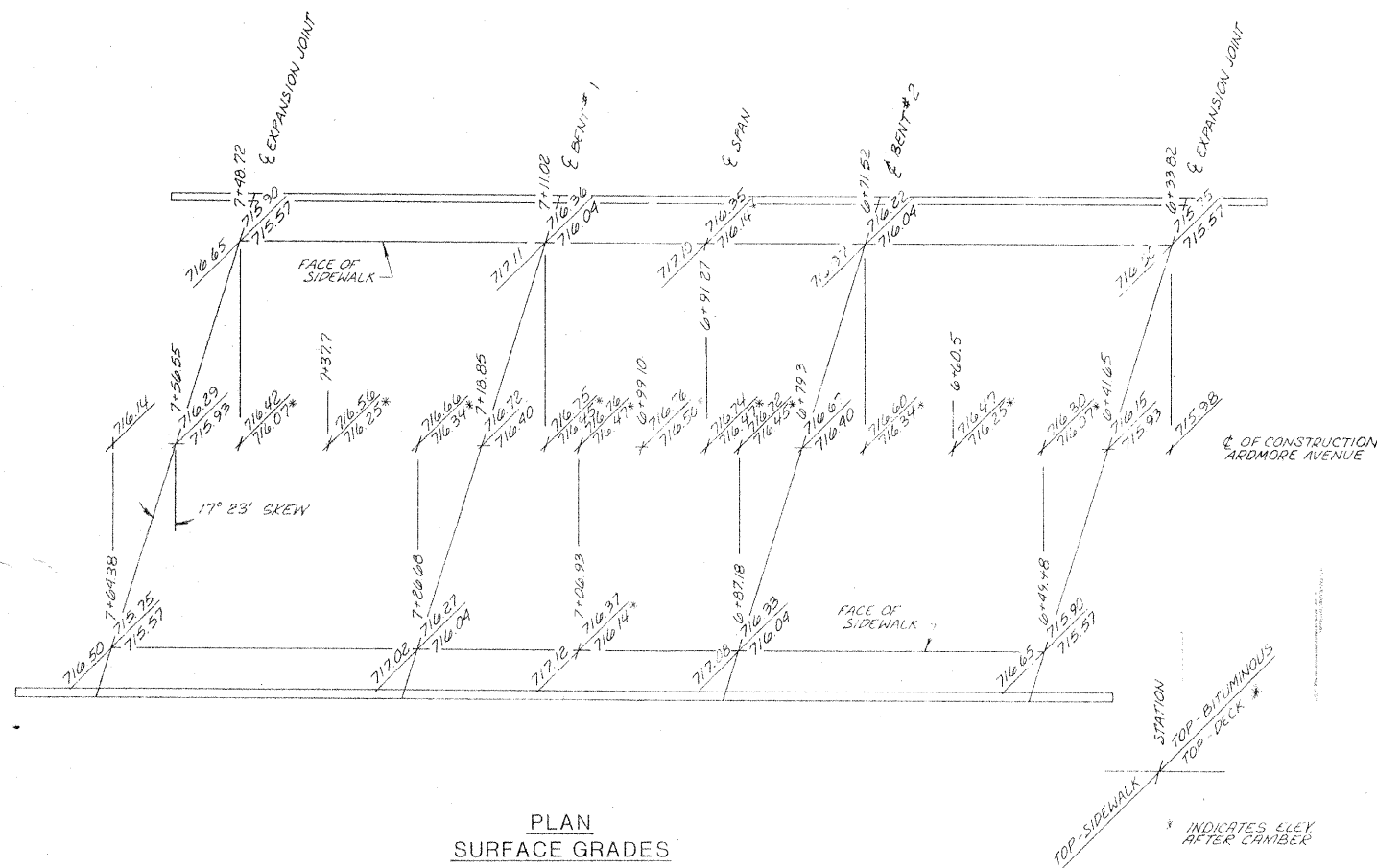
ARDMORE AVENUE BRIDGE

REVISIONS	
NAME	DATE
D.C.N.	1-30-78
Added	7-21-11

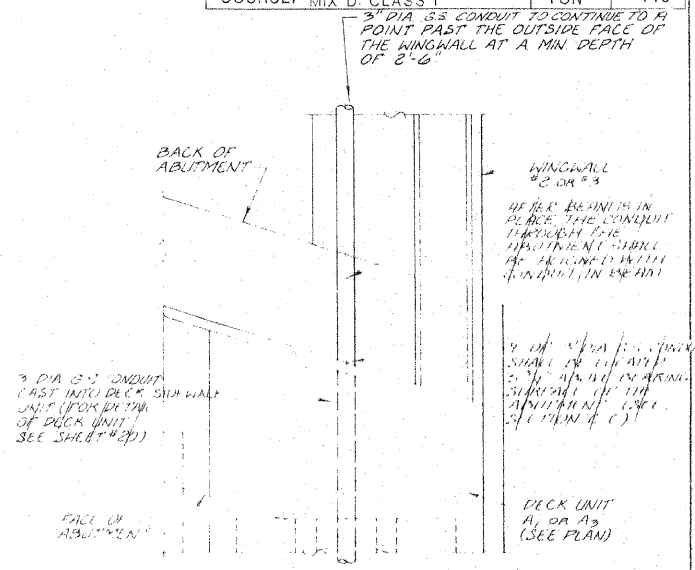
SCALE: AS SHOWN DRAWN BY: D.C.N.  
DATE: 12-28-77 CHECKED BY: G.A.S.

RTE	SECTION	COUNTY	TOTAL SHEETS	SHEET NO.
FAU 00-65	76-00046-00-65	DUPAGE	34	23
STA.		TO STA.		
FED. ROAD DIST. NO.		ILLINOIS	FED. AID PROJECT NO. 5003(00)	

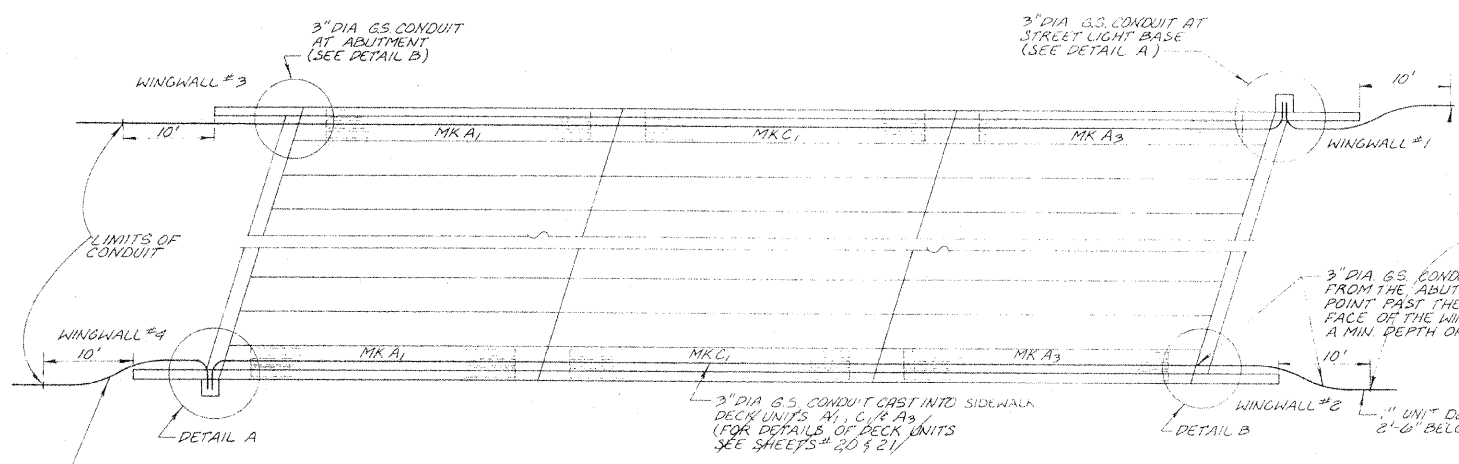
BILL OF MATERIALS		
ITEM	UNIT	QUANT.
WATERPROOF MEMBRANE SYSTEM	SQ. YD.	630
BITUMINOUS CONCRETE SURFACE COURSE, MIX D, CLASS I	TON	110



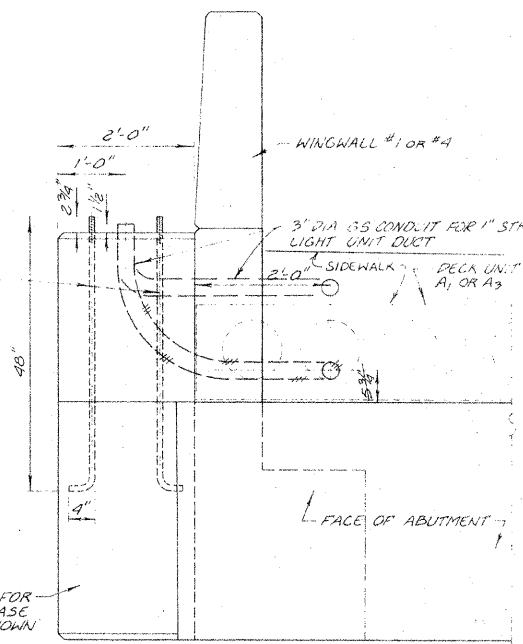
PLAN SURFACE GRADES ON BRIDGE DECK



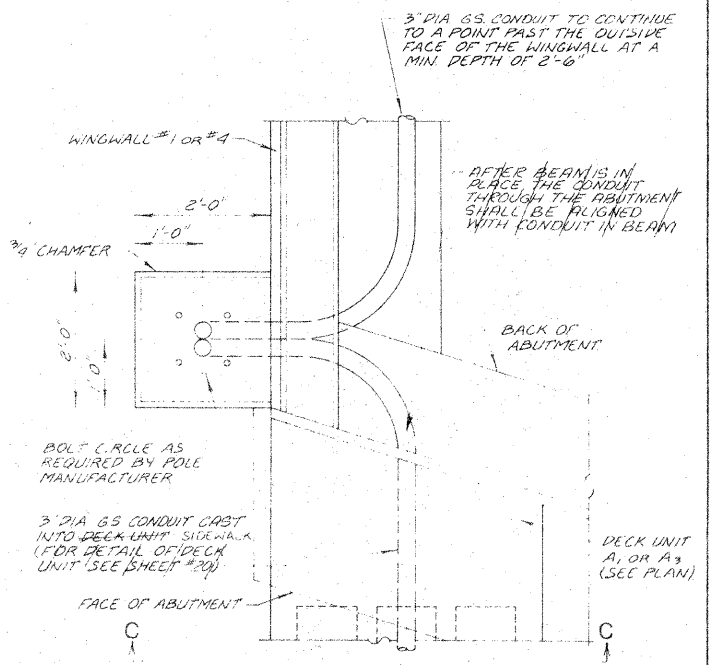
DETAIL B AT WINGWALL #2 & #3



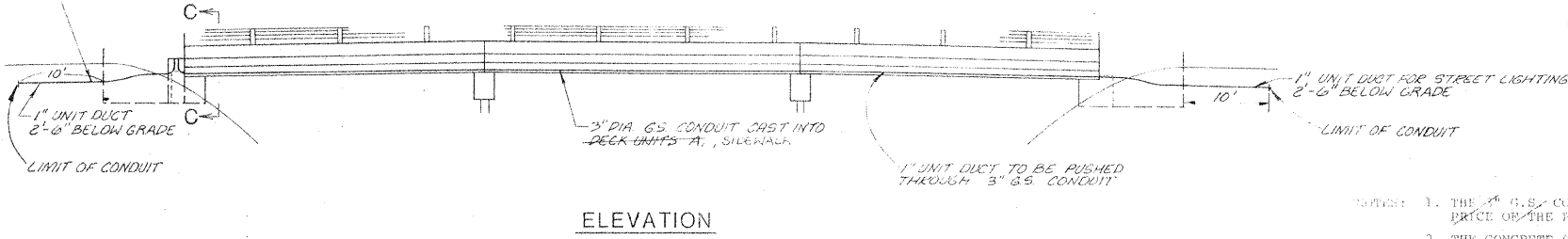
PLAN STREET LIGHT CABLE DUCT - RACEWAY



SECTION C-C AT WINGWALL #1 & #4



DETAIL A AT WINGWALL #1 & #4



ELEVATION

- NOTES:
1. THE 3" G.S. CONDUIT SHOWN SHALL BE INCLUDED IN THE UNIT PRICE OF THE PRECAST PRESTRESSED CONCRETE DECK BEAMS.
  2. THE CONCRETE STREET LIGHTING FOUNDATIONS WHICH ARE SHOWN AS PART OF THE BRIDGE STRUCTURE WILL BE PAID AS PART OF THE BRIDGE.
  3. THE 1" UNIT DUCT SHOWN WILL BE PAID FOR SEPARATELY. (SEE STREET LIGHTING PLANS)

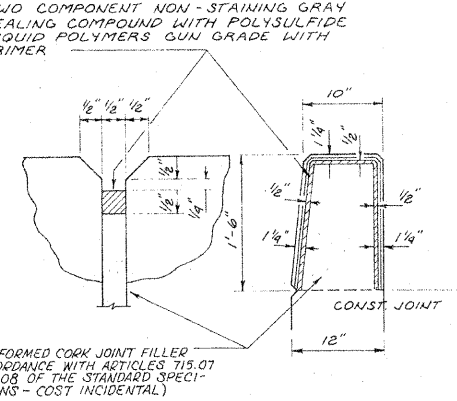
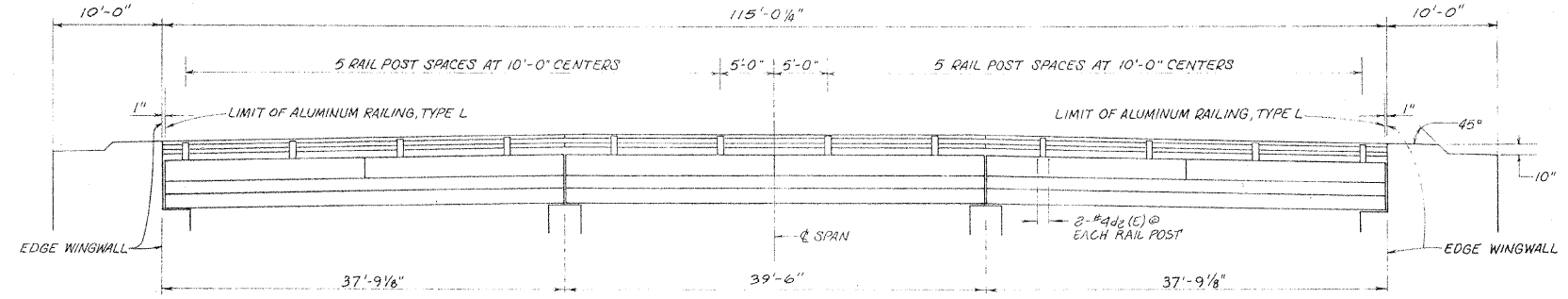
REVISIONS	
NAME	DATE
R.L. Gross	1-30-78
AS BUILT D.C.N.	10-9-80
Added	7-2-11

ILLINOIS DIVISION OF HIGHWAYS  
MISC. BRIDGE DETAILS (2)

ARDMORE AVENUE BRIDGE

SCALE: AS SHOWN  
DATE: 12-28-77  
DRAWN BY: D.C.N.  
CHECKED BY: G.A.S.

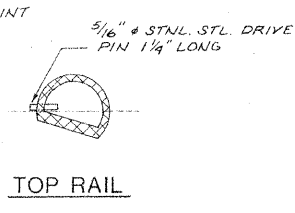
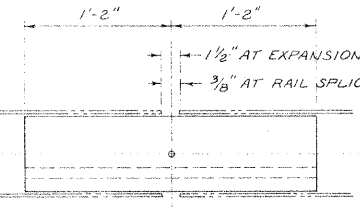
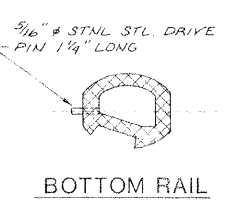
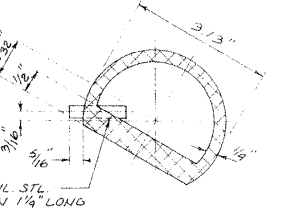
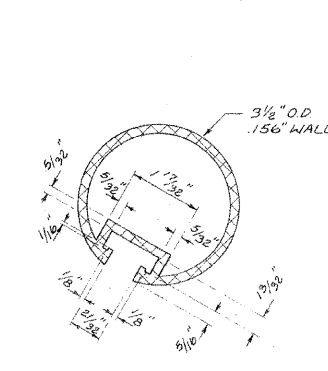
RTE	SECTION	COUNTY	TOTAL SHEETS	SHEET NO.
PAU 2651	76-00046-00-63	DUPAGE	36	24
STA	TO STA			
FED. ROAD DIST. NO.	ILLINOIS	FED. AID PROJECT/MS-5003(100)		



**BILL OF MATERIAL**

ITEM	UNIT	QUANT.
ALUMINUM RAILING, TYPE L	LIN. FT.	230

**GENERAL NOTES**  
 All posts shall be normal to parapet.  
 All aluminum alloy extruded rail shall be supplied in modular lengths of 30 feet, except at the end of bridge or over open joints in bridge deck where the rail shall be attached to a minimum of 2 posts. If the rail is on a horizontal curve of 2300 foot radius or less, the modular lengths may be reduced but shall be attached to a minimum of 2 posts.  
 All joints in rail shall be spliced per detail.  
 Provide 1-1/8" and 2-1/16" aluminum shims for 25' of the posts. Rail elements shall be parallel to grade - High spots shall be ground and low spots shined.  
 Aluminum alloy rail shall conform to ASTM B221 Alloy 6061-T6 or 6351-T5 with minimum yield 35 KSI, minimum tensile 38 KSI, and elongation of 16% in 2 inches.  
 Railing shall be in accordance with Section 508 of the Standard Specifications, except as noted, and shall be paid for at the contract unit price per lineal foot for Aluminum Railing, Type L.



**PARAPET JOINT DETAIL**

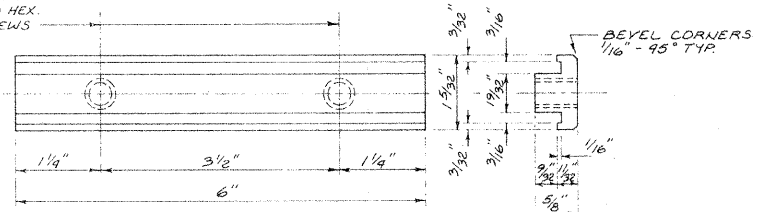
SECTION THRU TOP RAIL

SECTION THRU SPLICE TOP RAIL

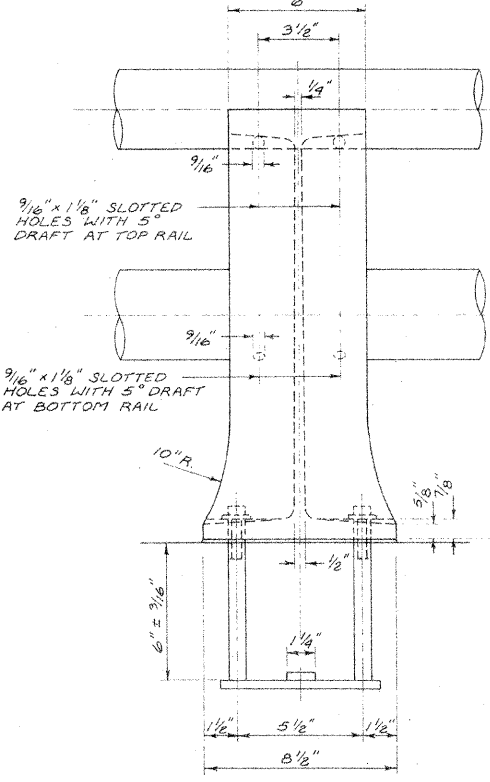
RAIL SPLICE

TOP RAIL

DRILL & TAP FOR 1/2" (STNL STL.) HEX. HEAD CAP SCREWS

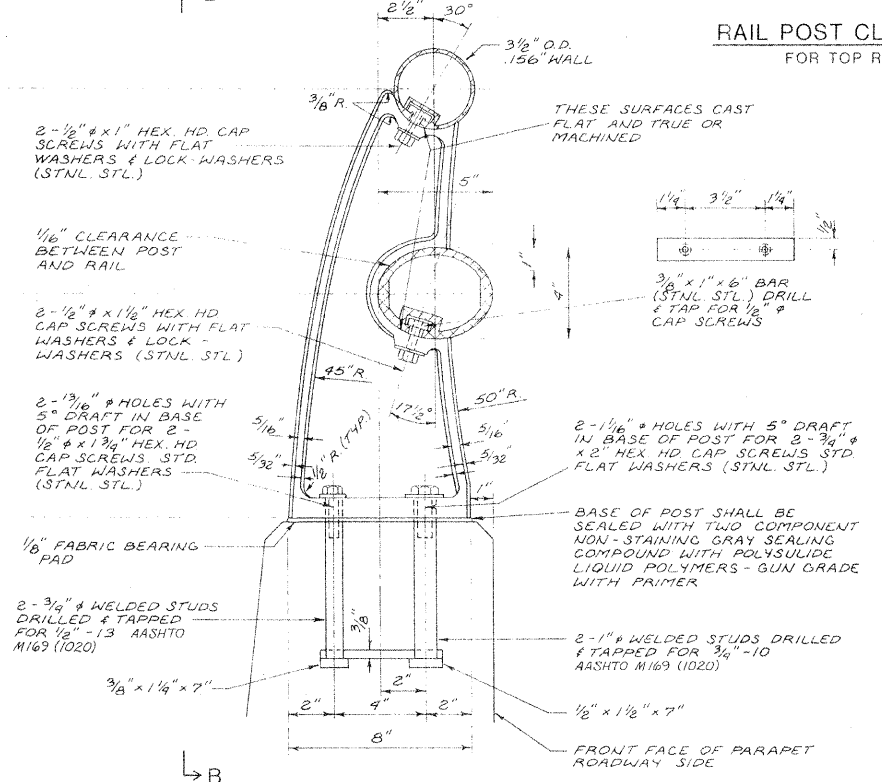


RAIL POST CLAMP BAR FOR TOP RAIL

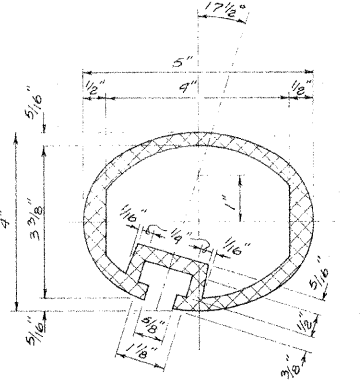


VIEW B-B

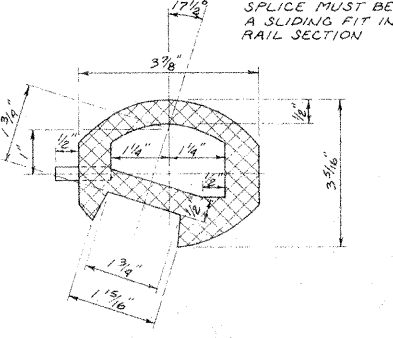
**RAIL POST DETAILS**



SECTION A-A ALSO AT WINGWALL



SEC. THRU ELLIPTICAL RAIL SECTION



SECTION THRU SPLICE

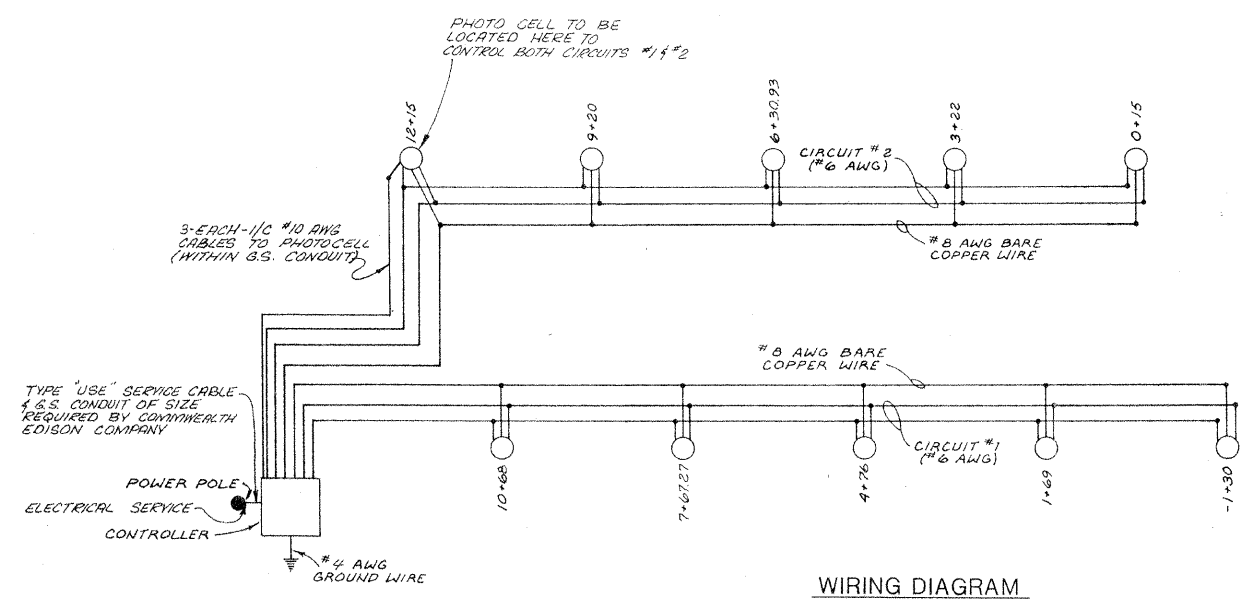
ILLINOIS DIVISION OF HIGHWAYS  
**HANDRAIL DETAILS**  
ARDMORE AVENUE BRIDGE

REVISIONS	
NAME	DATE
D.C.N.	1-30-78
Added	7-21-11

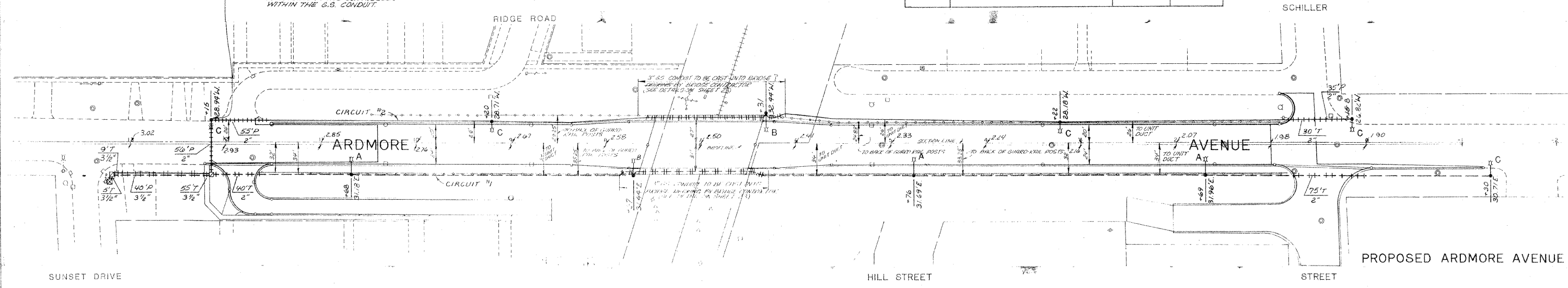
SCALE: NONE  
 DATE: 10-22-77  
 DRAWN BY: D.C.N.  
 CHECKED BY: G.A.S.

ROUTE	SECTION	COUNTY	TOTAL SHEETS	SHEET NO.
FAU 2451	76-00076 00-05	DuPAGE	36	25
STA.		TO STA.		
FED. ROAD DIST NO.		ILLINOIS	FED. AID PROJECT/MS-5003/002	

CODE NO.	ITEM	UNIT	QUANTITY
L00006	CONDUIT IN TRENCH, 2" DIA., GALVANIZED STEEL	LIN. FT.	145
L00009	CONDUIT IN TRENCH, 3 1/2" DIA., GALVANIZED STEEL	LIN. FT.	69
L00147	CONDUIT PUSHED, 2" DIA., GALVANIZED STEEL	LIN. FT.	146
L00150	CONDUIT PUSHED, 3 1/2" DIA., GALVANIZED STEEL	LIN. FT.	40
L02200	POLE FOUNDATION	EACH	8
L02702	LIGHTING UNIT COMPLETE IN PLACE, 12' MAST ARM	EACH	3
L02703	LIGHTING UNIT COMPLETE IN PLACE, 8' MAST ARM	EACH	5
L03200	HANDHOLE	EACH	2
L04300	TRENCH AND BACKFILL	LIN. FT.	2239
L04779	ELECTRIC CABLE IN CONDUIT, 600V (PLASTIC INSULATED) 1/C NO. 10	LIN. FT.	561
L05055	LIGHTING UNIT COMPLETE IN PLACE, 10' MAST ARM	EACH	2
L05271	#8 AWG 1/C GROUND WIRE	LIN. FT.	2895
L05275	UNIT DUCT - 2 #6 AWG 1/C 600V CABLE IN 1" POLYETHYLENE DUCT	LIN. FT.	2849
L05379	CONTROL CABINET AND FOUNDATION, COMPLETE	EACH	1
L05566	SERVICE CONNECTION, MODIFIED	EACH	1



NOTE: PHOTOCELL TO BE LOCATED ON THIS POLE & 3-1/10 #10 CABLES SHALL BE INSTALLED FROM THE PHOTOCELL TO THE CONTROLLER WITHIN THE G.S. CONDUIT.



- NOTES:
1. ALL STREET LIGHTING WORK UNDER THIS CONTRACT SHALL CONFORM TO THE APPLICABLE REQUIREMENTS OF "AMERICAN NATIONAL STANDARD PRACTICE FOR ROADWAY LIGHTING" UNLESS OTHERWISE SPECIFIED.
  2. 3-1/10 NO. 10 CABLES SHALL BE INSTALLED WITHIN THE G.S. CONDUIT FROM THE PHOTOCELL AT THE POLE AT STA. 12 + 15 TO THE CONTROLLER. SEPARATE PAYMENT WILL BE MADE FOR THE CABLES FROM THE POLE BASE TO THE CONTROLLER. THE COST OF THE CABLES FROM THE PHOTOCELL TO THE POLE BASE SHALL BE INCLUDED IN THE COST OF THE LIGHTING UNIT COMPLETE IN PLACE.
  3. THE ELECTRICAL SERVICE SHALL MEET THE REQUIREMENTS OF COMMONWEALTH EDISON COMPANY. THE CUSTOMER'S CHARGE FROM COMMONWEALTH EDISON COMPANY SHALL BE INCLUDED IN THE COST OF SERVICE CONNECTION, MODIFIED.
  4. THE SPECIAL FOUNDATIONS FOR THE TWO POLES ATTACHED TO THE BRIDGE ARE SHOWN ON SHEET #23. THE SPECIAL FOUNDATIONS ARE INCLUDED IN THE COST OF THE BRIDGE AND ARE NOT TO BE PAID FOR SEPARATELY.
  5. THE 3" G.S. CONDUIT SHOWN AT THE BRIDGE TO BE DONE BY THE BRIDGE CONTRACTOR SHALL NOT BE MEASURED SEPARATELY FOR PAYMENT BUT SHALL BE INCLUDED IN THE BRIDGE COSTS. THE 1" UNIT-DUCT TO BE PUSHED THROUGH THE 3" CONDUIT AT THE BRIDGE WILL BE MEASURED FOR PAYMENT.

- LIGHT STANDARDS**
- 0.94 AVG. MAINTAINED FOOT CANDLES (MIN)
  - 0.75 LAMP LUMEN DEPRECIATION FACTOR
  - 0.95 DIRT FACTOR
  - 30' MOUNTING HEIGHT
  - A - 12' MAST ARM
  - B - 10' MAST ARM
  - C - 8' MAST ARM
  - HIGH PRESSURE SODIUM, 250 WATTS.
  - 25,500 LUMENS, TYPE III - M - CO
  - UNIFORMITY RATIO 3.8 : 1
  - (AVG. TO MIN. FC)

- LEGEND**
- ☒ CONTROL CABINET AND FOUNDATION
  - ⊙ LIGHT STANDARD (LIGHTING UNIT)
  - STATION
  - OFFSET FROM BASELINE
  - CIRCUIT #1 ⊕ HANDHOLE (FOR DETAIL SEE STATE STANDARD 2368)
  - CIRCUIT #2 ⊕ 2-1/10 #6 AWG IN 1 IN. P.V.C. CONDUIT (UNIT DUCT) & #8 AWG GROUND WIRE
  - GALVANIZED STEEL CONDUIT
  - UPPER NUMERAL INDICATES LENGTH IN TRENCH (T) OR PUSHED (P). LOWER NUMERAL INDICATES SIZE.
  - ⊕ GROUND ROD

NAME	DATE
J. Ben Hatten	12/22/77
D.C.N.	1-30-78
AS BUILT D.C.N.	10-4-80
Added	7-2-11

ILLINOIS DIVISION OF HIGHWAYS

**STREET LIGHTING PLAN**

ARDMORE AVENUE

SCALE: 50' 0' 50'

DATE: 11/30/77

DRAWN BY: D. C. N.

CHECKED BY: G.A.S.