

BENCHMARKS

SOURCE:

STATION DESIGNATION: VILLAGE OF VILLA PARK BENCHMARK #14
 ESTABLISHED BY: VILLAGE OF VILLA PARK
 DATE: 06/28/2002

ELEVATION: 671.83 (PUBLISHED AND HELD)
 DATUM: NGVD29
 DESCRIPTION: BRONZE DISK ON TOP OF THE WEST HEADWALL OF THE EAST POND AT NORTH PARK WHERE ARDMORE AVENUE DEAD ENDS NORTH OF NORTH AVENUE.

STATION DESIGNATION: VILLAGE OF VILLA PARK BENCHMARK #2
 ESTABLISHED BY: VILLAGE OF VILLA PARK

ELEVATION: 679.86 (PUBLISHED)
 DATUM: NGVD29
 DESCRIPTION: BRONZE DISK IN CONCRETE BASE OF TRAFFIC SIGNAL AT SOUTHWEST CORNER OF VILLA AVENUE AND NORTH AVENUE.

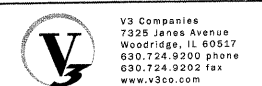
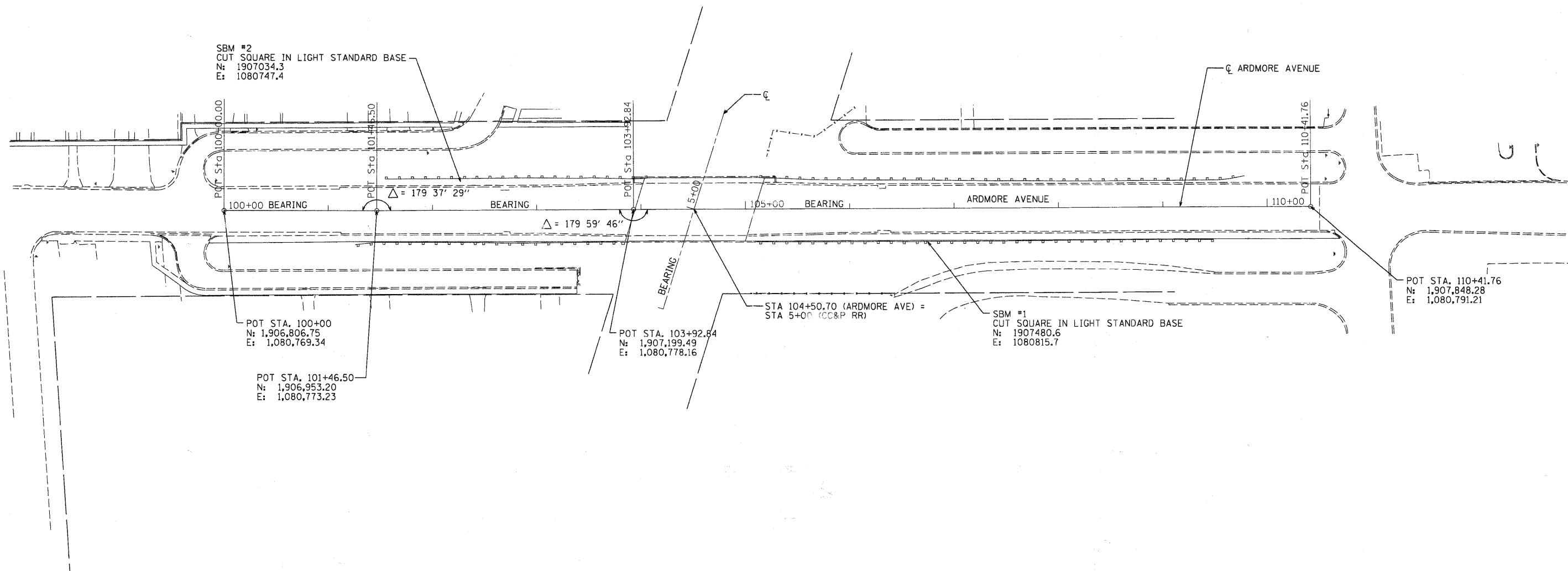
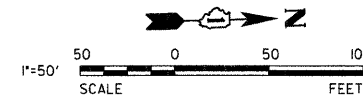
SITE:

STATION DESIGNATION: SBM #1
 ESTABLISHED BY: V3 COMPANIES OF ILLINOIS, LTD.
 DATE: 08/02/07

ELEVATION: 708.73 (MEASURED)
 DATUM: NGVD29
 DESCRIPTION: CUT SQUARE IN LIGHT STANDARD BASE (SOUTHWESTERLY), FIRST LIGHT STANDARD BASE NORTH OF ARDMORE BRIDGE ON EASE SIDE OF ARDMORE AVENUE.

STATION DESIGNATION: SBM #2
 ESTABLISHED BY: V3 COMPANIES OF ILLINOIS, LTD.
 DATE: 08/02/07

ELEVATION: 709.11 (MEASURED)
 DATUM: NGVD29
 DESCRIPTION: CUT SQUARE IN LIGHT STANDARD BASE (EAST), FIRST LIGHT STANDARD BASE SOUTH OF BRIDGE ON WEST SIDE OF ARDMORE AVENUE.



USER NAME = #USER#	DESIGNED -	REVISED -
PLOT SCALE = #SCALE#	DRAWN -	REVISED -
PLOT DATE = 6/13/2011	CHECKED -	REVISED -
	DATE	REVISED -

VILLAGE OF VILLA PARK

**ARDMORE AVENUE OVER CC&P RAILROAD
 ALIGNMENT, TIES AND BENCHMARKS**

SCALE: 1"=50' SHEET NO. 1 OF 1 SHEETS STA. TO STA.

F.A.U. RTE.	SECTION	COUNTY	SHEET NO.	TOTAL SHEETS
2651	07-00083-00-BR	DUPAGE	08	50
CONTRACT NO. 63601				

ILLINOIS FED. AID PROJECT