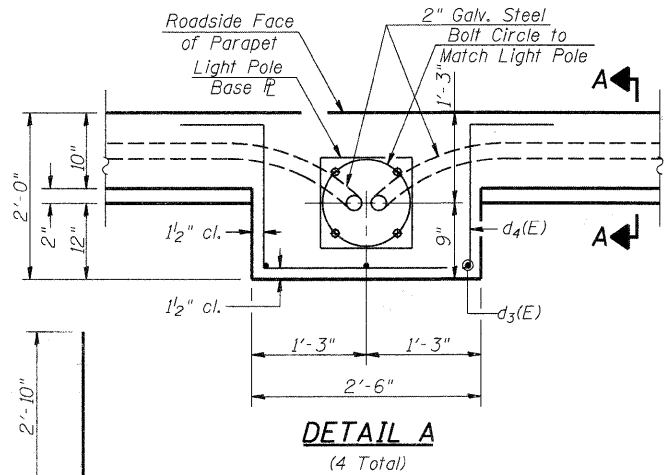


**CROSS SECTION**



**NOTES**

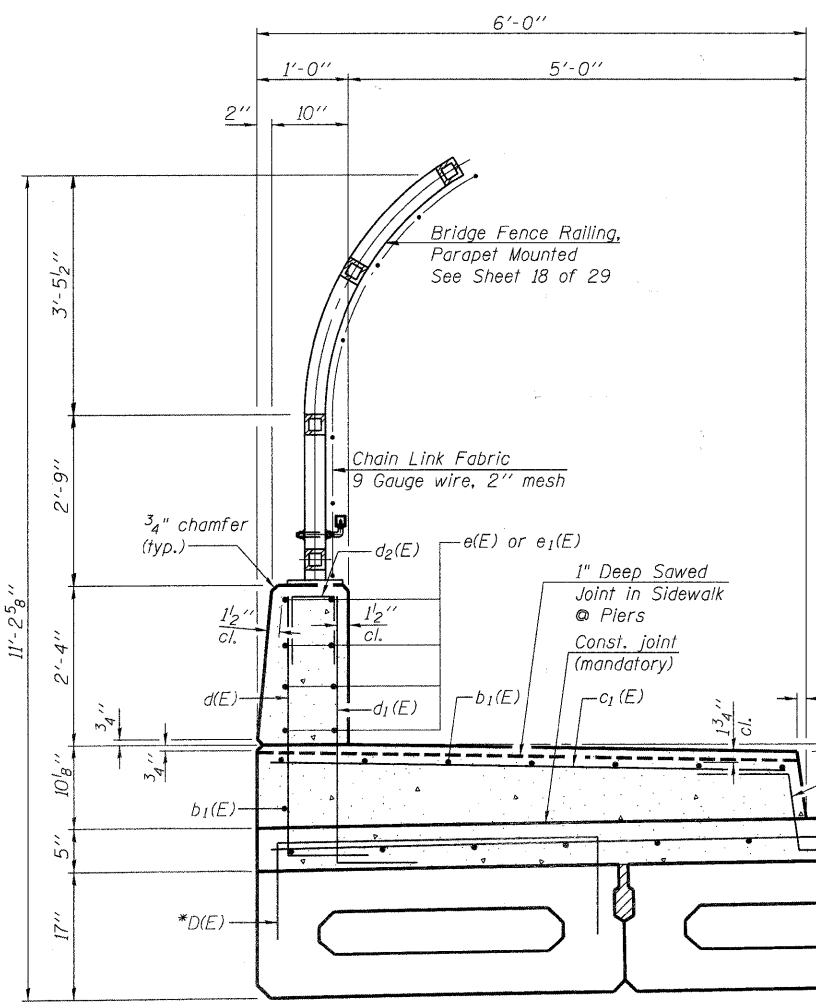
Cost of anchor bolts is included with Concrete Superstructure.  
 See Sheet 1 of 29 for locations of light poles.  
 Move vertical bars and cut horizontal bars in parapet to clear Junction Boxes. Cost is included with Reinforcement Bars, Epoxy Coated.  
 For quantity of Conduit Embedded in Structure See Drainage and Utility Plans.  
 Coordinate location of conduit with Electrical Contractor.

**SUPERSTRUCTURE BILL OF MATERIAL**

Bar	No.	Size	Length	Shape
a(E)	230	#4	33'-0"	—
b(E)	248	#4	29'-8"	—
b1(E)	64	#5	29'-11"	—
c(E)	230	#5	2'-3"	┌
c1(E)	230	#5	5'-8"	┌
d(E)	230	#4	4'-1"	┌
d1(E)	230	#6	4'-1"	┌
d2(E)	52	#5	2'-0"	┌
d3(E)	12	#6	4'-10"	┌
d4(E)	20	#6	9'-3"	┌
e(E)	64	#4	18'-6"	—
e1(E)	32	#4	19'-6"	—
Concrete Wearing Surface, 5"		Sq. Yd.	791	
Protective Coat		Sq. Yd.	863	
Bridge Deck Grooving		Sq. Yd.	612	
Reinforcement Bars, Epoxy Coated		Pound	17,240	
Concrete Superstructure		Cu. Yd.	56.4	

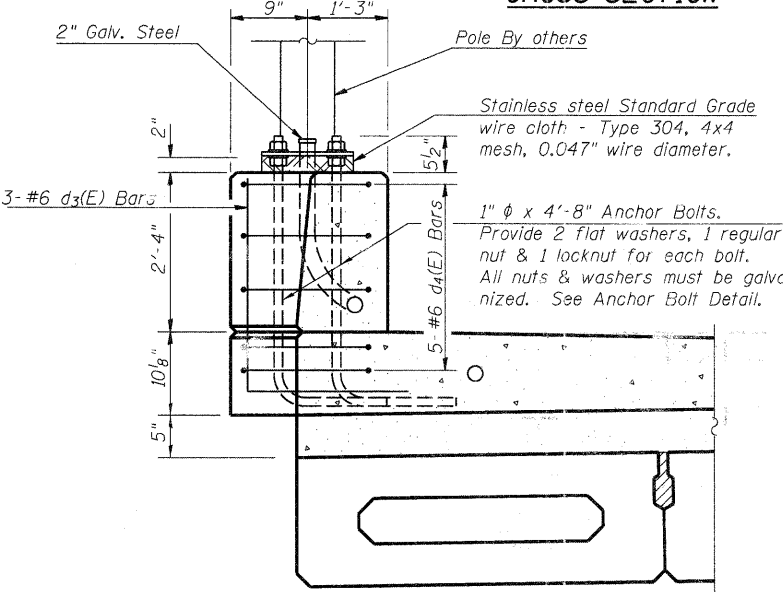
Bars indicated thus 6x4-#4 etc. indicates 6 lines of bars with 4 lengths per line.

**SUPERSTRUCTURE CROSS SECTION AND DETAILS**  
**STRUCTURE NO. 022-6930**

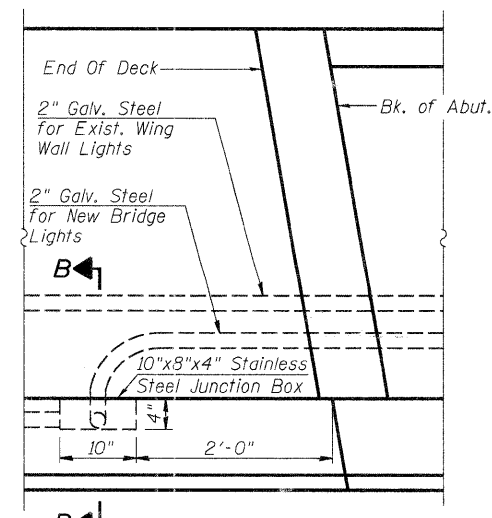


**SECTION THRU SIDEWALK**

\*D(E) bars cast-in-place in each outside beam. See sheet 12 and 14 of 29 for details.

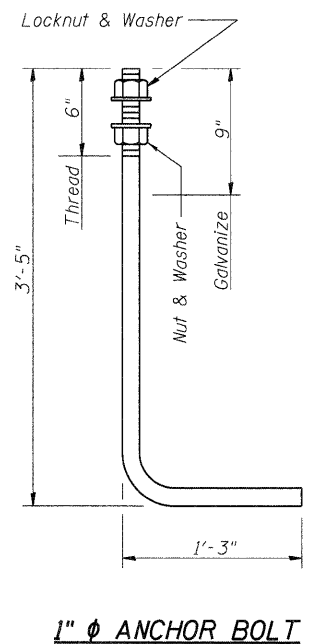


**SECTION A-A**

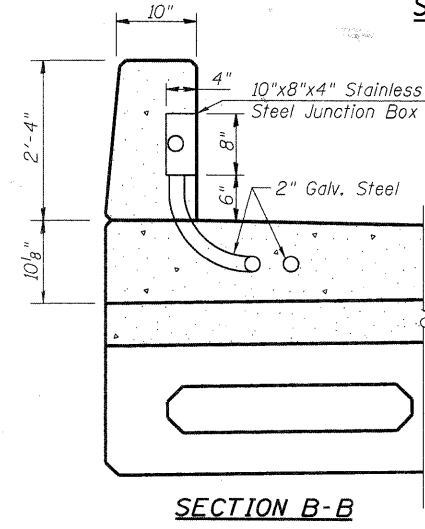


**PLAN AT JOINT SHOWING CONDUIT**  
 (Typ. all 4 Corners)

**BAR d3(E)**

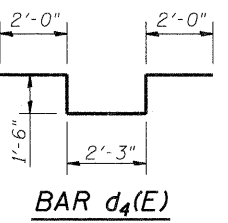


**SECTION B-B**



**BAR LAPS**

#4 bars = 1'-4"  
 #5 bars = 1'-8"



V3 Companies of Illinois Ltd.  
 7325 Janes Avenue  
 Woodridge, IL 60517  
 630.724.9200 phone  
 630.724.9202 fax  
 www.v3co.com

SHEET NO. 6 29 SHEETS	F.A.U. RTE.	SECTION	COUNTY	TOTAL SHEETS	SHEET NO.
	2651	07-00083-00-BR	DUPAGE	50	20
			CONTRACT NO. 63601		
FED. ROAD DIST. NO. ILLINOIS FED. AID PROJECT					