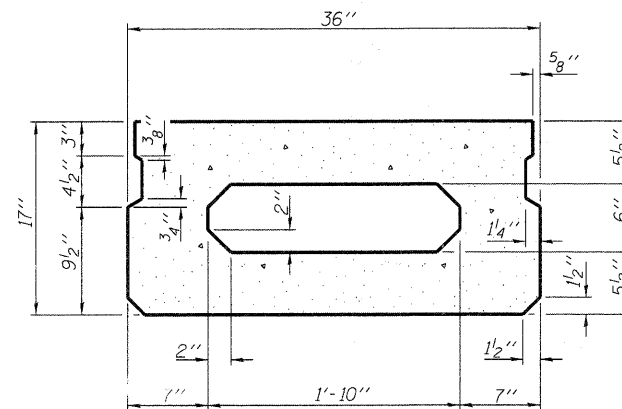
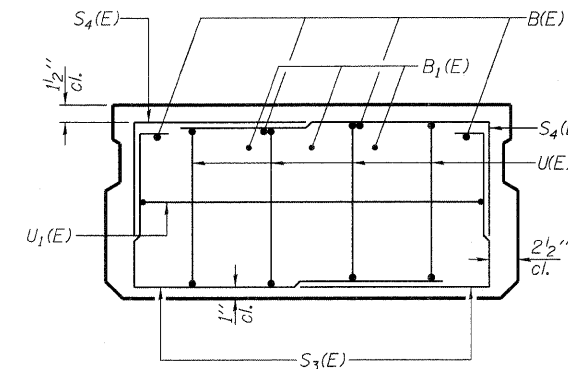


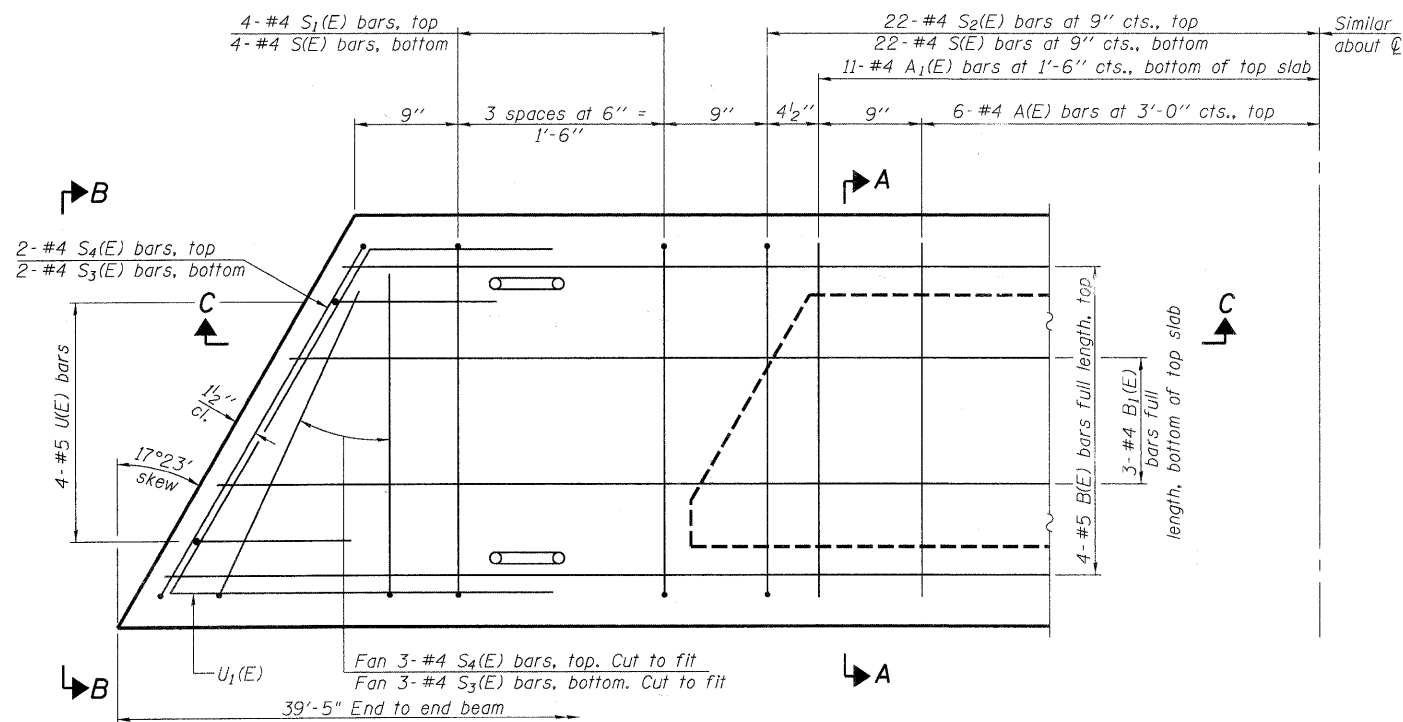
**SECTION C-C**



**SECTION A-A**  
(Showing dimensions)

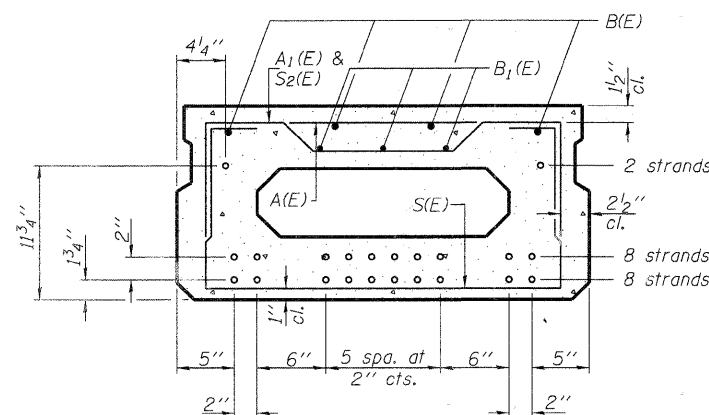


**VIEW B-B**



**PLAN VIEW**

Note: Spacing of S(E) and S<sub>2</sub>(E) bars may be adjusted up to 4" in the immediate area of the transverse tie diaphragms to miss the block outs for the transverse ties.



**SECTION A-A**

(Showing reinforcement and permissible strand locations)

Note: Place the number of strands specified in each row symmetrically about the centerline of beam in the permissible strand locations shown.

**BAR LIST**  
**ONE BEAM ONLY**  
(For information only)

Bar	No.	Size	Length	Shape
A(E)	12	#4	2'-7"	—
A <sub>1</sub> (E)	22	#4	2'-10"	~
B(E)	4	#5	39'-2"	—
B <sub>1</sub> (E)	3	#4	39'-2"	—
S(E)	52	#4	5'-9"	⌈
S <sub>1</sub> (E)	8	#4	4'-3"	⌈
S <sub>2</sub> (E)	44	#4	4'-6"	⌈
S <sub>3</sub> (E)	10	#4	4'-1"	⌈
S <sub>4</sub> (E)	10	#4	3'-4"	⌈
U(E)	8	#5	3'-6"	⌈
U <sub>1</sub> (E)	2	#4	5'-11"	⌈

Note: See sheet 11 of 29 for additional details and Bill of Material.

**MINIMUM BAR LAP**

#4 bar = 2'-0"  
#5 bar = 2'-6"

**17" x 36" PPC DECK BEAMS SPAN 2**  
**STRUCTURE NO. 022-6930**



V3 Companies of Illinois Ltd.  
7325 Janes Avenue  
Woodridge, IL 60517  
630.724.9200 phone  
630.724.9202 fax  
www.v3co.com

SHEET NO. 10	F.A.U. RTE.	SECTION	COUNTY	TOTAL SHEETS	SHEET NO.
	2651	07-00083-00-BR	DUPAGE	50	24
29 SHEETS	CONTRACT NO. 63601				
FED. ROAD DIST. NO. _		ILLINOIS	FED. AID PROJECT		