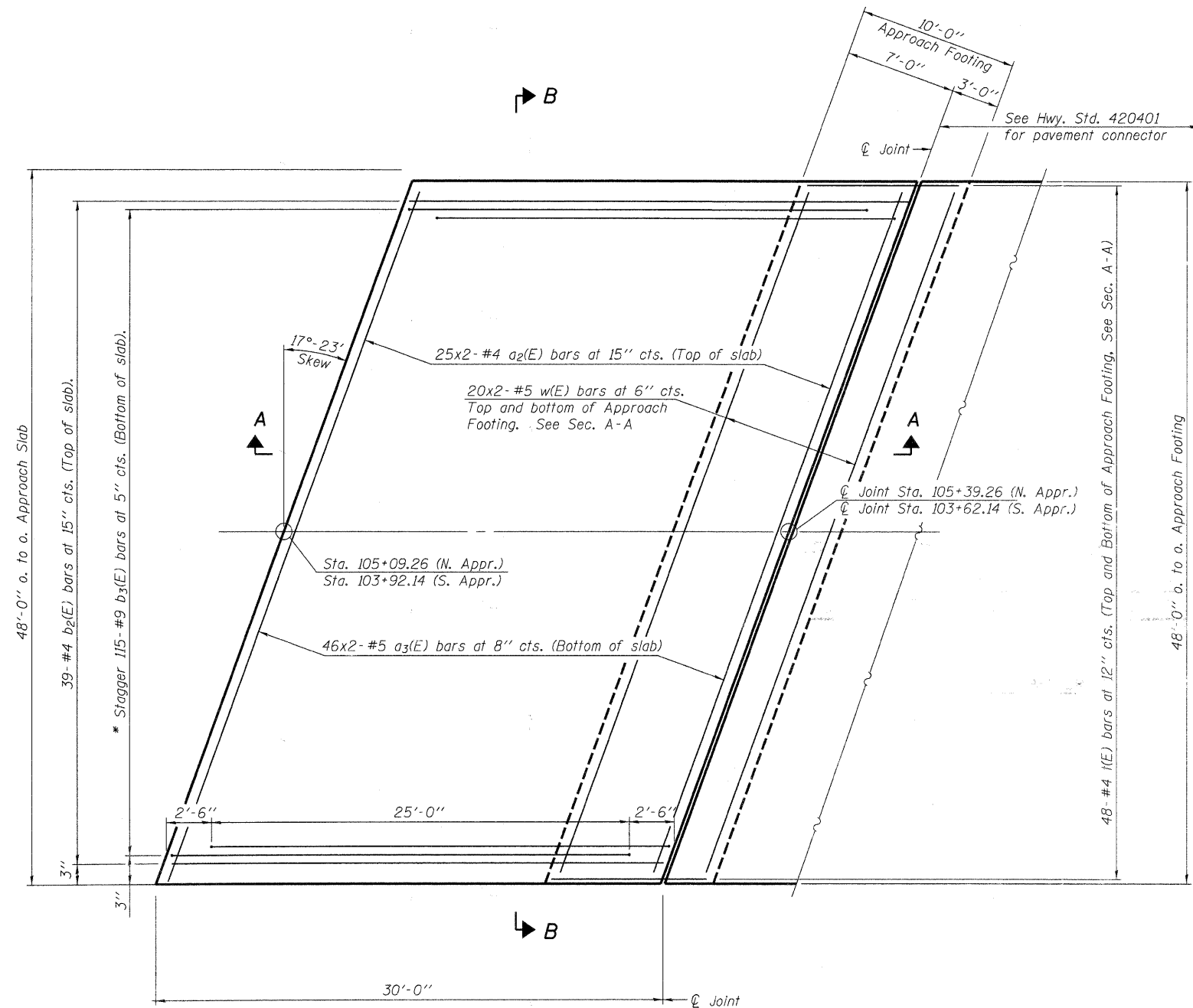


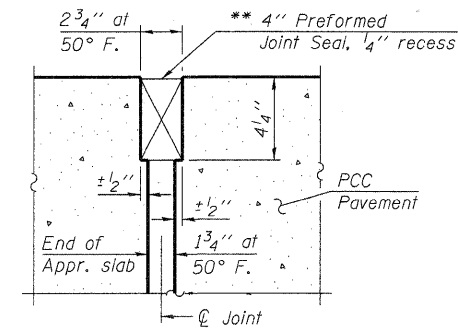
Notes:
 See sheet 17 of 29 for Sections A-A & B-B.
 $a_2(E)$ and $a_3(E)$ bar spacings measured along ϕ Rdwy.



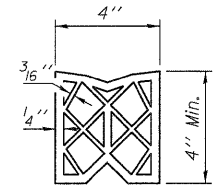
PLAN

* Tilt #9 $b_3(E)$ bars as required to maintain clearance.

** Cost included with Concrete Superstructure.



DETAIL A



PREFORMED JOINT SEAL

BAR LAPS

#4 bars = 1'-4"
 #5 bars = 1'-8"



V3 Companies of Illinois Ltd.
 7325 Janes Avenue
 Woodridge, IL 60517
 630.724.9200 phone
 630.724.9202 fax
 www.v3co.com

(Sheet 1 of 2)
BRIDGE APPROACH SLAB DETAILS-I
STRUCTURE NO. 022-6930

SHEET NO. 16	F.A.U. RTE.	SECTION	COUNTY	TOTAL SHEETS	SHEET NO.
29 SHEETS	2651	07-00083-00-BR	DUPAGE	50	30
			CONTRACT NO. 63601		
FED. ROAD DIST. NO. _		ILLINOIS FED. AID PROJECT			