

PROGRAM AND OFFICE ENGINEER: CHARLES F. RIDDLE, P.E. (847)705-4406 SCHAUMBURG, IL.

**INDEX OF SHEETS**

- 1.) COVER SHEET, INDEX OF SHEETS, LOCATION MAP
- 2.) INDEX OF HIGHWAY STANDARDS, GENERAL CONSTRUCTION NOTES, MWRDGC NOTES, SPECIAL PROJECT NOTES
- 3.) SUMMARY OF QUANTITIES
- 4.) TYPICAL SECTIONS, HOT-MIX ASPHALT MIXTURE REQUIREMENTS
- 5.) SPECIAL PROJECT DETAILS
- 6.) SPECIAL PROJECT DETAILS
- 7-11.) PLAN: 16TH STREET (RESURFACING) - LOMBARD AVENUE TO CENTRAL AVENUE
- 12-13.) PLAN: 16TH STREET (PAVEMENT MARKING) - LOMBARD AVENUE TO CENTRAL AVENUE

**INDEX OF DISTRICT 1 STANDARDS**

- 14.) BD-08 DETAILS FOR FRAMES AND LIDS ADJUSTMENTS WITH MILLING
- 15.) BD-22 PAVEMENT PATCHING FOR HMA SURFACED PAVEMENT
- 16.) BD-32 BUTT JOINT AND HMA TAPER DETAILS
- 17.) BD-33 HMA TAPER AT EDGE OF PCC PAVEMENT
- 18.) TC-10 TRAFFIC CONTROL & PROTECTION FOR SIDE ROADS, INTERSECTIONS, & DRIVEWAYS
- 19.) TC-11 TYPICAL APPLICATIONS RAISED REFLECTIVE PAVEMENT MARKINGS (SNOW PLOW RESISTANT)
- 20.) TC-13 DISTRICT ONE TYPICAL PAVEMENT MARKINGS
- 21.) TC-14 TRAFFIC CONTROL AND PROTECTION AT TURN BAYS
- 22.) TC-16 PAVEMENT MARKING LETTERS AND SYMBOLS FOR TRAFFIC STAGING
- 23.) TC-18 SIGNING FOR FLAGGING OPERATIONS AT WORK ZONE OPENINGS
- 24.) TC-22 ARTERIAL ROAD INFORMATION SIGN
- 25.) TS-07 DETECTOR LOOP INSTALLATION DETAILS FOR ROADWAY RESURFACING

**HIGHWAY STANDARDS**  
SEE SHEET 2

**TRAFFIC DATA**

ADT: 16TH STREET  
EXISTING: 10,500 (2011)

**DESIGN DESIGNATION:**

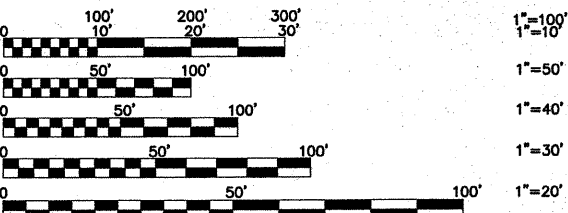
COLLECTOR 0.90 (COMP-20)

**POSTED SPEED**

30 MPH-16TH STREET (EXISTING)

**DESIGN SPEED**

30 MPH-16TH STREET (PROPOSED)



FULL SIZE PLANS HAVE BEEN PREPARED USING STANDARD ENGINEERING SCALES. REDUCED SIZED PLANS WILL NOT CONFORM TO STANDARD SCALES. IN MAKING MEASUREMENTS ON REDUCED PLANS, THE ABOVE SCALES MAY BE USED.

**JULIE JOINT UTILITY LOCATION INFORMATION FOR EXCAVATION CALL 811**

Know what's below. Call before you dig.

**Frank Novotny & Associates, Inc.**  
825 Midway Drive • Willowbrook, IL • 60527 • Telephone: (630) 887-8640 • Fax: (630) 887-0132  
Civil Engineers Municipal Consultants ILLINOIS PROFESSIONAL DESIGN FIRM NO. 184-000928

FNA PROJECT NO. 10080 DRAWN/DESIGNED JFP/AMS CHECKED/APPROVED AMS/TPG

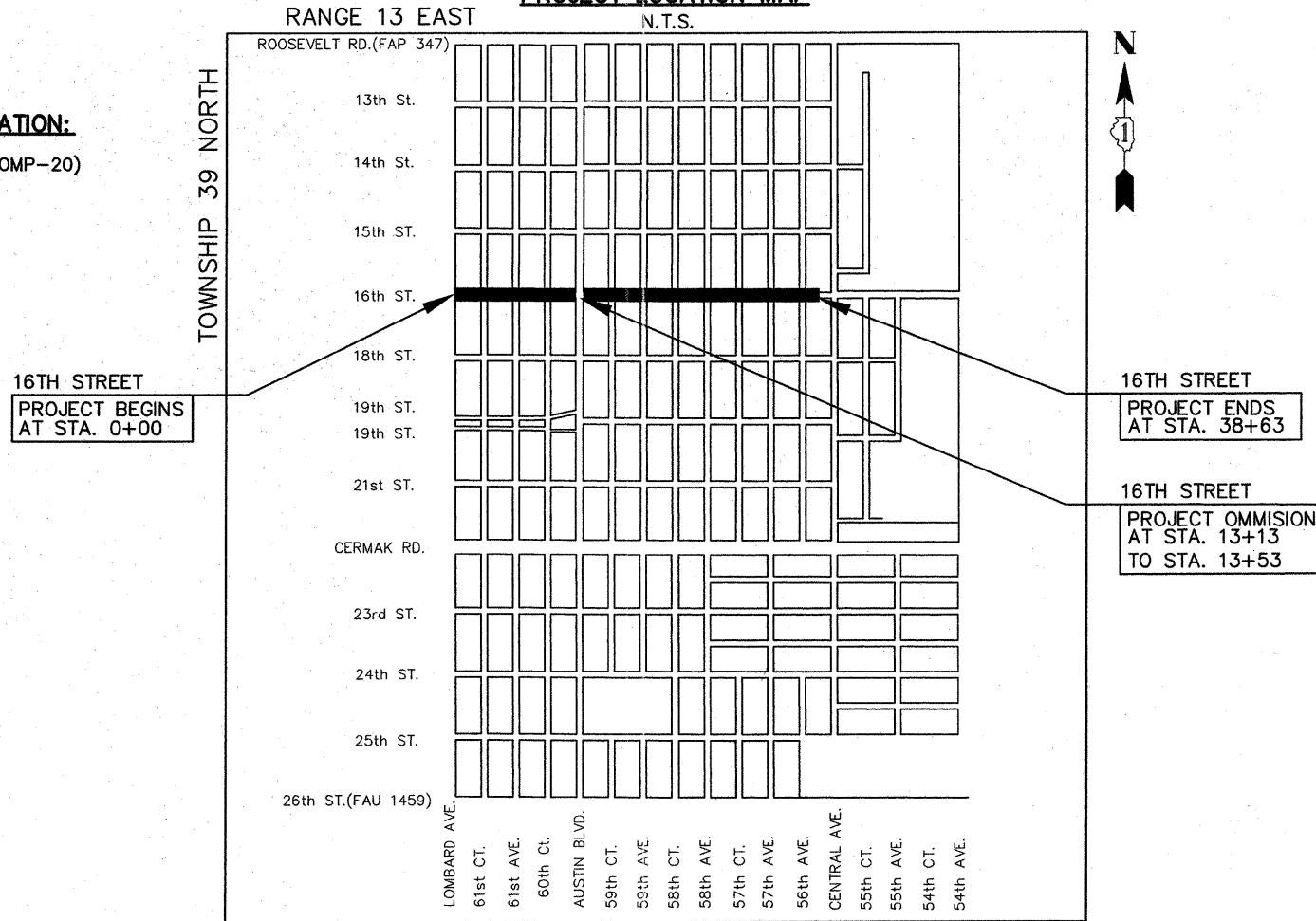
REVISIONS			
NO.	BY	DATE	DESCRIPTION
1	AMS	4/7/11	PER I.D.O.T. COMMENTS
2	AMS	4/22/11	PER I.D.O.T. COMMENTS

CONTRACT NO. 63607

**STATE OF ILLINOIS  
DEPARTMENT OF TRANSPORTATION  
DIVISION OF HIGHWAYS  
PLANS FOR PROPOSED  
FEDERAL AID HIGHWAY**

FAU 1447 (16TH STREET)  
LOMBARD AVENUE TO FAU 2798 (CENTRAL AVENUE)  
RESURFACING  
SECTION 11-00213-00-RS  
PROJECT HPP-3045(003)  
TOWN OF CICERO  
COOK COUNTY  
C-91-471-11

**PROJECT LOCATION MAP**



PROJECT LOCATED IN THE TOWN OF CICERO

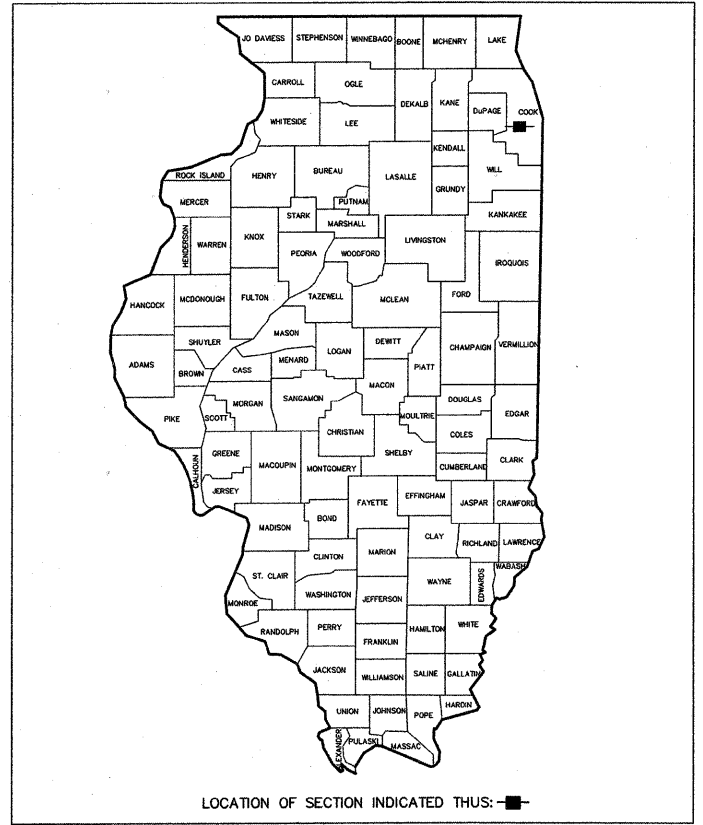
— DENOTES LOCATION OF IMPROVEMENT IN CICERO TOWNSHIP

**LENGTH OF PROJECT**

GROSS LENGTH OF PROJECT 3,863 FEET (0.73 MILES)  
NET LENGTH OF PROJECT 3,822 FEET (0.72 MILES)

FAU RTE	SECTION	COUNTY	TOTAL SHEETS	SHEET NO.
1447	11-00213-00-RS	COOK	25	1
F.H.W.A. REG.	ILLINOIS	PROJECT HPP-3045(003)		

CONTRACT NO. 63607



STATE OF ILLINOIS  
DEPARTMENT OF TRANSPORTATION  
DIVISION OF HIGHWAYS

APPROVED 26 April 20\_11  
TOWN PRESIDENT Larry Dominick  
LARRY DOMINICK, PRESIDENT

PASSED May 24 20\_11  
Timothy P. Geary  
DISTRICT 1 ENGINEER OF LOCAL ROADS & STREETS

RELEASING FOR BID  
BASED ON LIMITED REVIEW MAY 25, 20\_11  
Diane M. O'Keefe  
DEPUTY DIRECTOR OF HIGHWAYS, REGION 1 ENGINEER

Timothy P. Geary  
TIMOTHY P. GEARY, P.E.  
REG. NO. 62-043796  
EXPIRES 11-30-2011  
DATE 4-25-11

SEAL

**PRINTED BY THE AUTHORITY  
OF THE STATE OF ILLINOIS**