

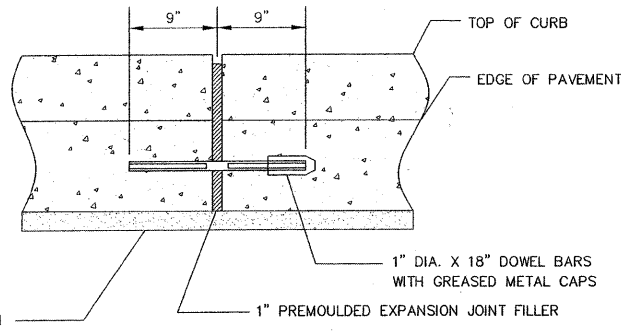
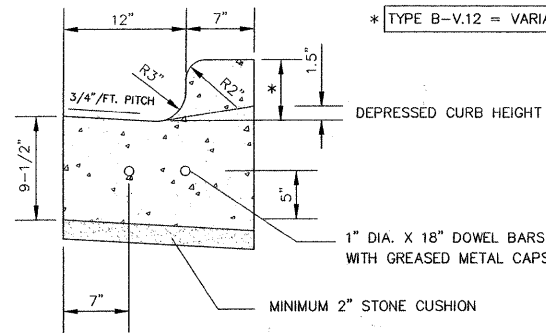
NOTES:

1" PREFORMED EXPANSION MOLDING SHALL BE PLACED WITH TWO SMOOTH 1" DIA. DOWEL BARS WITH GREASED CAPS AT ALL POINTS OF CURVATURE AND CORNERS.

CONTRACTION JOINTS SHALL BE SAW CUT OR TOOLED TO A DEPTH OF 2" @ 15' MINIMUM SPACING. SAW CUT CONTRACTION JOINTS SHALL BE DONE WITHIN 24 HR.. ALL CONTRACTION JOINTS SHALL BE SEALED WITH AN IDOT APPROVED JOINT SEALANT.

AN IDOT APPROVED CURING COMPOUND SHALL BE USED ON ALL PROPOSED CONCRETE CURB AND GUTTER.

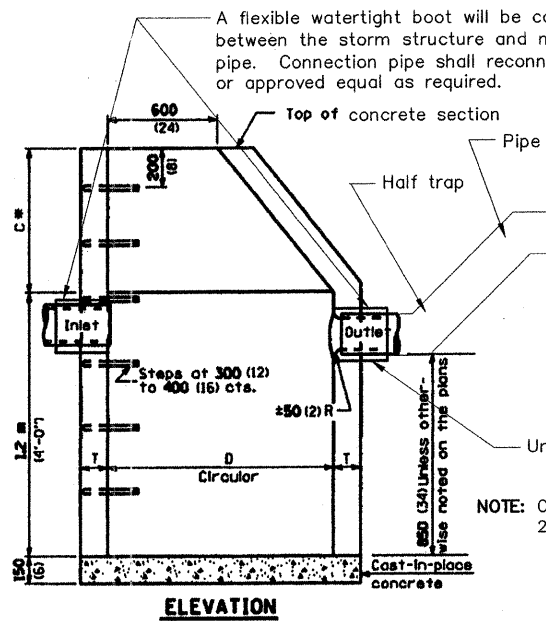
3/4" TIE ANCHOR BARS SHALL BE INSTALLED IN THE ENDS OF EXISTING CURB AND GUTTER TO TIE THE NEW CURB TO THE EXISTING. TIE ANCHOR BARS WILL NOT BE PAID FOR SEPARATELY AND INCLUDED IN THE COST OF THE COMBINATION CONCRETE CURB & GUTTER.



EXPANSION JOINT DETAIL

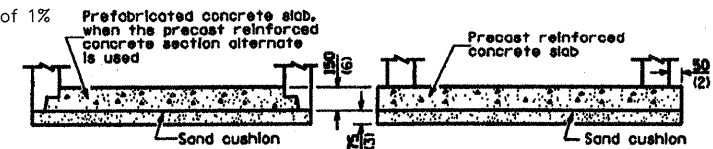
COMBINATION CONCRETE CURB AND GUTTER, TYPE B-V.12

* TYPE B-V.12 = VARIABLE HEIGHT CURB VARIES FROM 4" TO 6"



ELEVATION

CATCH BASIN, TYPE A, SPECIAL



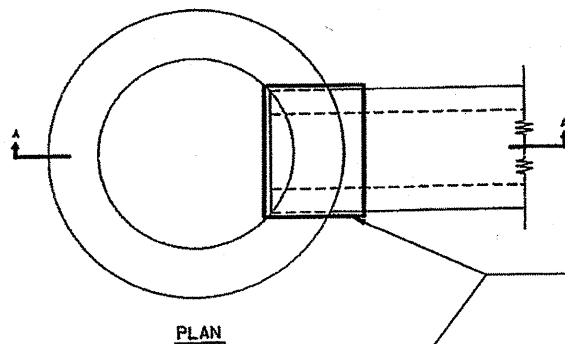
ALTERNATE BOTTOM SLAB

ALTERNATE MATERIALS FOR WALLS	D	C	T (min.)
Precast Reinforced Concrete Section	1.2 m (4'-0")	750 (30)	100 (4)
Cast-in-place Concrete	1.5 m (5'-0")	1.15 m (3'-9")	125 (5)

GENERAL NOTES

All catch basins shall be 1.2m (4'-0") in diameter unless otherwise noted on the plans.
 *Dimension C for precast reinforced concrete section may vary from the dimension given to plus 150mm (6").
 See Standard IDOT 602601 for optional precast reinforced concrete flat slab top.
 See Standard IDOT 602701 for details of steps.
 All dimensions are in millimeters (inches) unless otherwise shown.

CATCH BASIN, TYPE C, SPECIAL

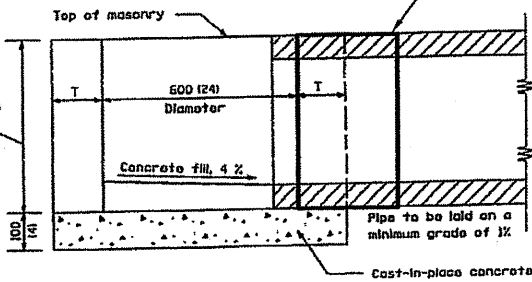


PLAN

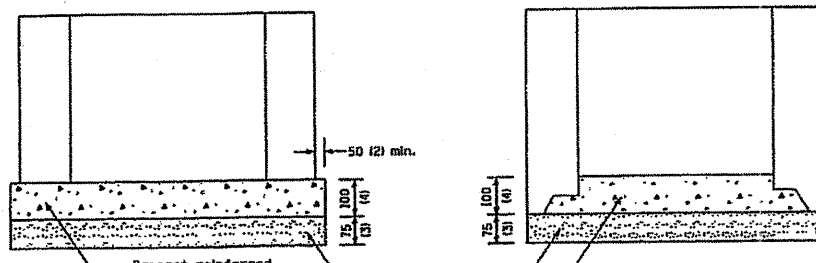
TOP OF PRECAST STRUCTURE

ALTERNATE MATERIALS FOR WALLS	T
BRIER MASONRY	200 (8)
CAST-IN-PLACE CONCRETE	150 (6)
CONCRETE MASONRY UNIT	125 (5)
PRECAST REINFORCED CONCRETE SECTION	75 (3)

A flexible watertight boot will be cast in the inlet at fabrication to be used between the storm structure and new PVC (SDR 26) ASTM D-2241, 8" Dia. connecting pipe. Connection pipe shall reconnect to existing sewer pipes using a "Band-Seal" or approved equal as required.



SECTION A-A



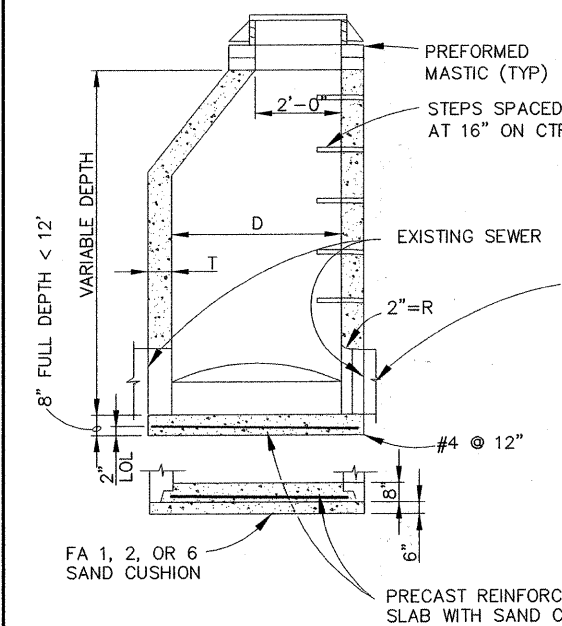
ALTERNATE METHODS

All dimensions are in millimeters (inches) unless otherwise shown.

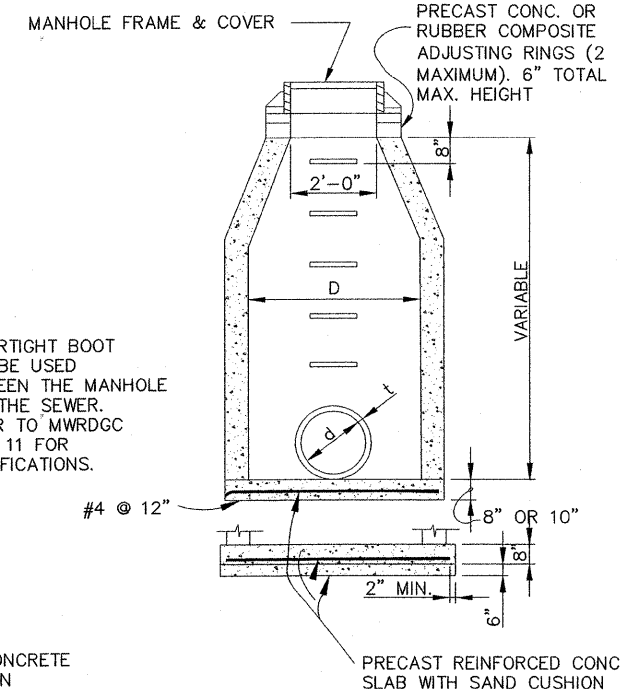
INLET, TYPE A, SPECIAL

NOTES:

PROVIDE CA-6 AGGREGATE BACKFILL AROUND MANHOLE TO SUBGRADE ELEVATION IN PAVED AREAS. LIFT HOLES ON MANHOLES TO BE SEALED WITH CONCRETE PLUG AND MASTIC



SECTION-ECCENTRIC



SECTION-CONCENTRIC

FOR DIAMETER, D= 4 ft. THICKNESS, T= 5 in.
 5 ft. 6 in.
 6 ft. 6 in.

MANHOLE, TYPE A, SPECIAL

FILE NAME = FAU 1447 (16TH STREET)-
 (FROM LOMBARD AVENUE TO CENTRAL AVENUE)
 RESURFACING

USER NAME =
 PLOT SCALE =
 PLOT DATE =

DESIGNED - AMS
 DRAWN - JFP
 CHECKED - TPG
 DATE - 3/11

REVISED - AMS 4-7-11
 REVISED -
 REVISED -
 REVISED -

STATE OF ILLINOIS
 DEPARTMENT OF TRANSPORTATION

SPECIAL PROJECT DETAILS

SCALE: NONE SHEET NO. OF SHEETS STA. TO STA.

Frank Novotny & Associates, Inc.
 825 Midway Drive • Willowbrook, IL • 60527 • Telephone: (630) 887-8640 • Fax: (630) 887-0137
 ILLINOIS PROFESSIONAL DESIGN FIRM NO. 194-000938

F.A.U. RTE.	SECTION	COUNTY	TOTAL SHEETS	SHEET NO.
1447	11-00213-00-RS	COOK	25	6

CONTRACT NO. 63607
 FED. ROAD DIST. NO. ILLINOIS FED. AID PROJECT HPP-3045(003)