

F.A.U. RTE.	SECTION	COUNTY	TOTAL SHEETS	SHEET NO.
1504	94-00302-00-FP	ILLINOIS	240	1
CONTRACT NO. 63609				

STATE OF ILLINOIS
DEPARTMENT OF TRANSPORTATION
DIVISION OF HIGHWAYS

**PLANS FOR PROPOSED
FEDERAL AID HIGHWAY**

F.A.U. 1504 (C.H. 35) (55TH STREET)
FROM WILLIAMS ST. TO HOLMES AVE.

REHABILITATION / RESURFACING AND INTERSECTION MODERNIZATION

SECTION NO.: 94-00302-00-FP
PROJECT NO.: CMM-HPP-0912(002)
JOB NO.: C-91-285-07

DU PAGE COUNTY

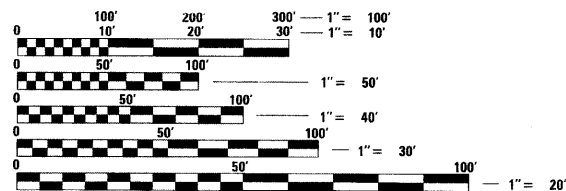
FOR INDEX OF SHEETS, SEE SHEET NO. 2.

TRAFFIC DATA - C.H. 35 (55TH ST.)
POSTED SPEED: 35 MPH
DESIGN SPEED: 35 MPH
CURRENT ADT (2010): 20,700 VPD
DESIGN ADT (2030): 33,120 VPD

TRAFFIC DATA - CASS AVE.
POSTED SPEED: 35 MPH
DESIGN SPEED: 35 MPH
CURRENT ADT (2010): 16,700 VPD
DESIGN ADT (2030): 18,100 VPD

TRAFFIC DATA - CLARENDON HILLS RD.
POSTED SPEED: 30 MPH
DESIGN SPEED: 30 MPH
CURRENT ADT (2010): 4,200 VPD
DESIGN ADT (2030): 4,600 VPD

DESIGN DESIGNATION
C.H. 35 (55TH ST.) - MINOR ARTERIAL
CASS AVE. - MINOR ARTERIAL
CLARENDON HILLS RD. - MINOR ARTERIAL



FULL SIZE PLANS HAVE BEEN PREPARED USING STANDARD ENGINEERING SCALES. REDUCED SIZED PLANS WILL NOT CONFORM TO STANDARD SCALES. IN MAKING MEASUREMENTS ON REDUCED PLANS, THE ABOVE SCALES MAY BE USED.

J.U.L.I.E.
JOINT UTILITY LOCATION INFORMATION FOR EXCAVATION
1-800-892-0123
OR 811

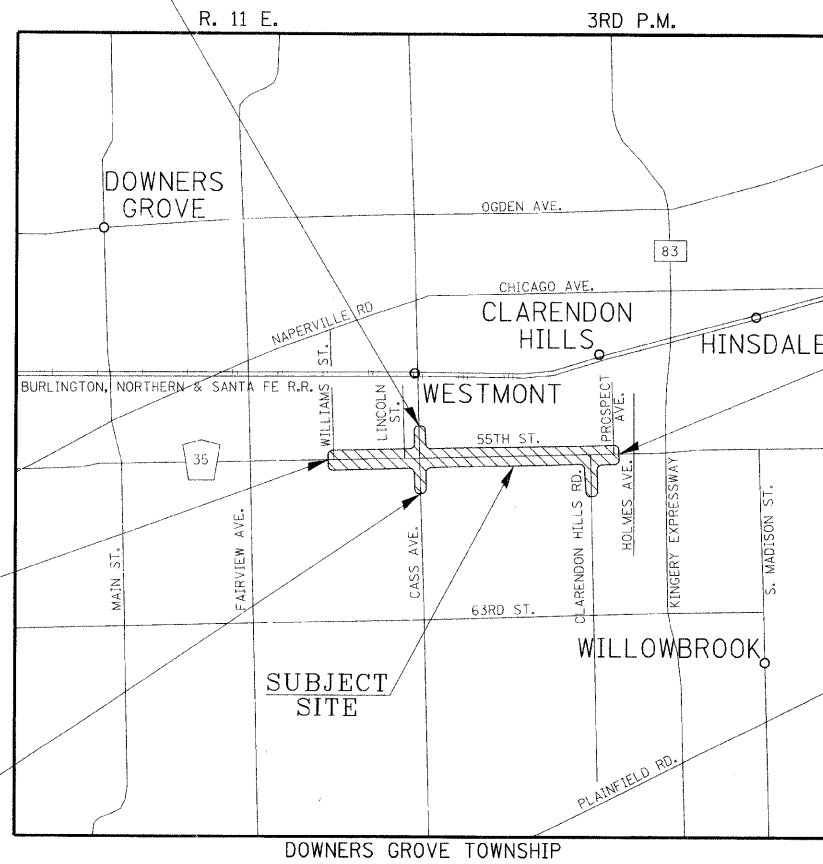
PROJECT ENGINEER: CRAIG YOUNG
PROJECT MANAGER: GREGG MOUNTS
CONTRACT NO. 63609

Hutchinson Engineering, Inc.
Jacksonville - Since 1945 - Shorewood
2011 JOB# 2791

CASS AVE. (NORTH LEG)
END CONSTRUCTION
STATION 203+29.07

C.H. 35 (55TH ST.)
PROJECT BEGINS
STATION 9+50.00

CASS AVE. (SOUTH LEG)
BEGIN CONSTRUCTION
STATION 193+79.86



C.H. 35 (55TH ST.)
PROJECT ENDS
STATION 101+33.03



CRAIG A. YOUNG
REGISTERED PROFESSIONAL ENGINEER
OF ILLINOIS
EXPIRES 11/30/11
ENGINEERS SEAL



STATE OF ILLINOIS
DEPARTMENT OF TRANSPORTATION
DIVISION OF HIGHWAYS

APPROVED _____ 20__
DU PAGE COUNTY ENGINEER

PASSED MAY 27 20__
DISTRICT 1 ENGINEER OF LOCAL ROADS & STREETS

RELEASING FOR BID
BASED ON LIMITED
REVIEW MAY 3 20__

Jean M. C. [Signature]
DEPUTY DIRECTOR OF HIGHWAYS, REGION 1 ENGINEER

**PRINTED BY THE AUTHORITY
OF THE STATE OF ILLINOIS**

PROGRAM AND OFFICE ENGINEER: CHARLES F. RIDDLER, P.E. (847) 705-4406, SCHAUMBURG

GROSS LENGTH OF PROJECT = 9135.00 FEET = 1.730 MILES
NET LENGTH OF PROJECT = 9135.00 FEET = 1.730 MILES