

COUNTY HIGHWAY	F.A.P. RTE.	SECTION	COUNTY	TOTAL SHEETS	SHEET NO.
4	364	07-00184-12-CH	DUPAGE	49	1
			ILLINOIS	CONTRACT NO. 63611	

D-91-722-09



**STATE OF ILLINOIS**  
**DEPARTMENT OF TRANSPORTATION**  
**DIVISION OF HIGHWAYS**  
**PLANS FOR PROPOSED**  
**FEDERAL AID HIGHWAY**  
**FAP 364 ROSELLE ROAD (CH4)**  
**AT WALNUT STREET**  
**INTERSECTION IMPROVEMENT**  
**SECTION: 07-00184-12-CH**  
**PROJECT NO. HSIP-9003(838)**  
**DUPAGE COUNTY**  
**C-91-722-09**

FOR INDEX OF SHEETS, SEE SHEET NO. 2  
 FOR LIST OF HIGHWAY STANDARDS, SEE SHEET NO. 2  
 FOR SUMMARY OF QUANTITIES, SEE SHEET NO. 4

**DESIGN DESIGNATION**

**ROSELLE ROAD**  
 FUNCTION CLASSIFICATION: SRA (URBAN MINOR ARTERIAL)  
 DESIGN SPEED = 40 MPH  
 POST SPEED = 35 MPH

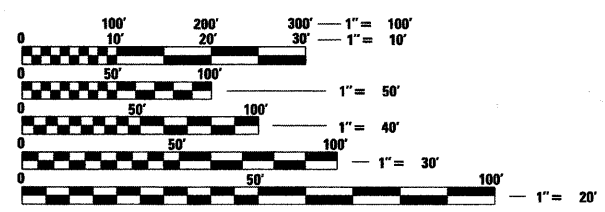
**WALNUT ST/WALNUT CT**  
 FUNCTION CLASSIFICATION: URBAN COLLECTOR/LOCAL RESIDENTIAL  
 DESIGN SPEED = 30 MPH  
 POST SPEED = 30 MPH

**TRAFFIC DATA**

**ROSELLE RD**  
 2010 ADT = 23,100  
 2050 ADT = 25,500

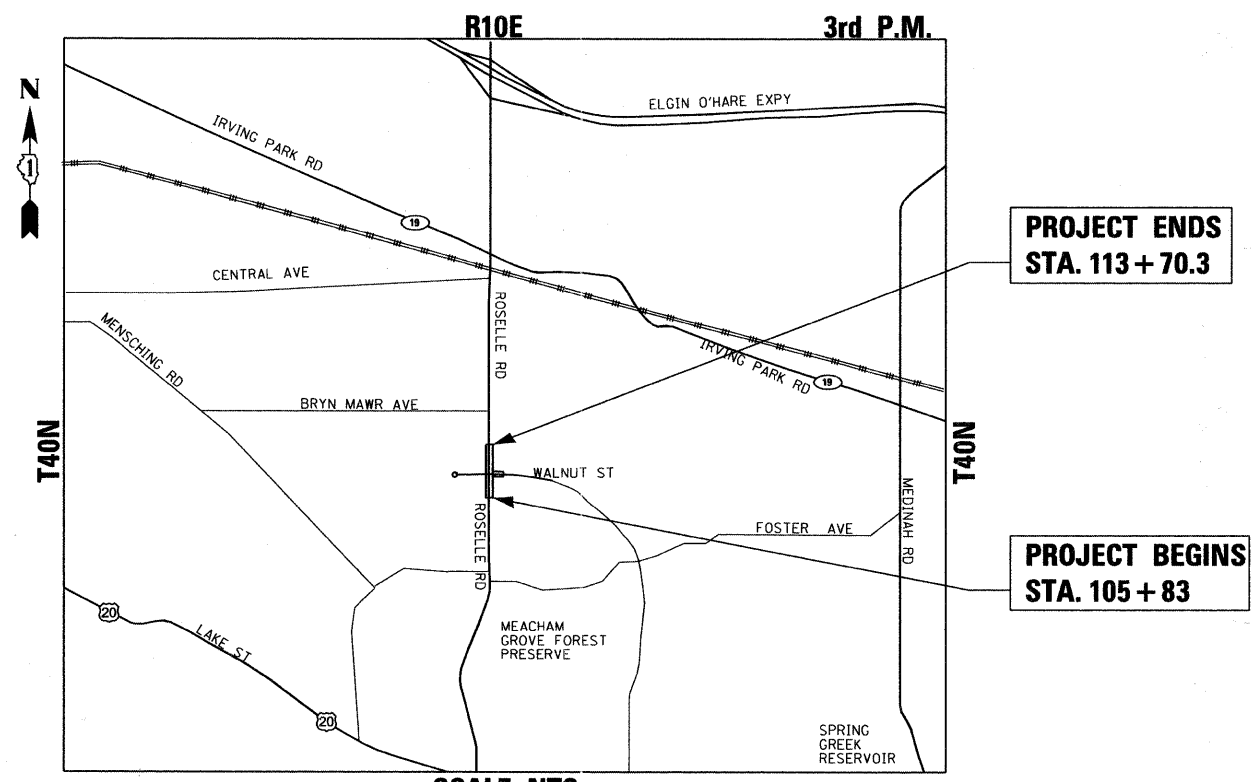
**WALNUT STREET**  
 2010 ADT = 1830  
 2050 ADT = 2,050

IMPROVEMENT LOCATED WITHIN  
 VILLAGE OF ROSELLE



FULL SIZE PLANS HAVE BEEN PREPARED USING STANDARD ENGINEERING SCALES. REDUCED SIZED PLANS WILL NOT CONFORM TO STANDARD SCALES. IN MAKING MEASUREMENTS ON REDUCED PLANS, THE ABOVE SCALES MAY BE USED.

J.U.L.I.E.  
 JOINT UTILITY LOCATION INFORMATION FOR EXCAVATION  
 1-800-892-0123  
 OR 811



GROSS LENGTH OF PROJECT = 787.3 FT = 0.15 MILE  
 NET LENGTH OF PROJECT = 787.3 FT = 0.15 MILE

PROJECT ENDS  
 STA. 113 + 70.3

PROJECT BEGINS  
 STA. 105 + 83

STATE OF ILLINOIS  
 DEPARTMENT OF TRANSPORTATION  
 DIVISION OF HIGHWAYS

APPROVED 5-18 2011  
*Charles F. Riddle*  
 COUNTY OF DUPAGE, COUNTY ENGINEER

PASSED May 29 2011  
*Christy A. Heston*  
 DISTRICT 1 ENGINEER OF LOCAL ROAD & STREETS

RELEASING FOR BID  
 BASED ON  
 LIMITED REVIEW MAY 25 2011  
*Diane M. O'Keefe*  
 DEPUTY DIRECTOR OF HIGHWAYS, REGION 1 ENGINEER

**PRINTED BY THE AUTHORITY  
 OF THE STATE OF ILLINOIS**

200 22ND Street, Suite 216, Lombard, IL 60148  
 630.705.0110 voice, 630.839.2566 fax  
 www.mps-il.com

MILLENNIA PROFESSIONAL SERVICES

PROGRAM AND OFFICE ENGINEER: CHARLES F. RIDDLE, P.E. (847) 705-4406, SCHAUBURG, IL

MILLENNIA PROFESSIONAL SERVICES  
 THOMAS V. NGO, P.E.  
 # 062-058379

*Thomas V. Ngo*  
 DATE: 5/18/2011  
 SIGNATURE AND SEAL APPLIES TO DRWG.

CONTRACT NO. 63611