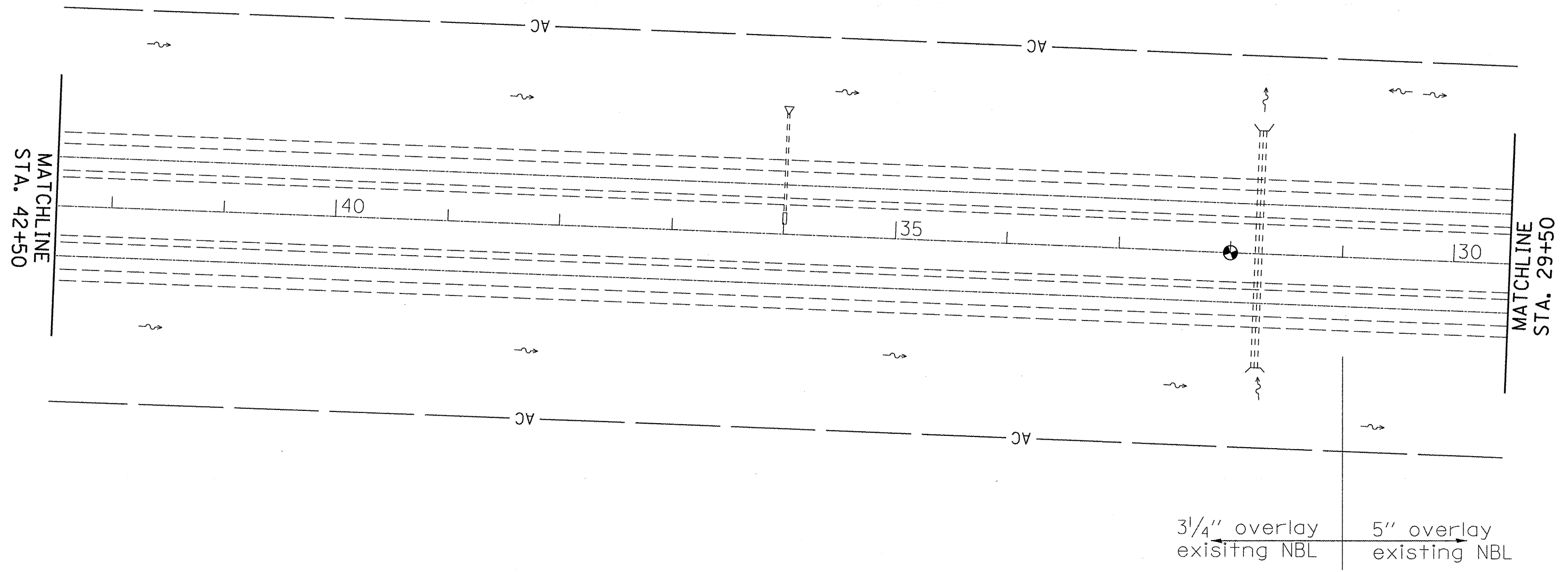
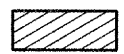
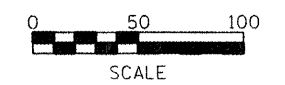




5" overlay
existing SBL



 GRADING & SHAPING DITCHES



PLOT DATE = 5/11/2011
FILE NAME = general.dgn
PLOT SCALE = 90.9091' / in.
USER NAME = AdadeSA

FILE NAME = general.dgn	USER NAME = AdadeSA	DESIGNED -	REVISED -	STATE OF ILLINOIS DEPARTMENT OF TRANSPORTATION	PLAN SHEET			F.A.P. RTE. 318	SECTION (72-7)RS-1	COUNTY PEORIA	TOTAL SHEETS 32	SHEET NO. 19
	PLOT SCALE = 90.9091' / in.	DRAWN -	REVISED -		SCALE:	SHEET NO.	OF	SHEETS	STA.	TO STA.	CONTRACT NO. 68673	
	PLOT DATE = 5/11/2011	CHECKED -	REVISED -								ILLINOIS FED. AID PROJECT	
		DATE -	REVISED -									