

SB IL 6 (RAMP B) TO US 150 CLOSURE WITH DETOUR.

General Notes

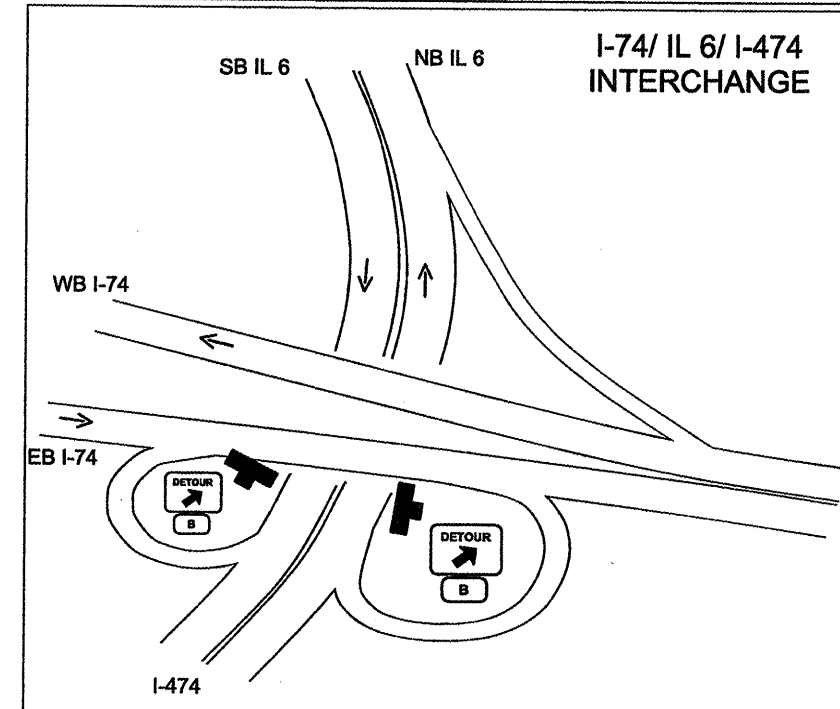
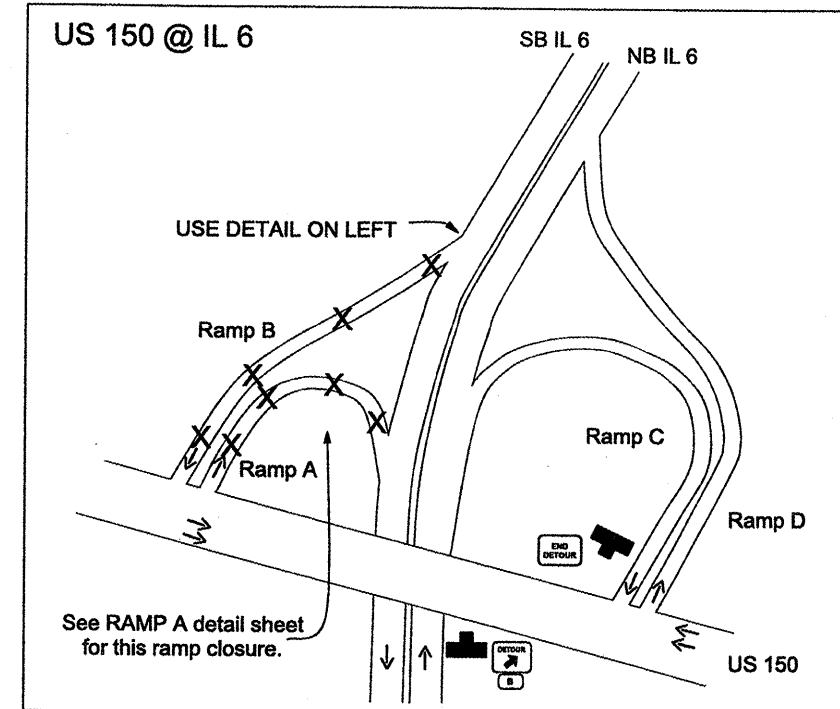
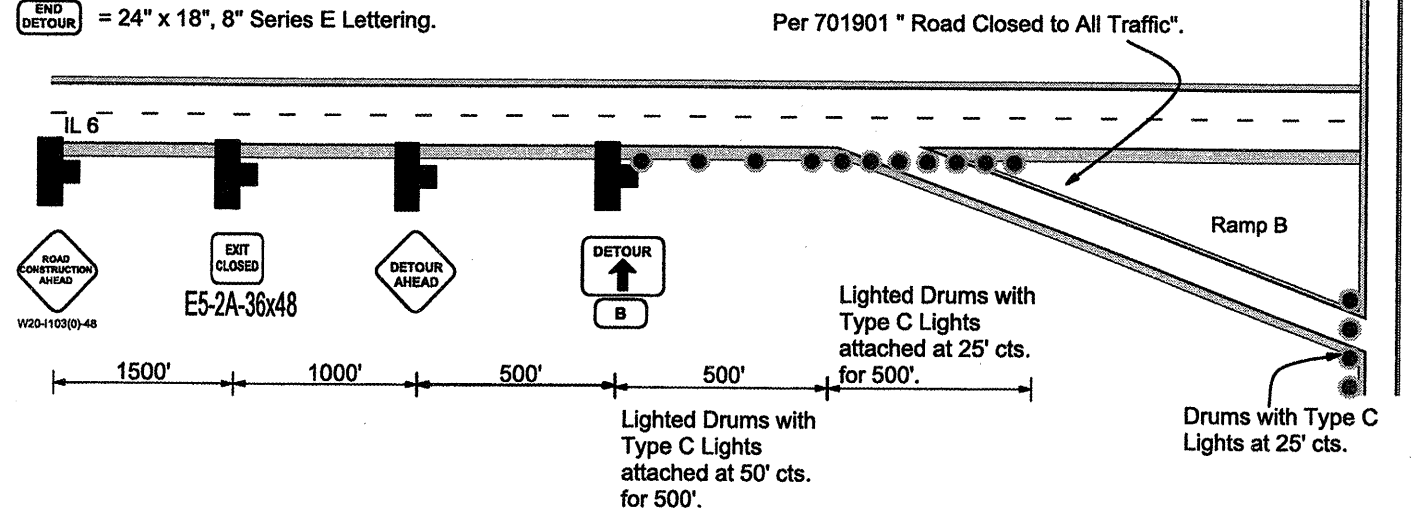
- 1) All signs shall be black on orange with black border unless shown otherwise.
- 2) Any additional signs required shall be paid according to Article 109.04.
- 3) Lights on devices only required before sunrise or after sunset.
- 4) I-474 State U-turn to be barreled off to prevent public U-turns.

A = 15" x 21", 12" Series E Lettering.

DETOUR (with arrow) = M4-9 30" x 24"- arrow adjusted per drawing.

RAMP CLOSED AHEAD = 48"

END DETOUR = 24" x 18", 8" Series E Lettering.



FILE NAME = general.dgn

USER NAME = AdodeSA
 PLOT SCALE = 400.0001' / in.
 PLOT DATE = 5/12/2011

DESIGNED -	REVISD -
DRAWN -	REVISD -
CHECKED -	REVISD -
DATE -	REVISD -

**STATE OF ILLINOIS
 DEPARTMENT OF TRANSPORTATION**

TRAFFIC CONTROL PLAN DETAIL

SCALE: SHEET NO. OF SHEETS STA. TO STA.

F.A.P. RTE. 318	SECTION (72-7)RS-1	COUNTY PEORIA	TOTAL SHEETS 32	SHEET NO. 24
CONTRACT NO. 68673				
ILLINOIS FED. AID PROJECT				