

## NB IL 6 (RAMP C) TO US 150 CLOSURE WITH DETOUR.

### General Notes

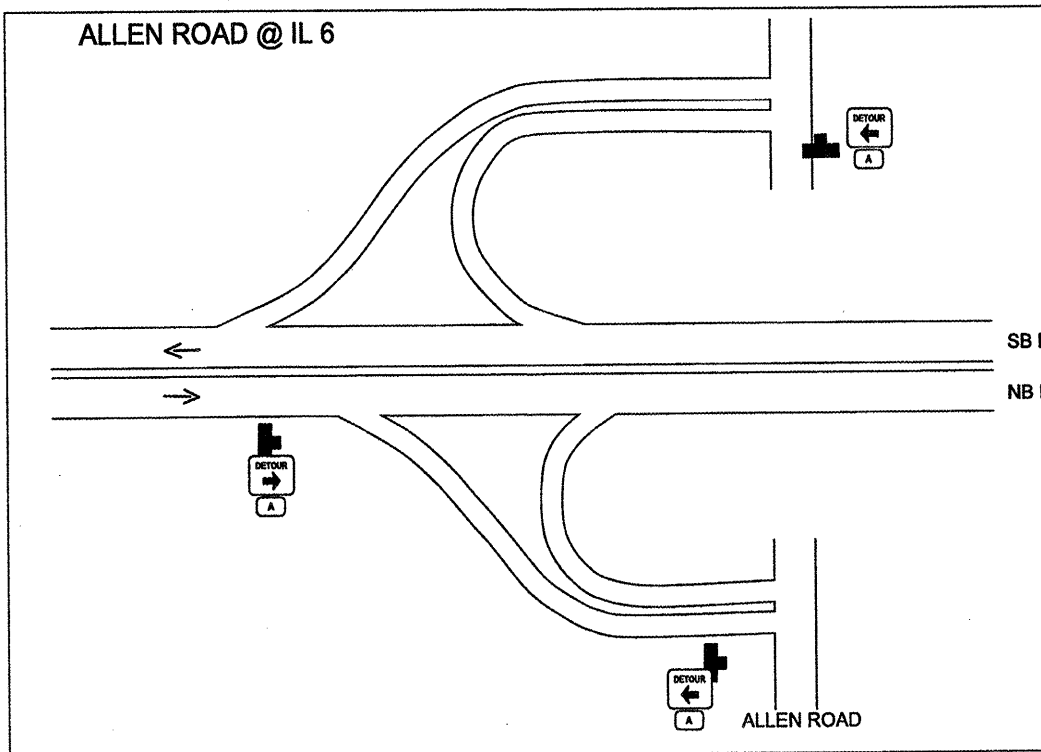
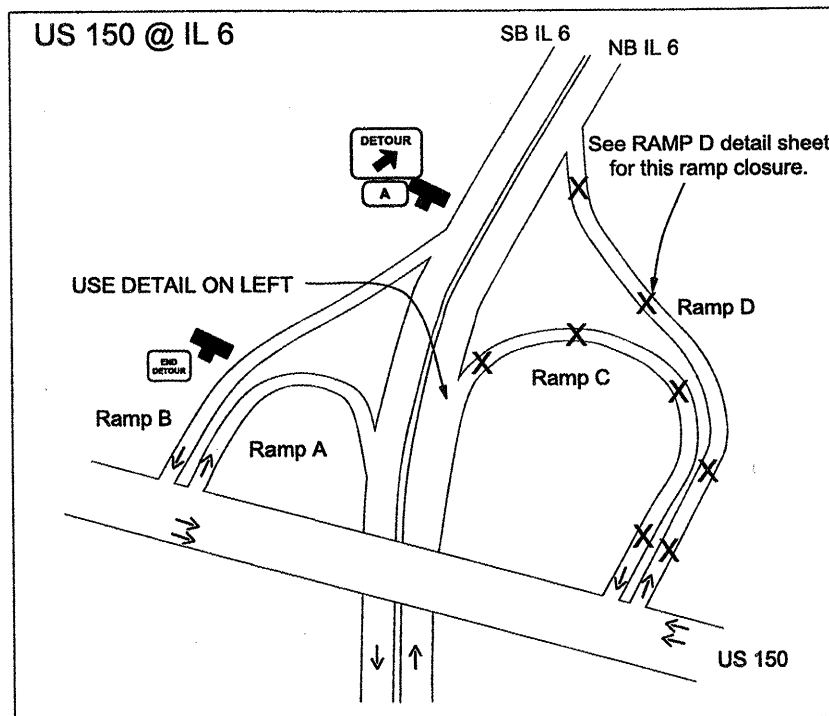
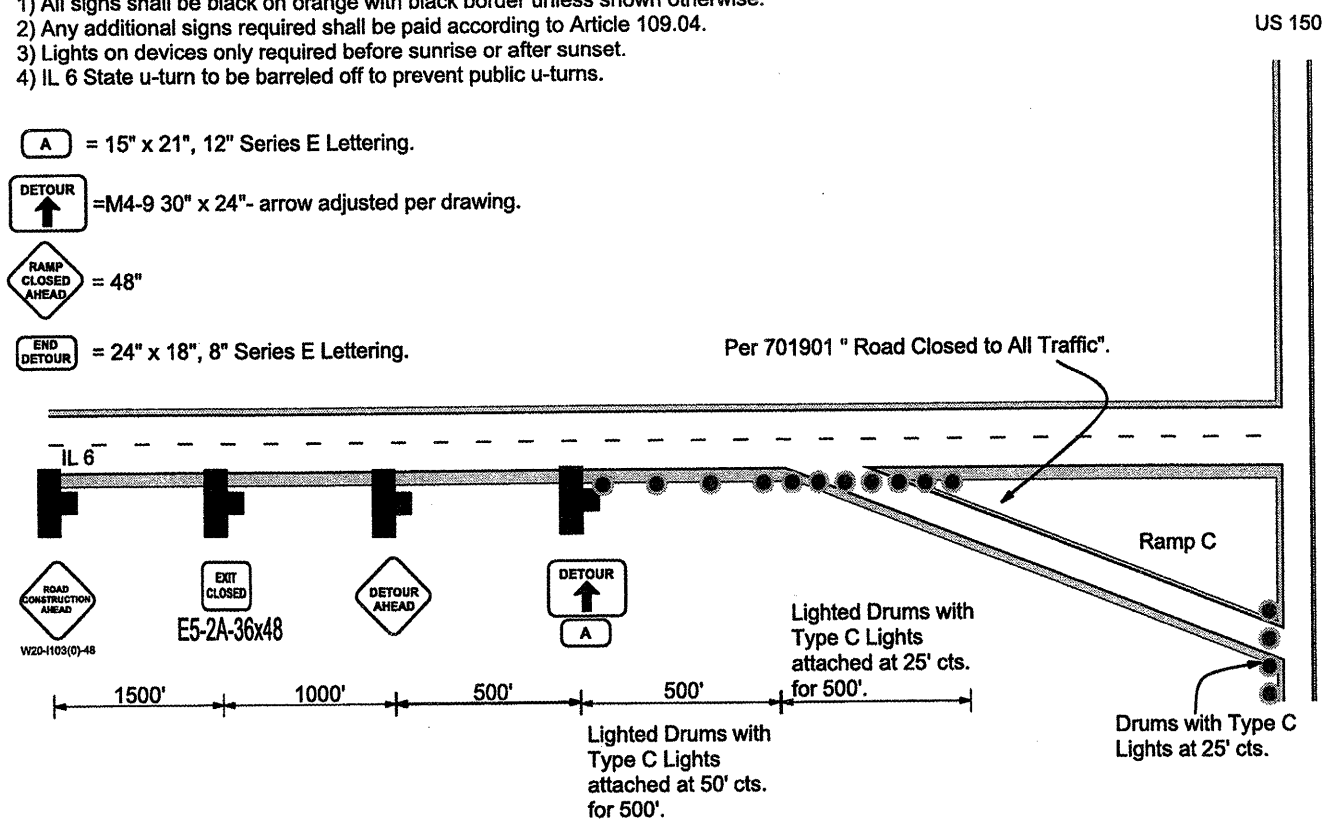
- 1) All signs shall be black on orange with black border unless shown otherwise.
- 2) Any additional signs required shall be paid according to Article 109.04.
- 3) Lights on devices only required before sunrise or after sunset.
- 4) IL 6 State u-turn to be barreled off to prevent public u-turns.

**A** = 15" x 21", 12" Series E Lettering.

**DETOUR** (with arrow) = M4-9 30" x 24" - arrow adjusted per drawing.

**RAMP CLOSED AHEAD** = 48"

**END DETOUR** = 24" x 18", 8" Series E Lettering.



FILE NAME = general.dgn	USER NAME = AdodeSA	DESIGNED -	REVISED -
		DRAWN -	REVISED -
	PLOT SCALE = 400.0001' / in.	CHECKED -	REVISED -
	PLOT DATE = 5/12/2011	DATE -	REVISED -

**STATE OF ILLINOIS  
DEPARTMENT OF TRANSPORTATION**

### TRAFFIC CONTROL PLAN DETAIL

SCALE: SHEET NO. OF SHEETS STA. TO STA.

F.A.P. RTE. = 318	SECTION = (72-7)RS-1	COUNTY = PEORIA	TOTAL SHEETS = 32	SHEET NO. = 25
CONTRACT NO. 68673				
ILLINOIS FED. AID PROJECT				