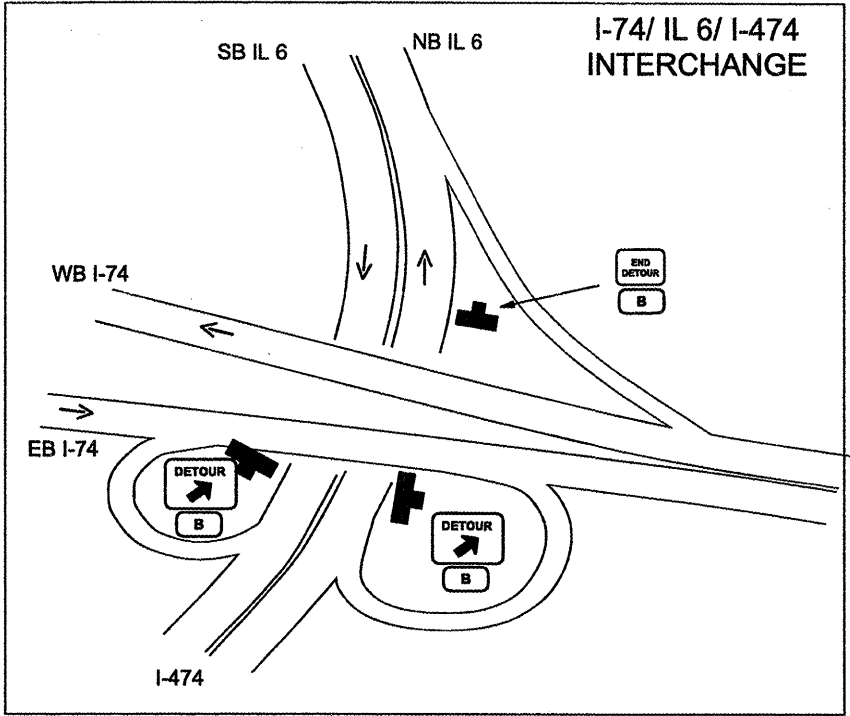
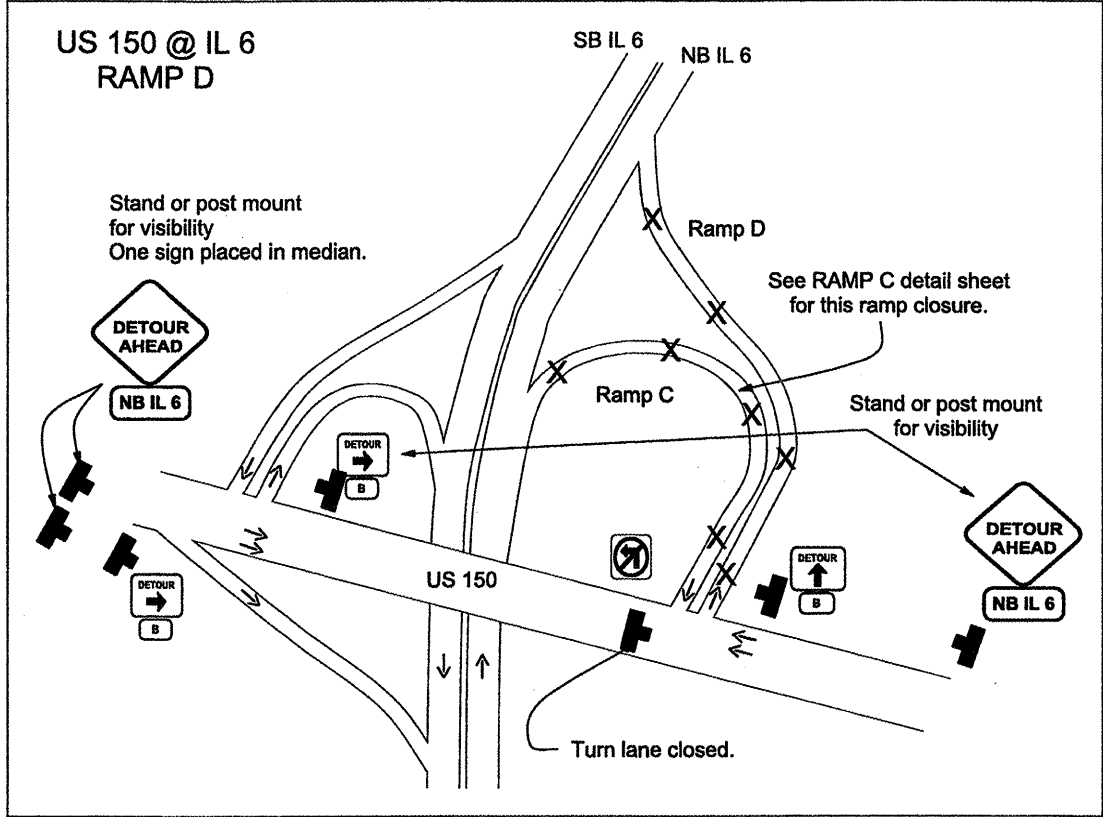


US 150 (RAMP D) TO NB IL 6 CLOSURE WITH DETOUR.



General Notes

- 1) Ramps C & D shall be closed simultaneously. One Changeable Message Sign shall be utilized 3 days in advance of each ramp closure- one on IL 6 and one on WB US 150. Changeable message signs shall be utilized during the closure.
- 2) TIME RESTRICTIONS: Complete closures are allowed on Thursday from 6:00 pm to 6:00 am & from Friday 6:00 pm to Monday 6:00 am.
- 3) The advanced signs on WB US 150 shall be post or stand mounted for better visibility.
- 4) Barrels shall be placed on IL 6 at the State u-turn to prevent motorist from doing a u-turn.
- 5) Ramp entrance shall be closed per standard 701901 "ROAD CLOSED TO ALL TRAFFIC."
- 6) Devices @ 25' cts. to delineate closed turn lanes of affected ramps.

Additional Changeable Message Board required on IL 91 to alert motorist of NB 6 Ramp closure.

FILE NAME : general.dgn	USER NAME : AdodeSA	DESIGNED -	REVISED -	STATE OF ILLINOIS DEPARTMENT OF TRANSPORTATION	TRAFFIC CONTROL PLAN DETAIL	F.A.P. RTE. 318	SECTION (72-7)RS-1	COUNTY PEORIA	TOTAL SHEETS 32	SHEET NO. 26
	PLOT SCALE = 400.0001' / 1"	CHECKED -	REVISED -			SCALE:	SHEET NO. OF SHEETS	STA. TO STA.	ILLINOIS FED. AID PROJECT CONTRACT NO. 68673	
PLOT DATE = 5/12/2011	DATE -	REVISED -	REVISED -							