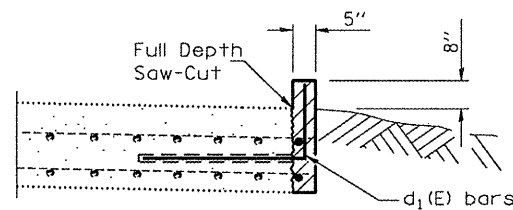
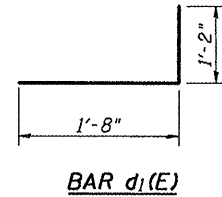
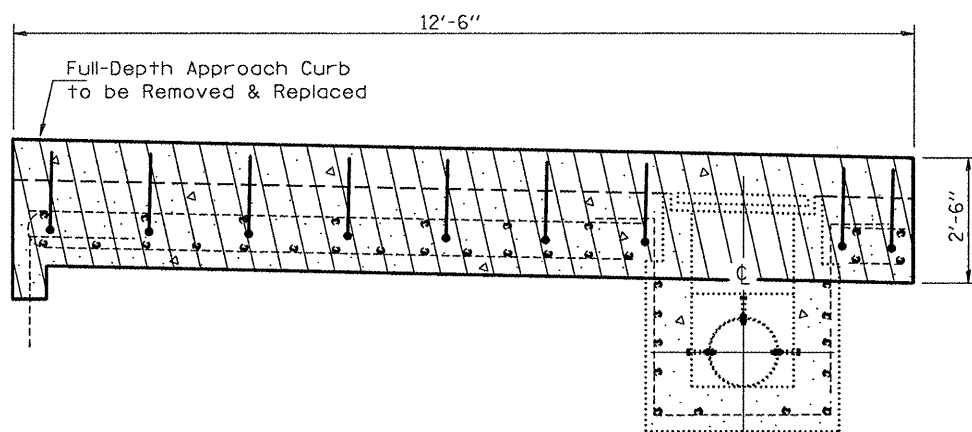


**EXISTING
DETAIL PLAN**

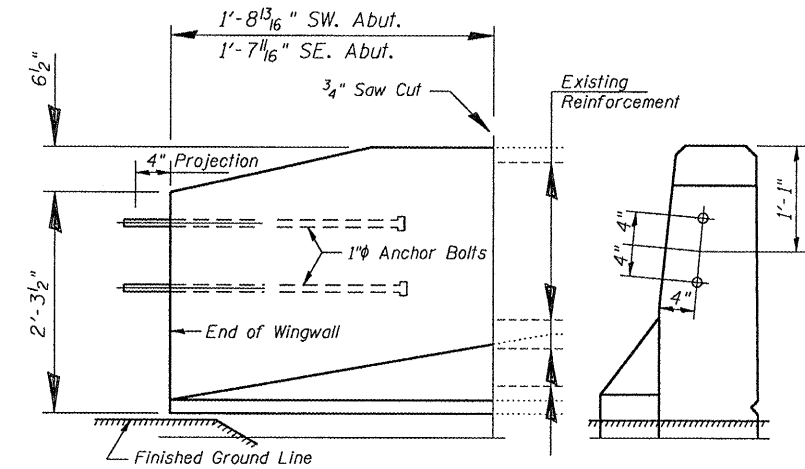


SECTION C-C

Hatched area indicate Concrete Removal and Concrete Superstructure. New concrete curb shall be attached to the existing approach slab with bent reinforcement bars, drilled and epoxied on 12" cts. into the saw-cut vertical face of the slab as shown.



SECTION A-A

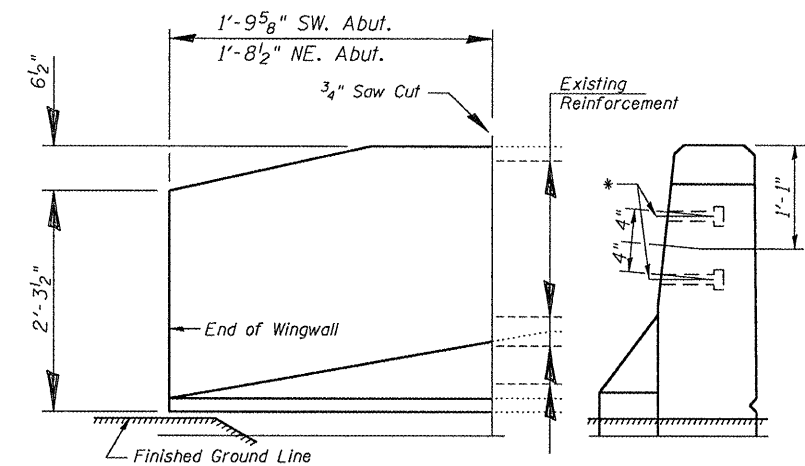


ELEVATION

END VIEW

SOUTH PARAPET AT EAST END

NOTE: To be used with Traffic Barrier Terminal Type 5 (see Standard 631026)



ELEVATION

END VIEW

NORTH PARAPET AT EAST END

SOUTH PARAPET AT WEST END

*NOTE: Existing steel rail to be attached to new concrete. Cost included with Concrete Superstructure.

BILL OF MATERIAL

Bar	No.	Size	Length	Shape
d ₁ (E)	12	#4	2'-10"	└┘
Concrete Removal			Cu. Yd.	0.5
Concrete Superstructure			Cu. Yd.	0.5
Reinforcement Bars, Epoxy Coated			Pound	23

S:\GEN/DRAFT/STD&PLNS/SQUAD BRIDGES/BRIDGE CONTRACTS/JOINTS/68685 SNOT2-0154 US150 ovr CNRR.dgn

FILE NAME =	USER NAME = #USER#	DESIGNED - CEJ	REVISED -
#FILE#		DRAWN - CEJ	REVISED -
	PLOT SCALE = #SCALE#	CHECKED -	REVISED -
	PLOT DATE = #DATE#	DATE - 04-14-2011	REVISED -

**STATE OF ILLINOIS
DEPARTMENT OF TRANSPORTATION**

**REPAIR DETAILS
STRUCTURE NO. 072-0154**

SCALE: SHEET NO. 3 OF 5 SHEETS STA. TO STA.

F.A.P. RTE.	SECTION	COUNTY	TOTAL SHEETS	SHEET NO.
317	[[16VB]BR1]	PEORIA	14	12
JOINT REPLACEMENT W/STRIP SEALS			CONTRACT NO. 68685	
ILLINOIS FED. AID PROJECT				