

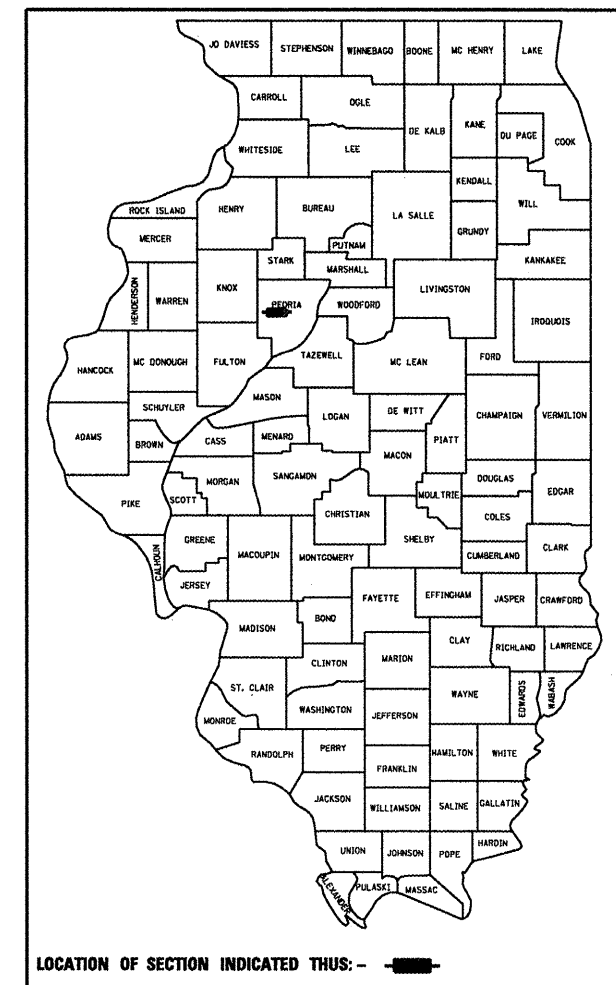
DESIGNER: CLARK JONES
PHONE: (309)671-3452

PROJECT ENGINEER: JIM MILLER
PHONE: (309)671-3451

STATE OF ILLINOIS
DEPARTMENT OF TRANSPORTATION
DIVISION OF HIGHWAYS
**PROPOSED
HIGHWAY PLANS**

F.A.P. RTE.	SECTION	COUNTY	TOTAL SHEETS	SHEET NO.
317	[(16VB)BR]	PEORIA	14	1
FED. ROAD DIST. NO. 4		ILLINOIS	CONTRACT NO. 68685	

D-94-016-07

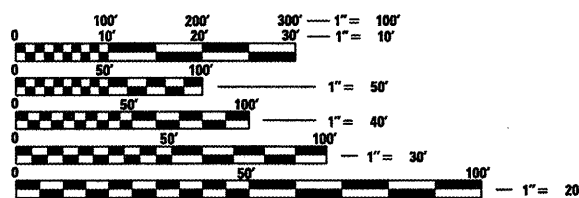


INDEX OF SHEETS:

1. COVER SHEET
2. COMMITMENTS & GENERAL NOTES
3. SUMMARY OF QUANTITIES
4. SCHEDULE OF QUANTITIES
- 5-6. GENERAL LAYOUT
- 7-9. TRAFFIC CONTROL
- 10-14. REPAIR DETAILS

STANDARDS:

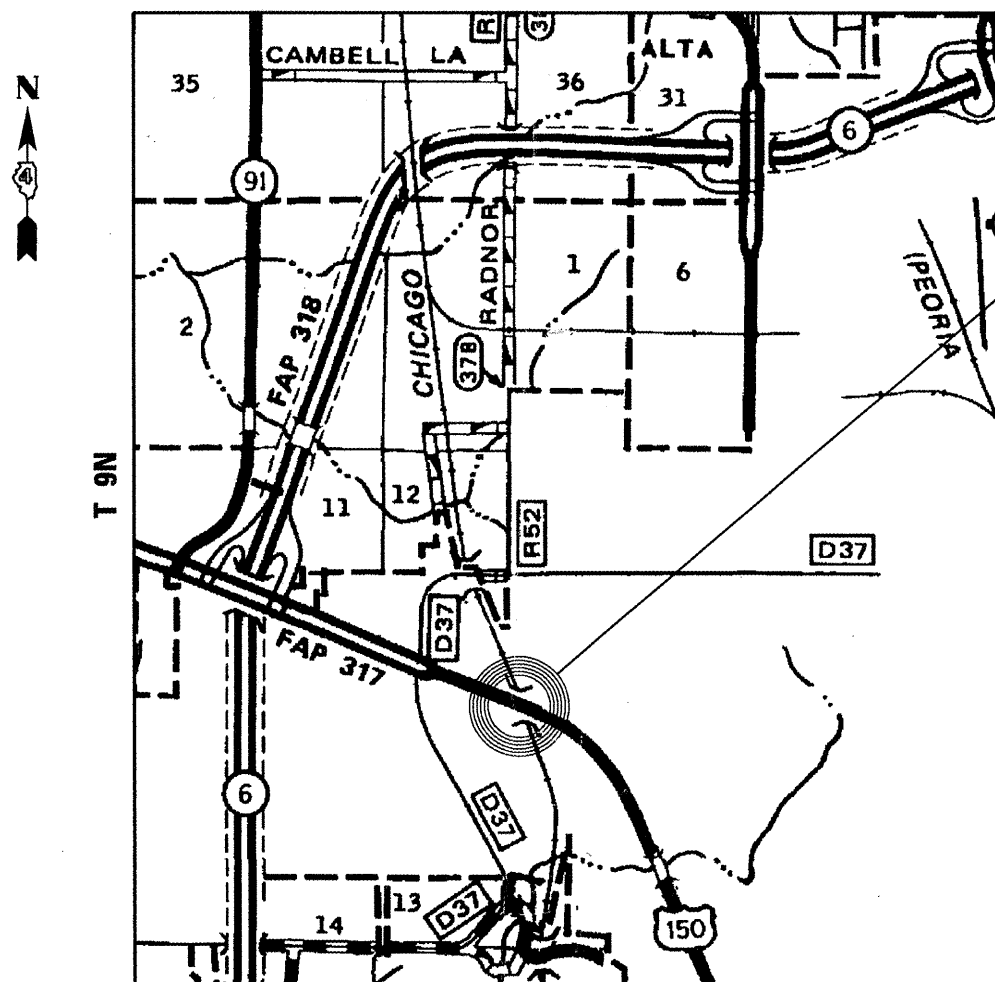
- 630001-09 701901-01
631026-05 704001-06
701101-02 780001-02
701106-02



FULL SIZE PLANS HAVE BEEN PREPARED USING STANDARD ENGINEERING SCALES. REDUCED SIZED PLANS WILL NOT CONFORM TO STANDARD SCALES. IN MAKING MEASUREMENTS ON REDUCED PLANS, THE ABOVE SCALES MAY BE USED.

J.U.L.I.E.
JOINT UTILITY LOCATION INFORMATION FOR EXCAVATION
1-800-892-0123
OR 811

FAP 317 (US 150)
SECTION [(16VB)BR]
BRIDGE REPAIRS
PEORIA COUNTY
C-94-017-07
PROJECT NHF-0317(090)
R 7E



LOCATION MAP

SN.072-0154

PROJECT CONSISTS OF JOINT REPLACEMENT WITH STRIP SEAL, AND NW. CURB SECTION REMOVED & REPLACED ON STRUCTURE CARRYING US150 (WAR MEMORIAL DR.) OVER UPRR CO, (SN. 072-0154) IN PEORIA.

STATE OF ILLINOIS
DEPARTMENT OF TRANSPORTATION
DIVISION OF HIGHWAYS

SUBMITTED APRIL 26 20 11

[Signature]
DEPUTY DIRECTOR OF HIGHWAYS, REGION ENGINEER

July 1 20 11
Scott E. Stett, P.E.
ENGINEER OF DESIGN AND ENVIRONMENT

July 1 20 11
Christine M. Reed
DIRECTOR OF HIGHWAYS, CHIEF ENGINEER

PRINTED BY THE AUTHORITY
OF THE STATE OF ILLINOIS

COMMITMENTS

No commitments have been made for this project.

GENERAL NOTES

Plan Elevations - U.S.G.S. Mean Sea Level Datum

Use one of the following two options.

1. All elevations shown on the plans are established from U.S.G.S. mean sea level datum.

2. All elevations shown refer to U.S.G.S. datum at mean sea level unless otherwise noted.

Plan dimensions and details relative to existing structure have been taken from existing plans and are subject to nominal construction variations. It shall be the Contractor's responsibility to verify such dimensions and details in the field and make necessary approved adjustments prior to construction or ordering of materials. Such variations shall not be cause for additional compensation for a change in the scope of the work, however, the Contractor will be paid for the quantity actually furnished at the unit price bid for the work.

Damaged or deteriorated reinforcement bars shall be replaced prior to placement of concrete repair.

JOB SPECIFIC NOTES

Prior to any curb or parapet wall removal on the North side of the structure, the City of Peoria Traffic Operations Manager shall be contacted at (309) 494-8893 for temporarily dismantling the attached 2" fiber-optic conduit. Any damage to the conduit, flex tubing, mounting hardware, or internal cable incurred during this operation are the responsibility of the Contractor and shall be corrected at no additional cost to the State. All costs included with Concrete Removal.

All Railing removal, storage, and re-erection necessary to complete the parapet wall rework at joint locations shall be included in cost of CONCRETE REMOVAL

Additional equipment or devices required to complete installation of traffic staging shall be included in cost of TRAFFIC CONTROL SPECIAL. See Special Provisions.

S:/GEN/DRAFT/STD&PLNS/SQIAD BRIDGES/BRIDGE CONTRACTS/JOINTS/68685 SNO72-0154 US150 ovr CNRR.dgn

FILE NAME =	USER NAME = *USER*	DESIGNED - C JONES	REVISED - _____	STATE OF ILLINOIS DEPARTMENT OF TRANSPORTATION	GENERAL NOTES & COMMITMENTS STRUCTURE NO. 072-0154	F.A.P. RTE.	SECTION	COUNTY	TOTAL SHEETS	SHEET NO.	
FILEL		DRAWN - C JONES	REVISED - _____			317	[(16VB)BRJ]	PEORIA	14	2	
	PLOT SCALE = *SCALE*	CHECKED - _____	REVISED - _____			Joint Replacements		CONTRACT NO. 68685			
	PLOT DATE = *DATE*	DATE - _____	REVISED - _____			SCALE: _____	SHEET NO. _____ OF _____ SHEETS	STA. _____ TO STA. _____	ILLINOIS FED. AID PROJECT		

SUMMARY OF QUANTITIES

**80/20 NHS FUNDING-0014
PEORIA COUNTY**

CODE NO.	ITEM	UNIT	URBAN	TOTAL
42001300	PROTECTIVE COAT	SOYD	46	46
50102400	CONCRETE REMOVAL	CUYD	29.5	29.5
50300255	CONCRETE SUPERSTRUCTURE	CUYD	29.5	29.5
50800205	REINFORCEMENT BARS, EPOXY COATED	POUND	3043	3043
50800515	BAR SPLICERS	EACH	48	48
52000110	PREFORMED JOINT STRIP SEAL	FOOT	194	194
67100100	MOBILIZATION	LSUM	1	1
70106800	CHANGEABLE MESSAGE SIGN	CALMO	2	2
* 70300520	PAVEMENT MARKING TAPE, TYPE III, 4"	FOOT	5055	5055
* 70300540	PAVEMENT MARKING TAPE, TYPE III, 6"	FOOT	1025	1025
70301000	WORKZONE PAVEMENT MARKING REMOVAL	SQFT	1685	1685
70400100	TEMPORARY CONCRETE BARRIER	FOOT	925	925
70400200	RELOCATE TEMPORARY CONCRETE BARRIER	FOOT	925	925
* 78005110	EPOXY PAVEMENT MARKING - LINE 4"	FOOT	921	921
78300100	PAVEMENT MARKING REMOVAL	SQFT	307	307
X7010216	TRAFFIC CONTROL AND PROTECTION (SPECIAL)	LSUM	1	1
* X7200201	WIDTH RESTRICTION SIGNING	LSUM	1	1
Z0030240	IMPACT ATTENUATORS, TEMPORARY (NON-REDIRECTIVE), TEST LEVEL 2	EACH	4	4
Z0030340	IMPACT ATTENUATORS, RELOCATE (NON-REDIRECTIVE), TEST LEVEL 2	EACH	4	4
Z0048665	RAILROAD PROTECTIVE LIABILITY INSURANCE	LSUM	1	1
* SPECIALTY ITEM				

S:\GEN\DRAW\STD&PLNS\SOJAD BRIDGES\BRIDGE CONTRACTS\JOINTS\68685 SNOT2-0154 USI50 ovr CNRR.dgn

FILE NAME = SN872-0154 USI50 ovrUPRR.dgn	USER NAME = jonesce	DESIGNED - C JONES	REVISED -	STATE OF ILLINOIS DEPARTMENT OF TRANSPORTATION	SUMMARY OF QUANTITIES STRUCTURE NO. 072-0154	F.A.P. RTE. 317	SECTION [16VB1R]	COUNTY PEORIA	TOTAL SHEETS 14	SHEET NO. 3
PLOT SCALE = 1/32" = 1' / IN.		CHECKED -	REVISED -	SCALE: _____ SHEET NO. _____ OF _____ SHEETS STA. _____ TO STA. _____		Joint Replacements			CONTRACT NO. 68685	
PLOT DATE = 4/27/2011		DATE -	REVISED -			ILLINOIS FED. AID PROJECT				

SCHEDULE OF QUANTITIES

PROTECTIVE COAT

LOCATION	SQYD
Parapet Wall Replacement Concrete & Surface of Concrete Joints	46
TOTAL	46

CONCRETE REMOVAL

LOCATION	CUYD
E. & W. Structure Joints & Parapets	29.5
TOTAL	29.5

CONCRETE SUPERSTRUCTURE

LOCATION	CUYD
E. & W. Structure Joints & Parapets	29.5
TOTAL	29.5

REINFORCEMENT BARS, EPOXY COATED

LOCATION	Pound
E. & W. Joint Replacements	3043
TOTAL	3043

BAR SPLICERS

LOCATION	EACH
E. & W. Joint Replacements	48
TOTAL	48

PREFORMED JOINT STRIP SEAL

LOCATION	FOOT
E. & W. Joint Replacements	194
TOTAL	194

MOBILIZATION

LOCATION	LSUM
Jobsite - SN.072-0154	1
TOTAL	1

CHANGEABLE MESSAGE SIGN

LOCATION	CALMO
Jobsite - SN.072-0154	2
TOTAL	2

PAVMT. MRKG. TAPE, TYPE III, 4"

LOCATION	FOOT
Jobsite - SN.072-0154	5055
TOTAL	5055

PVMT. MRKG. TAPE, TYPE III, 6"

LOCATION	FOOT
Jobsite - SN.072-0154	1025
TOTAL	1025

WORKZONE PVMT. MRKG. REM.

LOCATION	SQFT
Jobsite - SN.072-0154	1685
TOTAL	1685

TEMPORARY CONC. BARRIER

LOCATION	FOOT
Jobsite - SN.072-0154	925
TOTAL	925

RELOCATE TEMP. CONC. BARRIER

LOCATION	FOOT
Jobsite - SN.072-0154	925
TOTAL	925

EPOXY MRKG. - LINE, 4"

LOCATION	FOOT
Jobsite - SN.072-0154	921
TOTAL	921

PAVEMENT MARKING REMOVAL

LOCATION	SQFT
Jobsite - SN.072-0154	307
TOTAL	307

T. C. & PROTECTION (SPECIAL)

LOCATION	LSUM
Jobsite - SN.072-0154	1
TOTAL	1

WIDTH RESTRICTION SIGNING

LOCATION	LSUM
EB. Traffic Control	0.5
WB. Traffic Control	0.5
TOTAL	1

IMPACT ATTEN., TEMP. (NRD) TL2

LOCATION	EACH
Jobsite - SN.072-0154	4
TOTAL	4

IMPACT ATTEN., RELOC. (NRD) TL2

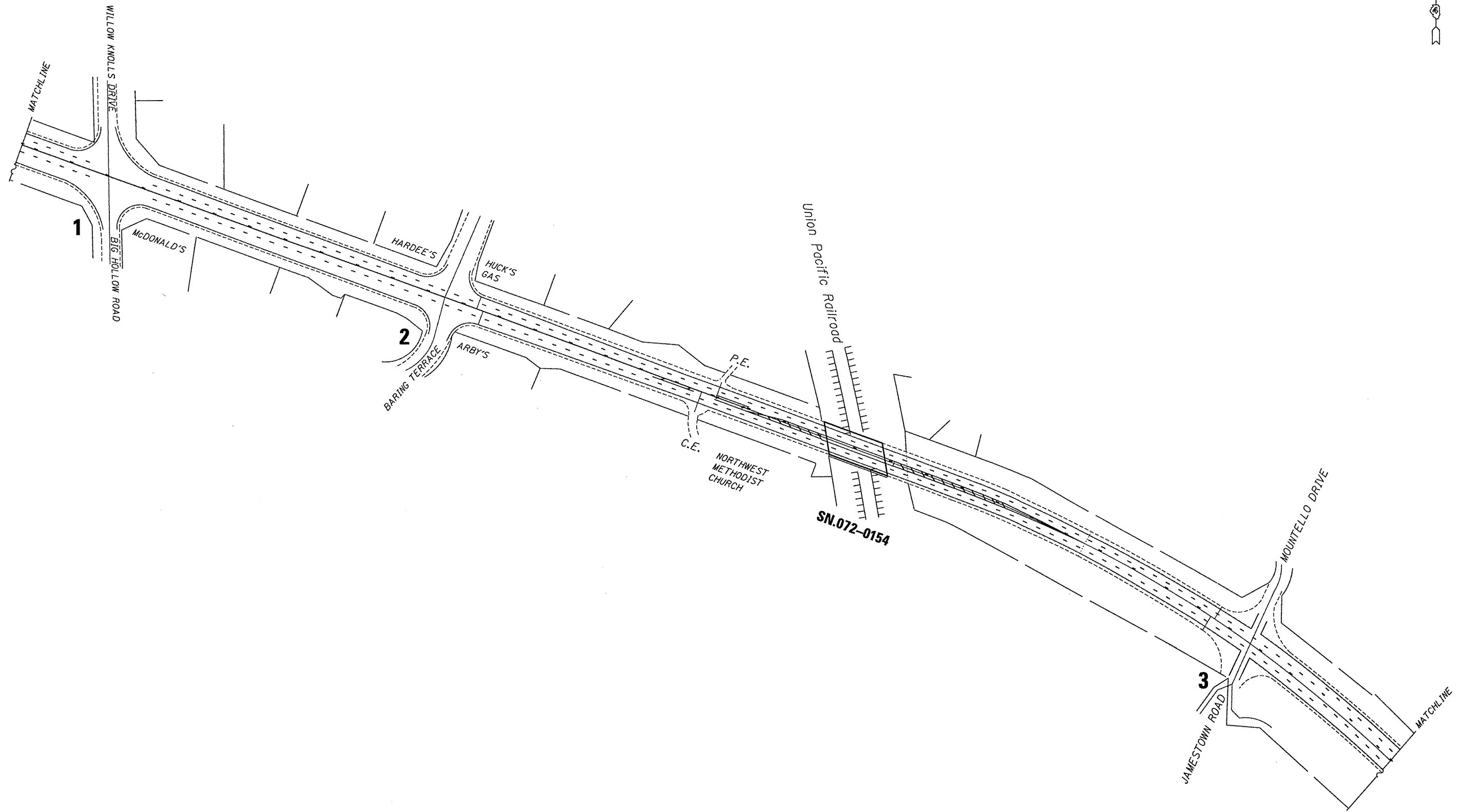
LOCATION	EACH
Jobsite - SN.072-0154	4
TOTAL	4

RAILROAD PROT. LIABILITY INS.

LOCATION	LSUM
Jobsite - SN.072-0154	1
TOTAL	1

S:\GEN\DRIFT\STD&PLNS\SOAD BRIDGES\BRIDGE CONTRACTS\JOINTS\68685 SN072-0154 US150 ovr CNRR.dgn

FILE NAME =	USER NAME = *USER*	DESIGNED - C JONES	REVISED - _____	STATE OF ILLINOIS DEPARTMENT OF TRANSPORTATION	SCHEDULE OF QUANTITIES STRUCTURE NO. 072-0134	F.A.P. RTE.	SECTION	COUNTY	TOTAL SHEETS	SHEET NO.	
#FILE#		DRAWN - C JONES	REVISED - _____			317	(48BI-1)	PEORIA	14	4	
		CHECKED - _____	REVISED - _____			N.Abut. Rehab, Brgs./Jt. Repl. CONTRACT NO. 68995					
		DATE - 12/28/2010	REVISED - _____			ILLINOIS FED. AID PROJECT					



S:\GEN\DRAW\STD&PLNS\SQUAD BRIDGES\BRIDGE CONTRACTS\JOINTS\68685 SN072-0154 US150 ovr CNRR.dgn

1.-3. East to West sequence of intersections on project

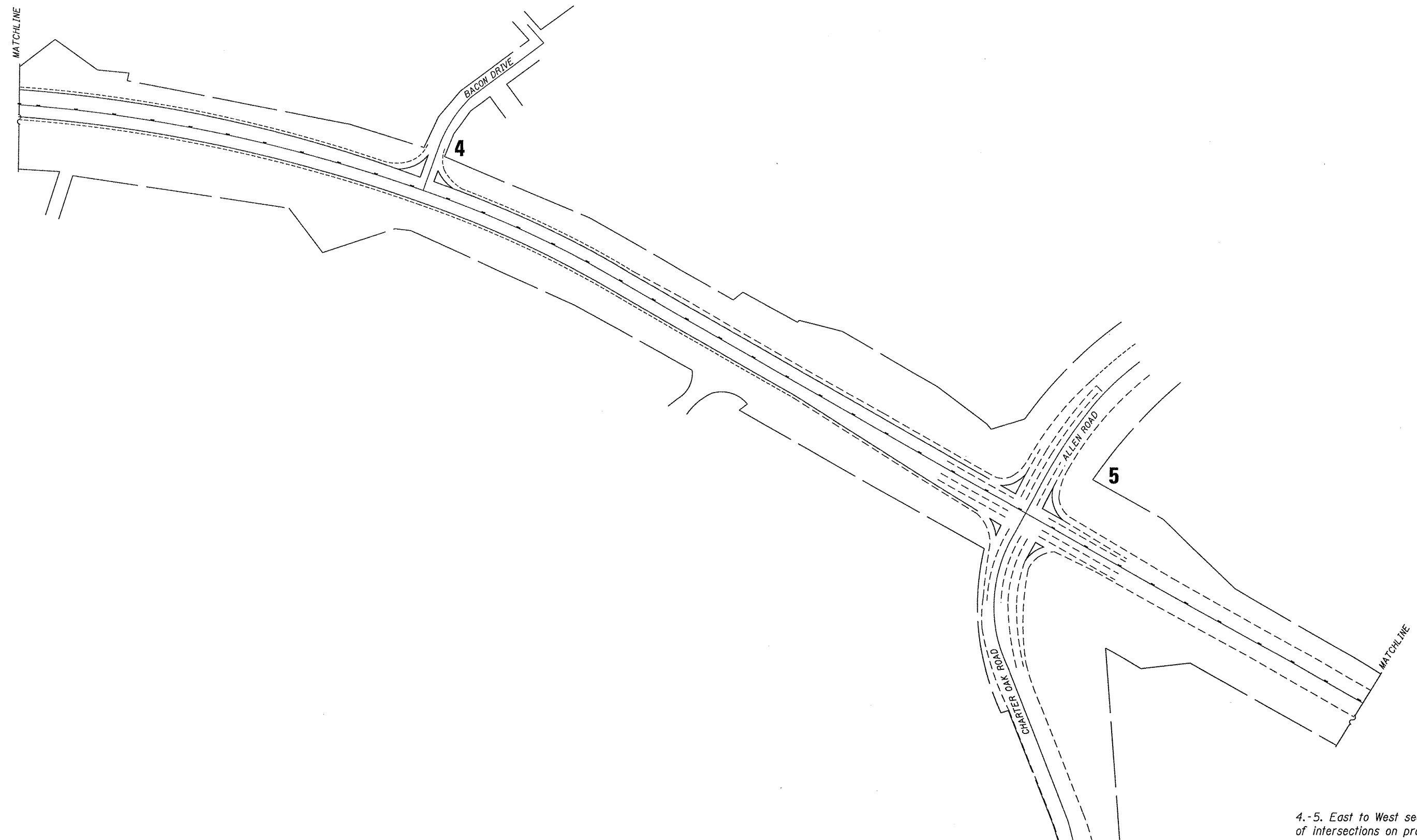
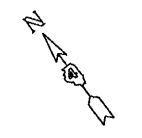
FILE NAME =	USER NAME = #USER#	DESIGNED - CEJ	REVISED - _____
#FILE#		DRAWN - CEJ	REVISED - _____
	PLOT SCALE = #SCALE#	CHECKED - _____	REVISED - _____
	PLOT DATE = #DATE#	DATE - 01/03/2011	REVISED - _____

STATE OF ILLINOIS
DEPARTMENT OF TRANSPORTATION

GENERAL LAYOUT
STRUCTURE NO. 072-0154

SCALE: _____ SHEET NO. ____ OF ____ SHEETS STA. _____ TO STA. _____

F.A.P. RTE.	SECTION	COUNTY	TOTAL SHEETS	SHEET NO.
317	[(16VB)BRJ]	PEORIA	14	5
JOINT REPLACEMENT W/STRIP SEALS			CONTRACT NO. 68685	
ILLINOIS FED. AID PROJECT				



S:\GEN\DRAW\STD&PLNS\SQUAD BRIDGES\BRIDGE CONTRACTS\JOINTS\68685 SN072-0154 US150 ovr CNRR.dgn

4.-5. East to West sequence of intersections on project

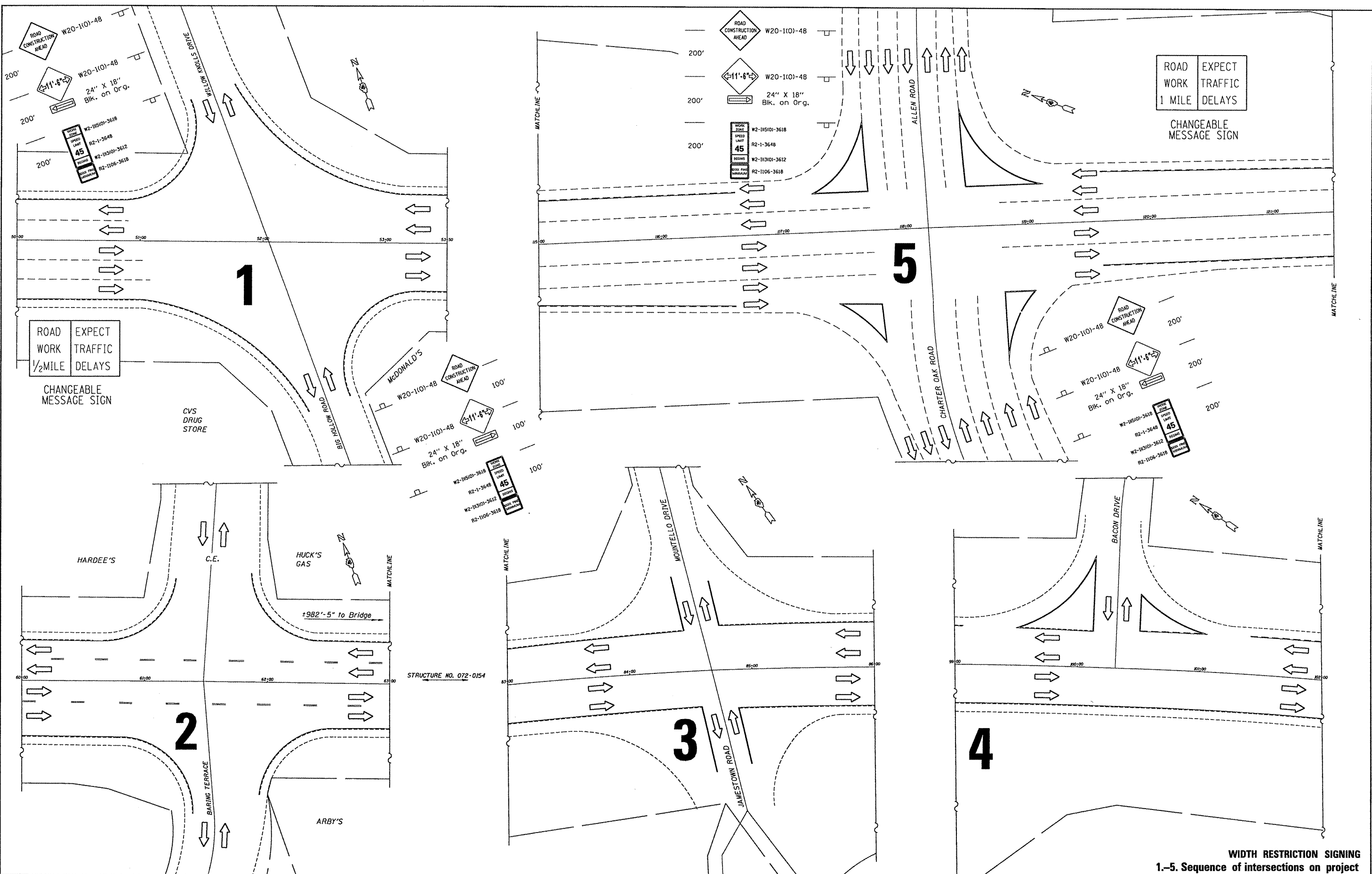
FILE NAME = #FILE#	USER NAME = #USER#	DESIGNED - CEJ	REVISED - _____
		DRAWN - CEJ	REVISED - _____
	PLOT SCALE = #SCALE#	CHECKED - _____	REVISED - _____
	PLOT DATE = #DATE#	DATE - 01/03/2011	REVISED - _____

**STATE OF ILLINOIS
DEPARTMENT OF TRANSPORTATION**

GENERAL LAYOUT	
STRUCTURE NO. 072-0154	
SCALE: _____	SHEET NO. _____ OF _____ SHEETS STA. _____ TO STA. _____

F.A.P. RTE. 317	SECTION [(16VB)BRJ]	COUNTY PEORIA	TOTAL SHEETS 14	SHEET NO. 6
JOINT REPLACEMENT W/STRIP SEALS			CONTRACT NO. 68685	
ILLINOIS FED. AID PROJECT				

S:\GEN\DRAW\STD&PLNS\SQUAD BRIDGES\BRIDGE CONTRACTS\JOINTS\68685 SNO72-0154 US150 ovr CNRR.dgn



FILE NAME =	USER NAME = #USER#	DESIGNED -	REVISED -
#FILE#		DRAWN -	REVISED -
	PLOT SCALE = #SCALE#	CHECKED -	REVISED -
	PLOT DATE = #DATE#	DATE -	REVISED -

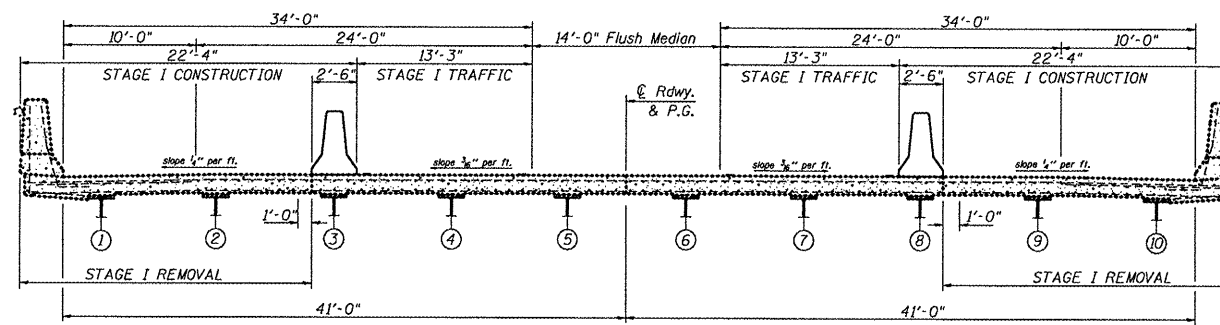
**STATE OF ILLINOIS
DEPARTMENT OF TRANSPORTATION**

**PROPOSED TRAFFIC CONTROL
STRUCTURE NO. 072-0154**

SCALE: _____ SHEET NO. ____ OF ____ SHEETS STA. _____ TO STA. _____

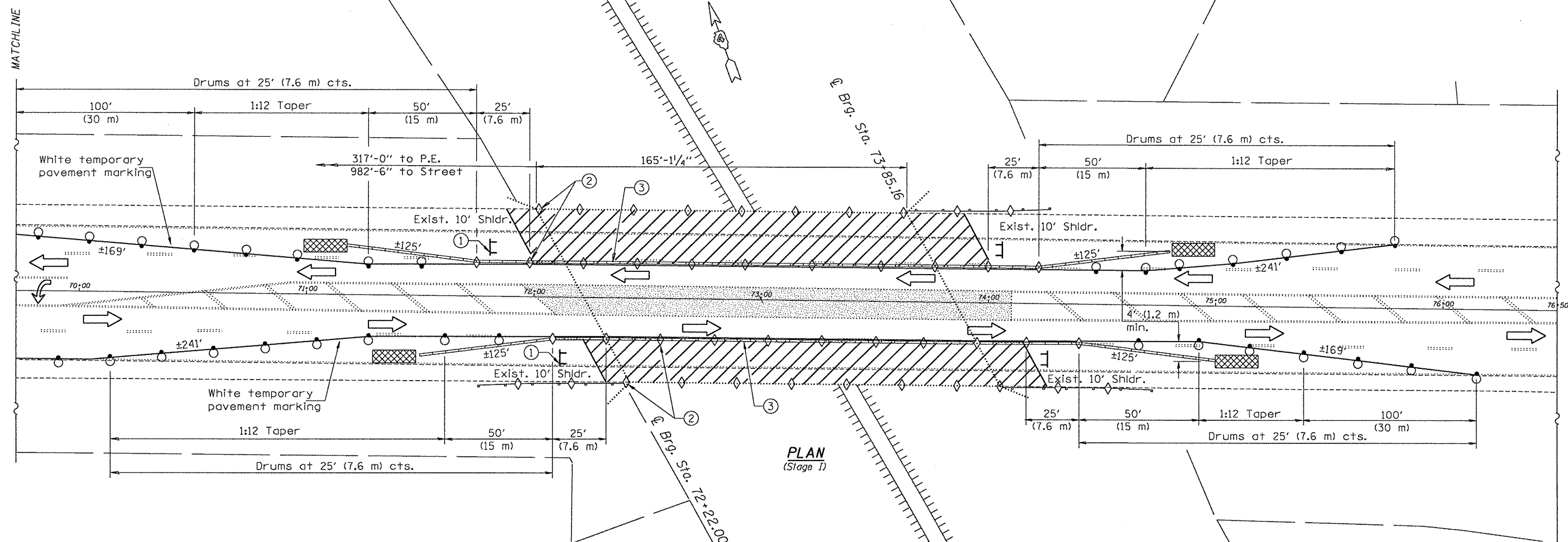
**WIDTH RESTRICTION SIGNING
1.-5. Sequence of intersections on project**

F.A.P. RTE.	SECTION	COUNTY	TOTAL SHEETS	SHEET NO.
317	[[16VB]BR]]	PEORIA	14	7
JOINT REPLACEMENT W/STRIP SEALS			CONTRACT NO. 68685	
[[ILLINOIS] FED. AID PROJECT				



- ① Type III barricade to be placed when no work is being performed.
- ② Barrier wall/guardrail markers at 25' (7.6 m) cts. See Standards 704001 & 635011.
- ③ When temp. bridge rail is specified, it shall be connected to the temp. conc. barrier using a traffic barrier terminal Type 11.

CROSS SECTION
(Looking East)



PLAN
(Stage I)

SYMBOLS

- Work area
- Sign
- Type III barricade
- Impact attenuator
- Drum with steady burning bi-directional light
- Temporary concrete barrier
- Double vertical panel (see detail)
- Crystal, bidirectional barrier wall/guardrail marker

NOTES

Traffic staging sequence shall be at the discretion of the Engineer for given field applications. For additional signage and/or device placements, see Traffic Control Special.

S:\GEN\DRAW\STD&PLNS\SQUAD BRIDGES\BRIDGE CONTRACTS\JOINTS\68685 SN072-0154 US150 ovr CNRR.dgn

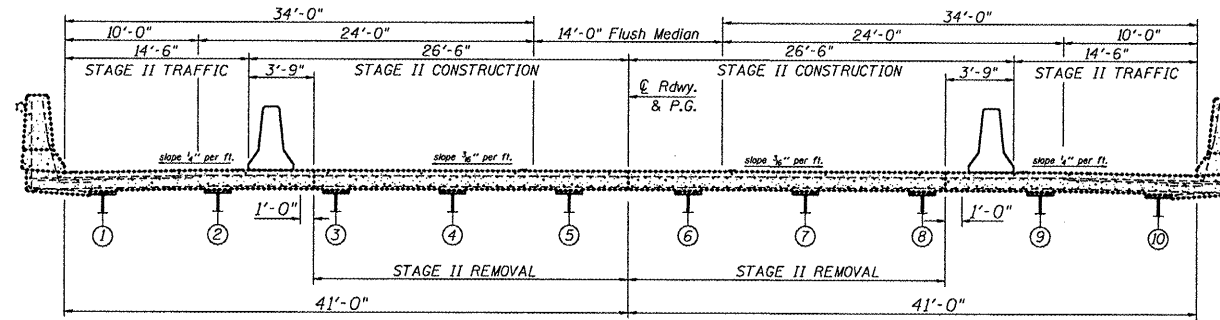
FILE NAME =	USER NAME = #USER#	DESIGNED - CEJ	REVISED -
#FILE#		DRAWN - CEJ	REVISED -
	PLOT SCALE = #SCALE#	CHECKED -	REVISED -
	PLOT DATE = #DATE#	DATE -	REVISED -

STATE OF ILLINOIS
DEPARTMENT OF TRANSPORTATION

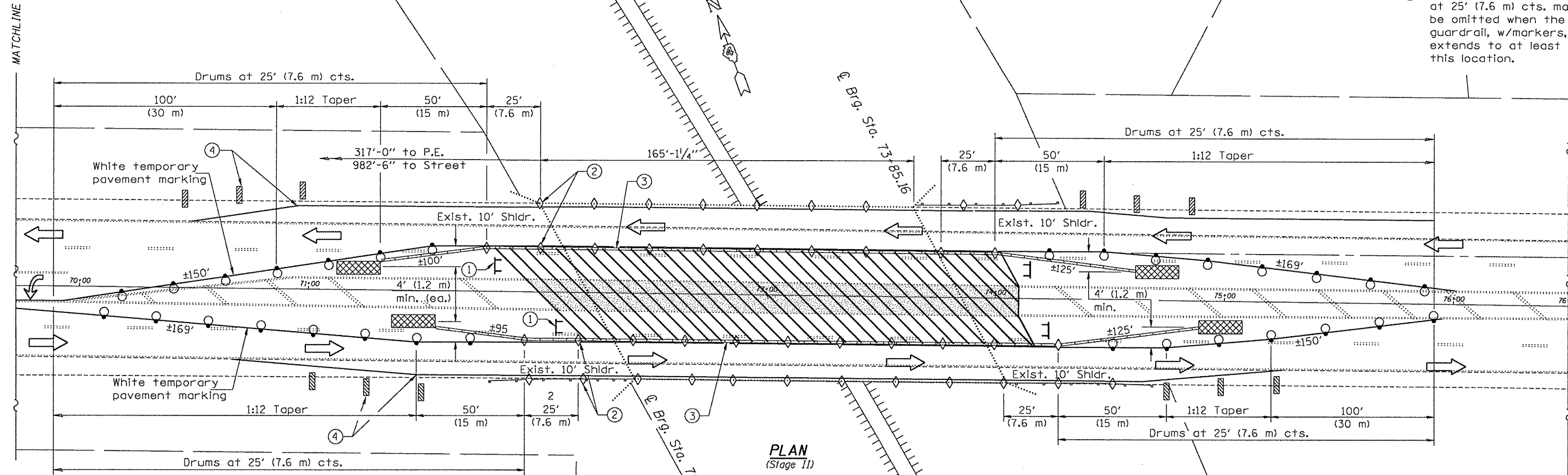
PROPOSED TRAFFIC CONTROL
STRUCTURE NO. 072-0154

F.A.P. RTE.	SECTION	COUNTY	TOTAL SHEETS	SHEET NO.
317	[(16VB)BRJ]	PEORIA	14	8
JOINT REPLACEMENT W/STRIP SEALS			CONTRACT NO. 68685	
ILLINOIS FED. AID PROJECT				

SCALE: _____ SHEET NO. ____ OF ____ SHEETS STA. _____ TO STA. _____



- ① Type III barricade to be placed when no work is being performed.
- ② Barrier wall/guardrail markers at 25' (7.6 m) cts. See Standards 704001 & 635011.
- ③ When temp. bridge rail is specified, it shall be connected to the temp. conc. barrier using a traffic barrier terminal Type 11.
- ④ These vertical panels at 25' (7.6 m) cts. may be omitted when the guardrail, w/markers, extends to at least this location.



SYMBOLS

- Work area
- Drum with steady burning bi-directional light
- Sign
- Temporary concrete barrier
- Type III barricade
- Double vertical panel (see detail)
- Impact attenuator
- Crystal, bidirectional barrier wall/guardrail marker

NOTES

Traffic staging sequence shall be at the discretion of the Engineer for given field applications. For additional signage and/or device placements, see Traffic Control Special.

S:\GEN\DRIFT\STD&PLNS\ROAD BRIDGES\BRIDGE CONTRACTS\JOINTS\68685 SN072-0154 US150 ovr CNRR.dgn

FILE NAME =	USER NAME = #USER#	DESIGNED - CEJ	REVISED -
#FILE#		DRAWN - CEJ	REVISED -
PLOT SCALE = #SCALE#		CHECKED -	REVISED -
PLOT DATE = #DATE#		DATE -	REVISED -

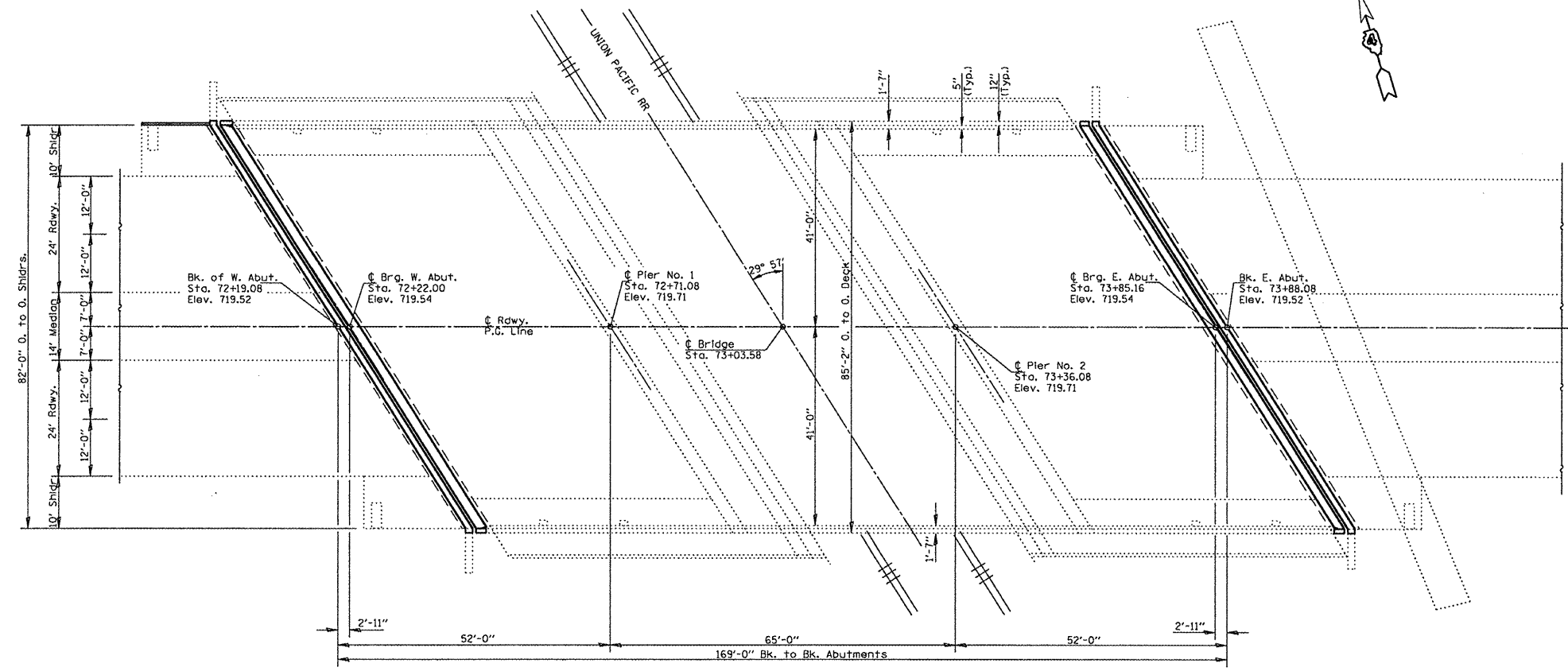
**STATE OF ILLINOIS
DEPARTMENT OF TRANSPORTATION**

**PROPOSED TRAFFIC CONTROL
STRUCTURE NO. 072-0154**

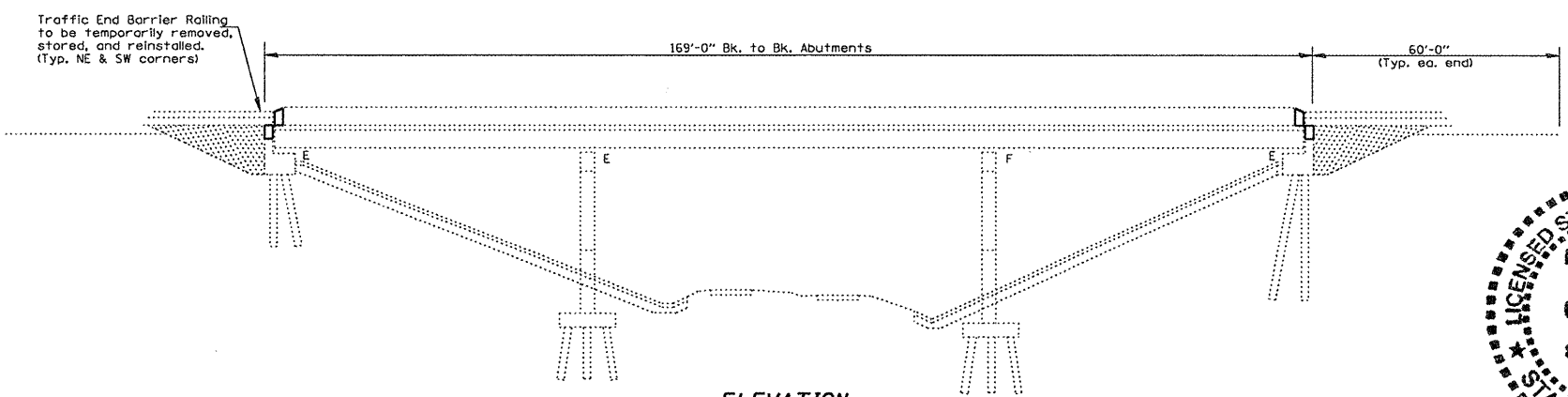
F.A.P. RTE.	SECTION	COUNTY	TOTAL SHEETS	SHEET NO.
317	[(16VB)BR1]	PEORIA	14	9
JOINT REPLACEMENT W/STRIP SEALS			CONTRACT NO. 68685	
ILLINOIS FED. AID PROJECT				

SCALE: _____ SHEET NO. ____ OF ____ SHEETS STA. _____ TO STA. _____

S:\GEN/DRAFT/STD&PLNS/SQUAD BRIDGES/BRIDGE CONTRACTS/JOINTS/68685 SNOT2-0154 US150 ovr CNRR.dgn



PLAN VIEW



ELEVATION

GENERAL NOTES

Plan dimensions and details relative to existing plans are subject to routine variations. The Contractor shall field verify existing dimensions and details affecting new construction and make necessary approved adjustments prior to construction or ordering of materials. Such variations shall not be cause for additional compensation for a change in scope of the work, however, the Contractor will be paid for the quantity actually furnished based upon the unit price bid for the work.

Reinforcement bars shall conform to the requirements of ASTM A 706 Gr 60. See Special Provisions

Reinforcement bars designated (E) shall be epoxy coated.

Existing reinforcement bars extending into the removal area shall be cleaned, straightened and incorporated into the new construction. Any reinforcement bars that are damaged during concrete removal shall be replaced with an approved bar splicer or anchorage system. Cost included with Concrete Removal.

The deck surface shall have it's final finish tined according to Article 420.09(e)(1) of the Standard Specifications. Cost included with Concrete Superstructure.

Joint openings shall be adjusted according to Article 520.04 of the Standard Specifications when the deck is poured at an ambient temperature other than 50°F.

Prior to pouring the new concrete deck, all heavy or loose rust, loose mill scale, and other loose or potentially detrimental foreign material shall be removed from the surfaces in contact with concrete. Tightly adhered paint may remain unless otherwise noted. Removal shall be accomplished by methods that will not damage the steel and the cost will be included in the pay item covering removal of the existing concrete.

TOTAL BILL OF MATERIAL

ITEM	Unit	Quantity
Protective Coat	Sq.Yd.	46
Concrete Removal	Cu.Yd.	29.5
Concrete Superstructure	Cu.Yd.	29.5
Reinforcement Bars, Epoxy Coated	Pound	3043
Bar Splicers	Each	48
Preformed Joint Strip Seal	Foot	194

* Apply to new concrete only



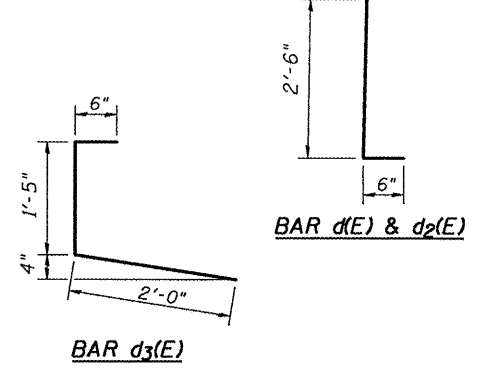
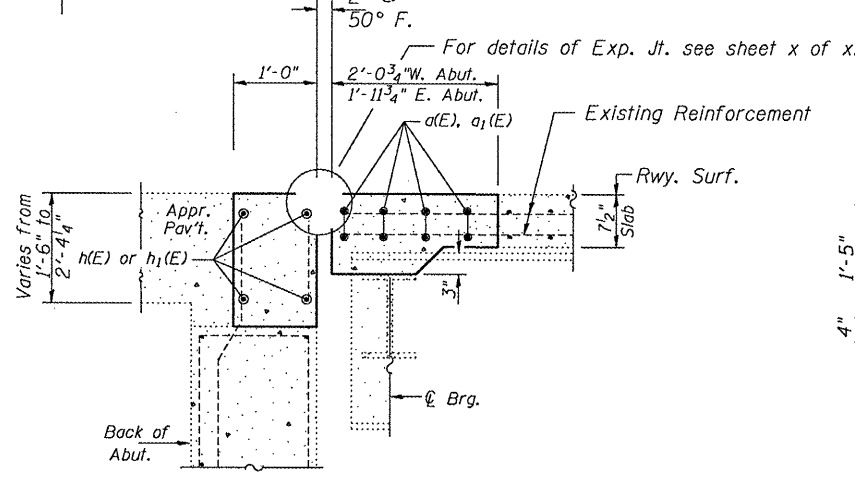
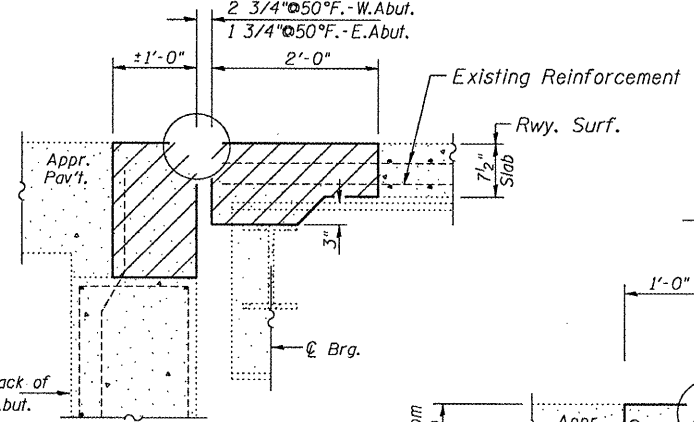
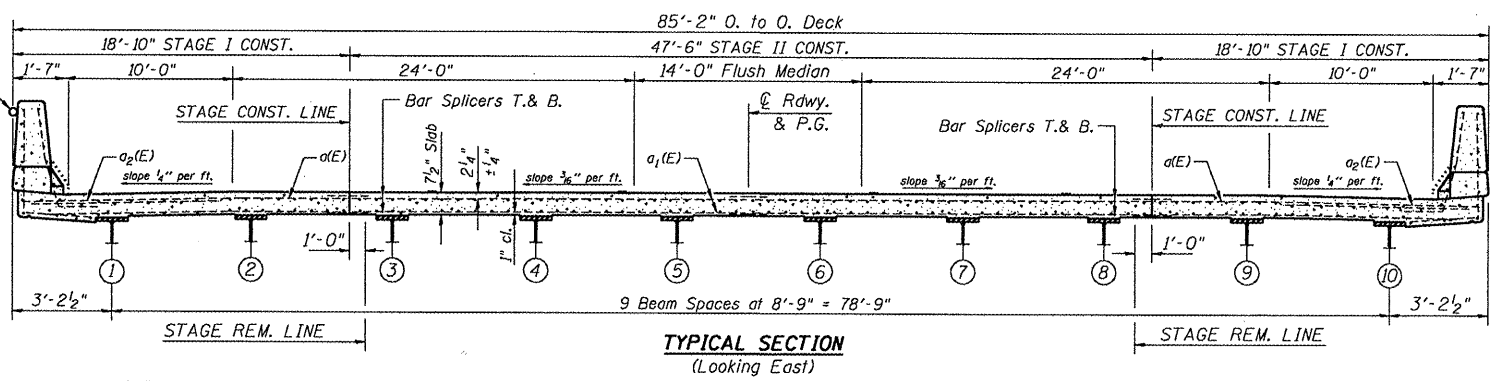
David Carl Puzey 6/30/11
Expires 11/30/2012

DESIGN STRESSES
FIELD UNITS
f'c = 3,500 psi
fy = 60,000 psi (Reinf.)

FILE NAME =	USER NAME = #USER#	DESIGNED - CEJ	REVISED -	STATE OF ILLINOIS DEPARTMENT OF TRANSPORTATION	PLAN & ELEVATION STRUCTURE NO. 072-0154	F.A.P. RTE.	SECTION	COUNTY	TOTAL SHEETS	SHEET NO.	
#FILE#		DRAWN - CEJ	REVISED -			317	[(16VB)BRJ]	PEORIA	14	10	
PLOT SCALE = #SCALE#		CHECKED -	REVISED -			JOINT REPLACEMENT W/STRIP SEALS		CONTRACT NO. 68685			
PLOT DATE = #DATE#		DATE -	REVISED -			ILLINOIS FED. AID PROJECT					

2" conduit to be temporarily detached for concrete parapet removal and replacement. Conduit shall be remounted as found after completion of parapet concrete rework. Cost included with Concrete Removal.

NW. approach slab curb to be removed and replaced. Detail shown on page x of x. Cost included in Concrete Removal and Concrete Superstructure.

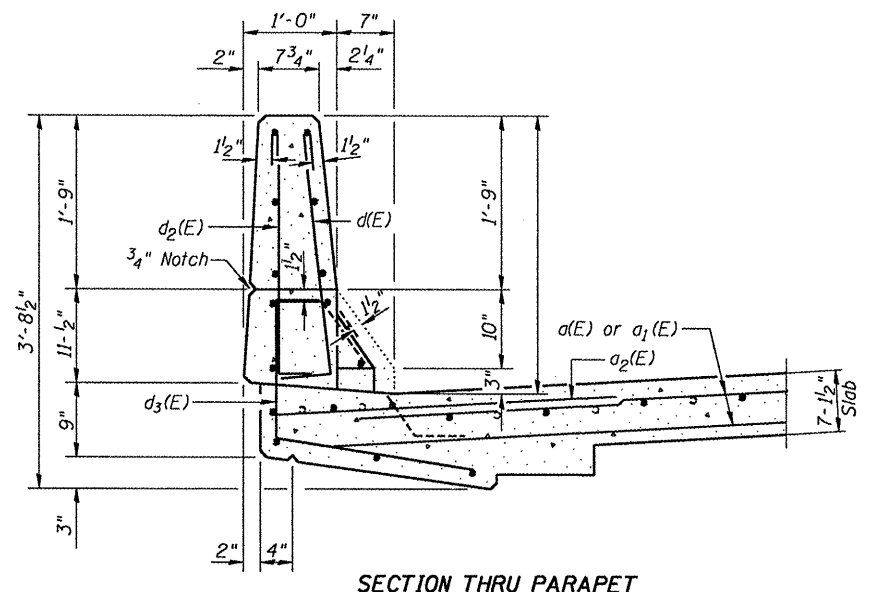
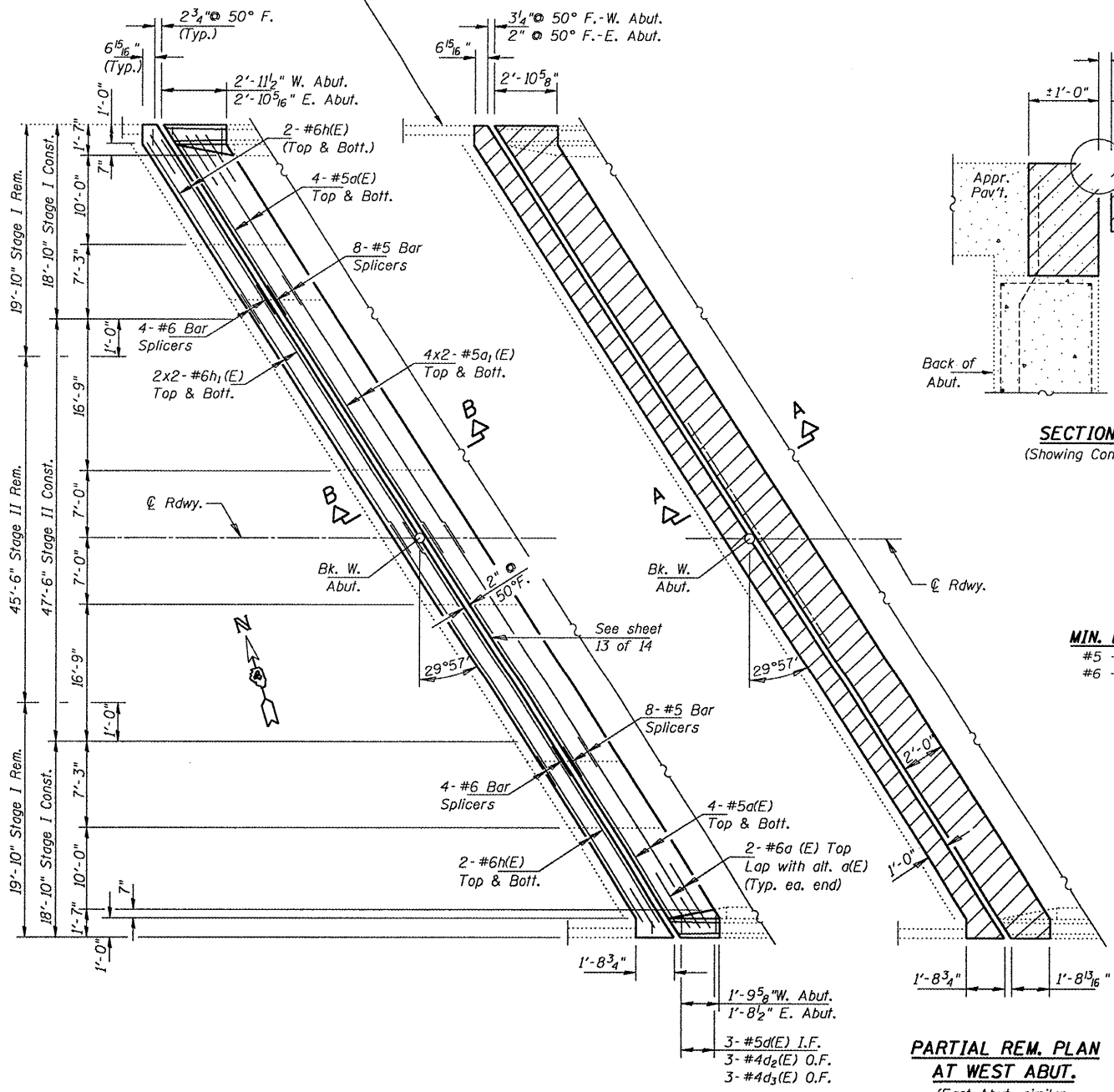


MIN. BAR LAP
#5 - 2'-11"
#6 - 3'-1"

BILL OF MATERIAL

Bar	No.	Size	Length	Shape
$d_1(E)$	32	#5	21'-2"	—
$d_2(E)$	32	#5	28'-10"	—
$d_3(E)$	8	#6	4'-6"	—
$d(E)$	10	#5	3'-0"	┌
$d_2(E)$	12	#4	3'-0"	┌
$d_3(E)$	12	#4	3'-11"	┌
$h(E)$	16	#6	21'-5"	—
$h_1(E)$	16	#6	28'-11"	—
Bar Splicers	Each		48	
Concrete Removal	Cu. Yd.		29.5	
Concrete Superstructure	Cu. Yd.		29.5	
Reinforcement Bars, Epoxy Coated	Pound		3020	

Bars indicated thus: 2x2-#6 etc. indicates 2 lines of bars with 2 lengths per line.

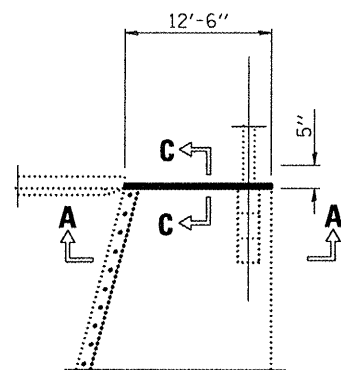


S:\GEN\DRAW\STD&PLNS\SOUAD BRIDGES\BRIDGE CONTRACTS\JOINTS\68685 SN072-0154 US150 ovr CNRR.dgn

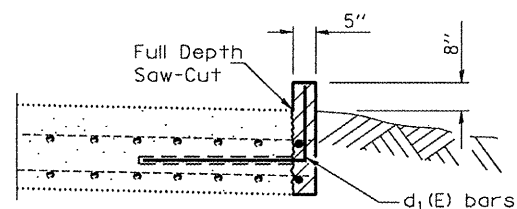
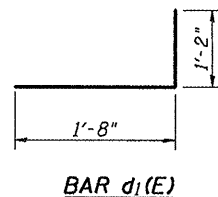
FILE NAME =	USER NAME = #USER#	DESIGNED - CEJ	REVISED -
#FILE#		DRAWN - CEJ	REVISED -
	PLOT SCALE = #SCALE#	CHECKED -	REVISED -
	PLOT DATE = #DATE#	DATE - 03-03-2011	REVISED -

STATE OF ILLINOIS
DEPARTMENT OF TRANSPORTATION

REPAIR DETAILS		F.A.P. RTE.	SECTION	COUNTY	TOTAL SHEETS	SHEET NO.
STRUCTURE NO. 072-0154		317	[(16VB)BR1]	PEORIA	14	11
SCALE: _____		JOINT REPLACEMENT W/STRIP SEALS		CONTRACT NO. 68685		
SHEET NO. 2 OF 5 SHEETS		ILLINOIS FED. AID PROJECT				

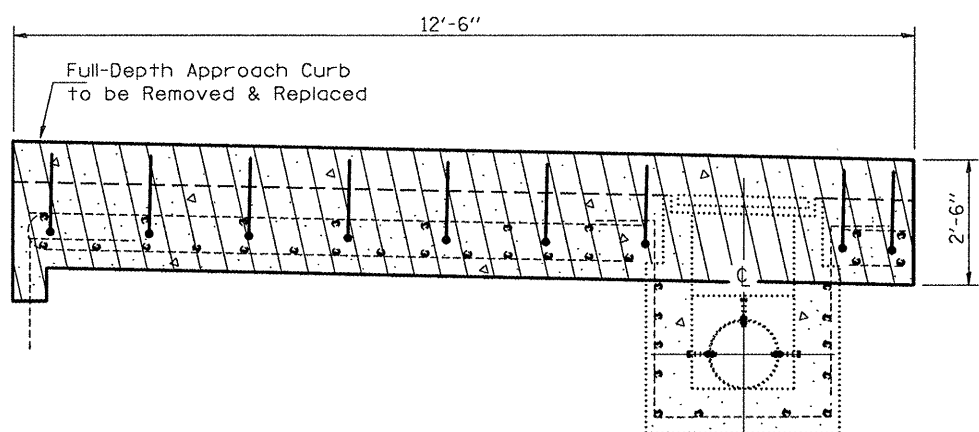


EXISTING
DETAIL PLAN

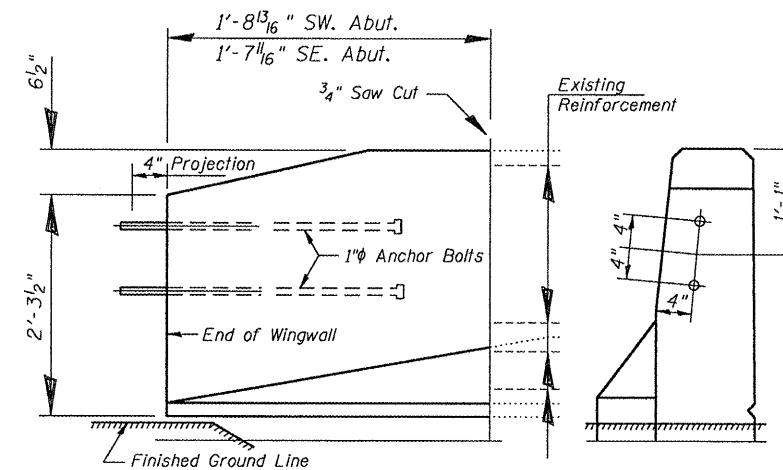


SECTION C-C

Hatched area indicate Concrete Removal and Concrete Superstructure. New concrete curb shall be attached to the existing approach slab with bent reinforcement bars, drilled and epoxied on 12" cts. into the saw-cut vertical face of the slab as shown.



SECTION A-A

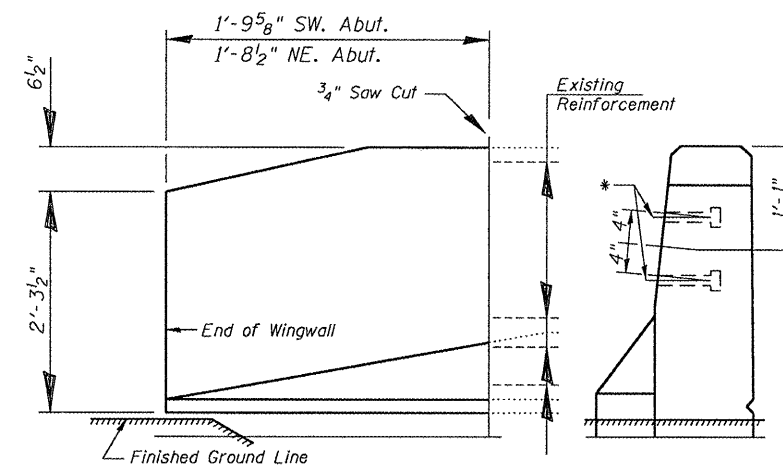


ELEVATION

END VIEW

SOUTH PARAPET AT EAST END

NOTE: To be used with Traffic Barrier Terminal Type 5 (see Standard 631026)



ELEVATION

END VIEW

NORTH PARAPET AT EAST END
SOUTH PARAPET AT WEST END

*NOTE: Existing steel rail to be attached to new concrete. Cost included with Concrete Superstructure.

BILL OF MATERIAL

Bar	No.	Size	Length	Shape
d ₁ (E)	12	#4	2'-10"	└
Concrete Removal			Cu. Yd.	0.5
Concrete Superstructure			Cu. Yd.	0.5
Reinforcement Bars, Epoxy Coated			Pound	23

S:\GEN/DRAFT/STD&PLNS/SQUAD BRIDGES/BRIDGE CONTRACTS/JOINTS/68685 SNOT2-0154 US150 ovr CNRR.dgn

FILE NAME =	USER NAME = #USER#	DESIGNED - CEJ	REVISED -
#FILE#		DRAWN - CEJ	REVISED -
	PLOT SCALE = #SCALE#	CHECKED -	REVISED -
	PLOT DATE = #DATE#	DATE - 04-14-2011	REVISED -

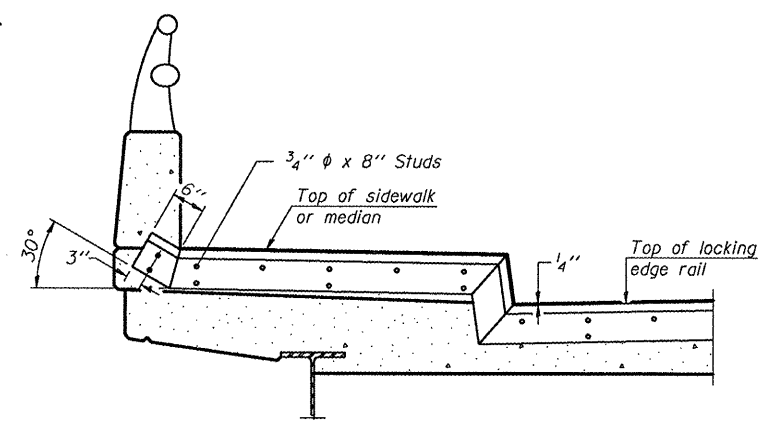
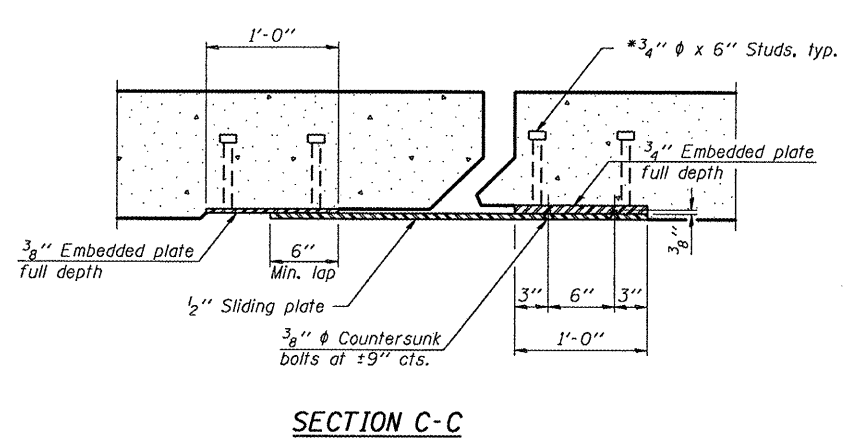
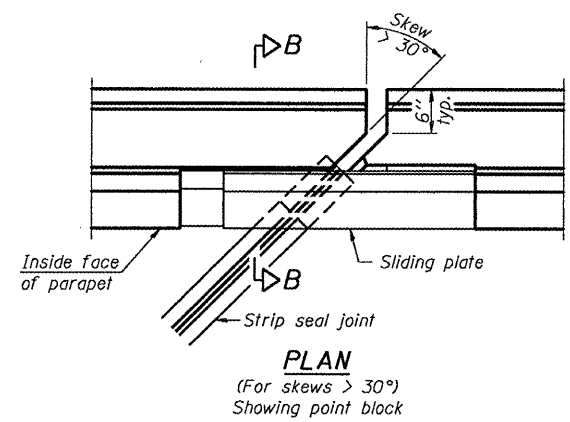
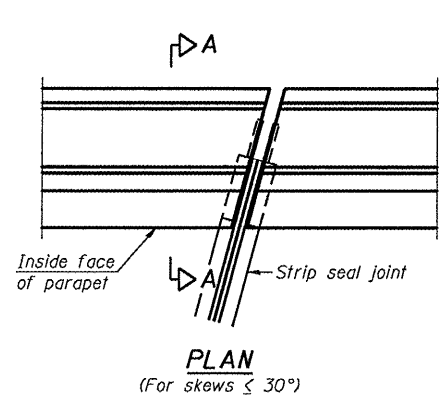
STATE OF ILLINOIS
DEPARTMENT OF TRANSPORTATION

REPAIR DETAILS
STRUCTURE NO. 072-0154

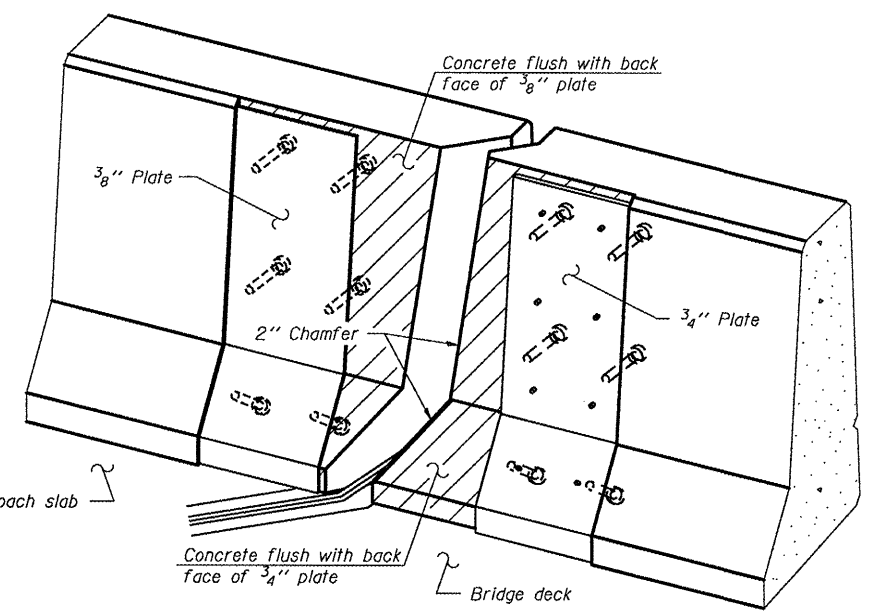
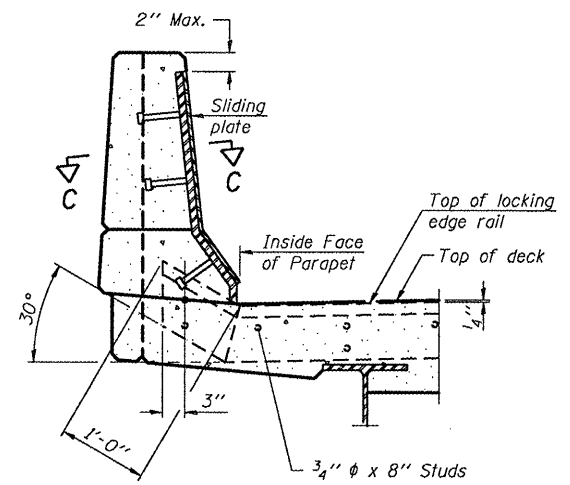
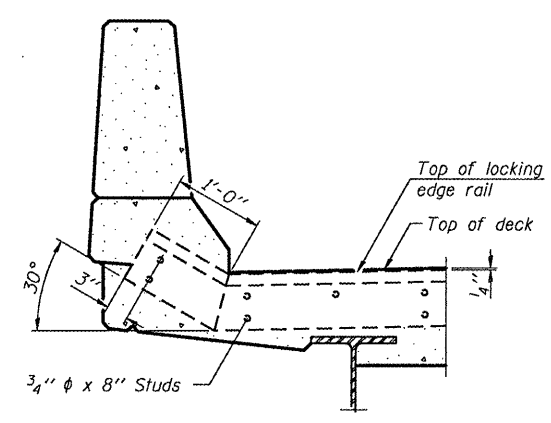
SCALE: SHEET NO. 3 OF 5 SHEETS STA. TO STA.

F.A.P. RTE.	SECTION	COUNTY	TOTAL SHEETS	SHEET NO.
317	[[16VB]BR1]	PEORIA	14	12
JOINT REPLACEMENT W/STRIP SEALS			CONTRACT NO. 68685	
ILLINOIS FED. AID PROJECT				

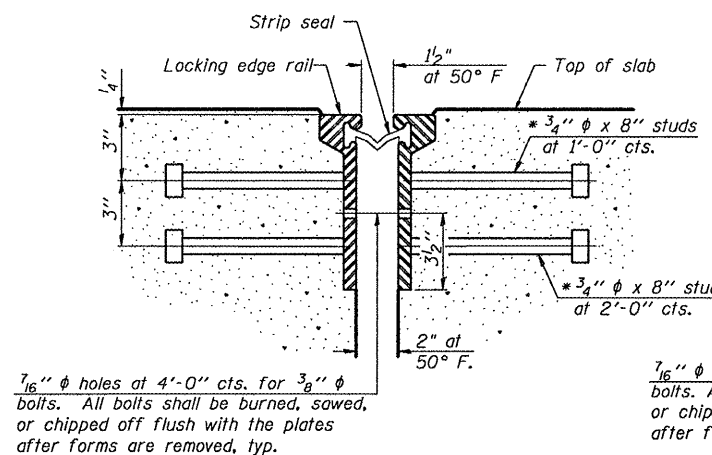
S:\GEN\DRAW\STD&PLNS\SOIAD BRIDGES\BRIDGE CONTRACTS\JOINTS\68685 SNO72-0154 US150 ovr CNRR.dgn



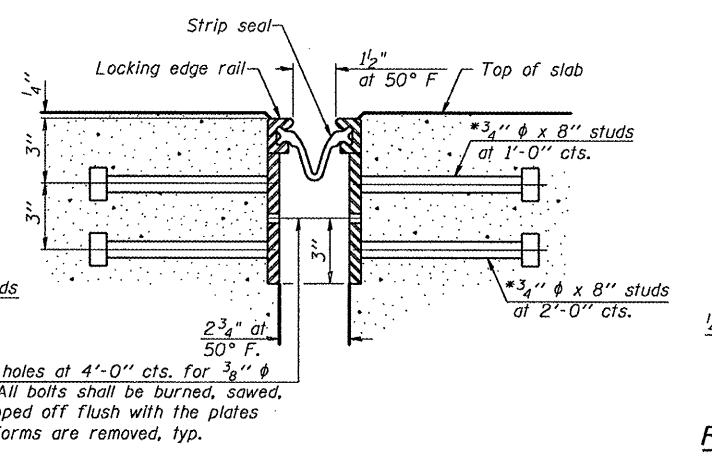
TYPICAL END TREATMENT AT SIDEWALK OR MEDIAN
Shorter plates with a single row of studs at 12" cts. may be necessary on medians which are shallower than 9". See manufacturer's recommendation.



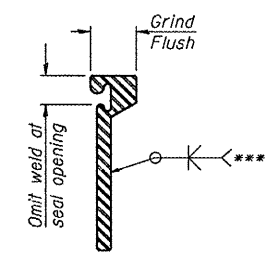
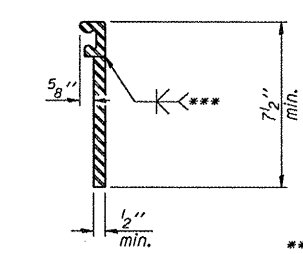
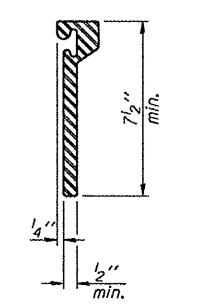
Notes:
The strip seal shall be made continuous and shall have a minimum thickness of 1/4". The configuration of the strip seal shall match the configuration of the Locking Edge Rails. Open or "webbed" strip seal gland configurations are not permitted. The gland shall be sized for a maximum rated movement of 4 inches.
The Locking Edge Rails depicted are conceptual only, except for the minimum dimensions shown. The actual configuration of the Locking Edge Rails and matching strip seal may vary from manufacturer to manufacturer. Flanged edge rails will not be allowed. Locking Edge Rails may be spliced at slope discontinuities.
The manufacturer's recommended installation methods shall be followed.
The joint opening and deck dimensions detailed on the superstructure are based on a rolled rail expansion joint. If the Contractor elects to use the welded rail expansion joint, the opening and deck dimensions shall be modified according to the dimensions detailed on this sheet. Required modifications shall be made at no additional cost to the State.
All steel components shall be galvanized after fabrication according to Article 520.03 of the Standard Specifications.
Maximum space between rail segments at stage lines shall be 3/16", sealed with a suitable sealant.
Parapet plates and anchorage studs for skews $> 30^\circ$ included in the cost of Preformed Joint Strip Seal.



7/16" ϕ holes at 4'-0" cts. for 3/8" ϕ bolts. All bolts shall be burned, sawed, or chipped off flush with the plates after forms are removed, typ.



* Granular or solid flux filled headed studs conforming to Article 1006.32 of the Std. Specs., automatically end welded.



*** Back gouge not required if complete joint penetration is verified by mock-up.

The inside of the locking edge rail groove shall be free of weld residue.
Rolled rail shown, welded rail similar.

BILL OF MATERIAL

Item	Unit	Total
Preformed Joint Strip Seal	Foot	194

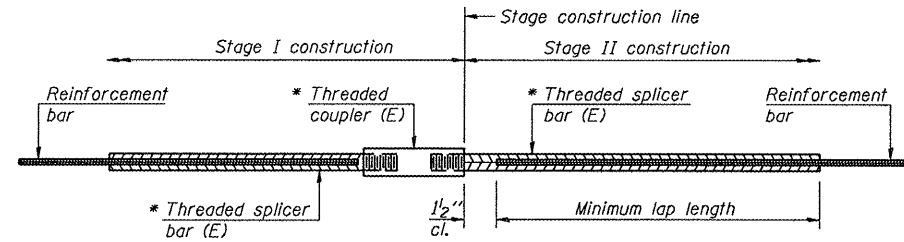
LOCKING EDGE RAILS

FILE NAME =	USER NAME = #USER#	DESIGNED -	REVISED -
#FILE#		DRAWN -	REVISED -
	PLOT SCALE = #SCALE#	CHECKED -	REVISED -
	PLOT DATE = #DATE#	DATE -	REVISED -

**STATE OF ILLINOIS
DEPARTMENT OF TRANSPORTATION**

PREFORMED JOINT STRIP SEAL		F.A.P. RTE.	SECTION	COUNTY	TOTAL SHEETS	SHEET NO.
STRUCTURE NO. 072-0154		317	[(16VB)BRJ]	PEORIA	14	13
SCALE: _____		SHEET NO. 4 OF 5 SHEETS		STA. _____ TO STA. _____	JOINT REPLACEMENT W/STRIP SEALS CONTRACT NO. 68685	
				ILLINOIS FED. AID PROJECT		

EJ-SSJ 7-1-10



STANDARD BAR SPLICER ASSEMBLY

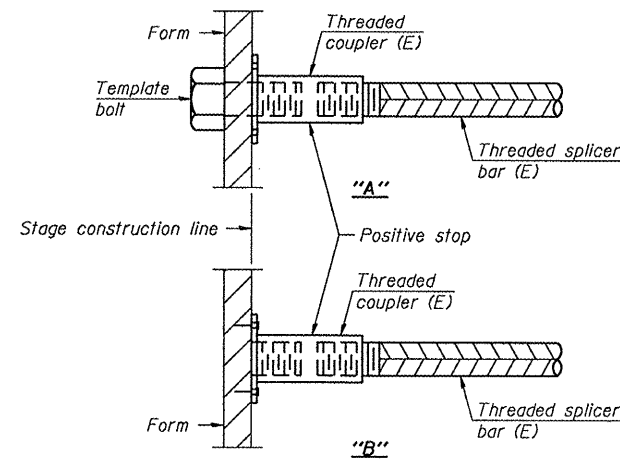
Minimum Lap Lengths					
Bar size to be spliced	Table 1	Table 2	Table 3	Table 4	Table 5
3, 4	1'-5"	1'-11"	2'-1"	2'-4"	2'-3"
5	1'-9"	2'-5"	2'-7"	2'-11"	2'-10"
6	2'-1"	2'-11"	3'-1"	3'-6"	3'-4"
7	2'-9"	3'-10"	4'-2"	4'-8"	4'-6"
8	3'-8"	5'-1"	5'-5"	6'-2"	5'-10"
9	4'-7"	6'-5"	6'-10"	7'-9"	7'-5"

- Table 1: Black bar, 0.8 Class C
- Table 2: Black bar, Top bar lap, 0.8 Class C
- Table 3: Epoxy bar, 0.8 Class C
- Table 4: Epoxy bar, Top bar lap, 0.8 Class C
- Table 5: Epoxy bar, Top bar lap, Class B

Threaded splicer bar length = min. lap length + 1/2" + thread length

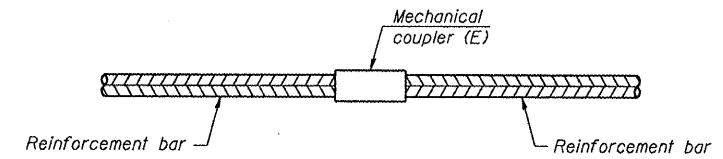
* Epoxy not required on Bar Splicer Assembly components used in conjunction with black bars.

Location	Bar size	No. assemblies required	Table for minimum lap length
Bridge Deck	#5	32	4
Approach Slab	#6	16	3



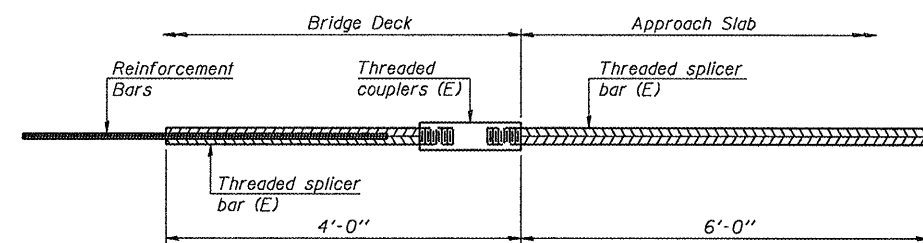
INSTALLATION AND SETTING METHODS

"A": Set bar splicer assembly by means of a template bolt.
 "B": Set bar splicer assembly by nailing to wood forms or cementing to steel forms.
 (E) : Indicates epoxy coating.



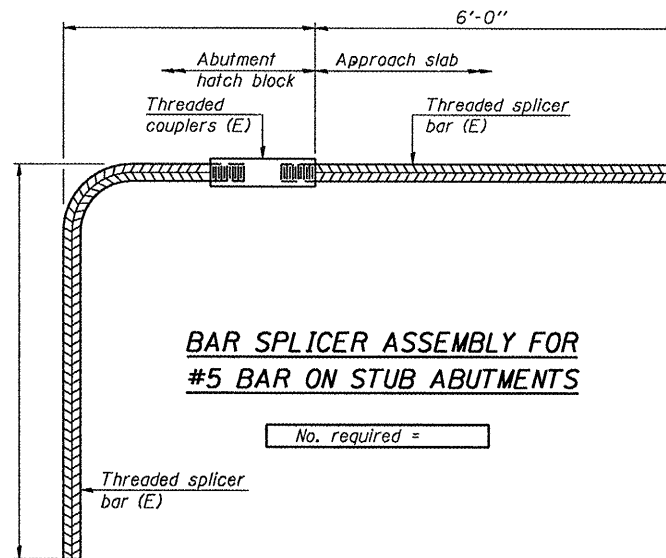
STANDARD MECHANICAL SPLICER

Location	Bar size	No. assemblies required



BAR SPLICER ASSEMBLY FOR #5 BAR ON INTEGRAL OR SEMI-INTEGRAL ABUTMENTS

No. required =



BAR SPLICER ASSEMBLY FOR #5 BAR ON STUB ABUTMENTS

No. required =

NOTES

Splicer bars shall be deformed with threaded ends and have a minimum 60 ksi yield strength.
 All reinforcement shall be lapped and tied to the splicer bars.
 Bar splicer assemblies shall be epoxy coated according to the requirements for reinforcement bars. See Section 508 of the Standard Specifications.
 See special provision for Mechanical Splicers.
 See approved list of bar splicer assemblies and mechanical splicers for alternatives.

S:\GEN\DRIFT\STD&PLNS\SQUAD BRIDGES\BRIDGE CONTRACTS\JOINTS\68685 SN072-0154 US150 ovr CNRR.dgn

BSD-1

7-1-10

FILE NAME =	USER NAME = #USER#	DESIGNED - CEJ	REVISED -
#FILE#		DRAWN - CEJ	REVISED -
	PLOT SCALE = #SCALE#	CHECKED -	REVISED -
	PLOT DATE = #DATE#	DATE -	REVISED -

STATE OF ILLINOIS
DEPARTMENT OF TRANSPORTATION

BAR SPLICER ASSEMBLY AND MECHANICAL SPLICER DETAILS
STRUCTURE NO. 072-0154

SCALE: SHEET NO. 5 OF 5 SHEETS STA. TO STA.

F.A.P. RTE.	SECTION	COUNTY	TOTAL SHEETS	SHEET NO.
317	[(16VB)BR]	PEORIA	14	14
JOINT REPLACEMENT W/STRIP SEALS			CONTRACT NO. 68685	
ILLINOIS FED. AID PROJECT				