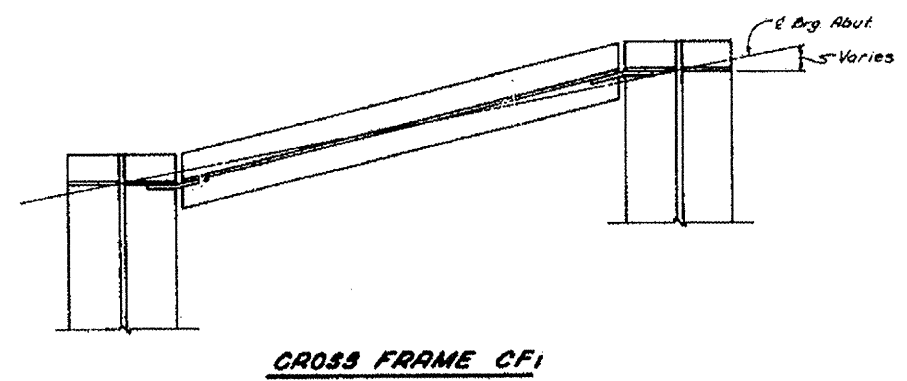
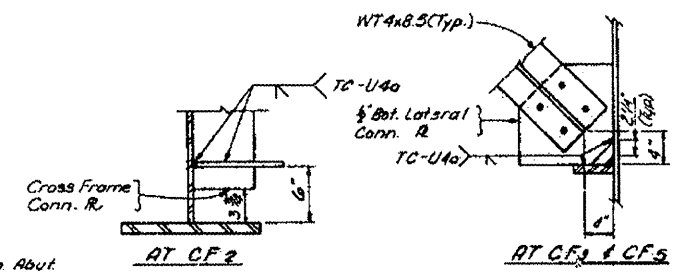
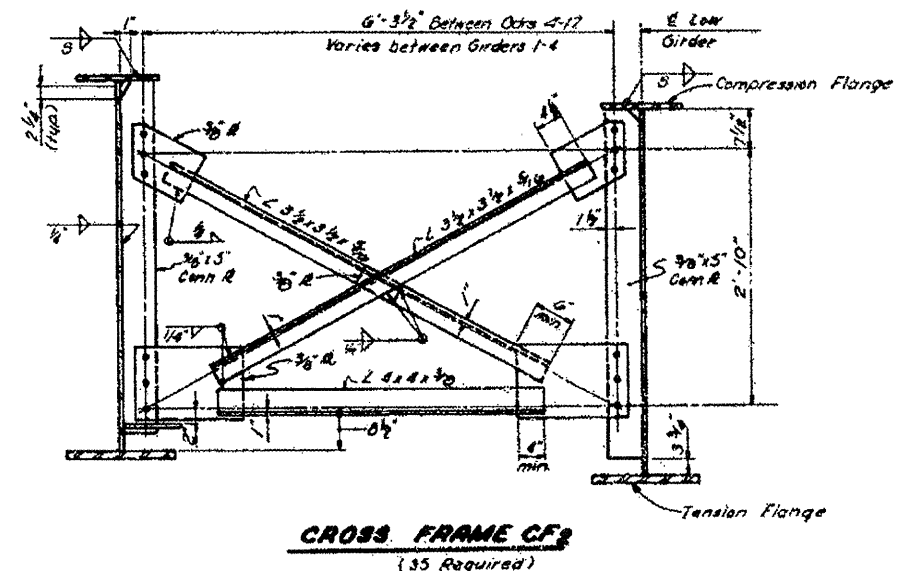
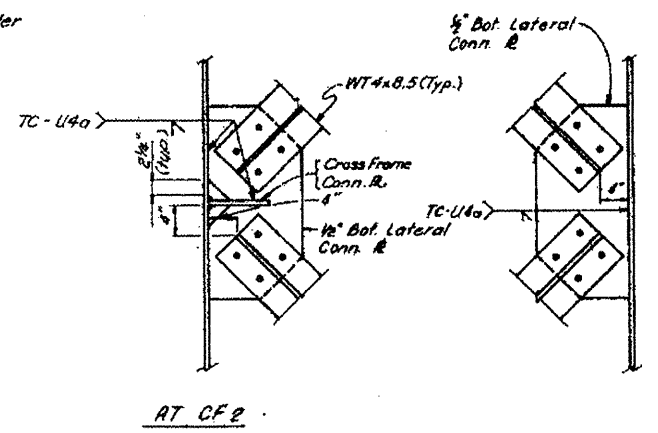
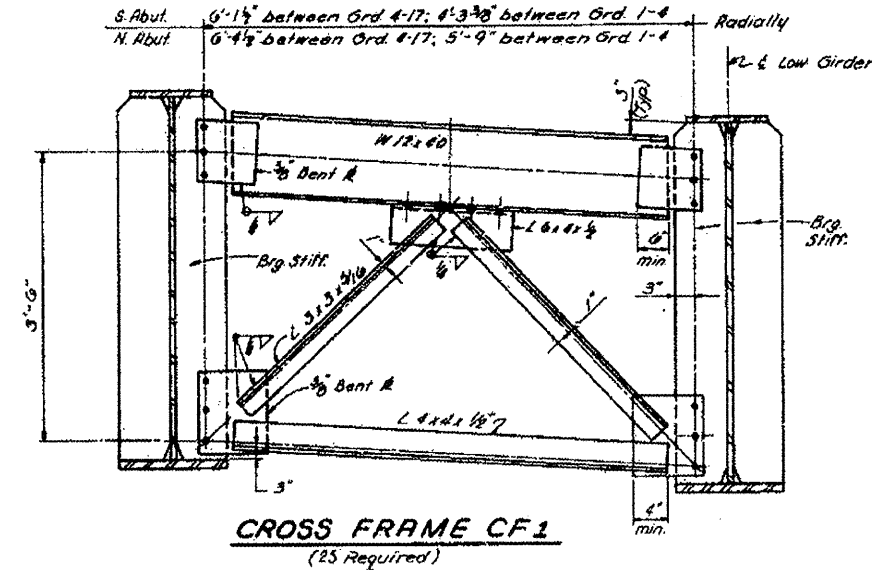


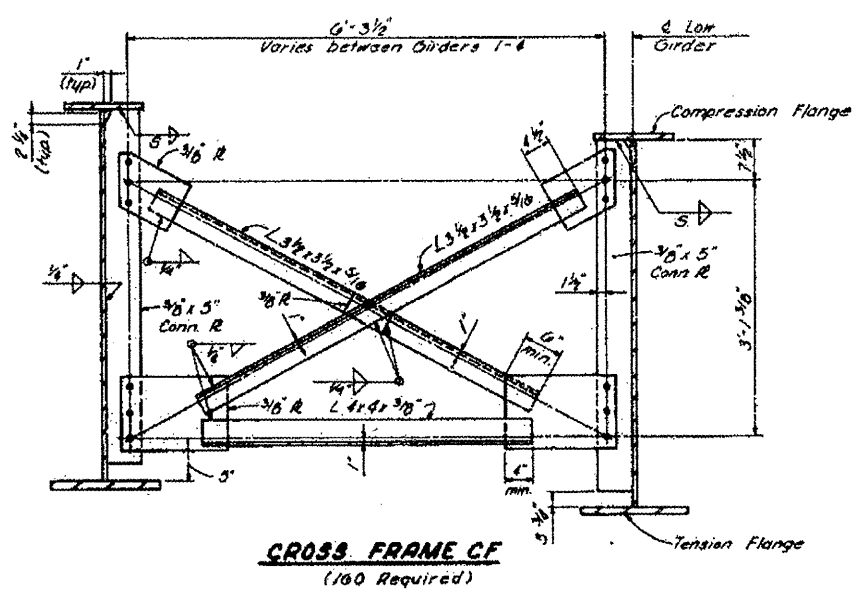
INFORMATION ONLY

g	Flange Thickness
1/2"	3/4"
3/8"	1 1/8"
5/8"	2 1/8"



LATERAL BRACING CONNECTIONS

NOTE: All Bolts for Cross Frames & Lateral Bracing Connections are to be 3/4" H.S. Bolts with 3/16" Oversized Holes in Gusset R's and Hardened Washers over the Holes in Gusset R's.



FILE NAME = 68A51.dgn	USER NAME = AdadeSA	DESIGNED -	REVISED -
		DRAWN -	REVISED -
		CHECKED -	REVISED -
		DATE -	REVISED -

**STATE OF ILLINOIS
DEPARTMENT OF TRANSPORTATION**

SCALE: _____	SHEET NO. _____ OF _____ SHEETS	STA. _____ TO STA. _____
--------------	---------------------------------	--------------------------

F.A.P. RTE. (318)	SECTION (72-6HB-3)P	COUNTY PEORIA	TOTAL SHEETS 9	SHEET NO. 7
CONTRACT NO. 68A51				
ILLINOIS FED. AID PROJECT				