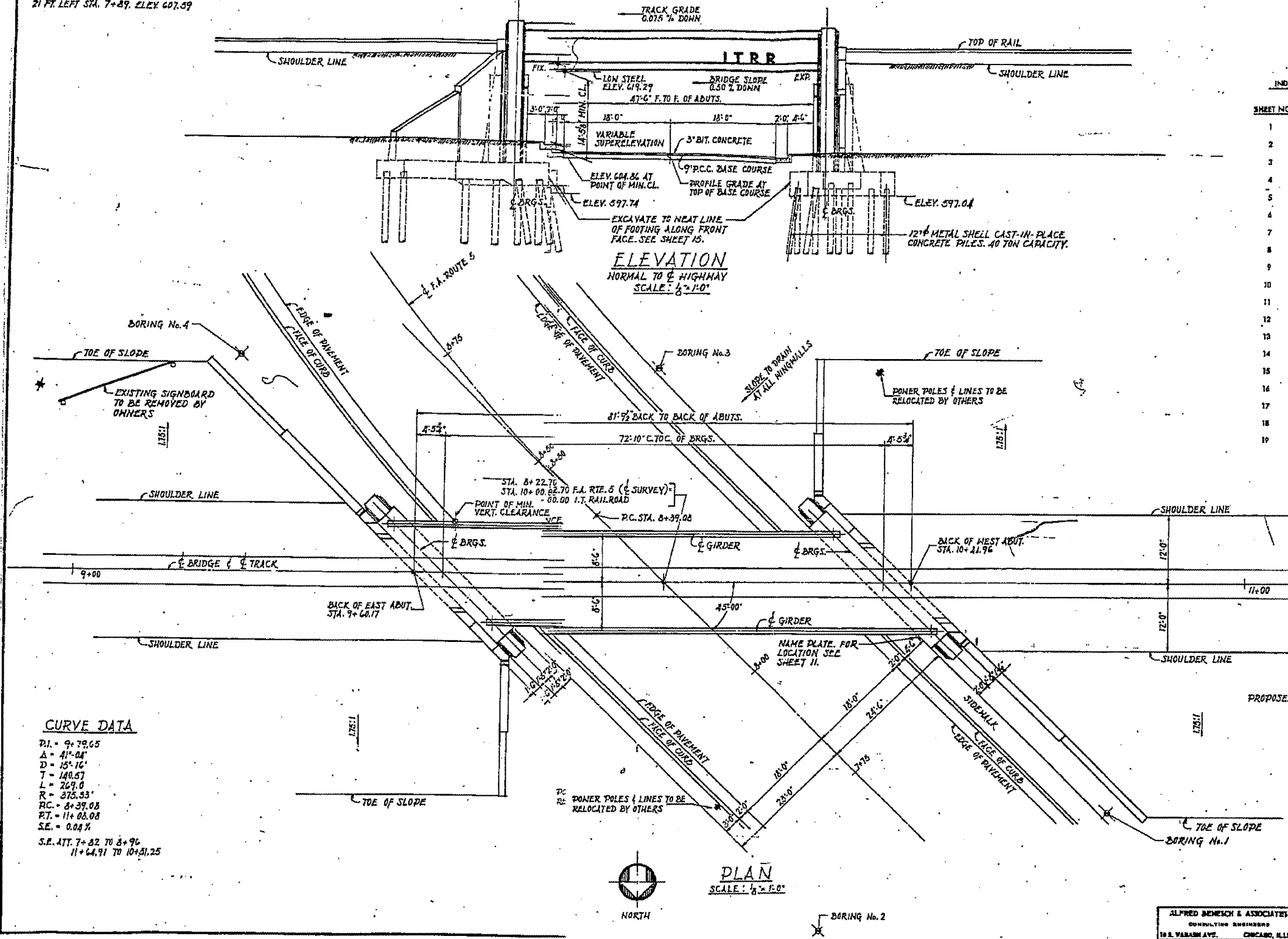


BENCH MARK No. 1
HORIZONTAL RAILROAD SPIKE IN POWER POLE
21 FT. LEFT STA. 7+89. ELEV. 607.59

084-0033

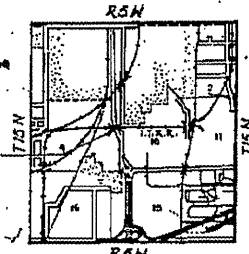
SECTION	COUNTY	TOTAL SHEETS	SHEET NO.
F.A. 5	110X-750	SANGAMON	25
STA.	TO STA.		PROJECT
S.P. & M.B. NO. 6	ILLINOIS	SHEET 1 OF 19	



INDEX OF BRIDGE PLANS

SHEET NO.	DESCRIPTION
1	GENERAL PLAN & ELEVATION
2	BORINGS, PROFILES, GENERAL NOTES, DESIGN DATA & QUANTITIES
3	STEEL FRAMING PLAN
4	GRIDER DETAILS
5	TYPICAL DECK CROSS SECTION
6	END FLOOR BEAM
7	UPPER FLOOR PLATE DETAILS
8	FLOOR PLATE DETAILS
9	BEARINGS
10	ABUTMENT FOOTING PLAN
11	WEST ABUTMENT
12	EAST ABUTMENT
13	ABUTMENT DETAILS
14	REINFORCEMENT BAR LISTS
15	EXCAVATION & DRAINAGE DETAILS
16	PLAN & ELEVATION OF TEMPORARY TRESTLE
17	TEMPORARY TRESTLE STEEL SPAN DETAILS
18	TEMPORARY TRESTLE DETAILS
19	TEMPORARY TRESTLE DETAILS

CURVE DATA
 P.I. = 9+79.65
 Δ = 41° 04'
 D = 15° 16'
 T = 140.67
 L = 267.0
 R = 375.93
 P.C. = 8+39.00
 P.T. = 11+60.00
 S.E. = 0.04 %
 S.E. ATT. 7+82 TO 8+96
 11+64.91 TO 10+51.25



LOCATION PLAN
084-0033

GENERAL PLAN & ELEVATION
UNDERPASS
I.T.R.R. BRIDGE No. F-77.5
OVER SOUTH 5TH STREET EXTENDED SPRINGFIELD, ILLINOIS
PROJECT UG 166(140)
F.A. ROUTE 5 SECTION 110X-750
SANGAMON COUNTY
STATION 8+22.70

ALFRED BEMESCH & ASSOCIATES
CONSULTING ENGINEERS
19 S. WABASH AVE. CHICAGO, ILLINOIS

FILE NAME =	USER NAME = #USER#	DESIGNED -	REVISIONS -
#FILE#		DRAWN -	REVISIONS -
		CHECKED -	REVISIONS -
		DATE -	REVISIONS -

STATE OF ILLINOIS
DEPARTMENT OF TRANSPORTATION

084-0033 (FOR INFORMATION ONLY)
SCALE: _____ SHEET NO. ____ OF ____ SHEETS STA. _____ TO STA. _____

F.A.P. RTE.	SECTION	COUNTY	TOTAL SHEETS	SHEET NO.
666	D-G PAINTING 2800'	SANGAMON	13	7
PROJECT NO. 2012			CONTRACT NO. T2C48	
FED. ROAD DIST. NO. 6 ILLINOIS FED. AID PROJECT				