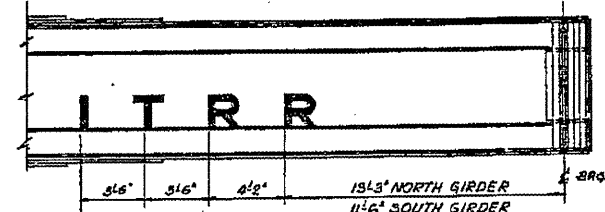
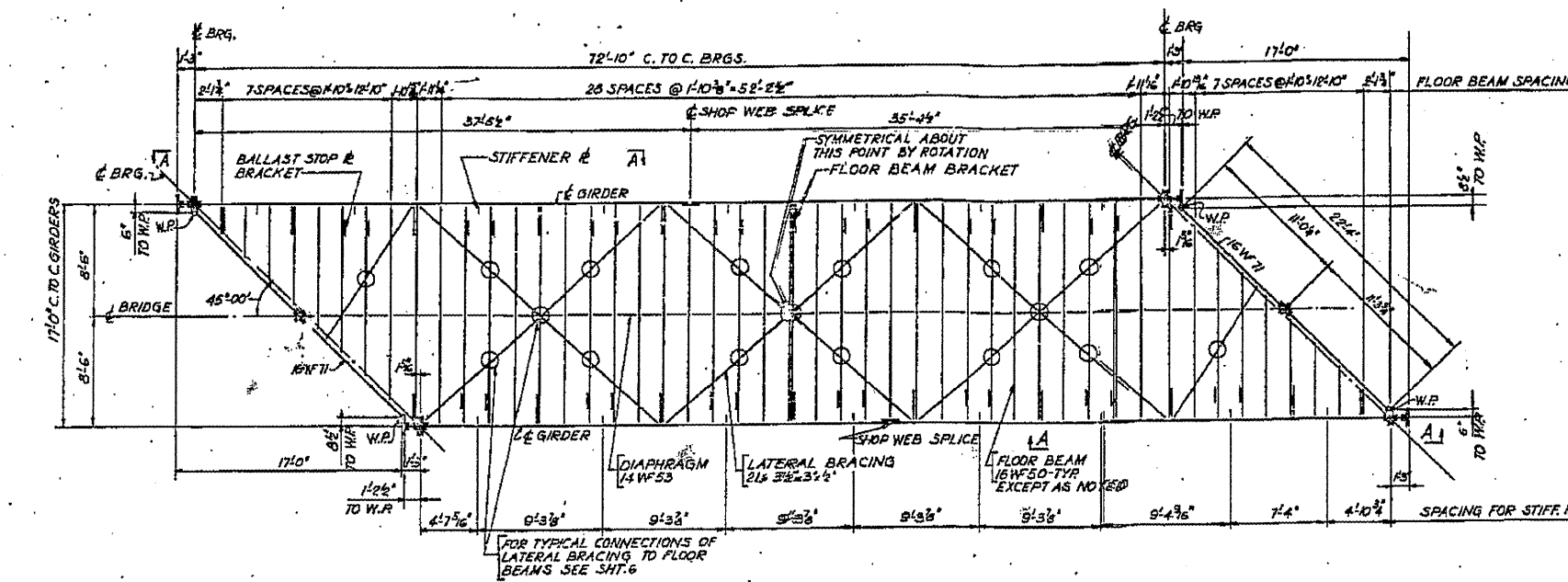
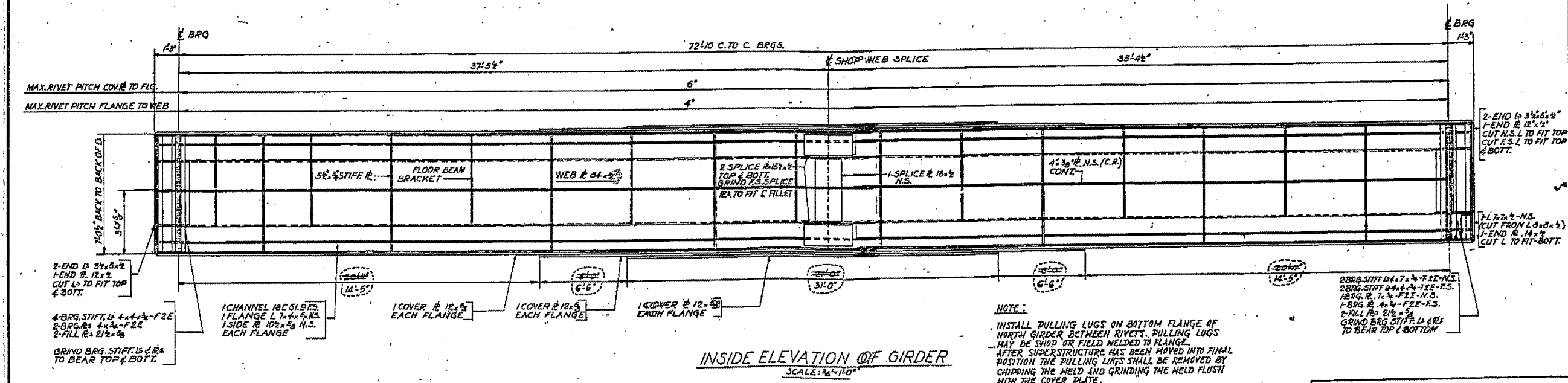


ROUTE NO.	SECTION	COUNTY	TOTAL SHEETS	SHEET NO.
F.A. 5	110X-75B	SANGAMON	25	7
STA.	TO STA.		PROJECT	
6+7.8	110X-75B		STREET 3 OF 19	



SECTION A-A  
SHOWING LOCATION OF LETTERS  
SCALE: 1/4"=1'-0"

FRAMING PLAN  
SCALE: 3/16"=1'-0"



INSIDE ELEVATION OF GIRDER  
SCALE: 3/16"=1'-0"

NOTE:  
INSTALL PULLING LUGS ON BOTTOM FLANGE OF NORTH GIRDER BETWEEN RIVETS. PULLING LUGS MAY BE SHOP OR FIELD WELDED TO FLANGE. AFTER SUPERSTRUCTURE HAS BEEN MOVED INTO FINAL POSITION THE PULLING LUGS SHALL BE REMOVED BY CHIPPING THE WELD AND GRINDING THE WELD FLUSH WITH THE COVER PLATE.

**STEEL FRAMING PLAN**  
**UNDERPASS**  
I.T.R.R. BRIDGE No. F-77.5  
OVER SOUTH 5<sup>TH</sup> STREET EXTENDED SPRINGFIELD, ILLINOIS  
PROJECT UG 166(40)  
F.A. ROUTE 5 SECTION 110X-75 B  
SANGAMON COUNTY  
STATION 6+72.10

ALFRED BENECK & ASSOCIATES  
CONSULTING ENGINEERS  
161 N. WABASH AVE. CHICAGO, ILLINOIS

FILE NAME =	USER NAME = #USER#	DESIGNED -	REVISED -
#FILE#		DRAWN -	REVISED -
		CHECKED -	REVISED -
		DATE -	REVISED -

STATE OF ILLINOIS  
DEPARTMENT OF TRANSPORTATION

084-0033 (FOR INFORMATION ONLY)  
SCALE: SHEET NO. OF SHEETS STA. TO STA.

F.A.P. RTE.	SECTION	COUNTY	TOTAL SHEETS	SHEET NO.
666	D-6 PAINTING 2688	SANGAMON	13	8
2012			CONTRACT NO. 72048	
FED. ROAD DIST. NO. 6 ILLINOIS FED. AID PROJECT				