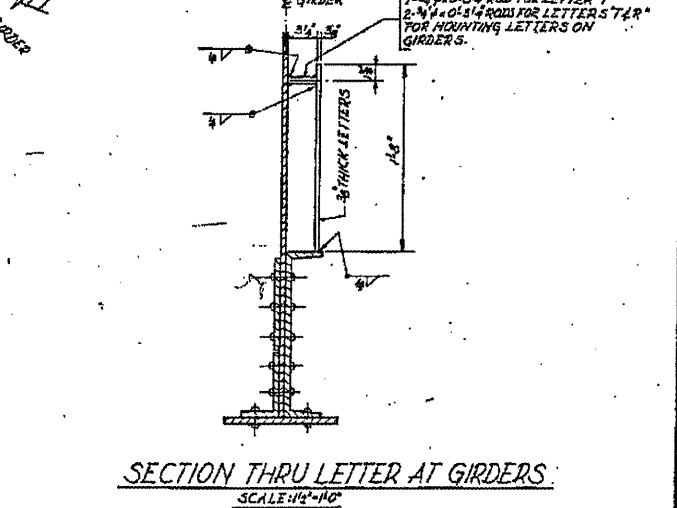
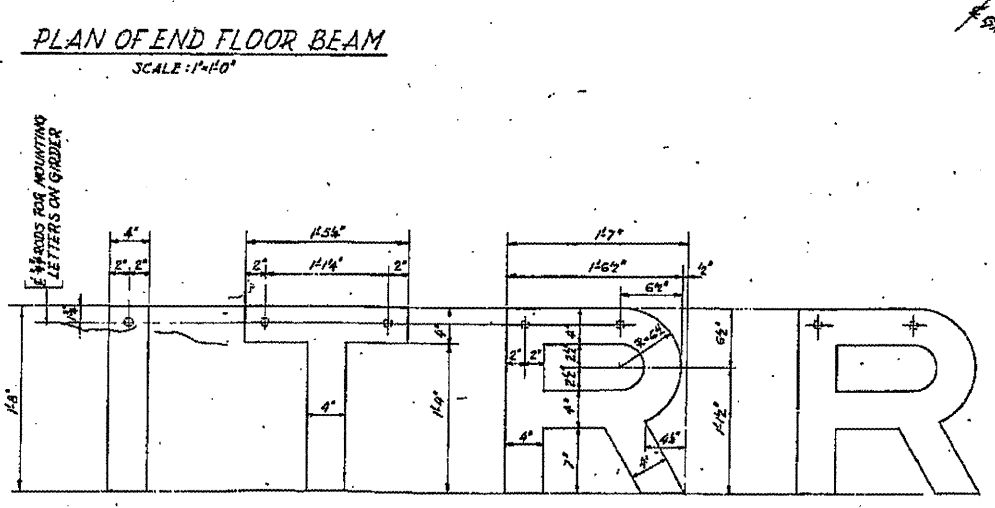
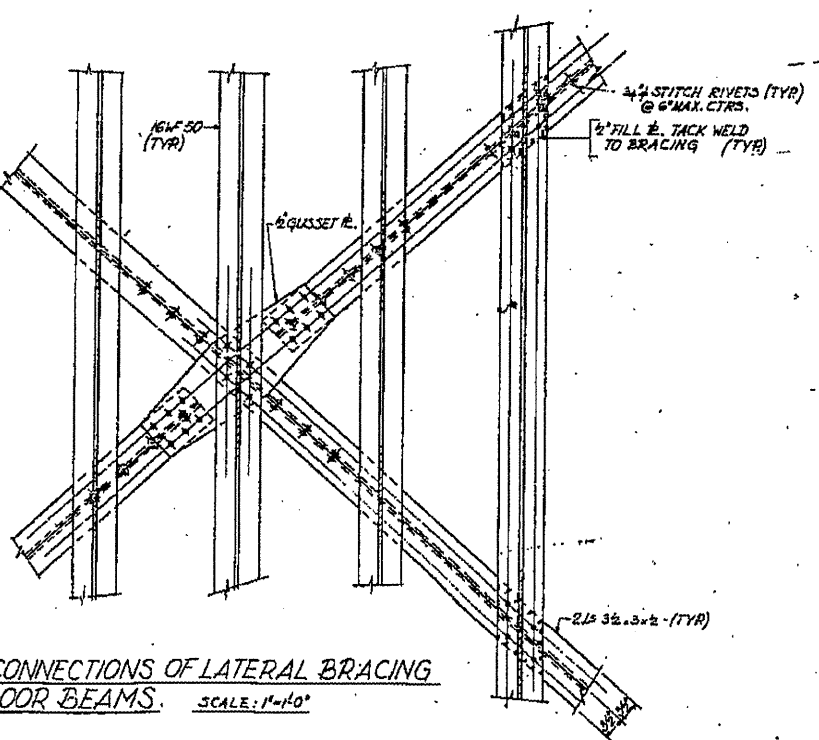
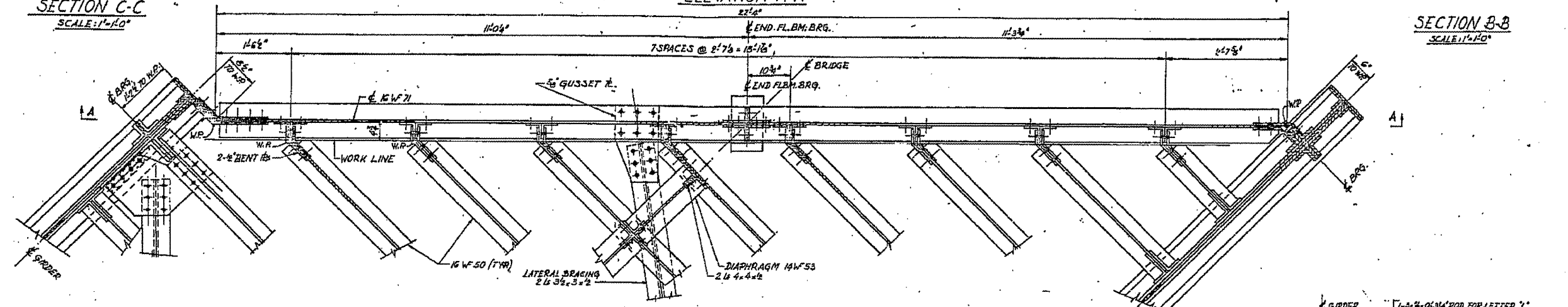
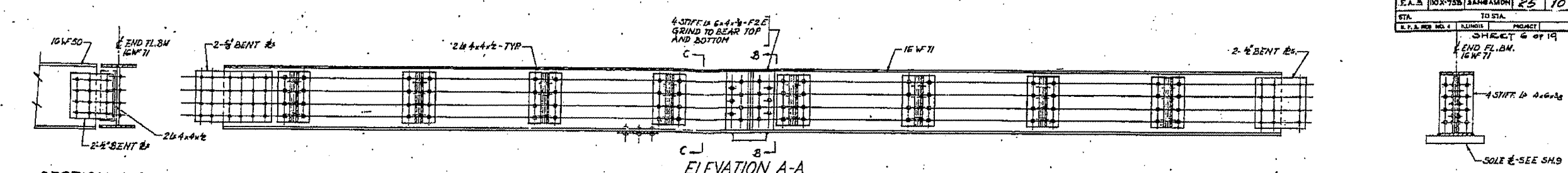


SECTION	NO. OF SHEETS	TOTAL SHEETS
E.A. 5	10X-75B	25
STA.	TO STA.	
E.A. 5	10X-75B	25



**NOTE:**  
LETTERS TO BE CUT FROM 3/8" STRUCTURAL STEEL PLATES. LETTERS MAY BE FLAME CUT, BUT EDGES MUST BE GRIND TRUE, SMOOTH AND EVEN. LETTERS SHALL BE GIVEN ONE SHOP COAT OF PAINT, SAME AS STRUCTURAL STEEL AND TWO FIELD COATS OF BLACK AUTO ENAMEL. LETTERS AND RODS FOR MOUNTING ENBLEM ON GIRDERS SHALL BE INCLUDED IN THE CONTRACT UNIT PRICE FOR RAILROAD EMBLEMS.  
FOR LOCATION OF LETTERS SEE SECT. A-A, SHG 5

ALFRED BEMISCH & ASSOCIATES  
CONSULTING ENGINEERS  
10 E. WABASH AVE. CHICAGO, ILLINOIS

**END FLOOR BEAM UNDERPASS**  
I.T.R.R. BRIDGE No. F-71.5  
OVER SOUTH 5<sup>TH</sup> STREET EXTENDED SPRINGFIELD, ILLINOIS  
PROJECT UG 166(40)  
SECTION 110X-75B  
SANGAMON COUNTY  
STATION 8+27.70

FILE NAME =	USER NAME = #USER#	DESIGNED -	REVISED -
#FILE#		DRAWN -	REVISED -
	PLT SCALE = #SCALE#	CHECKED -	REVISED -
	PLT DATE = #DATE#	DATE -	REVISED -

STATE OF ILLINOIS  
DEPARTMENT OF TRANSPORTATION

084-0033 (FOR INFORMATION ONLY)  
SCALE: SHEET NO. OF SHEETS STA. TO STA.

F.A.P. RITE.	SECTION	COUNTY	TOTAL SHEETS	SHEET NO.
666	D-5 PAINTING 2000P	SANGAMON	13	11
	2012			CONTRACT NO. 72C48
FED. ROAD DIST. NO. 6 ILLINOIS FED. AID PROJECT				