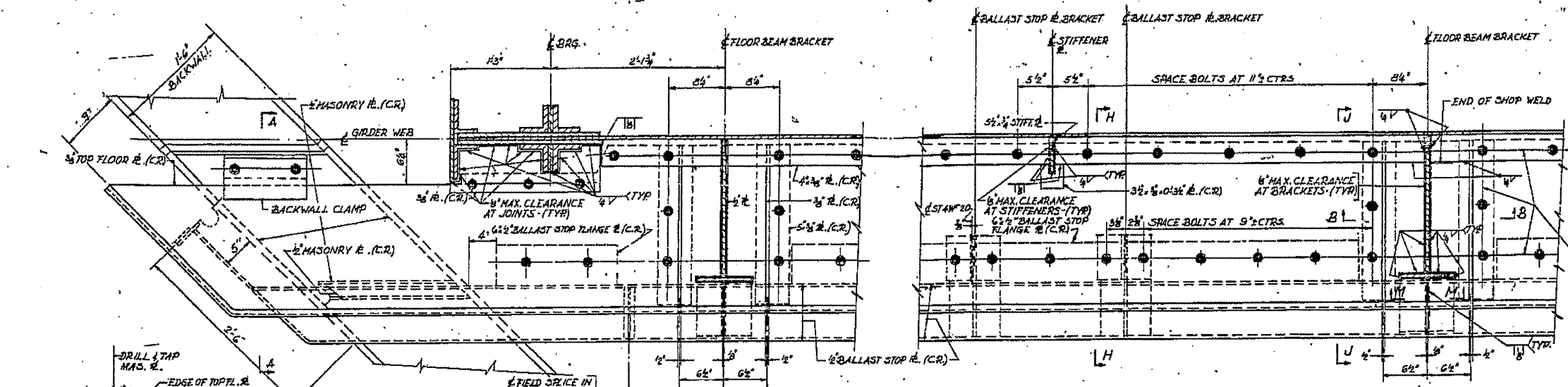


ROUTE NO.	SECTION	COUNTY	TOTAL SHEETS	SHEET NO.
EA. 5	10X-75B	SANGAMON	25	11
STA.	TO STA.			
F. P. E. NO. 1	ILLINOIS	PROJECT		
SHEET 7 OF 19				

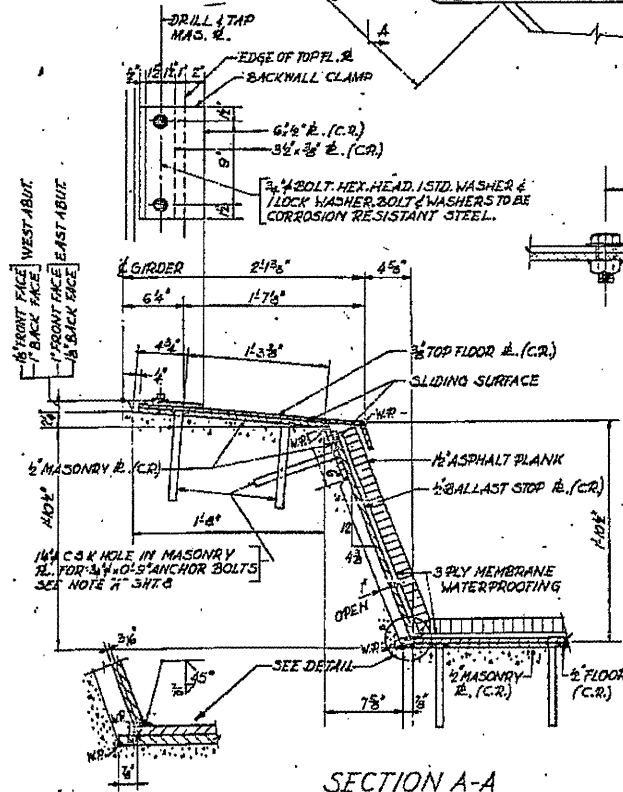


ALL BOLTS FOR CONNECTING TOP FLOOR PLATE TO BE 3/4" WITH HEX HEADS AND SELF-LOCKING NUTS WITH STD WASHERS SHOP WELD NUT TO UNDERSIDE OF LOWEST PLATE OR SHAPE TO BE 4"x4". HOLES IN UPPER PLATES TO BE 1/8" TO ALLOW FOR ADJUSTMENT.

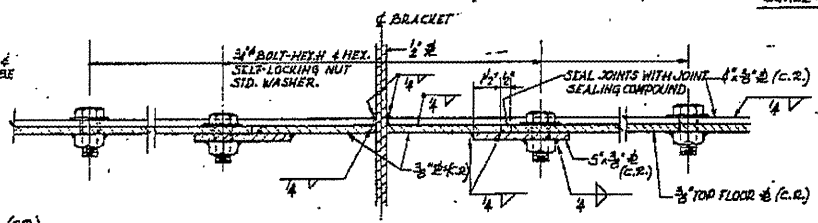
PARTIAL PLAN OF TOP FLOOR PLATE
SCALE: 1/4" = 1'-0"

NOTES:
FOR SECTIONS H-H, U-U, L-L, M-M SEE SHEET 5.

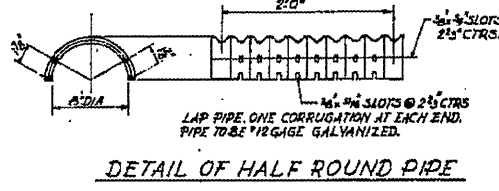
NOTE:
JOINTS IN TOP FLOOR PLATE SHALL BE SEALED WITH A GUN GRADE, GREY, TWO COMPONENT NON-STAINING SEALING COMPOUND WITH POLYSULFIDE LIQUID POLYMERS AFTER THE STRUCTURE HAS BEEN FIELD PAINTED.
THE COST OF FURNISHING AND APPLYING THE SEALING COMPOUND SHALL NOT BE PAID FOR SEPARATELY, BUT SHALL BE CONSIDERED INCIDENTAL TO THE CONTRACT.



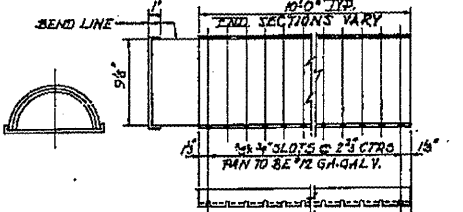
SECTION A-A
SCALE: 1/2" = 1'-0"



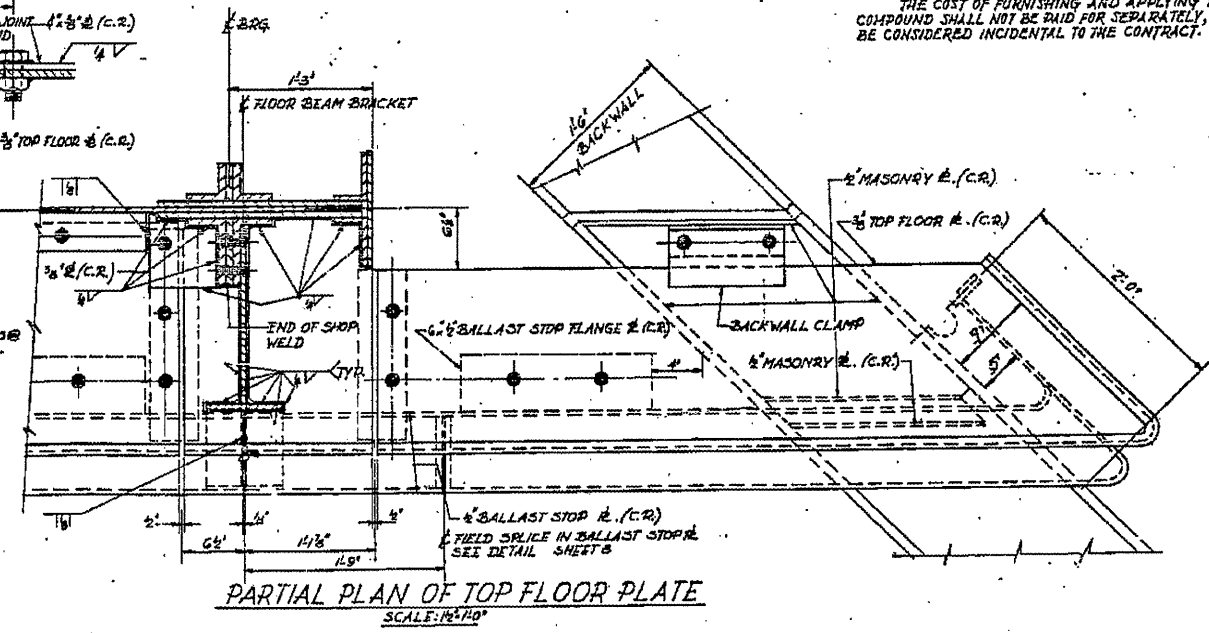
SECTION B-B
SCALE: 3/4" = 1'-0"



DETAIL OF HALF ROUND PIPE



DETAIL OF BOTTOM PAN
DETAILS OF DECK DRAIN



PARTIAL PLAN OF TOP FLOOR PLATE
SCALE: 1/4" = 1'-0"

UPPER FLOOR PLATE DETAILS
UNDERPASS
I.I.R.R. BRIDGE No. F-715
OVER SOUTH 5TH STREET EXTENDED, SPRINGFIELD, ILLINOIS
PROJECT UG 166 (40)
EA. ROUTE 5 SECTION 10X-75B
SANGAMON COUNTY
STATION 6+22.70

ALFRED BEMISH & ASSOCIATES
CONSULTING ENGINEERS
30 S. WILSON AVE. CHICAGO, ILLINOIS

FILE NAME =	USER NAME = #USER#	DESIGNED -	REVISED -
#FILE#		DRAWN -	REVISED -
		CHECKED -	REVISED -
		DATE -	REVISED -

STATE OF ILLINOIS
DEPARTMENT OF TRANSPORTATION

084-0033 (FOR INFORMATION ONLY)
SCALE: SHEET NO. OF SHEETS STA. TO STA.

F.P. RTE.	SECTION	COUNTY	TOTAL SHEETS	SHEET NO.
666	D-5 PAINTING 2000*	SANGAMON	13	12
2012			CONTRACT NO. 72C48	
FED. ROAD DIST. NO. 6 (ILLINOIS FED. AID PROJECT)				