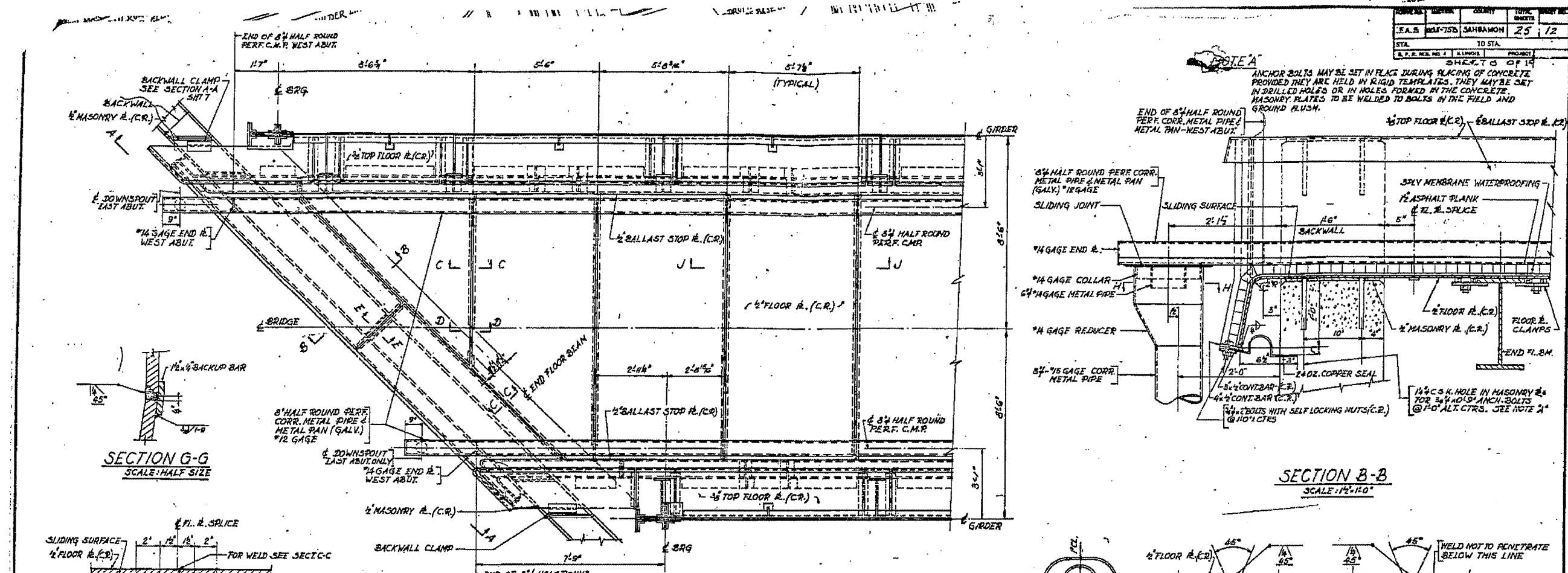


PROJECT NO.	SECTION	COUNTY	TOTAL SHEETS	SHEET NO.
F.A.S. 100-75B	SAHAGAMON	25	12	
STA.	TO STA.			



SECTION G-G  
SCALE: HALF SIZE

SECTION B-B  
SCALE: 1/4"=1'-0"

SECTION E-E  
SCALE: HALF SIZE

SECTION H-H  
SCALE: 1/2"=1'-0"

SECTION C-C  
SECTION K-K-SIMILAR  
SCALE: HALF SIZE

SECTION D-D  
SCALE: HALF SIZE

TYPICAL FIELD SPLICE FOR BALLAST STOP PLATE  
SCALE: 3/4"=1'-0"

SECTION A-A  
SCALE: 3/4"=1'-0"

SECTION F-F  
SCALE: 1/2"=1'-0"

SECTION J-J  
SCALE: 3/4"=1'-0"

DETAIL OF 24 OZ. COPPER SEAL  
SCALE: 1/2"=1'-0"

FLOOR PLATE DETAILS  
UNDERPASS  
I.T.R.R. BRIDGE No. F-11.5  
OVER SOUTH 5<sup>TH</sup> STREET EXTENDED SPRINGFIELD, ILLINOIS  
PROJECT UG 166 (40)  
F.A. ROUTE 5 SECTION 10X-75B  
SANGAMON COUNTY  
STATION B+22.70

ALPHEE BISHOP & ASSOCIATES  
CONSULTING ENGINEERS  
101 S. WABASH AVE. CHICAGO, ILLINOIS

NOTE:  
COPPER SEAL SHALL BE PERFORATED AND BE 24 OZ. COLD ROLLED ANNEALED COPPER. COPPER SEAL SHALL BE CONTINUOUS ALONG EACH SIDE OF JOINT. SPLICES SHALL BE SOLDERED OR BRAZED.

FILE NAME =	USER NAME = *USER*	DESIGNED -	REVISED -
*FILE.L*		DRAWN -	REVISED -
		CHECKED -	REVISED -
		DATE -	REVISED -

STATE OF ILLINOIS  
DEPARTMENT OF TRANSPORTATION

084-0033 (FOR INFORMATION ONLY)  
SCALE: SHEET NO. OF SHEETS STA. TO STA.

F.A.P. RTE.	SECTION	COUNTY	TOTAL SHEETS	SHEET NO.
666	D-6 PAINTING 2008	SANGAMON	13	13
	2012			
FED. ROAD DIST. NO. 6	ILLINOIS FED. AID PROJECT			