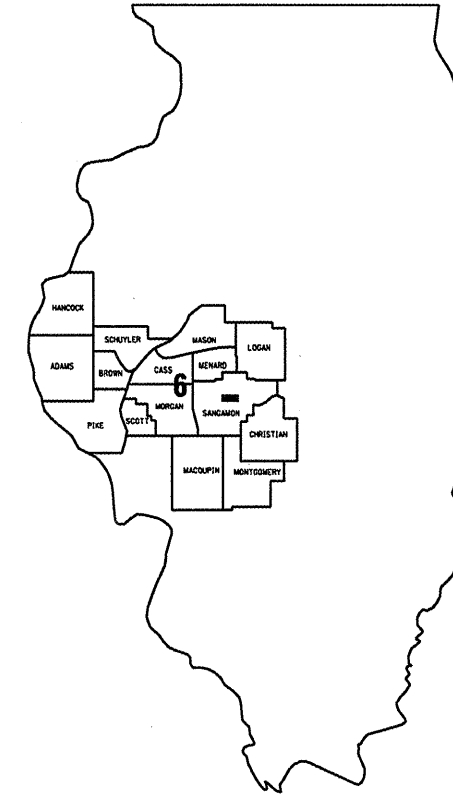


FOR INDEX OF SHEETS AND HIGHWAY  
STANDARDS, SEE SHEET 2.

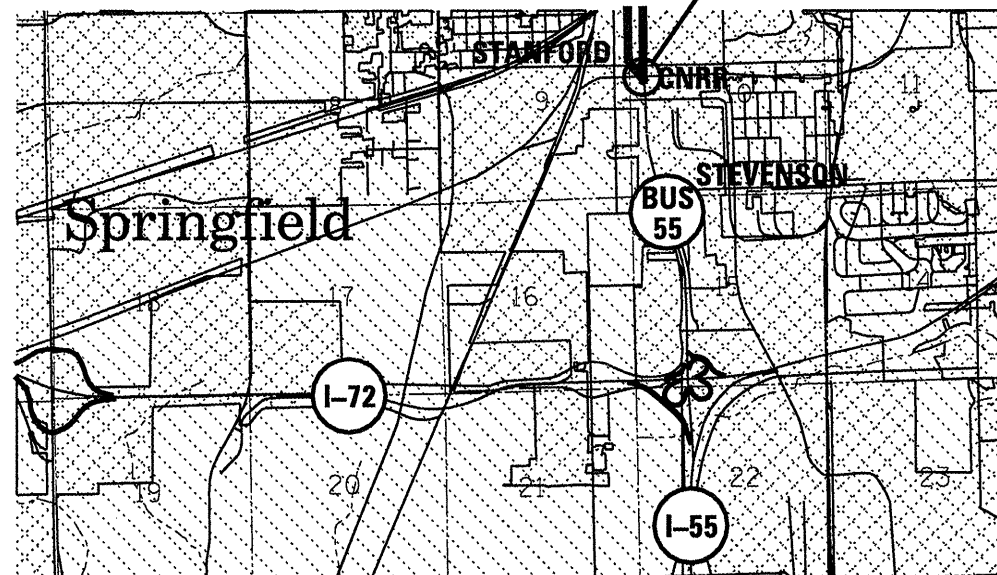
STATE OF ILLINOIS  
DEPARTMENT OF TRANSPORTATION  
DIVISION OF HIGHWAYS

CONTRACT: 72C48  
SHEET 1 OF 13

**PLANS FOR PROPOSED  
BRIDGE PAINTING**  
**FAP ROUTE 666 (BUS 55)**  
**SECTION D6 PAINTING 2012**  
**SANGAMON COUNTY**  
C-96-027-09



BRIDGE NO 1 - SN 084-9900 (OVER BUS 55 NB)  
BRIDGE NO 2 - SN 084-0033 (OVER BUS 55 SB)



LOCATION OF SECTION INDICATED THUS: ■■■

STATE OF ILLINOIS  
DEPARTMENT OF TRANSPORTATION  
DIVISION OF HIGHWAYS

SUBMITTED March 29 20 11

Regan Z. Omsick  
DEPUTY DIRECTOR OF HIGHWAYS, REGION FOUR ENGINEER

May 13 20 11  
Scott E. Stitt, P.E.  
acting ENGINEER OF DESIGN AND ENVIRONMENT

May 13 20 11  
Christine M. Reed  
DIRECTOR, DIVISION OF HIGHWAYS

J. U. L. I. E.  
JOINT UTILITY LOCATION INFORMATION FOR EXCAVATION  
1-800-892-0123

BRIDGE INSPECTION ENGINEER: DAVE COPENBARGER  
PHONE: (217) 785-5306  
BRIDGE MAINTENANCE ENGINEER: STEVE BERAN  
PHONE: (217) 785-9290

NET LENGTH OF SEC 24 FT = 0.005 MILE

**CONTRACT NO. 72C48**

PRINTED BY AUTHORITY OF THE STATE OF ILLINOIS

INDEX OF SHEETS:

- 1 COVER SHEET
- 2 INDEX, HIGHWAY STANDARDS, & GENERAL NOTES
- 3 SUMMARY OF QUANTITIES
- 4-6 EXISTING PLANS, SN 084-9900
- 7-13 EXISTING PLANS, SN 084-0033

STANDARDS

- 701101-02
- 701106-02
- 701601-07
- 701701-07
- 701901-01
- 701801-04

GENERAL NOTES:

CLEANING AND PAINTING OF THE EXISTING STRUCTURAL STEEL SHALL BE AS SPECIFIED IN THE SPECIAL PROVISIONS FOR "CLEANING AND PAINTING EXISTING STEEL STRUCTURES". THE EXTERIOR OF THE FASCIA BEAMS, INCLUDING THE TOP AND BOTTOM FLANGES, SHALL BE CLEANED PER NEAR WHITE BLAST CLEANING - SSPC-SP10. THE EXTERIOR OF THE FASCIA BEAMS, INCLUDING THE TOP AND BOTTOM FLANGES, SHALL BE PAINTED ACCORDING TO THE REQUIREMENTS OF PAINT SYSTEM 5 - MCU. NO OTHER STEEL ON THE STRUCTURES WILL REQUIRE ANY CLEANING OR PAINTING.

THE COLOR OF THE FINAL FINISH COAT FOR EXTERIOR AND BOTTOM FLANGE OF THE FASCIA BEAMS SHALL BE GRAY, MUNSELL NO 5B 7/1.

THE SSPC-QP-1 AND SSPC-QP2 PAINTING CONTRACTOR CERTIFICATIONS WILL BE REQUIRED FOR THESE BRIDGES.

THE USE OF AIR MONITORS WILL BE REQUIRED: TWO MONITORS WILL BE REQUIRED FOR EACH BRIDGE.

STRUCTURE NO 1 = 084-9900, STRUCTURE NO 2 = 084-0033

<p>STATE OF ILLINOIS DEPARTMENT OF TRANSPORTATION DIVISION OF HIGHWAYS DISTRICT 6</p>	
EXAMINED	<p>March 21 20 11</p> <p><i>Chris Walden</i></p> <p>ENGINEER OF OPERATIONS</p>
EXAMINED	<p>MARCH 16 20 11</p> <p><i>Tommy Felt</i></p> <p>ENGINEER OF PROJECT IMPLEMENTATION</p>
EXAMINED	<p>MARCH 23 20 11</p> <p><i>John C. Weyant</i></p> <p>ENGINEER OF PROGRAM DEVELOPMENT</p>

INDEX, STANDARDS, & NOTES  
FAP 666 (BUS 55)  
D6 PAINTING 2012  
SANGAMON COUNTY

S U M M A R Y O F Q U A N T I T I E S

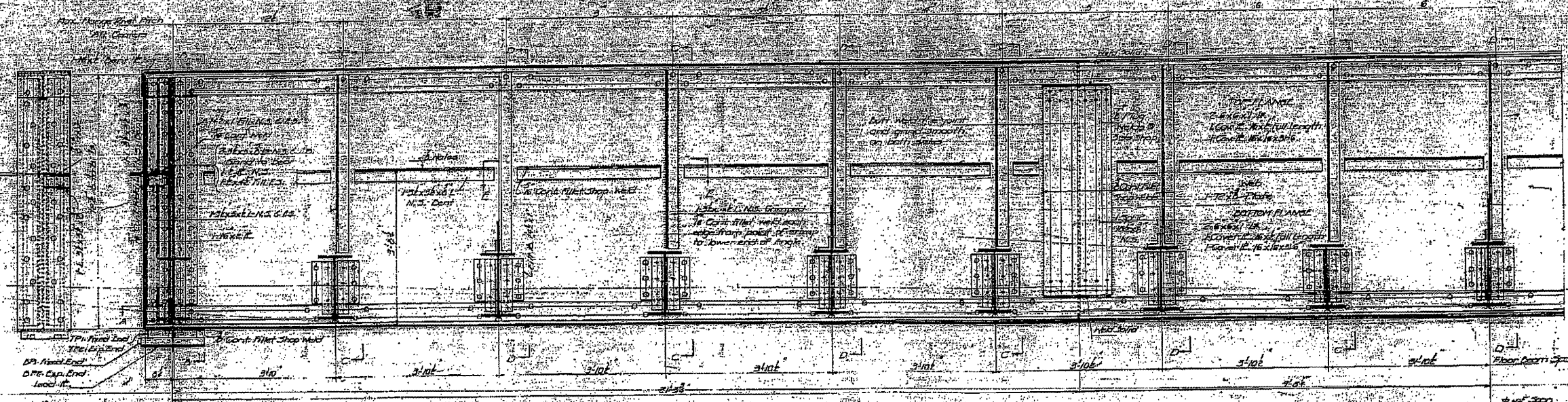
CODE NO.	ITEM	UNIT	URBAN
			100% STATE
			0014 TOTAL QTY
67100100	MOBILIZATION	L SUM	1
70102630	TRAFFIC CONTROL AND PROTECTION, STANDARD 701601	L SUM	1
70102635	TRAFFIC CONTROL AND PROTECTION, STANDARD 701701	L SUM	1
Z0010501	CLEANING AND PAINTING STEEL BRIDGE NO. 1	L SUM	1
Z0010502	CLEANING AND PAINTING STEEL BRIDGE NO. 2	L SUM	1
Z0007101	CONTAINMENT AND DISPOSAL OF LEAD PAINT CLEANING RESIDUES NO. 1	L SUM	1
Z0007102	CONTAINMENT AND DISPOSAL OF LEAD PAINT CLEANING RESIDUES NO. 2	L SUM	1
70106800	CHANGEABLE MESSAGE SIGNS	CAL MO	2
70102640	TRAFFIC CONTROL AND PROTECTION, STANDARD 701801	L SUM	1
Z0048665	RAILROAD PROTECTIVE LIABILITY INSURANCE	L SUM	1
Z0026346	NIGHTIME WORK ZONE LIGHTING	L SUM	1

QUANTITIES  
FAP 666 (BUS 55)  
D6 PAINTING 2012  
SANGAMON COUNTY

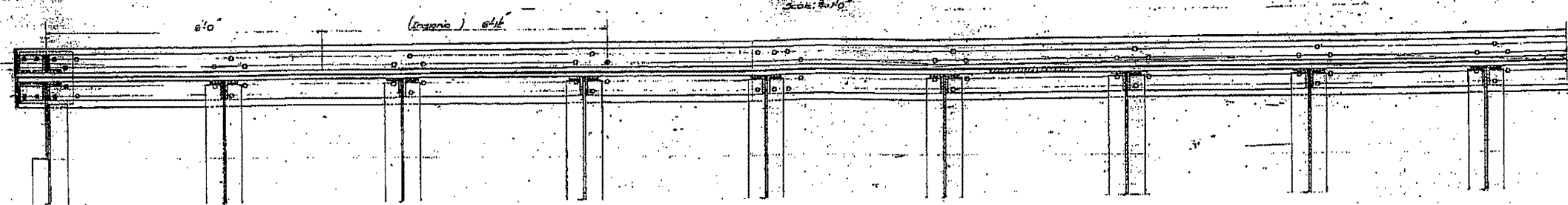


STATE OF ILLINOIS  
DEPARTMENT OF PUBLIC WORKS & BUILDINGS  
DIVISION OF HIGHWAYS

SECTION	126	SECTION	110-5B	COUNTY	Sangamon	SHEET NO.	15	TOTAL SHEETS	34
---------	-----	---------	--------	--------	----------	-----------	----	--------------	----



ELEVATION  
Scale: 1/4" = 1'-0"



SECTION-A

Note:  
Bridges symmetrical about center line unless otherwise noted.

Approx. Height of Structure Shown in Elevation View = 20000 Feet

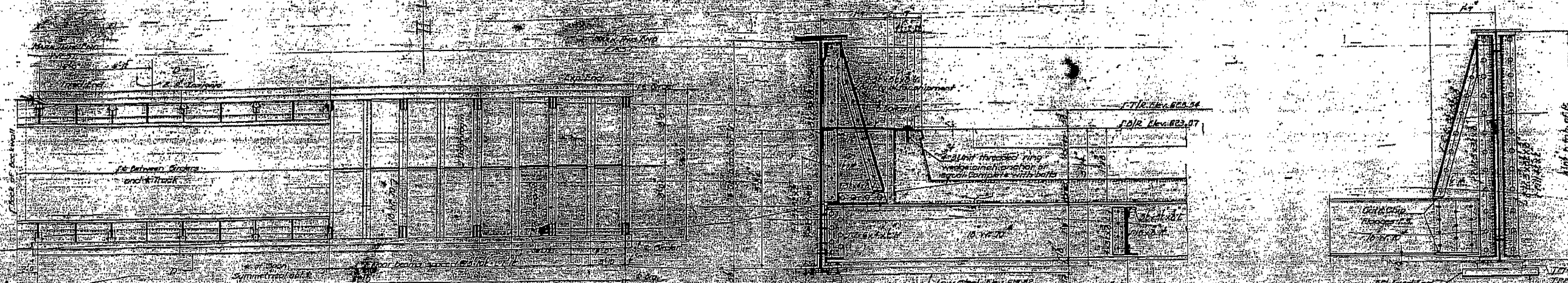
DESIGNED BY: [Signature]  
DRAWN BY: [Signature]  
CHECKED BY: [Signature]  
DATE: August 22, 1947

7 PG. SPAN  
GRADE SEPARATION  
ILLINOIS TERMINAL RAILROAD  
SOUTH 6<sup>TH</sup> STREET (U.S. 66)  
SPRINGFIELD ILLINOIS  
PRO. DIST. 110-5B (19)  
F.A. ROUTE 110-5B  
SANGAMON COUNTY

FILE NAME #	USER NAME #	DESIGNED -	REVISOR -	STATE OF ILLINOIS DEPARTMENT OF TRANSPORTATION	004-9900 (FOR INFORMATION ONLY)	F.A.P. RTE. 656	SECTION D-6 PAINTING 2088	COUNTY SANGAMON	TOTAL SHEETS 13	SHEET NO. 5
#FILE#	#USER#	DRAWN -	REVISOR -	SCALE: _____	SHEET NO. _____ OF _____ SHEETS STA. _____ TO STA. _____	CONTRACT NO. 72C48				
		CHECKED -	REVISOR -			FED. ROAD DIST. NO. 6 (ILLINOIS) FED. AID PROJECT				
		DATE -	REVISOR -							

STATE OF ILLINOIS  
DEPARTMENT OF PUBLIC WORKS & BUILDINGS  
DIVISION OF HIGHWAYS

SECTION	COUNTY	SHEET NO.	TOTAL SHEETS
116	Springfield	37	16



MAIN PLAN  
Scale: 1/4" = 1'-0"

MAIN PLAN  
Scale: 1/4" = 1'-0"

MAIN SECTION D-D  
Scale: 1/4" = 1'-0"

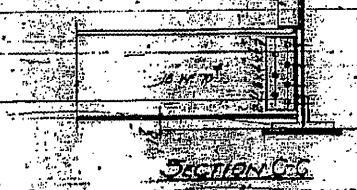
SECTION D-D  
Scale: 1/4" = 1'-0"



TYPICAL SECTION E-E  
Scale: 1/4" = 1'-0"

DETAILS OF PLATE TYPIC  
Scale: 1/4" = 1'-0"

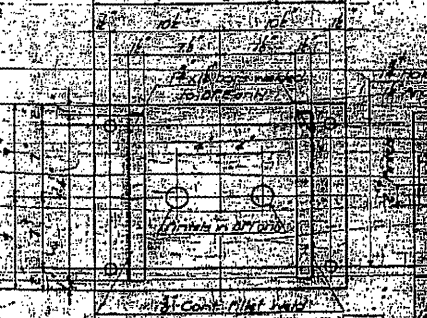
DETAILS OF INSIGNIA  
Scale: 1/4" = 1'-0"



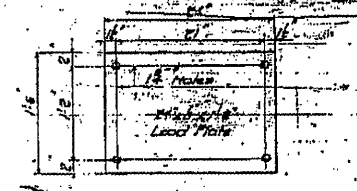
SECTION C-C  
Scale: 1/4" = 1'-0"



DETAIL OF TYPICAL DIAPHRAGM  
Scale: 1/4" = 1'-0"



DETAILS OF PLATES B & B'  
Scale: 1/4" = 1'-0"



DETAIL OF LEAD PLATE  
Scale: 1/4" = 1'-0"

DETAIL OF PINTLE  
Scale: 1/4" = 1'-0"

**GENERAL NOTES**

1. Design workmanship and materials shall conform to the specifications of the American Institute of Steel Construction, Inc., and the American Institute of Welding, Inc., as shown on the drawings.

2. All steel shall be A36 or A572 Gr. 50, unless otherwise noted.

3. All welding shall conform to the specifications of the American Institute of Welding, Inc., as shown on the drawings.

4. The contractor shall be responsible for the proper installation and maintenance of the bridge.

5. Inspection shall be made by the State of Illinois Department of Transportation, Springfield, Illinois.

**DETAIL OF P.G. SPAN**  
GRADE SEPARATION  
ILLINOIS CENTRAL RAILROAD  
SOUTH 6<sup>TH</sup> STREET (U.S. 66)  
SPRINGFIELD, ILLINOIS  
PROLIFER (2008)  
R.A. ROUTE 5  
SANGAMON COUNTY

COMPUTED	10/2/10
CHECKED	William P. Nisley
DRAWN	WJW
CHECKED	WJW
APPROVED	WJW

EXAMINED August 22, 2012  
PASSED  
APPROVED

FILE NAME	USER NAME	DESIGNED	REVISED
#FILE#	#USER#	---	---
		DRAWN	REVISED
		---	---
		CHECKED	REVISED
		---	---
		DATE	REVISED
		---	---

STATE OF ILLINOIS  
DEPARTMENT OF TRANSPORTATION

084-9900 (FOR INFORMATION ONLY)

SCALE: SHEET NO. OF SHEETS STA. TO STA.

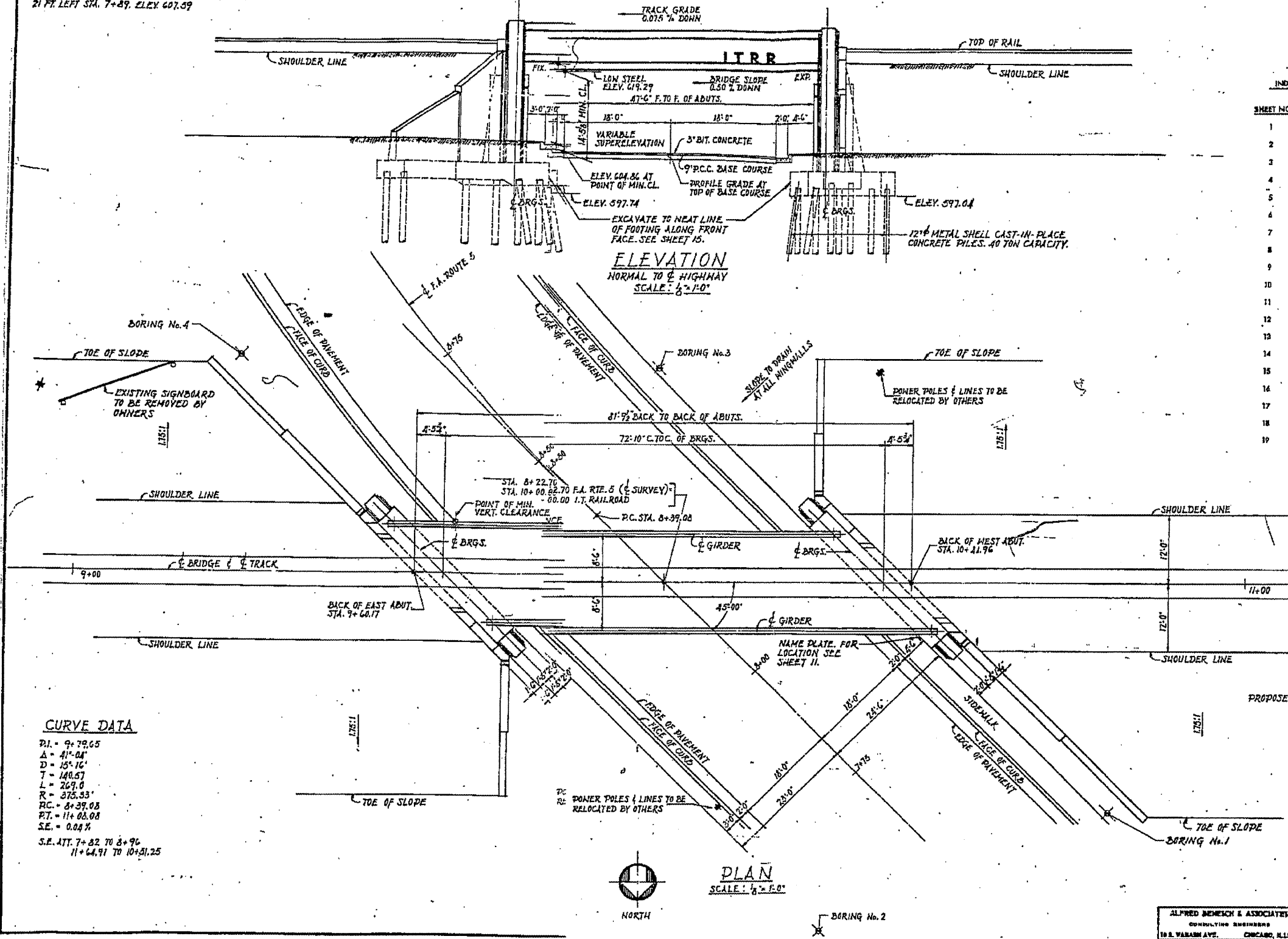
F.A.P. RTE.	SECTION	COUNTY	TOTAL SHEETS	SHEET NO.
566	D-5 PAINTING 2008	SANGAMON	13	6
	2012			

BENCH MARK No. 1  
HORIZONTAL RAILROAD SPIKE IN POWER POLE  
21 FT. LEFT STA. 7+89. ELEV. 607.59

084-0033

SECTION	COUNTY	TOTAL SHEETS	SHEET NO.
F.A. 5	110X-75B	SANGAMON	25
STA.	TO STA.	PROJECT	

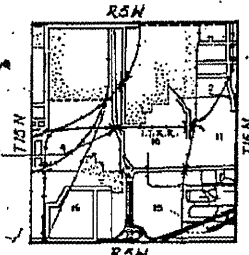
SHEET 1 of 19



INDEX OF BRIDGE PLANS

SHEET NO.	DESCRIPTION
1	GENERAL PLAN & ELEVATION
2	BORINGS, PROFILES, GENERAL NOTES, DESIGN DATA & QUANTITIES
3	STEEL FRAMING PLAN
4	GRIDER DETAILS
5	TYPICAL DECK CROSS SECTION
6	END FLOOR BEAM
7	UPPER FLOOR PLATE DETAILS
8	FLOOR PLATE DETAILS
9	BEARINGS
10	ABUTMENT FOOTING PLAN
11	WEST ABUTMENT
12	EAST ABUTMENT
13	ABUTMENT DETAILS
14	REINFORCEMENT BAR LISTS
15	EXCAVATION & DRAINAGE DETAILS
16	PLAN & ELEVATION OF TEMPORARY TRESTLE
17	TEMPORARY TRESTLE STEEL SPAN DETAILS
18	TEMPORARY TRESTLE DETAILS
19	TEMPORARY TRESTLE DETAILS

**CURVE DATA**  
 P.I. = 9+79.65  
 Δ = 41°-04'  
 D = 15°-16'  
 T = 140.67  
 L = 267.0  
 R = 375.33  
 P.C. = 8+39.08  
 P.T. = 11+68.08  
 S.E. = 0.04 %  
 S.E. ATT. 7+82 TO 8+96  
 11+64.91 TO 10+51.25



LOCATION PLAN  
084-0033

GENERAL PLAN & ELEVATION  
UNDERPASS  
I.T.R.R. BRIDGE No. F-77.5  
OVER SOUTH 5<sup>TH</sup> STREET EXTENDED SPRINGFIELD, ILLINOIS  
PROJECT UG 166(40)  
F.A. ROUTE 5 SECTION 110X-75B  
SANGAMON COUNTY  
STATION 8+22.70

ALFRED BEMISCH & ASSOCIATES  
CONSULTING ENGINEERS  
188 WABASH AVE. CHICAGO, ILLINOIS

FILE NAME =	USER NAME = #USER#	DESIGNED -	REVISIONS -
#FILE#		DRAWN -	REVISIONS -
		CHECKED -	REVISIONS -
		DATE -	REVISIONS -

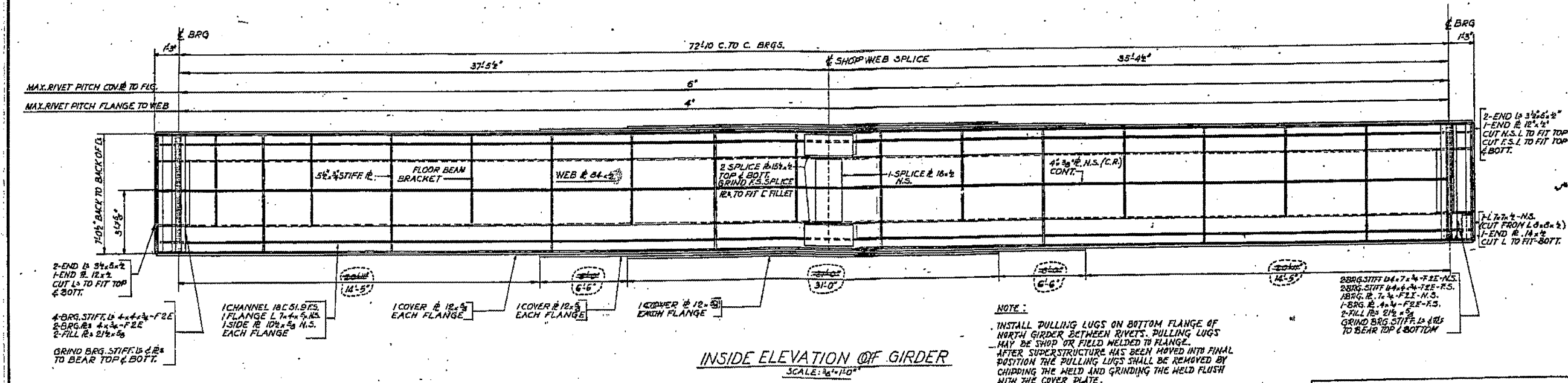
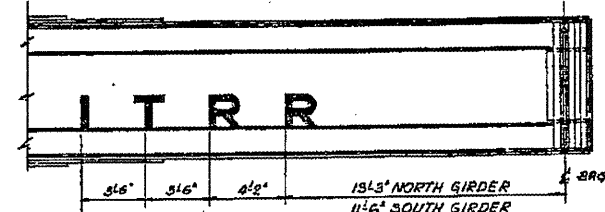
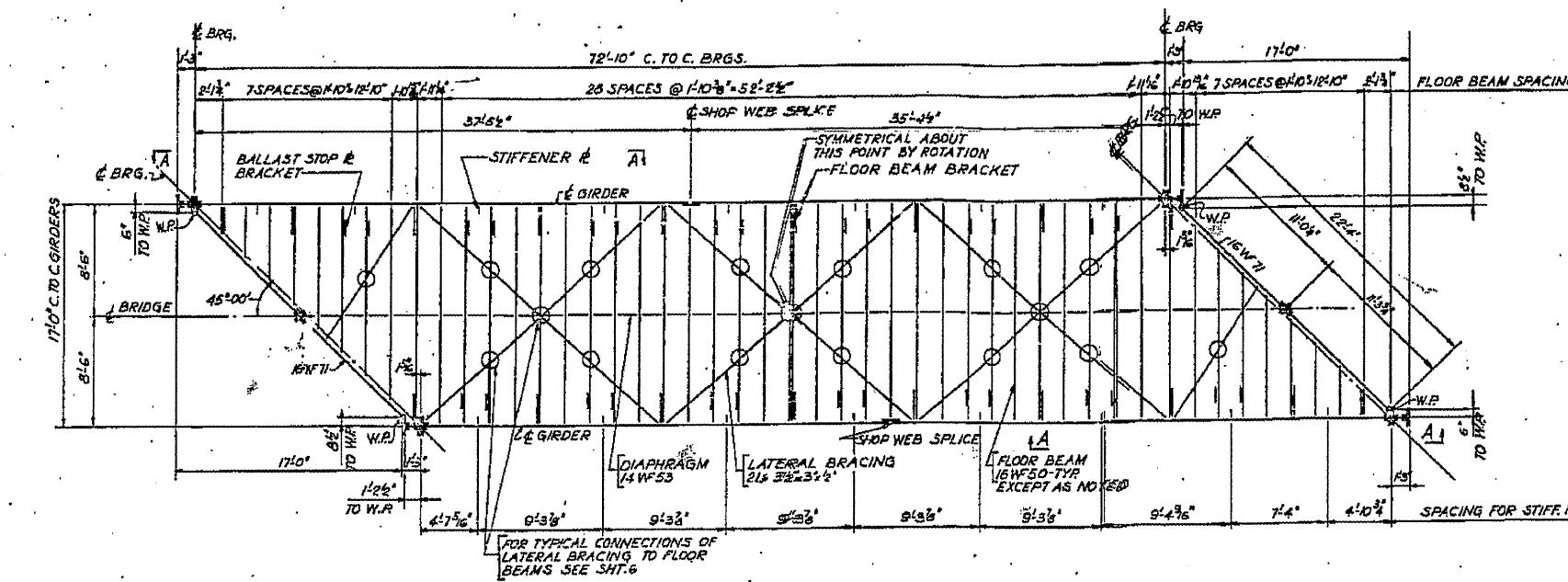
STATE OF ILLINOIS  
DEPARTMENT OF TRANSPORTATION

084-0033 (FOR INFORMATION ONLY)  
SCALE: \_\_\_\_\_ SHEET NO. \_\_\_\_ OF \_\_\_\_ SHEETS STA. \_\_\_\_\_ TO STA. \_\_\_\_\_

F.A.P. RTE.	SECTION	COUNTY	TOTAL SHEETS	SHEET NO.
666	D-6 PAINTING 2008'	SANGAMON	13	7
			CONTRACT NO. T2C48	

FED. ROAD DIST. NO. 6 ILLINOIS FED. AID PROJECT

ROUTE NO.	SECTION	COUNTY	TOTAL SHEETS	SHEET NO.
F.A. 5	110X-75 B	SANGAMON	25	7
STA.	TO STA.			
SHEET 5 OF 19				



**STEEL FRAMING PLAN**  
**UNDERPASS**  
I.T.R.R. BRIDGE No. F-71.5  
OVER SOUTH 5th STREET EXTENDED SPRINGFIELD, ILLINOIS  
PROJECT UG 166(40)  
F.A. ROUTE 5 SECTION 110X-75 B  
SANGAMON COUNTY  
STATION 8+72.10

ALFRED BENECH & ASSOCIATES  
CONSULTING ENGINEERS  
161 S. WABASH AVE. CHICAGO, ILLINOIS

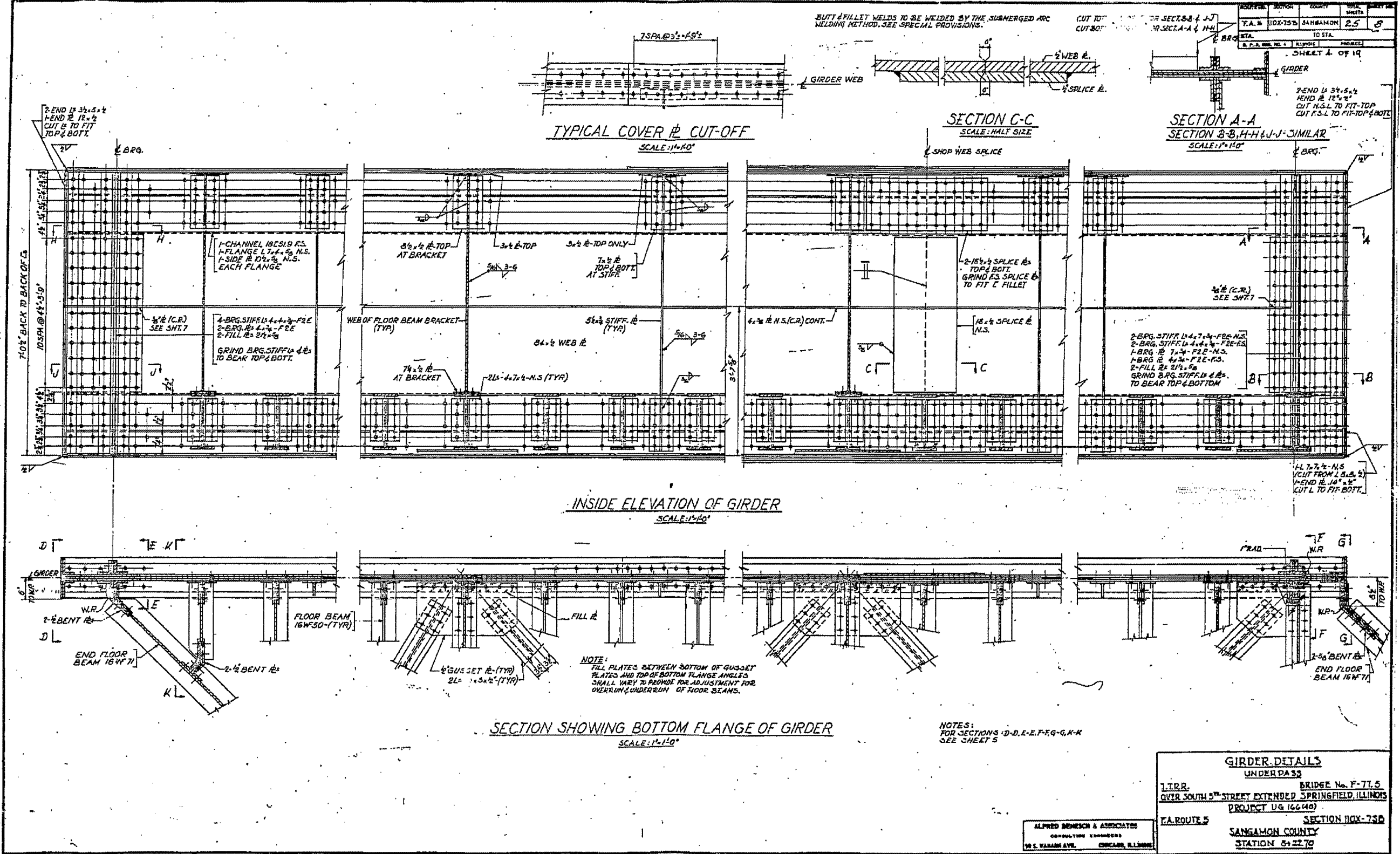
FILE NAME =	USER NAME = #USER#	DESIGNED -	REVISED -
#FILE#		DRAWN -	REVISED -
		CHECKED -	REVISED -
		DATE -	REVISED -

STATE OF ILLINOIS  
DEPARTMENT OF TRANSPORTATION

084-0033 (FOR INFORMATION ONLY)  
SCALE: SHEET NO. OF SHEETS STA. TO STA.

F.A.P. RTE.	SECTION	COUNTY	TOTAL SHEETS	SHEET NO.
666	D-6 PAINTING 2089	SANGAMON	13	8
2012		CONTRACT NO. 72048		
FED. ROAD DIST. NO. 6 ILLINOIS FED. AID PROJECT				





PROJECT NO.	SECTION	COUNTY	TOTAL SHEETS
T.A. 5	10X-75B	SANGAMON	25
STA.	TO STA.	PROJECT	
6+22.70			

SHEET 4 OF 19

2- END IS 34'-5 1/2"  
1- END IS 18'-2"  
CUT L TO FIT TOP & BOT.

2- END IS 34'-5 1/2"  
1- END IS 18'-2"  
CUT N.S.L. TO FIT TOP  
CUT F.S.L. TO FIT TOP & BOT.

1- CHANNEL 18S19 FS.  
1- FLANGE L 14 1/2" N.S.  
1- SIDE IS 10 1/2" N.S.  
EACH FLANGE

1- BRG. STIFF. 4 1/2" x 7/8" F2E  
2- BRG. STIFF. 4 1/2" x 7/8" F2E  
2- FILL IS 2 1/2" x 3/8"

GRIND BRG. STIFF. 4 1/2" x 7/8" TO BEAR TOP & BOT.

2- BRG. STIFF. 4 1/2" x 7/8" F2E N.S.  
2- BRG. STIFF. 4 1/2" x 7/8" F2E FS.  
1- BRG. IS 7 1/4" x 7/8" F2E N.S.  
1- BRG. IS 7 1/4" x 7/8" F2E FS.  
2- FILL IS 2 1/2" x 3/8"  
GRIND BRG. STIFF. 4 1/2" x 7/8" TO BEAR TOP & BOTTOM

1/2" (C.R.) SEE SH. 7

1/2" (C.R.) CONT.

2- 15 1/2" SPLICE IS TOP & BOT. GRIND IS SPLICE IS TO FIT C FILLET

1/2" (C.R.) SEE SH. 7

1/2" (C.R.) SEE SH. 7

1/2" (C.R.) SEE SH. 7

1/2" (C.R.) SEE SH. 7

1/2" (C.R.) SEE SH. 7

1/2" (C.R.) SEE SH. 7

FILE NAME	USER NAME	DESIGNED	REVISED
#FILE#	#USER#	---	---
		DRAWN	REVISED
		---	---
		CHECKED	REVISED
		---	---
		DATE	REVISED
		---	---

STATE OF ILLINOIS  
DEPARTMENT OF TRANSPORTATION

084-0033 (FOR INFORMATION ONLY)

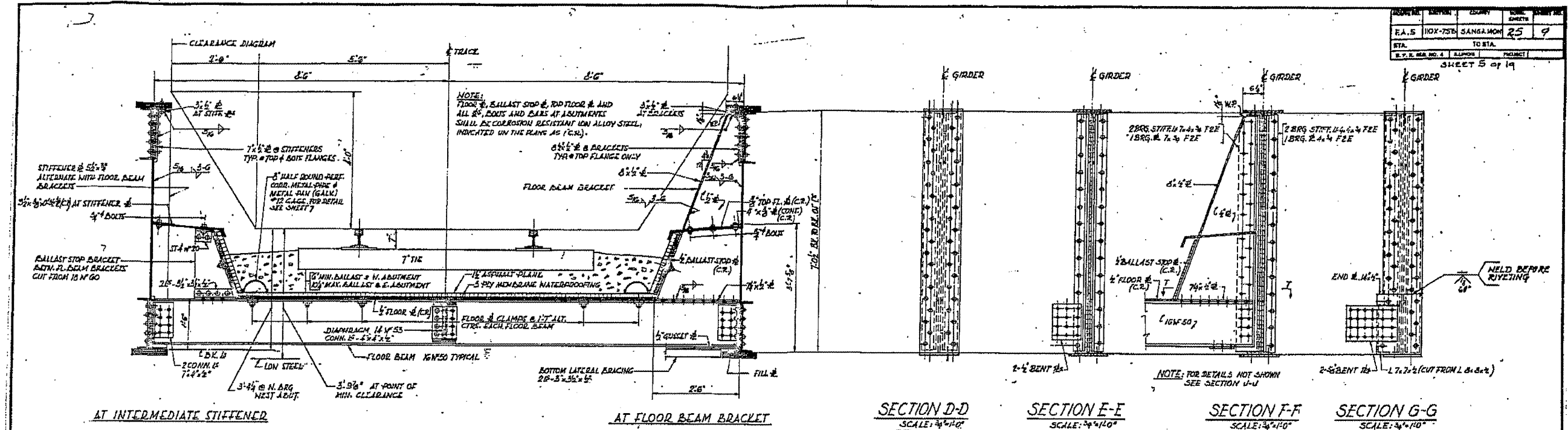
SCALE: SHEET NO. OF SHEETS STA. TO STA.

F.A.P. RTE.	SECTION	COUNTY	TOTAL SHEETS
666	D-6 PAINTING 2000-	SANGAMON	13
	2012	CONTRACT NO. 72048	
FED. ROAD DIST. NO. 6 ILLINOIS FED. AID PROJECT			

ALFRED BENESH & ASSOCIATES  
CONSULTING ENGINEERS  
10 E. WABASH AVE. CHICAGO, ILLINOIS

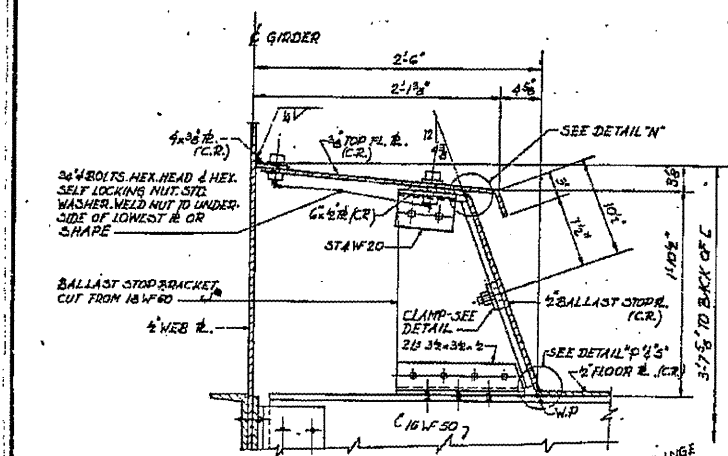
**GIRDER DETAILS**  
UNDERPASS  
I.T.R. BRIDGE No. F-71.5  
OVER SOUTH 5<sup>TH</sup> STREET EXTENDED SPRINGFIELD, ILLINOIS  
PROJECT UG (6640)  
SECTION 10X-75B  
SANGAMON COUNTY  
STATION 6+22.70

PROJECT NO.	SECTION	COUNTY	TOTAL SHEETS	SHEET NO.
110X-75B	SANGAMON	25	9	
STA.	TO STA.	PROJECT		
8+22.70		SHEET 5 of 19		

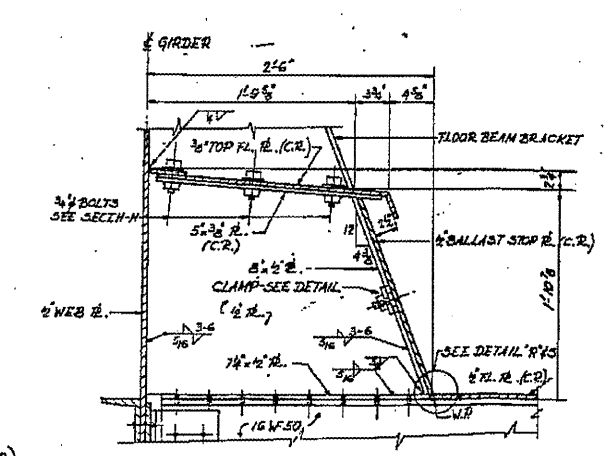


TYPICAL DECK CROSS SECTION  
SCALE: 3/4"=1'-0"

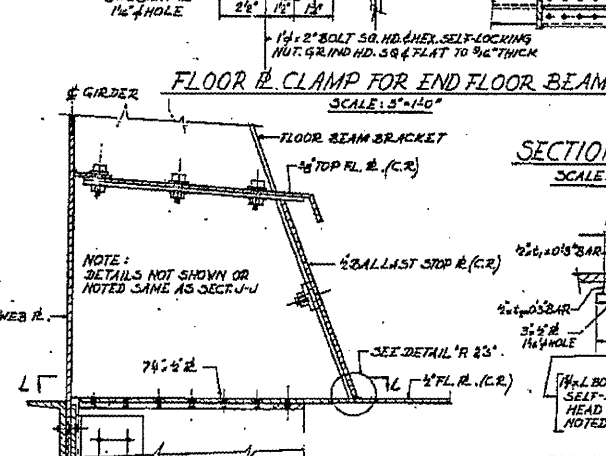
SECTION D-D SCALE: 3/4"=1'-0"  
SECTION E-E SCALE: 3/4"=1'-0"  
SECTION F-F SCALE: 3/4"=1'-0"  
SECTION G-G SCALE: 3/4"=1'-0"



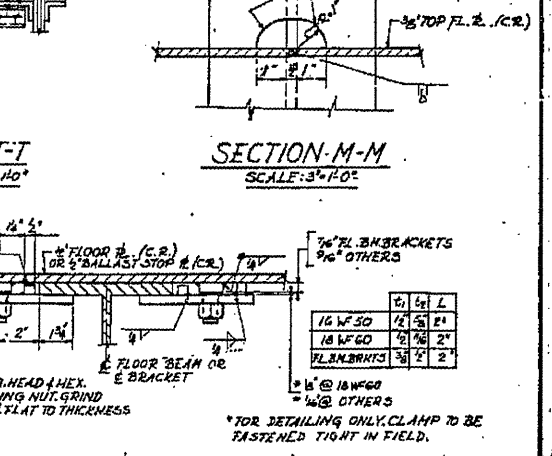
SECTION H-H  
SCALE: 1/2"=1'-0"



SECTION J-J  
SCALE: 1/2"=1'-0"



SECTION K-K  
SCALE: 1/2"=1'-0"



TYPICAL FLOOR BEAM & BALLAST STOP CLAMP  
SCALE: 3/4"=1'-0"



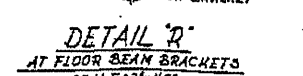
DETAIL 'N'  
SCALE: 3/4"=1'-0"



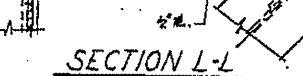
DETAIL 'P'  
SCALE: 3/4"=1'-0"



DETAIL 'S'  
SCALE: 3/4"=1'-0"



DETAIL 'R'  
SCALE: 3/4"=1'-0"



SECTION L-L  
SCALE: 1/2"=1'-0"

TYPICAL DECK CROSS SECTION  
UNDERPASS  
I.T.R.R.  
BRIDGE No. F-17.5  
OVER SOUTH 5<sup>TH</sup> STREET EXTENDED SPRINGFIELD, ILLINOIS  
PROJECT UG 166 (40)  
SECTION 110X-75B  
F.A. ROUTE 5  
SANGAMON COUNTY  
STATION 8+22.70

ALFRED BENESH & ASSOCIATES  
CONSULTING ENGINEERS  
101 E. WABASH AVE. CHICAGO, ILLINOIS

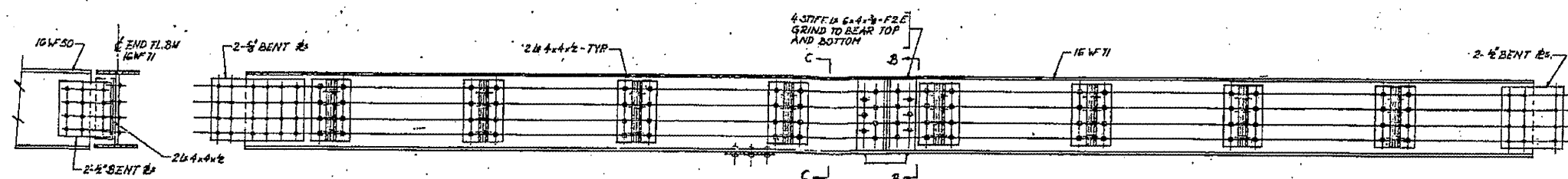
FILE NAME =	USER NAME = #USER#	DESIGNED -	REVISED -
#FILE#		DRAWN -	REVISED -
		CHECKED -	REVISED -
		DATE -	REVISED -

STATE OF ILLINOIS  
DEPARTMENT OF TRANSPORTATION

084-0033 (FOR INFORMATION ONLY)
SCALE: _____ SHEET NO. _____ OF _____ SHEETS STA. _____ TO STA. _____

F.A.P. RTE.	SECTION	COUNTY	TOTAL SHEETS	SHEET NO.
666	D-6 PAINTING 2008	SANGAMON	13	10
2012		CONTRACT NO. 72C4B		
FED. ROAD DIST. NO. 6 ILLINOIS FED. AID PROJECT				

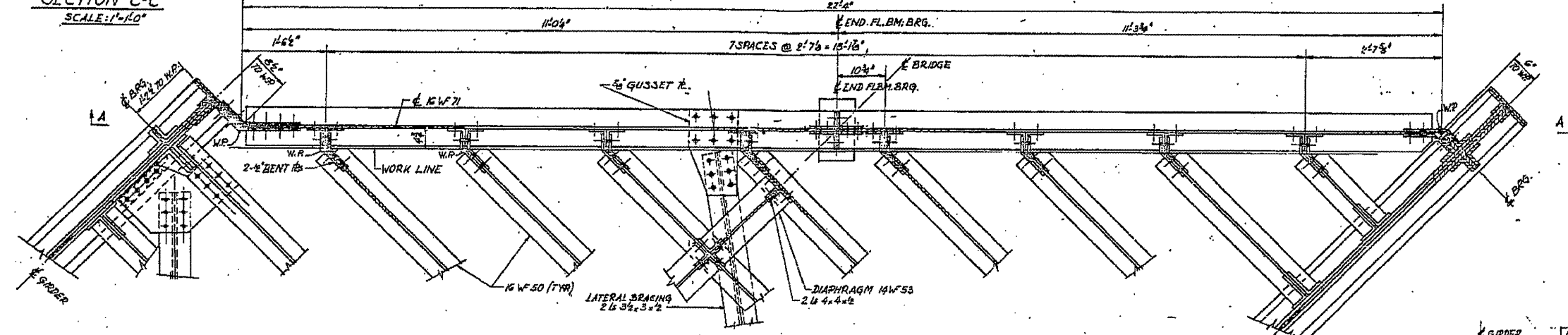
SECTION	COUNTY	TOTAL SHEETS	SHEET NO.
E.A.S. 110X-75B	SANGAMON	25	10
STA.	TO STA.		
E.A.S. FOR NO. 4	ILLINOIS PROJECT		



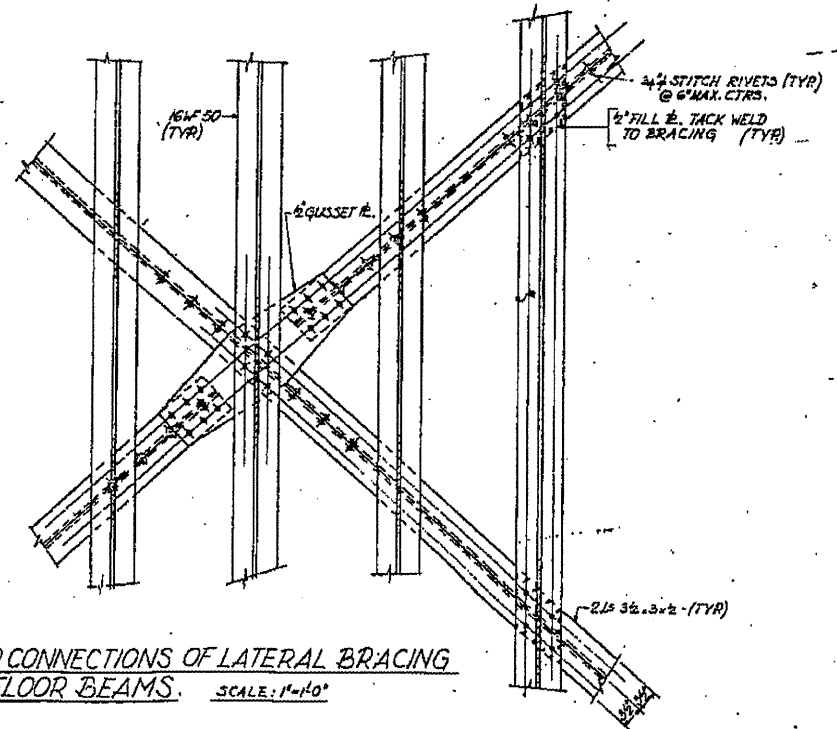
SECTION C-C  
SCALE: 1"=10'

ELEVATION A-A  
SCALE: 1"=10'

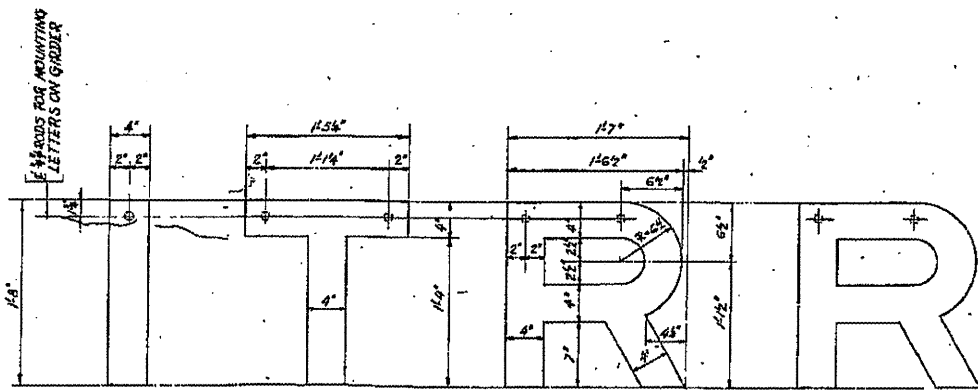
SECTION B-B  
SCALE: 1"=10'



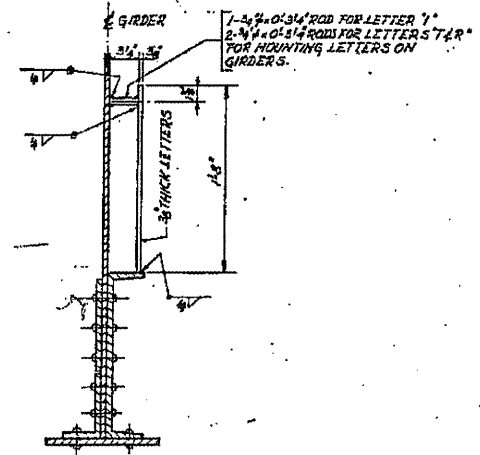
PLAN OF END FLOOR BEAM  
SCALE: 1"=10'



TYP CONNECTIONS OF LATERAL BRACING TO FLOOR BEAMS.  
SCALE: 1"=10'



DETAIL OF LETTERS  
ONE SET TO BE MOUNTED ON EACH GIRDER  
SCALE: 1/2"=10'



SECTION THRU LETTER AT GIRDERS  
SCALE: 1/2"=10'

NOTE:  
I.T.R.R. LETTERS TO BE CUT FROM 3/8" STRUCTURAL STEEL PLATES. LETTERS MAY BE FLAME CUT, BUT EDGES MUST BE GRIND TRUE, SMOOTH AND EVEN. LETTERS SHALL BE GIVEN ONE SHOP COAT OF PAINT, SAME AS STRUCTURAL STEEL AND TWO FIELD COATS OF BLACK AUTO ENAMEL. LETTERS AND RODS FOR MOUNTING ENBLEM ON GIRDERS SHALL BE INCLUDED IN THE CONTRACT UNIT PRICE FOR RAILROAD ENBLEMS.  
FOR LOCATION OF LETTERS SEE SECT. A-1, SHT. 3

ALFRED BENECH & ASSOCIATES  
CONSULTING ENGINEERS  
10 E. WASHINGTON AVE. CHICAGO, ILLINOIS

END FLOOR BEAM  
UNDERPASS  
I.T.R.R. BRIDGE No. F-71.5  
OVER SOUTH 5<sup>TH</sup> STREET EXTENDED SPRINGFIELD, ILLINOIS  
PROJECT UG 166(40)  
SECTION 110X-75B  
SANGAMON COUNTY  
STATION 6+22.70

FILE NAME = #FILE#	USER NAME = #USER#	DESIGNED -	REVISED -
		DRAWN -	REVISED -
		CHECKED -	REVISED -
		DATE -	REVISED -

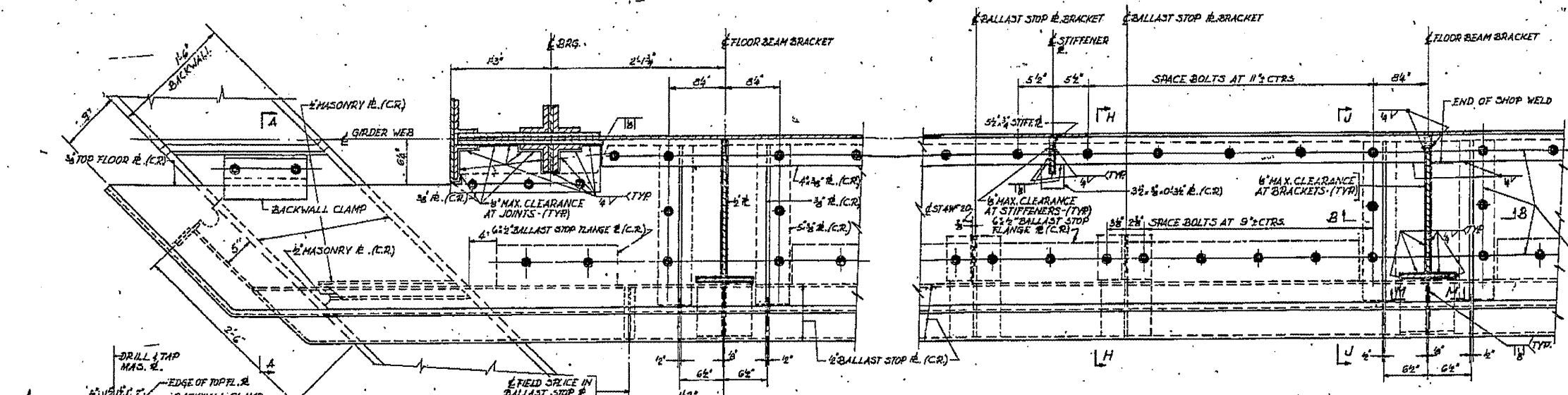
STATE OF ILLINOIS  
DEPARTMENT OF TRANSPORTATION

084-0033 (FOR INFORMATION ONLY)

SCALE: SHEET NO. OF SHEETS STA. TO STA.

F.A.P. RTE.	SECTION	COUNTY	TOTAL SHEETS	SHEET NO.
666	D-5 PAINTING 2000P	SANGAMON	13	11
FED. ROAD DIST. NO. 6 ILLINOIS FED. AID PROJECT			2012	CONTRACT NO. 72C48

ROUTE NO.	SECTION	COUNTY	TOTAL SHEETS	SHEET NO.
EA. 5	10X-75B	SANGAMON	25	11
STA.	TO STA.		PROJECT	
A. P. E. NO. 1	ILLINOIS	PROJECT		
SHEET 7 OF 19				

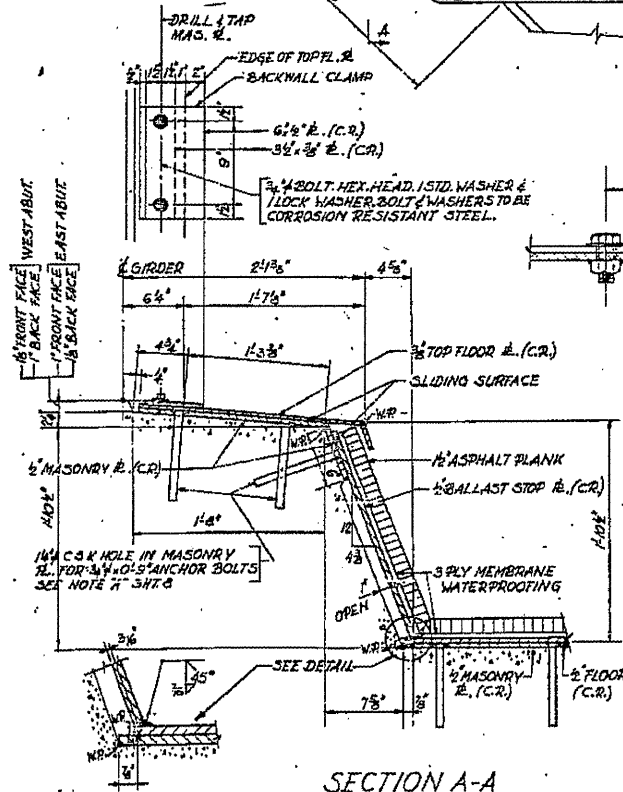


ALL BOLTS FOR CONNECTING TOP FLOOR PLATE TO BE 3/4\"/>

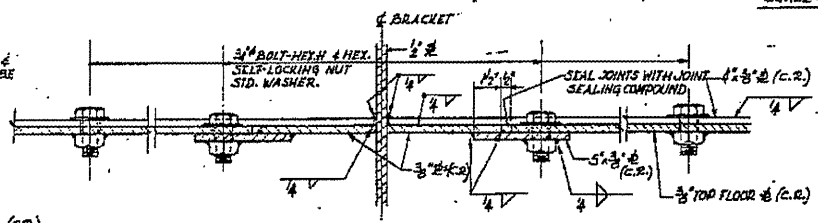
PARTIAL PLAN OF TOP FLOOR PLATE  
SCALE: 1/4\"/>

NOTES:  
FOR SECTIONS H-H, U-U, M-M  
SEE SHEET 5.

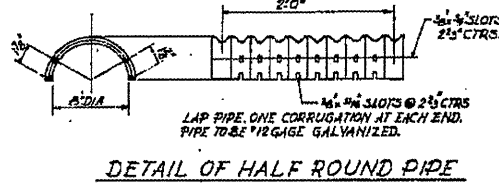
NOTE:  
JOINTS IN TOP FLOOR PLATE SHALL BE SEALED WITH A GUN GRADE, GREY, TWO COMPONENT NON-STAINING SEALING COMPOUND WITH POLYSULFIDE LIQUID POLYMER AFTER THE STRUCTURE HAS BEEN FIELD PAINTED.  
THE COST OF FURNISHING AND APPLYING THE SEALING COMPOUND SHALL NOT BE PAID FOR SEPARATELY, BUT SHALL BE CONSIDERED INCIDENTAL TO THE CONTRACT.



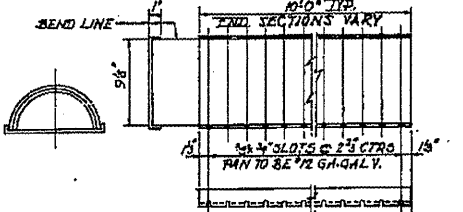
SECTION A-A  
SCALE: 1/2\"/>



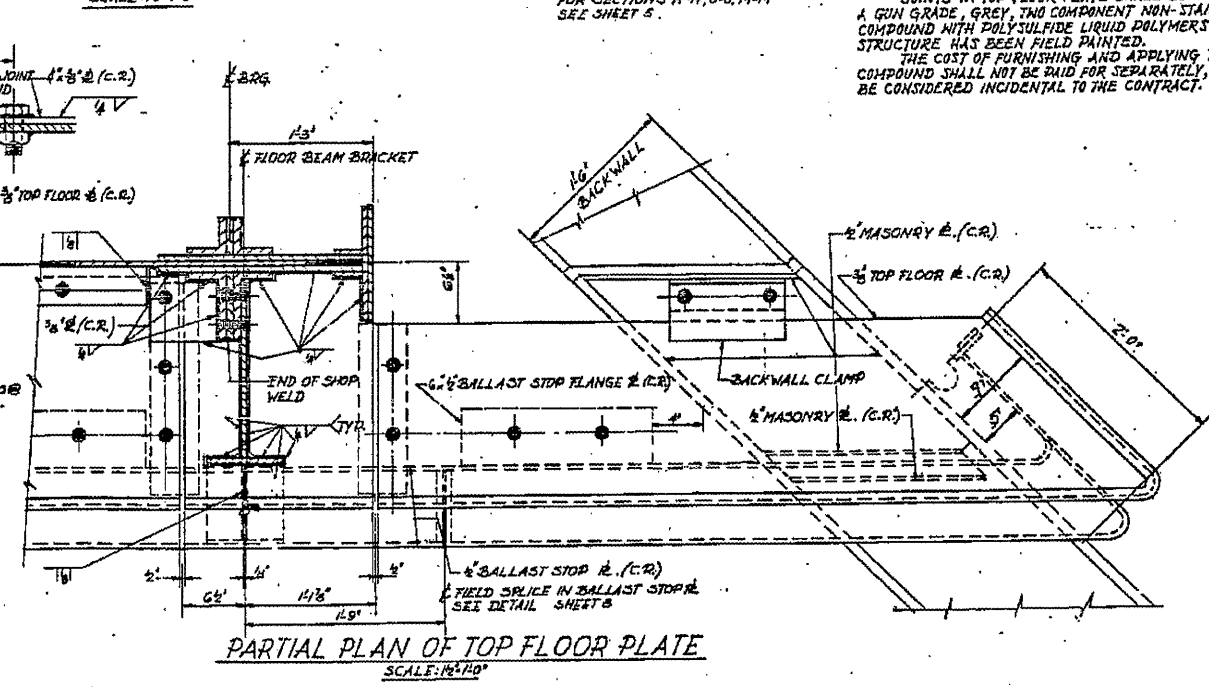
SECTION B-B  
SCALE: 3/4\"/>



DETAIL OF HALF ROUND PIPE



DETAIL OF BOTTOM PAN  
DETAILS OF DECK DRAIN



PARTIAL PLAN OF TOP FLOOR PLATE  
SCALE: 1/4\"/>

UPPER FLOOR PLATE DETAILS  
UNDERPASS

I.I.R.R. BRIDGE No. F-715  
OVER SOUTH 5<sup>TH</sup> STREET EXTENDED SPRINGFIELD, ILLINOIS  
PROJECT UG 166 (40)  
EA. ROUTE 5 SECTION 10X-75B

SANGAMON COUNTY  
STATION 6+22.70

ALFRED BEMISH & ASSOCIATES  
CONSULTING ENGINEERS  
10 S. WILSON AVE. CHICAGO, ILLINOIS

FILE NAME #	USER NAME #	DESIGNED -	REVISED -
#FILE#	#USER#	DRAWN -	REVISED -
		CHECKED -	REVISED -
		DATE -	REVISED -

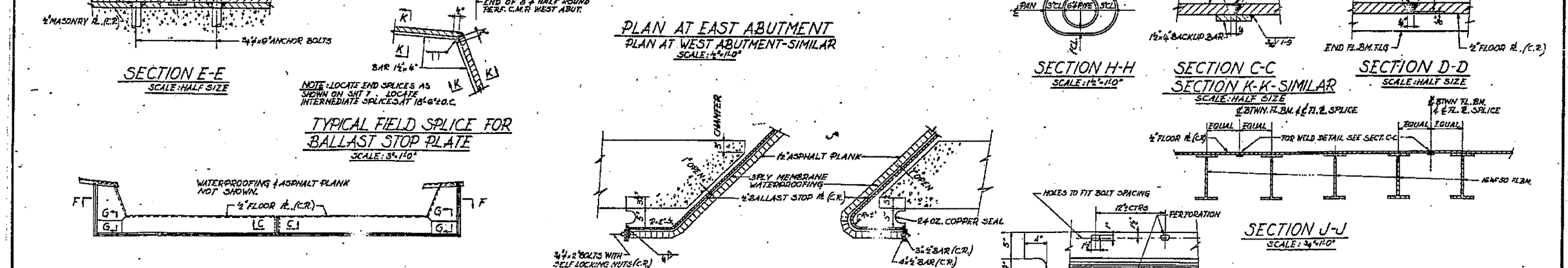
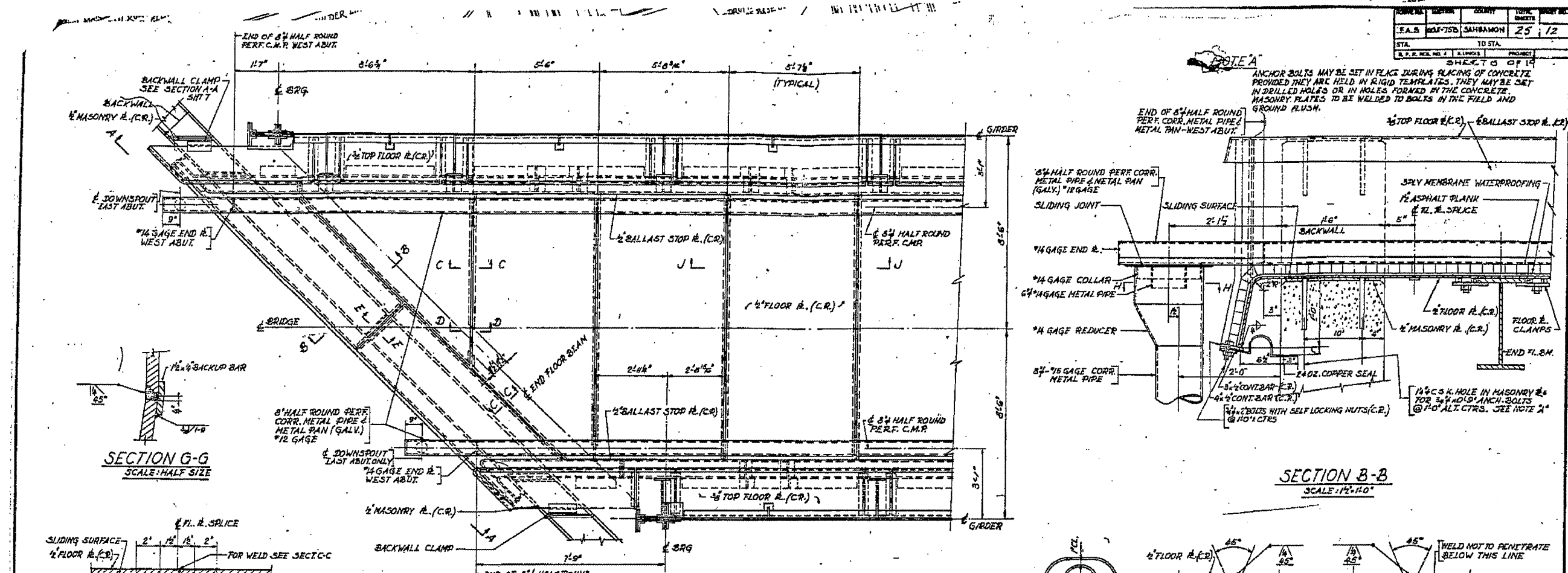
STATE OF ILLINOIS  
DEPARTMENT OF TRANSPORTATION

084-0033 (FOR INFORMATION ONLY)

SCALE: SHEET NO. OF SHEETS STA. TO STA.

F.A.P. RTE.	SECTION	COUNTY	TOTAL SHEETS	SHEET NO.
666	D-6 PAINTING 2088*	SANGAMON	13	12
2012			CONTRACT NO. 72C48	
FED. ROAD DIST. NO. 6 ILLINOIS FED. AID PROJECT				

SECTION	COUNTY	TOTAL SHEETS	SHEET NO.
F.A.S. 1001-75B	SANGAMON	25	12
STA.	TO STA.	PROJECT	
		SHEET 12 OF 14	
F.P.E. NO. 1	ALPHAS	PROJECT	



**SECTION G-G**  
SCALE: HALF SIZE

**SECTION B-B**  
SCALE: 1/4"=1'-0"

**PLAN AT EAST ABUTMENT**  
PLAN AT WEST ABUTMENT-SIMILAR  
SCALE: 1/4"=1'-0"

**SECTION E-E**  
SCALE: HALF SIZE

**SECTION H-H**  
SCALE: 1/2"=1'-0"

**SECTION C-C**  
SECTION K-K-SIMILAR  
SCALE: HALF SIZE

**SECTION D-D**  
SCALE: HALF SIZE

**SECTION A-A**  
SCALE: 3/4"=1'-0"

**SECTION F-F**  
SCALE: 1/2"=1'-0"

**SECTION J-J**  
SCALE: 3/4"=1'-0"

**TYPICAL FIELD SPLICE FOR BALLAST STOP PLATE**  
SCALE: 3/4"=1'-0"

**DETAIL OF 24 OZ. COPPER SEAL**  
SCALE: 1/2"=1'-0"

**FLOOR PLATE DETAILS UNDERPASS**

I.T.R.R. BRIDGE No. F-71.5  
OVER SOUTH 5<sup>TH</sup> STREET EXTENDED SPRINGFIELD, ILLINOIS  
PROJECT UG 166 (40)  
F.A. ROUTE 5 SECTION 100X-75.5  
SANGAMON COUNTY  
STATION B+22.70

**NOTE:**  
COPPER SEAL SHALL BE PERFORATED AND BE 24 OZ. COLD ROLLED ANNEALED COPPER. COPPER SEAL SHALL BE CONTINUOUS ALONG EACH SIDE OF JOINT. SPLICES SHALL BE SOLDERED OR BRAZED.

ALPHAS ENGINEERING & ASSOCIATES  
CONSULTING ENGINEERS  
111 N. KARLOV AVE. CHICAGO, ILLINOIS

FILE NAME =	USER NAME = *USER*	DESIGNED -	REVISED -
*FILE.L*		DRAWN -	REVISED -
		CHECKED -	REVISED -
		DATE -	REVISED -

STATE OF ILLINOIS  
DEPARTMENT OF TRANSPORTATION

084-0033 (FOR INFORMATION ONLY)

SCALE: SHEET NO. OF SHEETS STA. TO STA.

F.A.P. B.T.E.	SECTION	COUNTY	TOTAL SHEETS	SHEET NO.
666	D-6 PAINTING 2006	SANGAMON	13	13
2012		CONTRACT NO. 72048		
FED. ROAD DIST. NO. 6 (ILLINOIS) FED. AID PROJECT				