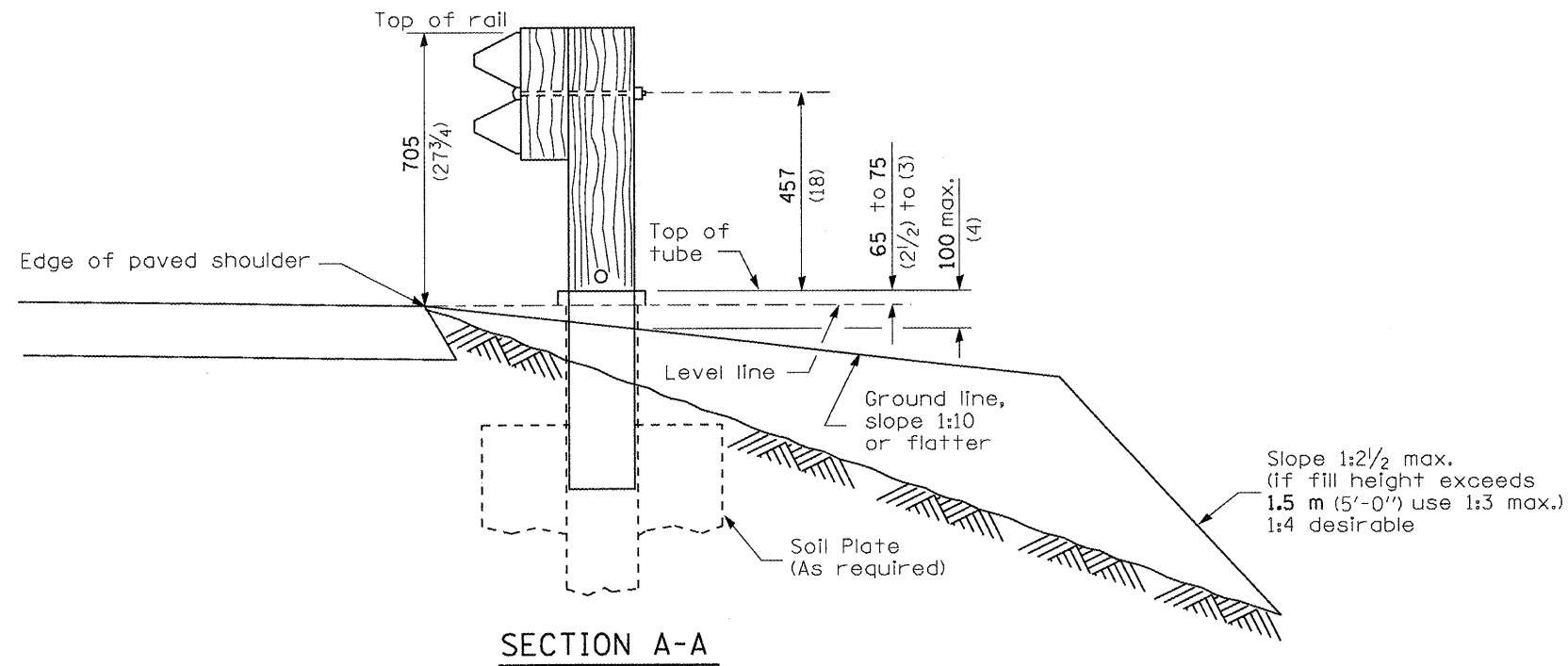


**SHOULDER WIDENING TRANSITION
FOR TANGENT TERMINAL**



SECTION A-A

GENERAL NOTES

50:1 Taper required so the guardrail head will not encroach on the shoulder.

All slope ratios are expressed as units of vertical displacement to units of horizontal displacement (V:H).

All dimensions are in millimeters (inches) unless otherwise shown.

FILE NAME =	USER NAME = Sparksq*	DESIGNED -	REVISED -	STATE OF ILLINOIS DEPARTMENT OF TRANSPORTATION	PRE-MGS HIGHWAY STANDARD 630301-03 SHOULDER WID. FOR TYPE 1 (SPL) GUARDRAIL TERMINAL EFFECTIVE 4-1-06				F.A. RTE. VAR	SECTION	COUNTY	TOTAL SHEETS	SHEET NO.
ct:\pvc\work\pvidot\sparksq\08262291\0672E39-sht-287-630301-03_ShldWidenForType1Grdr	DRAWN=ign	CHECKED -	REVISED -		SCALE:	SHEET NO.	OF	SHEETS	STA.	TO STA.	ILLINOIS FED. AID PROJECT	18	11
PLDT SCALE = 0:26.000 ms / in.	DATE -	DATE -	DATE -								CONTRACT NO. 72E39		
PLDT DATE = Apr-01-2011 09:43:58AM													

* 06 CABLE/GUARDRAIL REPAIR 2011