

HORIZONTAL CURVE DATA
 CL FAI 72 EXIST. CURVE C1
 PI STA. = 222+56.58
 $\Delta = 42^\circ 41' 52''$ (RT)
 $D = 2^\circ 00' 00''$
 $R = 2,864.79'$
 $T = 1,119.75'$
 $L = 2,134.89'$
 $E = 211.06'$
 P.C. STA. = 211+36.83
 P.T. STA. = 232+71.72

HORIZONTAL CURVE DATA
 CL ROADWAY "A" CURVE C2
 PI STA. = 101+96.04
 $\Delta = 12^\circ 11' 45''$ (LT)
 $D = 3^\circ 7' 20.59''$
 $R = 1,835.00'$
 $T = 196.04'$
 $L = 390.59'$
 $E = 10.44'$
 P.C. STA. = 100+00.00
 P.T. STA. = 103+90.59

HORIZONTAL CURVE DATA
 CL ROADWAY "A" CURVE C3
 PI STA. = 106+68.55
 $\Delta = 12^\circ 9' 20''$ (RT)
 $D = 3^\circ 7' 20.59''$
 $R = 1,835.00'$
 $T = 195.39'$
 $L = 389.31'$
 $E = 10.58'$
 P.C. STA. = 104+73.16
 P.T. STA. = 108+62.47

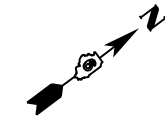
HORIZONTAL CURVE DATA
 CL ROADWAY "B" CURVE C4
 PI STA. = 201+92.84
 $\Delta = 11^\circ 59' 54''$ (RT)
 $D = 3^\circ 7' 20.59''$
 $R = 1,835.00'$
 $T = 192.84'$
 $L = 384.26'$
 $E = 10.10'$
 P.C. STA. = 200+00.00
 P.T. STA. = 203+84.26

HORIZONTAL CURVE DATA
 CL ROADWAY "B" CURVE C5
 PI STA. = 206+67.27
 $\Delta = 12^\circ 14' 10''$ (LT)
 $D = 3^\circ 7' 20.59''$
 $R = 1,835.00'$
 $T = 196.69'$
 $L = 391.88'$
 $E = 10.36'$
 P.C. STA. = 204+70.58
 P.T. STA. = 208+62.46

BENCHMARKS

SITE BENCHMARK - BM1
 CHISLED SQUARE IN TOP
 OF HEADWALL, SOUTHWESTERLY
 CORNER OF BRIDGE NO. 084-0152
 WESTBOUND LANE I-72
 ELEV. 548.408 (NAVD88)

SITE BENCHMARK - BM2
 CHISLED SQUARE IN TOP
 OF HEADWALL, SOUTHEASTERLY
 CORNER OF BRIDGE NO. 084-0152
 WESTBOUND LANE I-72
 ELEV. 548.272 (NAVD88)

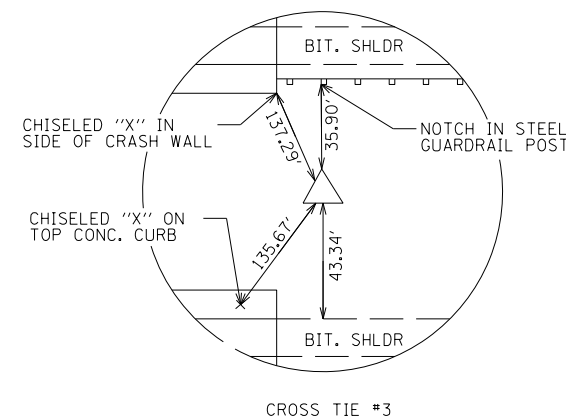
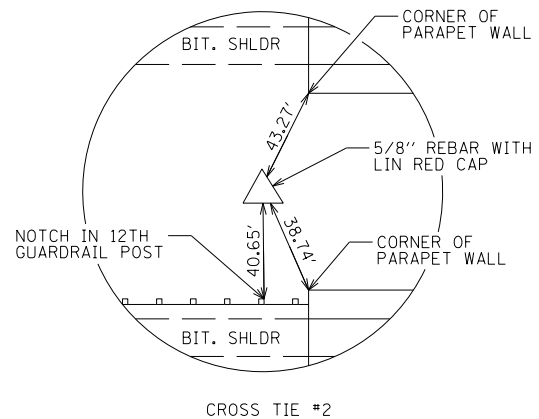
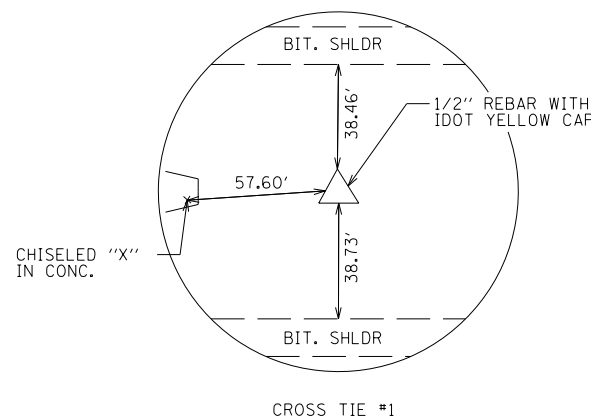
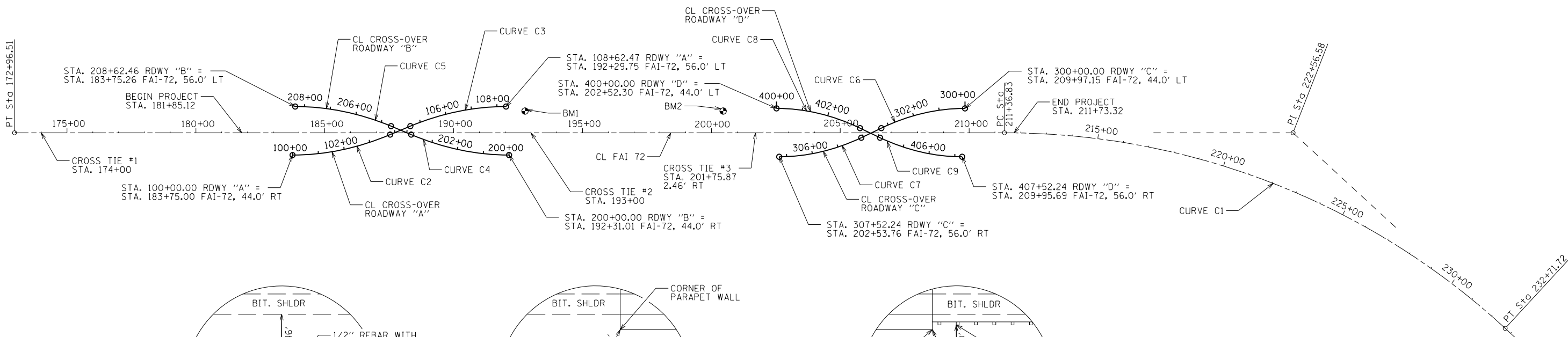


HORIZONTAL CURVE DATA
 CL ROADWAY "C" CURVE C6
 PI STA. = 301+68.52
 $\Delta = 13^\circ 49' 30''$ (LT)
 $D = 4^\circ 7' 19.19''$
 $R = 1,390.00'$
 $T = 168.52'$
 $L = 335.40'$
 $E = 10.18'$
 P.C. STA. = 300+00.00
 P.T. STA. = 303+35.40

HORIZONTAL CURVE DATA
 CL ROADWAY "C" CURVE C7
 PI STA. = 305+86.07
 $\Delta = 13^\circ 45' 55''$ (RT)
 $D = 4^\circ 7' 19.19''$
 $R = 1,390.00'$
 $T = 167.78'$
 $L = 333.95'$
 $E = 10.26'$
 P.C. STA. = 304+18.29
 P.T. STA. = 307+52.24

HORIZONTAL CURVE DATA
 CL ROADWAY "D" CURVE C8
 PI STA. = 401+68.52
 $\Delta = 13^\circ 49' 30''$ (RT)
 $D = 4^\circ 7' 19.19''$
 $R = 1,390.00'$
 $T = 168.52'$
 $L = 335.40'$
 $E = 10.18'$
 P.C. STA. = 400+00.00
 P.T. STA. = 403+35.40

HORIZONTAL CURVE DATA
 CL ROADWAY "D" CURVE C9
 PI STA. = 405+86.07
 $\Delta = 13^\circ 45' 55''$ (LT)
 $D = 4^\circ 7' 19.19''$
 $R = 1,390.00'$
 $T = 167.78'$
 $L = 333.95'$
 $E = 10.26'$
 P.C. STA. = 404+18.29
 P.T. STA. = 407+52.24



USER NAME = sparksgw	DESIGNED -	REVISED -
	DRAWN - BDM	REVISED -
PLOT SCALE = 48.0000' / in.	CHECKED - JSA	REVISED -
PLOT DATE = Jun-08-2011 09:43:33AM	DATE - 7/15/09	REVISED -

STATE OF ILLINOIS
 DEPARTMENT OF TRANSPORTATION

I-72 SANGAMON RIVER BRIDGES
 ALIGNMENT TIES AND BENCHMARKS

SCALE: SHEET NO. OF SHEETS STA. TO STA.

F.A.I. RTE.	SECTION	COUNTY	TOTAL SHEETS	SHEET NO.
I-72	(84-10-1)I-7	SANGAMON	41	9
CONTRACT NO. 72E51				
ILLINOIS FED. AID PROJECT				