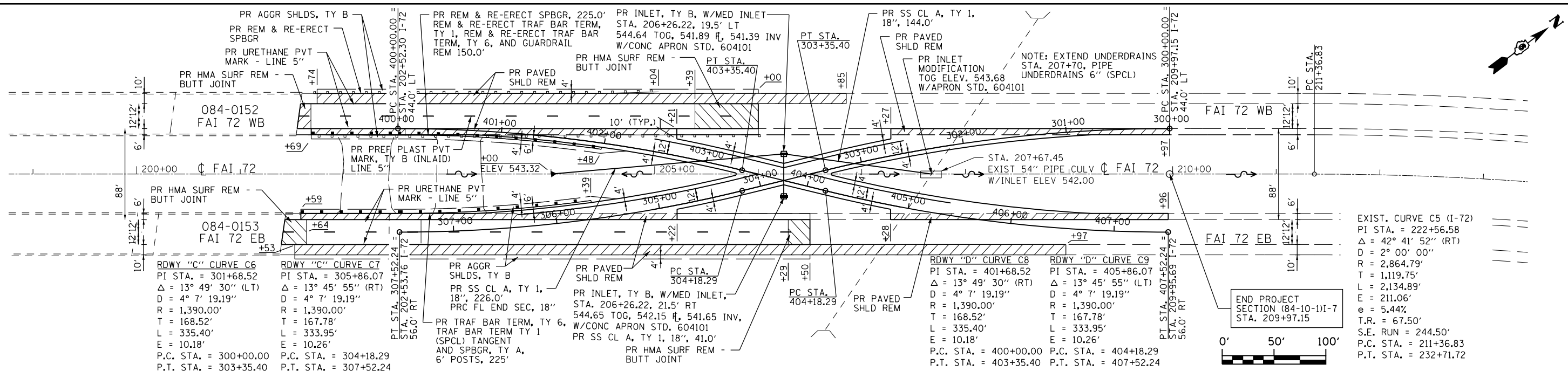
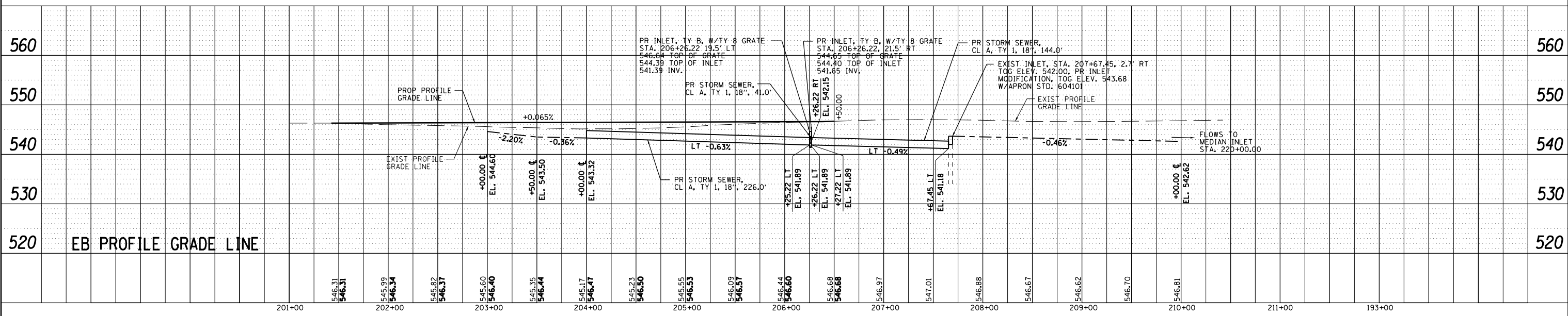
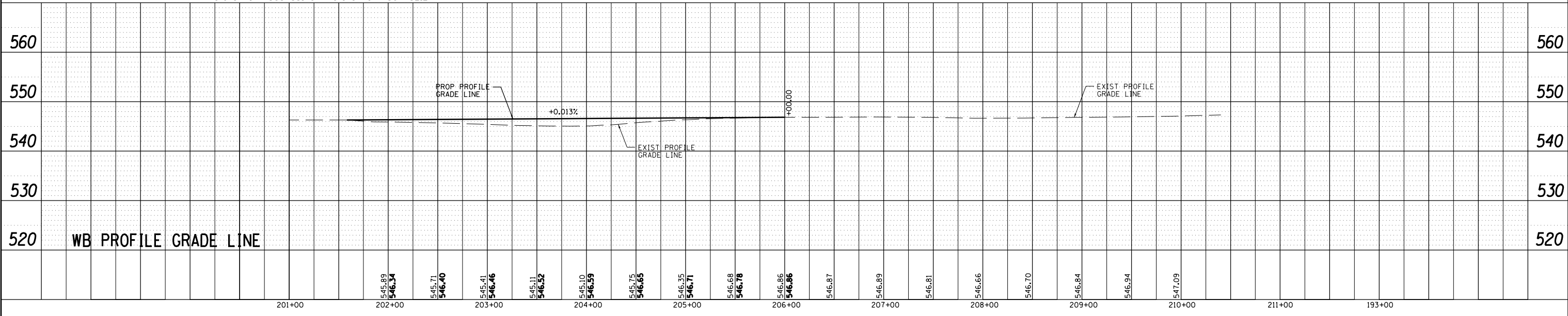


PLAN	SURVEYED	DATE
	PLOTTED	BY
	ALIGNED	
	CHECKED	
	FILED	
	NO.	
	NO.	
	NO.	

PROFILE	SURVEYED	DATE
	PLOTTED	BY
	GRADES	
	CHECKED	
	STRUCTURE	
	NOTATIONS	
	CHKD	
	NO.	
	NO.	



EXIST. CURVE C5 (I-72)
 PI STA. = 222+56.58
 Δ = 42° 41' 52" (RT)
 D = 2° 00' 00"
 R = 2,864.79'
 T = 1,119.75'
 L = 2,134.89'
 E = 211.06'
 e = 5.44%
 T.R. = 67.50'
 S.E. RUN = 244.50'
 P.C. STA. = 211+36.83
 P.T. STA. = 232+71.72



USER NAME = sparksgw	DESIGNED -	REVISED -
	DRAWN - BDM	REVISED -
PLOT SCALE = 100.0000' / in.	CHECKED - JSA	REVISED -
PLOT DATE = Jun-08-2011 09:43:42AM	DATE - 7/15/09	REVISED -

**STATE OF ILLINOIS
DEPARTMENT OF TRANSPORTATION**

PLAN AND PROFILE SHEET - EAST STORM SEWER

SCALE: SHEET NO. OF SHEETS STA. TO STA.

F.A.I. RTE.	SECTION	COUNTY	TOTAL SHEETS	SHEET NO.
I-72	(84-10-1)-7	SANGAMON	41	11
CONTRACT NO. 72E51				
ILLINOIS FED. AID PROJECT				