

STATE OF ILLINOIS
 DEPARTMENT OF TRANSPORTATION
 DIVISION OF HIGHWAYS

**PROPOSED
 CONTRACT MAINTENANCE**

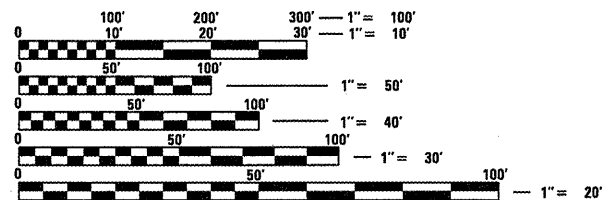
FAI 55 (I 55)
 SECTION (54) INT PATCHING 2012

LOGAN COUNTY

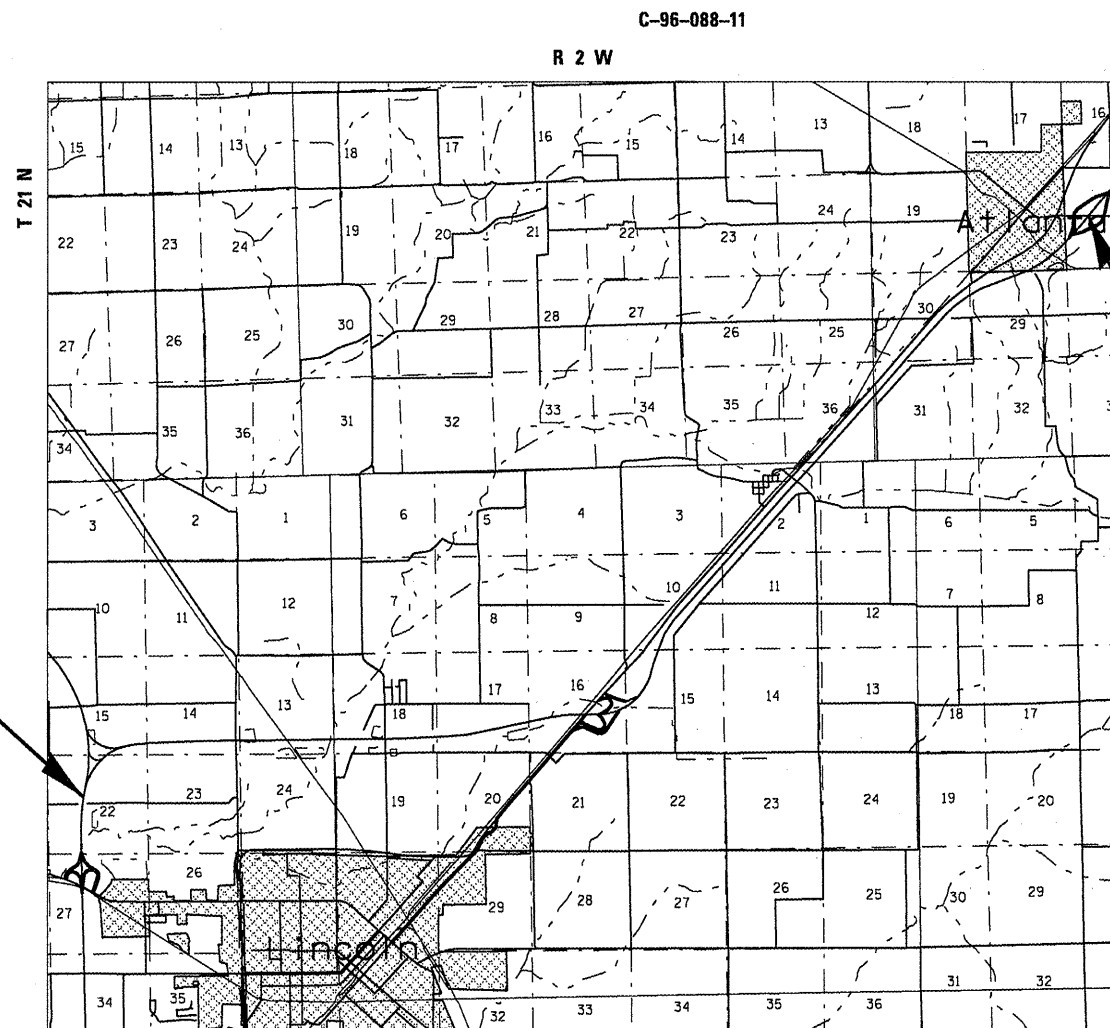
F.A.I. RTE.	SECTION	COUNTY	TOTAL SHEETS	SHEET NO.
55	(54) INT PATCHING 2012	LOGAN	6	1
FED. ROAD DIST. NO.	ILLINOIS	CONTRACT NO. 72E56		

FOR INDEX OF SHEETS, SEE SHEET NO. 2

A.D.T. = 18,200 (5,400)



FULL SIZE PLANS HAVE BEEN PREPARED USING STANDARD ENGINEERING SCALES. REDUCED SIZED PLANS WILL NOT CONFORM TO STANDARD SCALES. IN MAKING MEASUREMENTS ON REDUCED PLANS, THE ABOVE SCALES MAY BE USED.



END PROJECT
 STA. 227 + 000.00

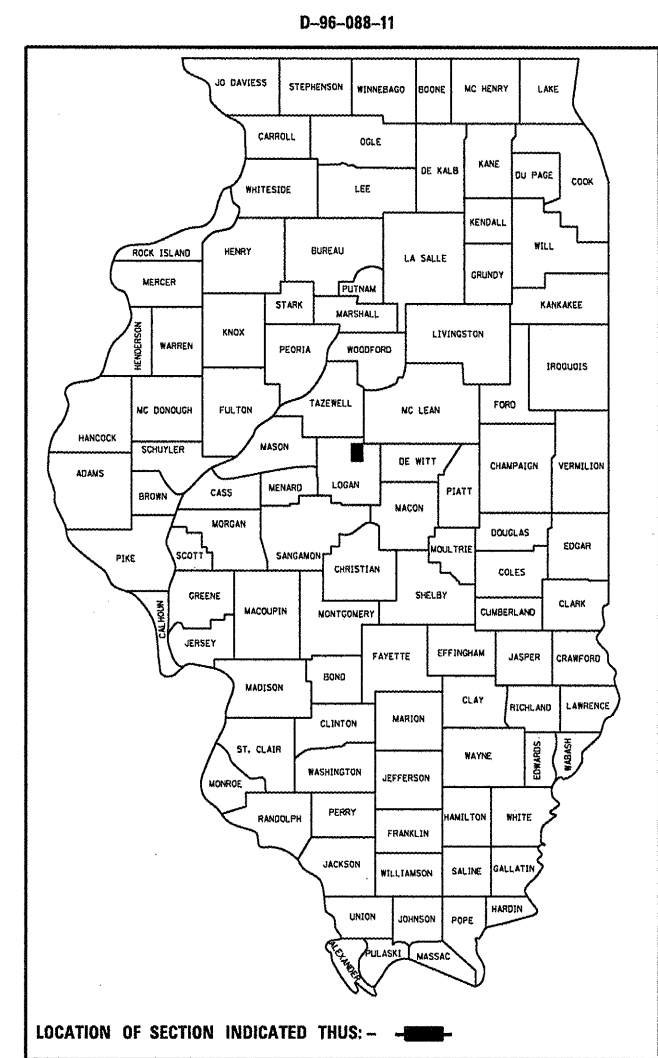
BEGIN PROJECT
 STA. 203 + 270.00

J.U.L.I.E.
 JOINT UTILITY LOCATION INFORMATION FOR EXCAVATION
 1-800-892-0123
 OR 811

PLAN AND CONTRACT TECHNICIAN
 TIMOTHY SHARP (217)782-7743

CONTRACT NO. 72E56

GROSS LENGTH = 82,348.00 FT. = 15.600 MILES



LOCATION OF SECTION INDICATED THUS: -

STATE OF ILLINOIS
 DEPARTMENT OF TRANSPORTATION
 DIVISION OF HIGHWAYS

SUBMITTED May 31 20 11
Reynold Daskin
 DEPUTY DIRECTOR OF HIGHWAYS, REGION ENGINEER

July 1 20 11
Scott E. Stitt P.E.
 ACTING ENGINEER OF DESIGN AND ENVIRONMENT

July 1 20 11
Christine M. Reader
 DIRECTOR OF HIGHWAYS, CHIEF ENGINEER

PRINTED BY THE AUTHORITY
 OF THE STATE OF ILLINOIS