

F.A.P. RTE.	SECTION	COUNTY	TOTAL SHEETS	SHEET NO.
322	(51,52)L-2	MACON	11	1
FED. ROAD DIST. NO. 7	ILLINOIS	CONTRACT NO. 74344		

**STATE OF ILLINOIS**  
**DEPARTMENT OF TRANSPORTATION**  
**DIVISION OF HIGHWAYS**

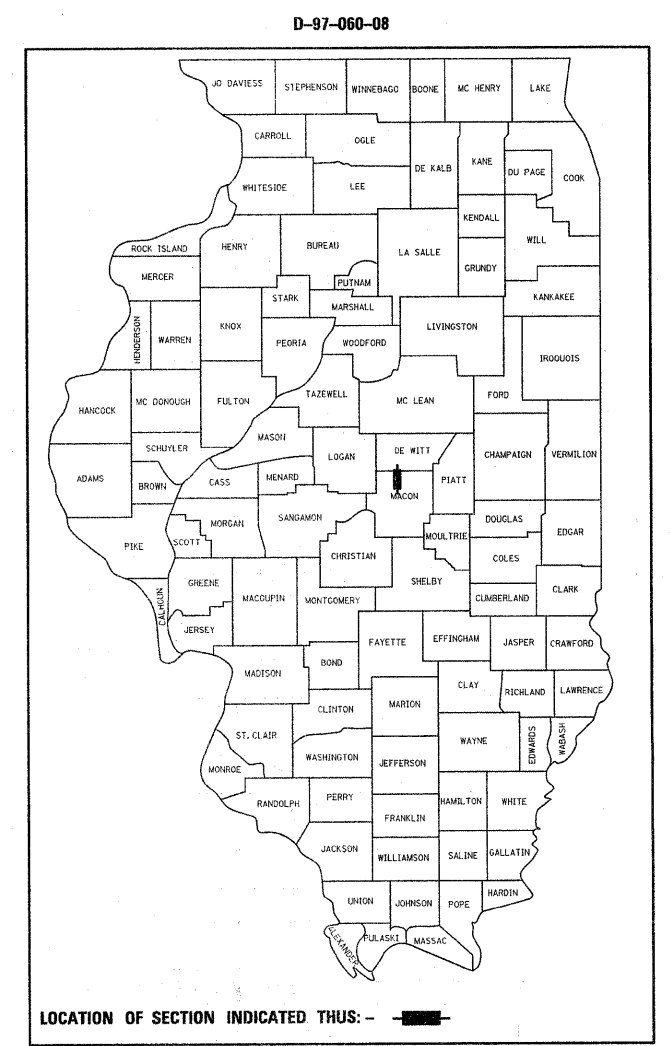
**PROPOSED**  
**HIGHWAY PLANS**

**FAP ROUTE 322 (U.S. 51)**  
**SECTION (51,52)L-2**

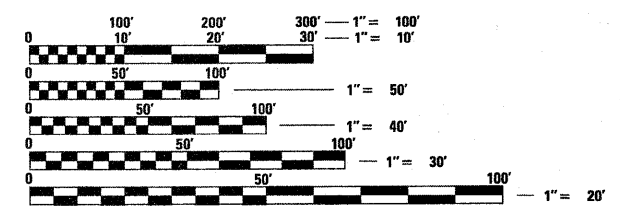
**HIGHWAY LIGHTING**  
**MACON COUNTY**

C-97-113-08

FOR INDEX OF SHEETS, SEE SHEET NO. 2

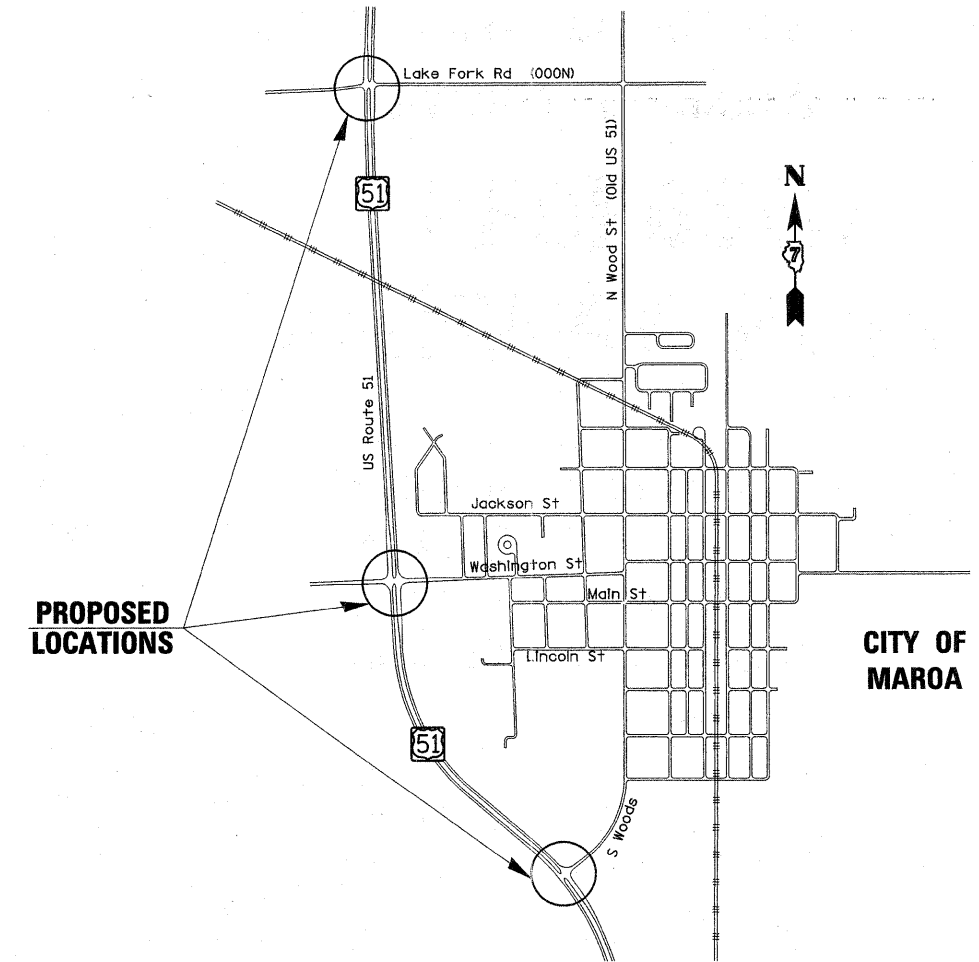


ADT US RTE 51-12400 (2009)



FULL SIZE PLANS HAVE BEEN PREPARED USING STANDARD ENGINEERING SCALES. REDUCED SIZED PLANS WILL NOT CONFORM TO STANDARD SCALES. IN MAKING MEASUREMENTS ON REDUCED PLANS, THE ABOVE SCALES MAY BE USED.

J.U.L.I.E.  
 JOINT UTILITY LOCATION INFORMATION FOR EXCAVATION  
 1-800-892-0123  
 OR 811



GROSS LENGTH = x.xx FT. = x.xxx MILE  
 NET LENGTH = x.xx FT. = x.xxx MILE

PROJECT ENGINEER-ROB MACKLIN  
 PROJECT MANAGER-LYNN McCLELLAN

CONTRACT NO. 74344

STATE OF ILLINOIS  
 DEPARTMENT OF TRANSPORTATION  
 DIVISION OF HIGHWAYS

SUBMITTED 05-26 20 11

Roger L. Drishell, Inc.  
 DEPUTY DIRECTOR OF HIGHWAYS, REGION ENGINEER

July 1 20 11  
Scott E. Stitt, P.E., Inc.  
 ACTING ENGINEER OF DESIGN AND ENVIRONMENT

July 1 20 11  
Christine M. Reed, Inc.  
 DIRECTOR OF HIGHWAYS, CHIEF ENGINEER

**PRINTED BY THE AUTHORITY**  
**OF THE STATE OF ILLINOIS**