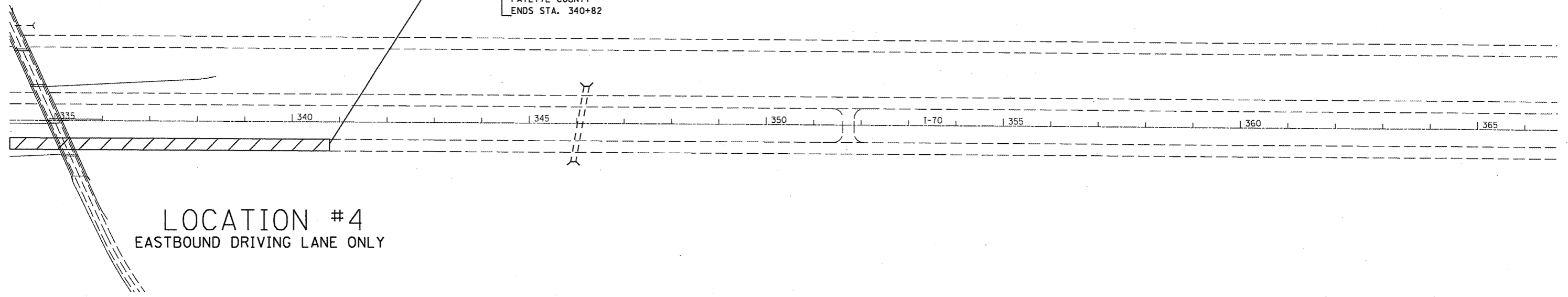


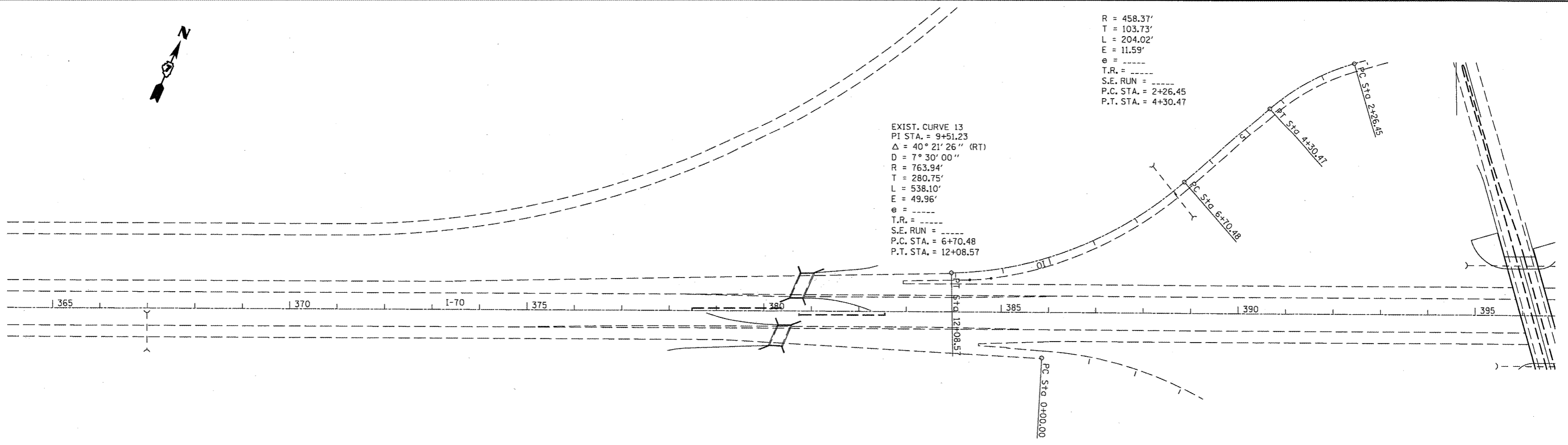


FAI ROUTE 70  
SECTION D7 HMA RESURF 2012-1  
FAYETTE COUNTY  
ENDS STA. 340+82



LOCATION #4  
EASTBOUND DRIVING LANE ONLY

NOT DRAWN TO SCALE



EXIST. CURVE 13  
PI STA. = 9+51.23  
 $\Delta = 40^\circ 21' 26''$  (RT)  
D = 7° 30' 00"  
R = 763.94'  
T = 280.75'  
L = 538.10'  
E = 49.96'  
e = -----  
T.R. = -----  
S.E. RUN = -----  
P.C. STA. = 6+70.48  
P.T. STA. = 12+08.57

R = 458.37'  
T = 103.73'  
L = 204.02'  
E = 11.59'  
e = -----  
T.R. = -----  
S.E. RUN = -----  
P.C. STA. = 2+26.45  
P.T. STA. = 4+30.47

NOT DRAWN TO SCALE

FILE NAME =	USER NAME = swartzrw	DESIGNED -	REVISED -	<b>STATE OF ILLINOIS DEPARTMENT OF TRANSPORTATION</b>	<b>PLAN</b>			F.A.I. RTE.	SECTION	COUNTY	TOTAL SHEETS	SHEET NO.
ct:\pw_work\p\p\dot\swartzrw\d0268526\077	522-sht-plan.dgn	DRAWN -	REVISED -		TO	D7 HMA RESURF 2012-1	FAYETTE	12	12			
	PLOT SCALE = 200.0000' / 1in.	CHECKED -	REVISED -		SCALE: NA	SHEET NO. 7 OF 7 SHEETS	STA. 335+00 TO STA. 396+00	<b>CONTRACT NO. 74522</b>				
	PLOT DATE = 5/20/2011	DATE -	REVISED -		ILLINOIS FED. AID PROJECT							