

STATE OF ILLINOIS  
DEPARTMENT OF TRANSPORTATION  
DIVISION OF HIGHWAYS

**PROPOSED  
HIGHWAY PLANS**

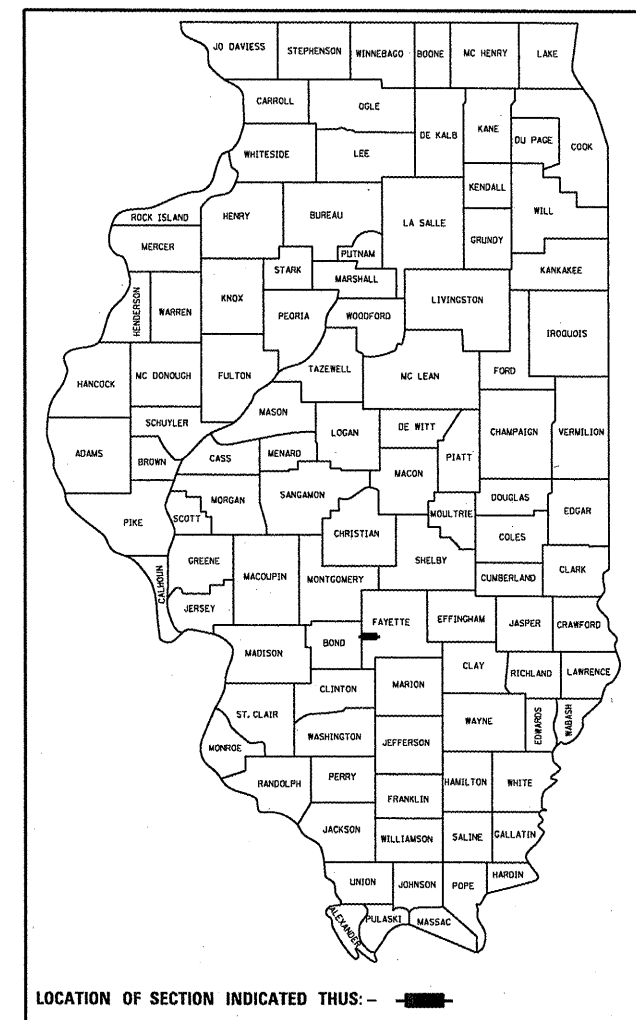
F.A.I. ROUTE 70 (I-70)  
SECTION D7 HMA RESURF 2012-1  
PROJECT IM-070-1(185)057  
RESURFACING INTERMITTENT  
FAYETTE COUNTY  
C-97-067-11

FOR INDEX OF SHEETS, SEE SHEET NO. 2

ADT = 20,300 (2010)

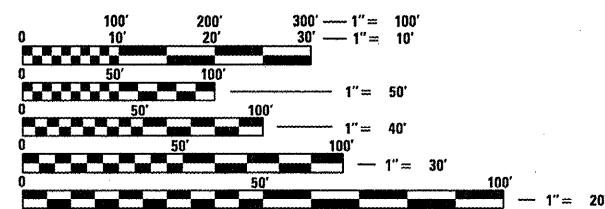
F.A.I. RTE.	SECTION	COUNTY	TOTAL SHEETS	SHEET NO.
70	D7 HMA RESURF 2012-1	FAYETTE	14	1
		ILLINOIS	CONTRACT NO. 74522	

D-97-024-11



F.A.I. RTE. 70  
SECTION D7 HMA RESURF 2012-1  
FAYETTE COUNTY  
ENDS STA. 340 + 82

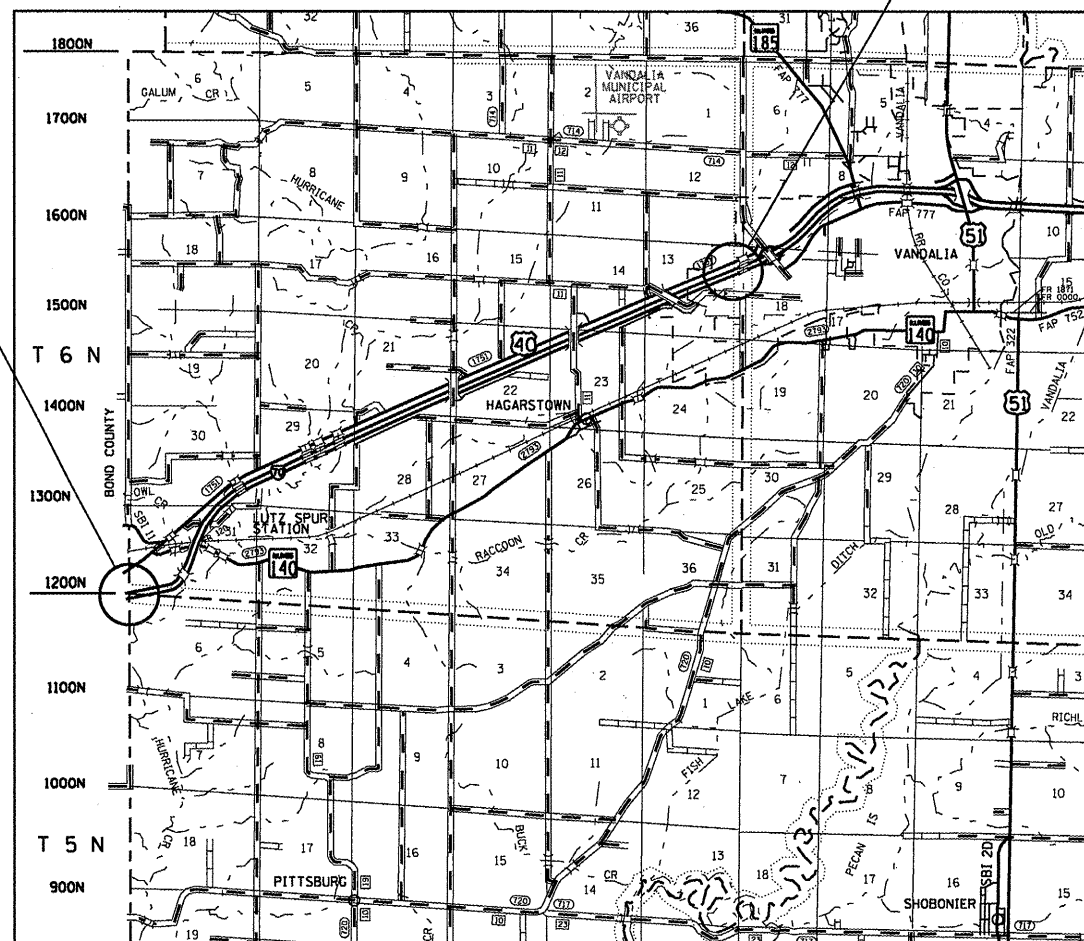
F.A.I. RTE. 70  
SECTION D7 HMA RESURF 2012-1  
FAYETTE COUNTY  
BEGINS STA. 3033 + 80



FULL SIZE PLANS HAVE BEEN PREPARED USING STANDARD ENGINEERING SCALES. REDUCED SIZED PLANS WILL NOT CONFORM TO STANDARD SCALES. IN MAKING MEASUREMENTS ON REDUCED PLANS, THE ABOVE SCALES MAY BE USED.

J.U.L.I.E.  
JOINT UTILITY LOCATION INFORMATION FOR EXCAVATION  
1-800-892-0123  
OR 811

PROJECT ENGINEER: TOM RONAN  
PROJECT MANAGER: BRETT WALKER  
PHONE: (217)-342-8320  
CONTRACT NO. 74522



GROSS LENGTH = 36,221 FT. = 6.86 MILES  
NET LENGTH = 7,545 FT. = 1.43 MILES

STATE OF ILLINOIS  
DEPARTMENT OF TRANSPORTATION  
DIVISION OF HIGHWAYS

SUBMITTED 05-24 20 11  
*Roger L. Drishell*  
DEPUTY DIRECTOR OF HIGHWAYS, REGION ENGINEER

July 1 20 11  
*Scott E. Stitt* P.E.  
acting ENGINEER OF DESIGN AND ENVIRONMENT

July 1 20 11  
*Christine M. Reed*  
DIRECTOR OF HIGHWAYS, CHIEF ENGINEER

**PRINTED BY THE AUTHORITY  
OF THE STATE OF ILLINOIS**

## INDEX OF SHEETS

SHEET NO.	ITEM
1	COVER SHEET
2	INDEX OF SHEETS & GENERAL NOTES
3	SUMMARY OF QUANTITIES
4-5	TYPICAL SECTIONS AND PAVING SCHEDULE
6-12	PLAN SHEETS
13-14	GUIDELINES FOR INTERSTATE PAVEMENT MARKING

THE FOLLOWING STANDARDS ARE A PART OF THESE PLANS AND ARE INCLUDED AFTER SHEET NO. 14:

STD. NO.	DESCRIPTION
000001-06	STANDARD SYMBOLS, ABBREVIATIONS, AND PATTERNS
701101-02	OFF-RD OPERATIONS, MULTILANE, 15' TO 24" FROM PAVEMENT EDGE
701400-05	APPROACH TO LANE CLOSURE, FREEWAY/EXPRESSWAY
701401-06	LANE CLOSURE FREEWAY/EXPRESSWAY
701426-04	LANE CLOSURE MULTILANE INTERMITTENT OR MOVING OPER. FOR SPEEDS >=45 MPH
701901-01	TRAFFIC CONTROL DEVICES
780001-02	TYPICAL PAVEMENT MARKINGS
781001-03	TYPICAL APPLICATIONS RAISED REFLECTIVE PAVEMENT MARKERS

## GENERAL NOTES

THIS SECTION SHALL BE CONSTRUCTED IN ACCORDANCE WITH THE PLANS, THE "STANDARD SPECIFICATIONS FOR ROAD AND BRIDGE CONSTRUCTION", ADOPTED JANUARY 1, 2007; THE "SUPPLEMENTAL SPECIFICATIONS AND RECURRING SPECIAL PROVISIONS" INDICATED ON THE CHECK SHEET, AND THE "SPECIAL PROVISIONS" INCLUDED IN THE PROPOSAL.

THIS PROJECT IS LOCATED ON EASTBOUND I-70 FROM THE BOND/FAYETTE COUNTY LINE TO C.H. 11. THE PROJECT IS LOCATED AT FOUR LOCATIONS WITHIN THIS 6.86 MILE STRETCH. THE WORK INCLUDED IN SECTION D7 HMA RESURF 2012-1 CONSISTS OF HOT-MIX ASPHALT SURFACE REMOVAL, HOT-MIX ASPHALT RESURFACING, PAVEMENT MARKING, AND ANY OTHER WORK NECESSARY TO COMPLETE THIS PROJECT.

PAVEMENT MARKING SHALL BE APPLIED IN ACCORDANCE WITH SECTION 780 OF THE STANDARD SPECIFICATIONS. SHORT TERM PAVEMENT MARKING SHALL BE APPLIED TO THE SHOULDER UNTIL PERMANENT PAVEMENT MARKING IS APPLIED FOR THE EDGE LINE.

PERMANENT PAVEMENT MARKING ON FAI 70 SHALL BE EPOXY PAVEMENT MARKING OR PREFORMED PLASTIC PAVEMENT MARKING OF THE SIZE AND TYPE SPECIFIED IN THE PAVEMENT MARKING SCHEDULE. THE QUANTITY OF PREFORMED PLASTIC PAVEMENT MARKING, TYPE B - LINE 6" WAS COMPUTED TO ALLOW FOR THE PLACEMENT OF A CENTERLINE FOR ALL FOUR INTERMITTENT LOCATIONS. ALL PREFORMED PLASTIC PAVEMENT MARKING TYPE B SHALL BE INSTALLED IN ACCORDANCE THE REQUIREMENTS OF PREFORMED PLASTIC PAVEMENT MARKING TYPE A AS SPECIFIED IN ARTICLE 780.07(d) OF THE "STANDARD SPECIFICATIONS FOR ROAD AND BRIDGE CONSTRUCTION.

THE TOTAL QUANTITY OF EPOXY PAVEMENT MARKING - LINE 4" CONSISTS OF 7545 FEET OF WHITE.

THE TOTAL QUANTITY OF PREFORMED PLASTIC PAVEMENT MARKING, TYPE B - LINE 6" CONSISTS OF 1910 FEET OF WHITE.

THE RAISED REFLECTIVE PAVEMENT MARKERS PLACED ON FAI 70 SHALL BE PLACED AS DOUBLE MARKERS AS SHOWN ON STANDARD 781001-02. THE TOTAL QUANTITY OF RAISED REFLECTIVE PAVEMENT MARKERS IS 196 ONE-WAY CRYSTAL.

THE CONTRACTOR SHALL USE EITHER RC-70, SS1H, OR SS-1HP, APPLIED AT THE RATE DIRECTED BY THE ENGINEER, FOR THE PAY ITEM BITUMINOUS MATERIALS (PRIME COAT).

THE CONTRACTOR SHALL PROVIDE INTERNET ACCESSIBILITY TO THE HOT-MIX ASPHALT PLANT QUALITY CONTROL LAB SO THAT HOT-MIX ASPHALT PLANT REPORTS CAN BE E-MAILED TO THE DISTRICT HEADQUARTERS. THIS WORK SHALL BE INCLUDED IN THE COST OF ALL HOT-MIX ASPHALT ITEMS.

THE SURFACE SHALL BE LAID AT LEAST 1/8" ABOVE THE SHOULDER EDGE SO THAT MAXIMUM DENSITY CAN BE OBTAINED.

A UNIFORMLY STRAIGHT SAW CUT SHALL BE MADE AT LOCATIONS WHERE PROPOSED NEW CONSTRUCTION WILL ABUT EXISTING BITUMINOUS CONCRETE SURFACES. THE SAW CUT SHALL BE MADE FULL DEPTH THROUGH THE EXISTING SURFACE. THIS WORK WILL BE CONSIDERED INCLUDED IN THE COST OF THE CONTRACT ITEMS INVOLVED AND NO EXTRA COMPENSATION WILL BE ALLOWED.

THE RESIDENT ENGINEER SHALL BE THE SOLE JUDGE CONCERNING THE CURING TIME FOR THE VARIOUS BITUMINOUS LIFTS.

PRIOR TO PLACEMENT OF BITUMINOUS MATERIALS (PRIME COAT), THE ENTIRE SURFACE AREA SHALL BE CLEANED AND DRIED WITH COMPRESSED AIR AS DIRECTED BY THE RESIDENT ENGINEER.

THE FOLLOWING MIXTURE REQUIREMENTS ARE APPLICABLE TO THIS PROJECT:

MIXTURE USE:	HMA BINDER COURSE (VAR.)	HMA SURFACE COURSE (1 1/2")
PG GRADE:	SBS PG 70-22	SBS PG 70-22
RAP%:	0%	0%
DESIGN AIR VOIDS:	4.0% @ NDESIGN = 105	4% @ NDESIGN = 105
MIXTURE COMPOSITION:	IL-19.0	IL-9.5
FRICTION AGGREGATE:	N/A	MIXTURE D

THE FOLLOWING APPLICATION RATES HAVE BEEN USED IN CALCULATING PLAN QUANTITIES:

HOT MIX ASPHALT	112 LBS/SQ YD/IN
BITUMINOUS MATERIALS (PRIME COAT)	0.10 GALLON/SQ YD
AGGREGATE PRIME COAT	4.00 LBS/SQ YD

FILE NAME =	USER NAME = swartzw	DESIGNED -	REVISED -	<b>STATE OF ILLINOIS DEPARTMENT OF TRANSPORTATION</b>	<b>INDEX OF SHEETS AND GENERAL NOTES</b>		F.A.I. RTE:	SECTION	COUNTY	TOTAL SHEETS	SHEET NO.	
c:\pw\work\p1dot\swartzw\0268526\077	522-shr-index.dgn	DRAWN -	REVISED -		70	D7 HMA RESURF 2012-1	FAYETTE	14	2			
PLOT SCALE = 100.0000' / in.	CHECKED -	REVISED -			SCALE: NA		SHEET NO. 1 OF 1 SHEETS		STA. TO STA.		CONTRACT NO. 74522	
PLOT DATE = 5/20/2011	DATE -	REVISED -			ILLINOIS FED. AID PROJECT							

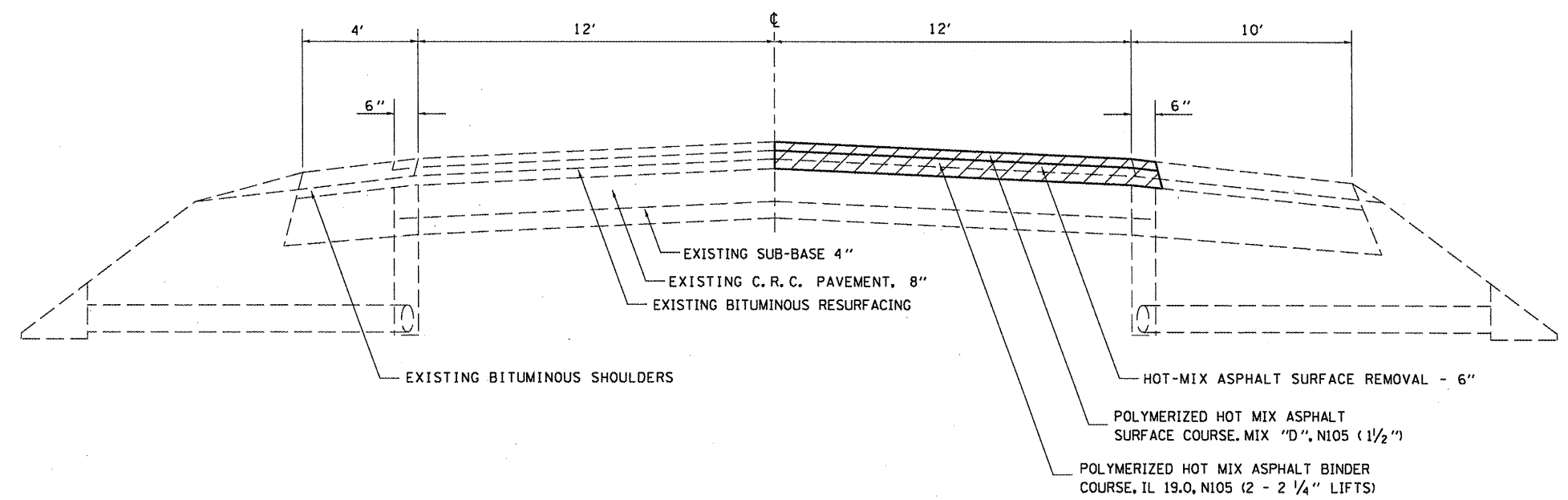
90% FED.  
10% STATE

SUMMARY OF QUANTITIES			TOTAL QUANTITIES	CONSTRUCTION TYPE CODE
CODE NO	ITEM	UNIT		0005
40600100	BITUMINOUS MATERIALS (PRIME COAT)	GALLON	1048	1048
40600300	AGGREGATE (PRIME COAT)	TON	21	21
40603245	POLYMERIZED HOT-MIX ASPHALT BINDER COURSE, IL-19.0, N105	TON	2970	2970
40603550	POLYMERIZED HOT-MIX ASPHALT SURFACE COURSE, MIX "D", N105	TON	880	880
44000173	HOT-MIX ASPHALT SURFACE REMOVAL, 6"	SQ YD	7081	7081
44000186	HOT-MIX ASPHALT SURFACE REMOVAL, 9"	SQ YD	1454	1454
67100100	MOBILIZATION	L SUM	1	1
70100800	TRAFFIC CONTROL AND PROTECTION, STANDARD 701401	L SUM	1	1
70103815	TRAFFIC CONTROL SURVEILLANCE	CAL DA	8	8
70300100	SHORT TERM PAVEMENT MARKING	FOOT	3169	3169
70301000	WORK ZONE PAVEMENT MARKING REMOVAL	SQ FT	1056	1056
* 78004230	* PREFORMED PLASTIC PAVEMENT MARKING, TYPE B - INLAID - LINE 6"	FOOT	1910	1910
* 78005110	* EPOXY PAVEMENT MARKING - LINE 4"	FOOT	7545	7545
* 78100100	* RAISED REFLECTIVE PAVEMENT MARKER	EACH	196	196
X4401198	HOT-MIX ASPHALT SURFACE REMOVAL, VARIABLE DEPTH	SQ YD	1944	1944

\* SPECIALTY ITEM

FILE NAME =	USER NAME = swartzrk	DESIGNED -	REVISED -	<b>STATE OF ILLINOIS DEPARTMENT OF TRANSPORTATION</b>	<b>SUMMARY OF QUANTITIES</b>				F.A.I. RTE.	SECTION	COUNTY	TOTAL SHEETS	SHEET NO.
c:\pwork\pwork\swartzrk\0268526\077	622-shr-soq.dgn	DRAWN -	REVISED -		70	D7 HMA RESURF 2012-1	FAYETTE	14	3				
PLOT SCALE = 100.0000' / in.	CHECKED -	REVISED -			CONTRACT NO. 74522								
PLOT DATE = 5/24/2011	DATE -	REVISED -			SCALE: NA	SHEET NO. 1 OF 1 SHEETS	STA. TO STA.	ILLINOIS FED. AID PROJECT					

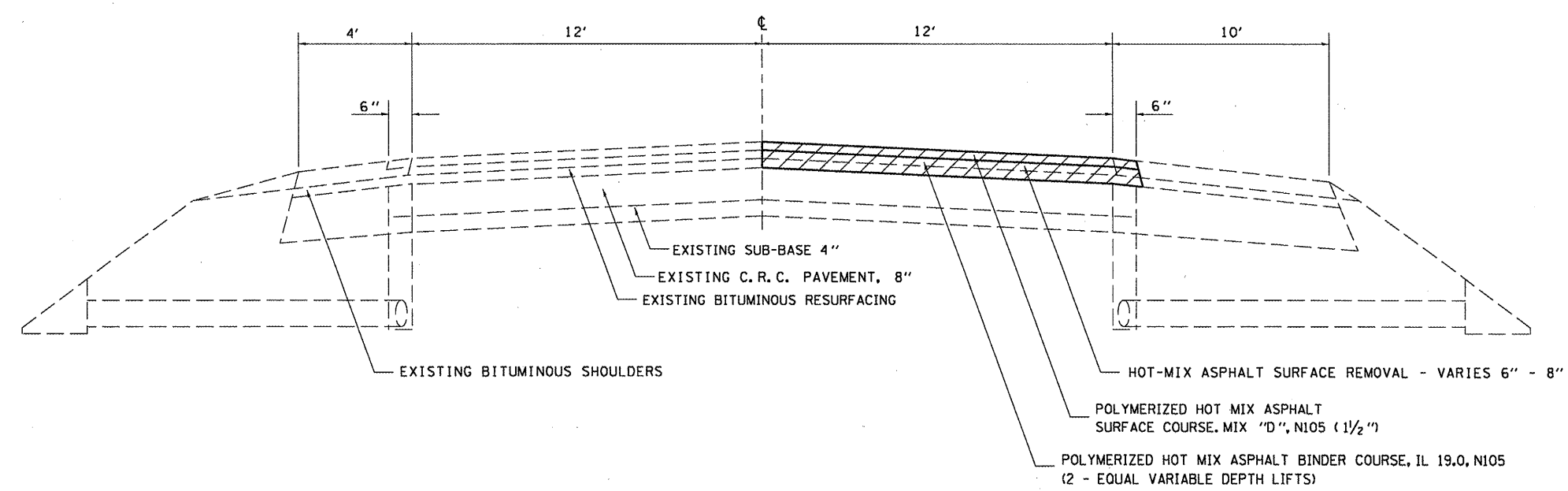
**TYPICAL CROSS SECTION**  
 F. A. I. 70 EASTBOUND DRIVING LANE ONLY  
 STATION 3033+80 TO STATION 1533+00 - LOCATION #1 (PARTIAL)  
 STATION 275+30 TO STATION 285+86 - LOCATION #3  
 STATION 332+90 TO STATION 340+82 - LOCATION #4



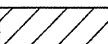
NOT DRAWN TO SCALE

 HOT-MIX ASPHALT SURFACE REMOVAL - 6"

**TYPICAL CROSS SECTION**  
 F. A. I. 70 EASTBOUND DRIVING LANE ONLY  
 STATION 1533+00 TO STATION 1547+00 - LOCATION #1 (PARTIAL)

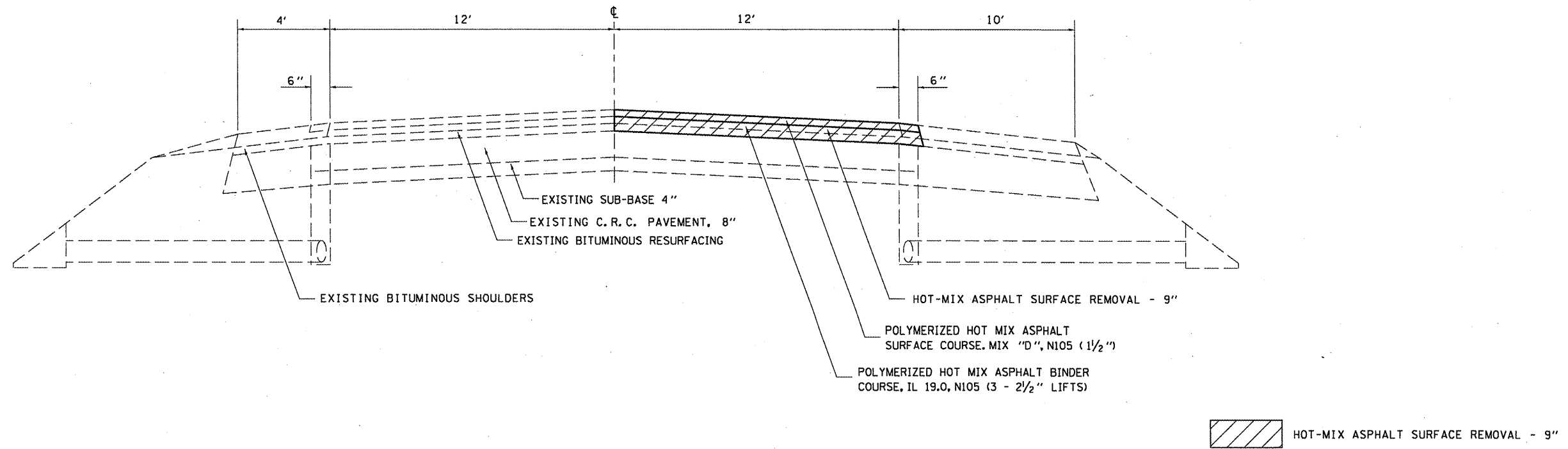


NOT DRAWN TO SCALE

 HOT-MIX ASPHALT SURFACE REMOVAL - VARIABLE DEPTH

FILE NAME = c:\pwwork\pwwork\swartzr\10268526\077	USER NAME = swartzr	DESIGNED -	REVISED -	<b>STATE OF ILLINOIS DEPARTMENT OF TRANSPORTATION</b>	<b>TYPICAL CROSS SECTIONS</b>			F.A.I. RTE.	SECTION	COUNTY	TOTAL SHEETS	SHEET NO.
	522-sh-typical.dgn	DRAWN -	REVISED -					70	D7 HMA RESURF 2012-1	FAYETTE	14	4
	PLOT SCALE = 100.0000' / 1" =	CHECKED -	REVISED -		SCALE: NA	SHEET NO. 1 OF 2 SHEETS	STA. TO STA.	CONTRACT NO. 74522				
	PLOT DATE = 5/20/2011	DATE -	REVISED -		ILLINOIS FED. AID PROJECT							

**TYPICAL CROSS SECTION**  
**F. A. I. 70 EASTBOUND DRIVING LANE ONLY**  
**STATION 126+75 TO STATION 137+22 - LOCATION #2**



NOT DRAWN TO SCALE

PAVING SCHEDULE		STATION TO STATION	LENGTH FEET	PAVEMENT WIDTH FEET	AREA SQ YD	HOT MIX ASPHALT SURFACE REMOVAL 6" SQ YD	HOT MIX ASPHALT SURFACE REMOVAL 9" SQ YD	HOT MIX ASPHALT SURFACE REMOVAL VARIABLE DEPTH SQ YD	BITUMINOUS MATERIALS (PRIME COAT) GALLON	AGGREGATE (PRIME COAT) TON	POLYMERIZED HOT MIX ASPHALT SURFACE COURSE, MIX "D", N105 TON	POLYMERIZED HOT MIX ASPHALT BINDER COURSE, IL-19.0, N105 TON	SHORT TERM PAVEMENT MARKING FT.	WORK ZONE PAVEMENT MARKING REMOVAL SQ. FT.	PERFORMED PLASTIC PAVEMENT MARKING, TYPE B-LINE 6" FT.	POLYUREA PAVEMENT MARKING, TYPE II-LINE 4" FT.	RAISED REFLECTIVE PAVEMENT MARKERS EACH
LOC 1		3033+80.00 TO 3038+74.48	494.5	12.5	686.8	686.8			68.7	1.4	57.7	173.1	207.6	69.2	130.0	494.5	14.0
LOC 1		3038+74.48 BK = 1505+44.2 AH											0.0	0.0	0.0	0.0	0.0
LOC 1		1505+44.20 TO 1533+00.00	2,755.8	12.5	3827.5	3827.5			382.8	7.7	321.5	964.5	1157.4	385.8	690.0	2755.8	70.0
LOC 1		1533+00.00 TO 1547+00.00	1,400.0	12.5	1944.4		1944.4	194.4	3.9	163.3	574.9	588.0	196.0	196.0	350.0	1400.0	36.0
LOC 2		126+75.00 TO 137+22.00	1,047.0	12.5	1454.2		1454.2	145.4	2.9	122.2	610.8	439.7	146.6	146.6	270.0	1047.0	28.0
LOC 3		275+30.00 TO 285+86.00	1,056.0	12.5	1466.7	1466.7		146.7	2.9	123.2	369.6	443.5	147.8	147.8	270.0	1056.0	28.0
LOC 4		332+90.00 TO 340+82.00	792.0	12.5	1100.0	1100.0		110.0	2.2	92.4	277.2	332.6	110.9	110.9	200.0	792.0	20.0
		TOTALS	7,545		10,480	7,081	1,454	1,944	1,048	21	880	2,970	3,169	1,056	1,910	7,545	196

FILE NAME =	USER NAME = swr-tzrw	DESIGNED -	REVISED -
cr:\pw\work\p1dot\swr-tzrw\d0268926\077	522-shr-typical.dgn	DRAWN -	REVISED -
	PLOT SCALE = 1/8" = 1' / 1/8"	CHECKED -	REVISED -
	PLOT DATE = 5/20/2011	DATE -	REVISED -

**STATE OF ILLINOIS**  
**DEPARTMENT OF TRANSPORTATION**

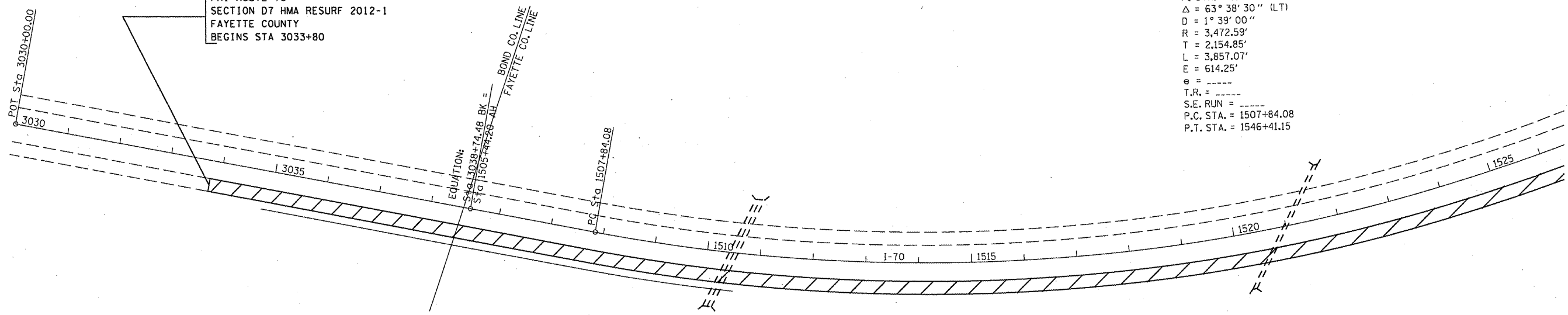
**TYPICAL CROSS SECTION**  
**AND PAVING SCHEDULE**

SCALE: NA SHEET NO. 2 OF 2 SHEETS STA. TO STA.

F.A.I. RTE.	SECTION	COUNTY	TOTAL SHEETS	SHEET NO.
70	D7 HMA RESURF 2012-1	FAYETTE	14	5
CONTRACT NO. 74522			ILLINOIS FED. AID PROJECT	



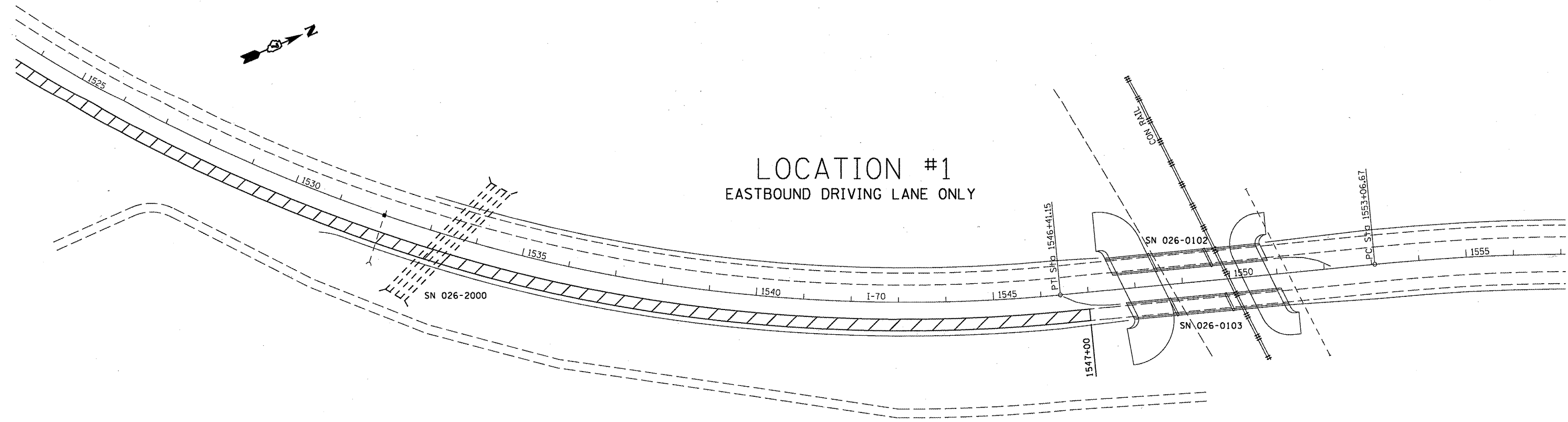
FA1 ROUTE 70  
SECTION D7 HMA RESURF 2012-1  
FAYETTE COUNTY  
BEGINS STA 3033+80



EXIST. CURVE 7  
PI STA. = 1529+38.93  
 $\Delta = 63^\circ 38' 30''$  (LT)  
D = 1° 39' 00"  
R = 3,472.59'  
T = 2,154.85'  
L = 3,857.07'  
E = 614.25'  
e = -----  
T.R. = -----  
S.E. RUN = -----  
P.C. STA. = 1507+84.08  
P.T. STA. = 1546+41.15

LOCATION #1  
EASTBOUND DRIVING LANE ONLY

NOT DRAWN TO SCALE



LOCATION #1  
EASTBOUND DRIVING LANE ONLY

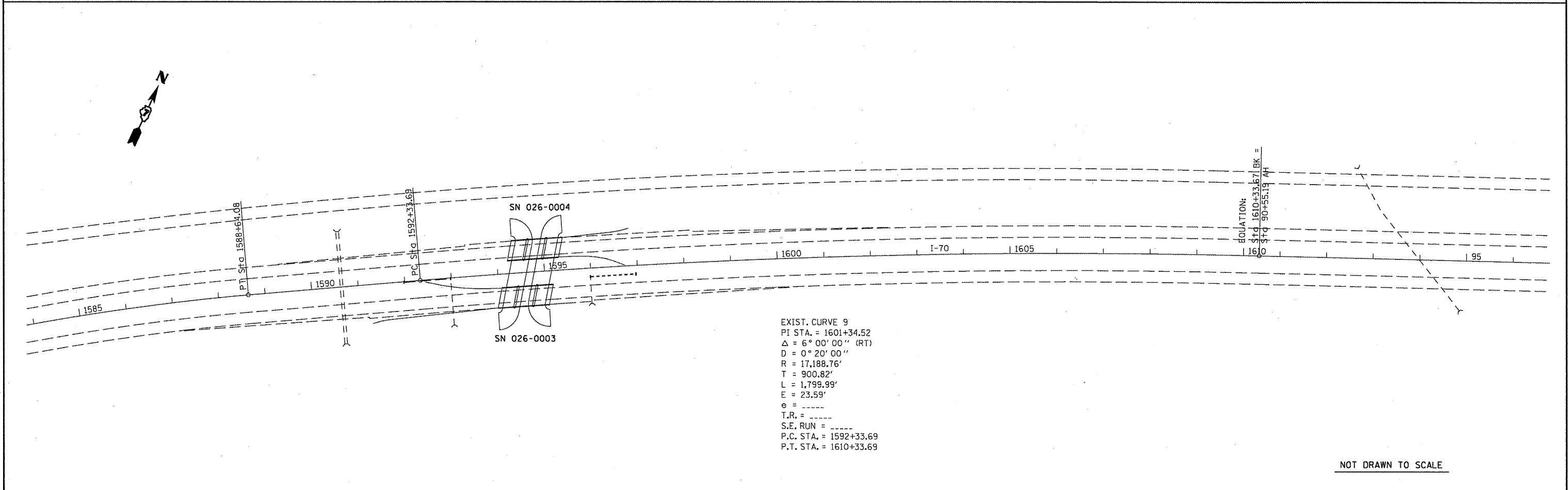
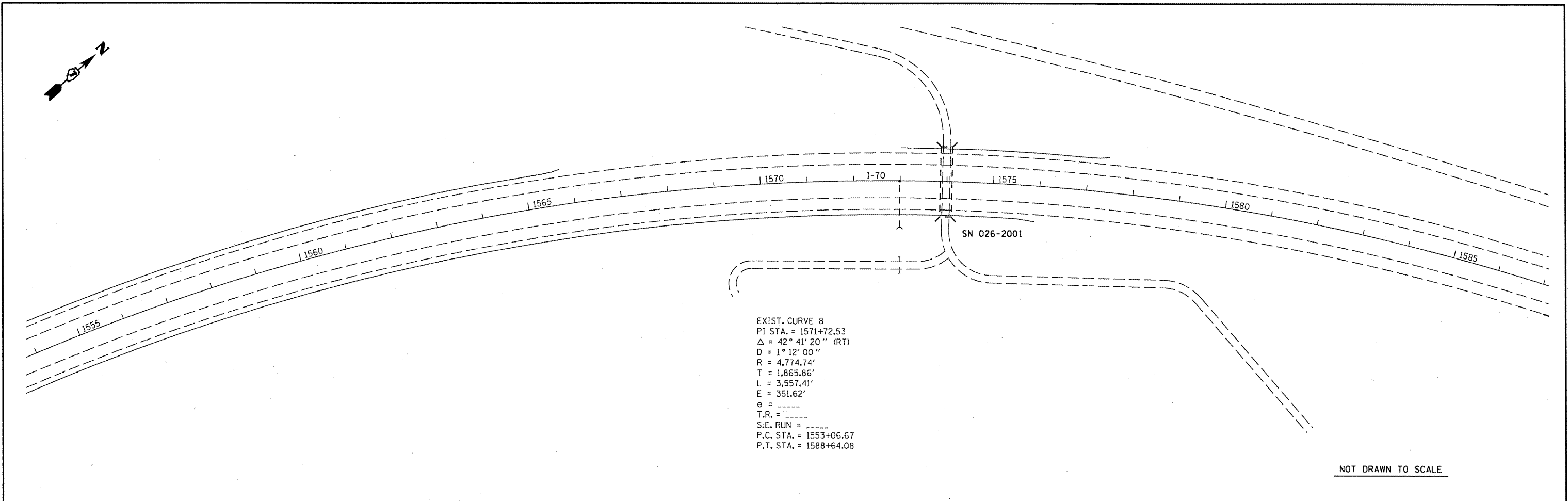
NOT DRAWN TO SCALE

FILE NAME =	USER NAME = swartzw	DESIGNED -	REVISED -
ct:\pw_work\pmdot\swartzw\d0268526\077	522-shr-plan.dgn	DRAWN -	REVISED -
	PLOT SCALE = 200.0000' / 1 in.	CHECKED -	REVISED -
	PLOT DATE = 5/20/2011	DATE -	REVISED -

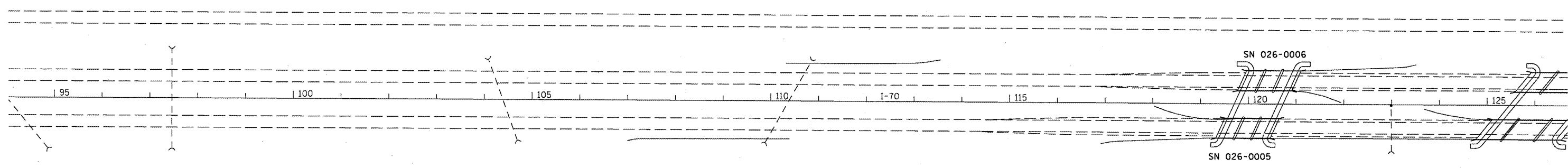
STATE OF ILLINOIS  
DEPARTMENT OF TRANSPORTATION

PLAN  
SCALE: NA SHEET NO. 1 OF 7 SHEETS STA. 3033+80 TO STA. 1557+00

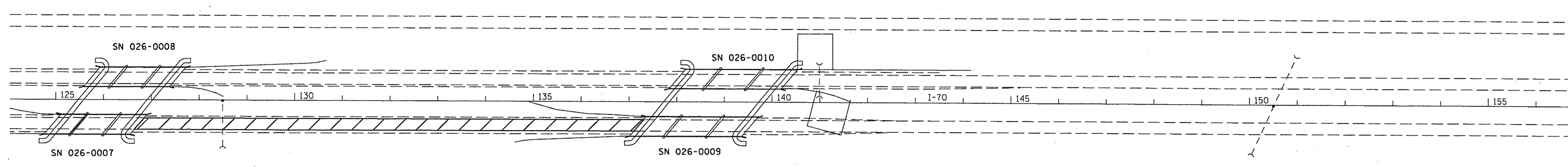
F.A.I. RTE.	SECTION	COUNTY	TOTAL SHEETS	SHEET NO.
70	D7 HMA RESURF 2012-1	FAYETTE	12	6
CONTRACT NO. 74522			ILLINOIS FED. AID PROJECT	



FILE NAME =	USER NAME = swartzrw	DESIGNED -	REVISED -	<b>STATE OF ILLINOIS DEPARTMENT OF TRANSPORTATION</b>	<b>PLAN</b>			F.A.I. RTE.	SECTION	COUNTY	TOTAL SHEETS	SHEET NO.	
c:\pwwork\pwwork\swartzrw\d0268526\077	522-sht-plan.dgn	DRAWN -	REVISED -		SCALE: NA	SHEET NO. 2 OF 7 SHEETS	STA. 1554+00 TO STA. 96+00	70	D7 HMA RESURF 2012-1	FAYETTE	12	7	
	PLOT SCALE = 200.0000' / in.	CHECKED -	REVISED -										CONTRACT NO. 74522
	PLOT DATE = 5/28/2011	DATE -	REVISED -										ILLINOIS FED. AID PROJECT



NOT DRAWN TO SCALE

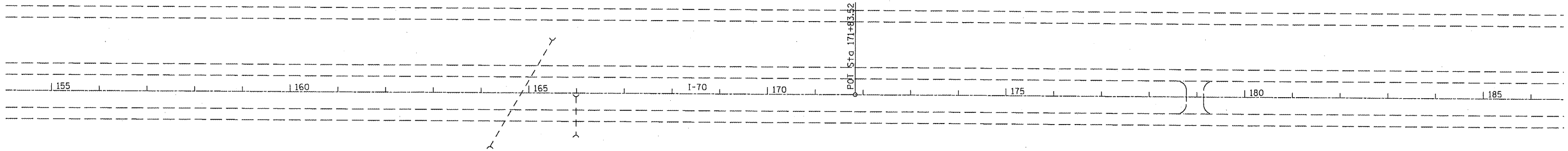


LOCATION #2  
EASTBOUND DRIVING LANE ONLY

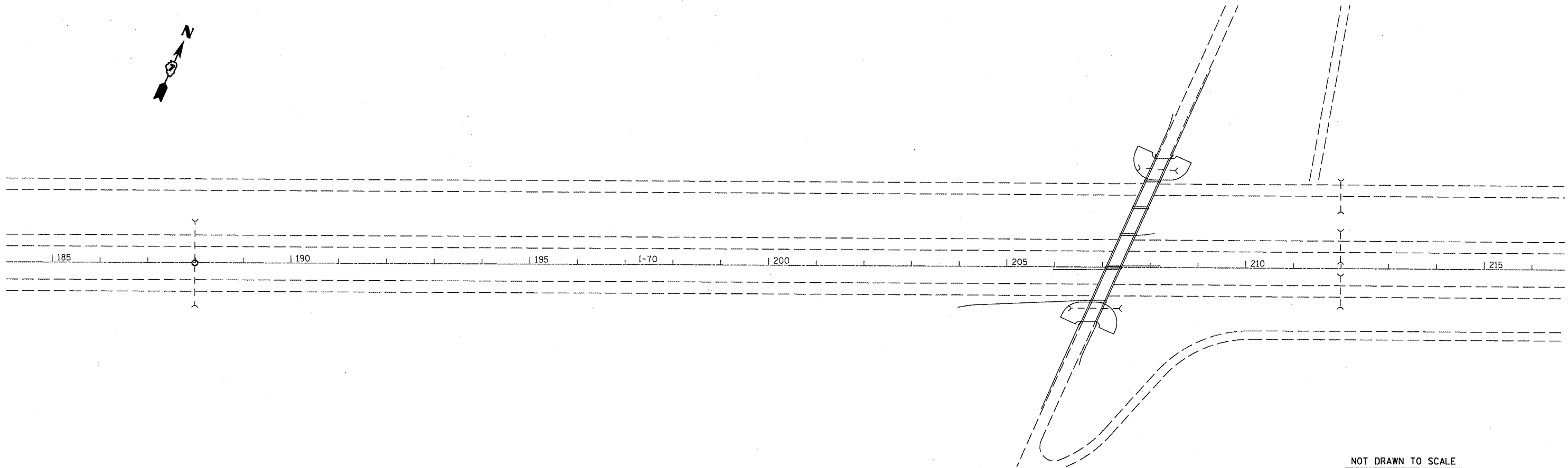
NOT DRAWN TO SCALE

FILE NAME = c:\pwork\pwork\swartzw\ld0268526\077	USER NAME = swartzw	DESIGNED -	REVISED -	<b>STATE OF ILLINOIS DEPARTMENT OF TRANSPORTATION</b>	<b>PLAN</b>			F.A.I. RTE.	SECTION	COUNTY	TOTAL SHEETS	SHEET NO.
	522-sht-plen.dgn	DRAWN -	REVISED -		SCALE: NA	SHEET NO. 3 OF 7 SHEETS	STA. 95+00 TO STA. 156+00	70	DT HMA RESURF 2012-1	FAYETTE	12	8
	PLOT SCALE = 200.0000' / in.	CHECKED -	REVISED -					CONTRACT NO. 74522				
	PLOT DATE = 5/20/2011	DATE -	REVISED -					ILLINOIS FED. AID PROJECT				





NOT DRAWN TO SCALE



NOT DRAWN TO SCALE

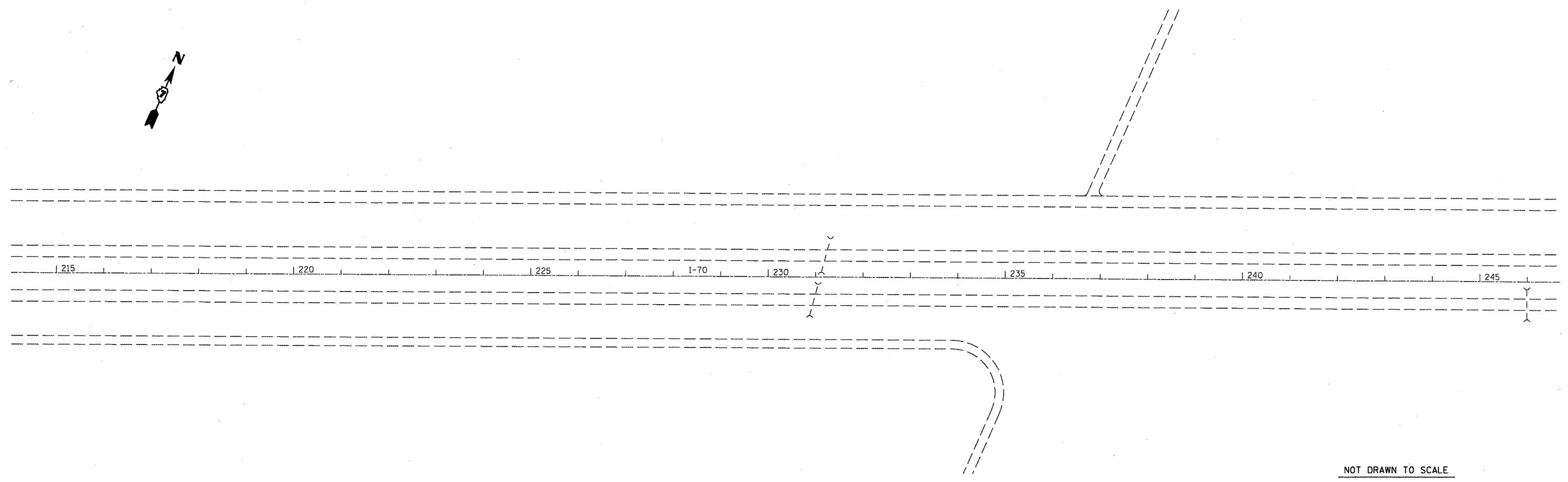
FILE NAME = c:\pwwork\pwwork\swartzr\08268526\077	USER NAME = swartzr 522-shr-plan.dgn	DESIGNED - DRAWN -	REVISED - REVISED -
	PLOT SCALE = 200.0000' / in.	CHECKED -	REVISED -
	PLOT DATE = 5/20/2011	DATE -	REVISED -

**STATE OF ILLINOIS  
DEPARTMENT OF TRANSPORTATION**

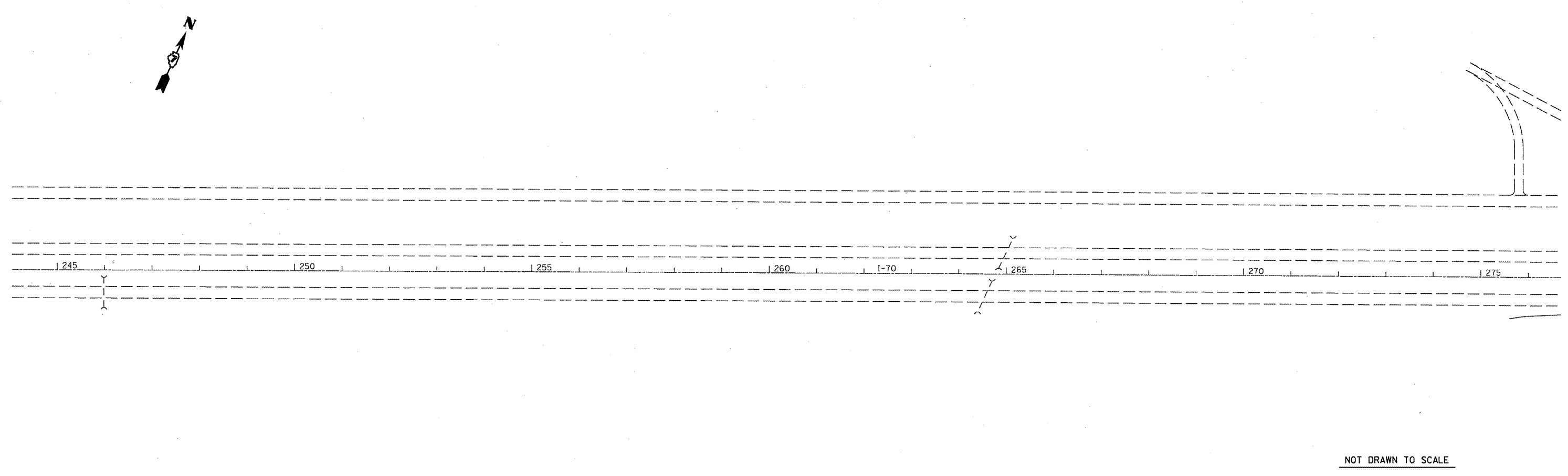
**PLAN**

SCALE: NA    SHEET NO. 4 OF 7 SHEETS    STA. 155+00 TO STA. 216+00

F.A.I. RTE.	SECTION	COUNTY	TOTAL SHEETS	SHEET NO.
70	D7 HMA RESURF 2012-1	FAYETTE	12	9
CONTRACT NO. 74522				
ILLINOIS FED. AID PROJECT				

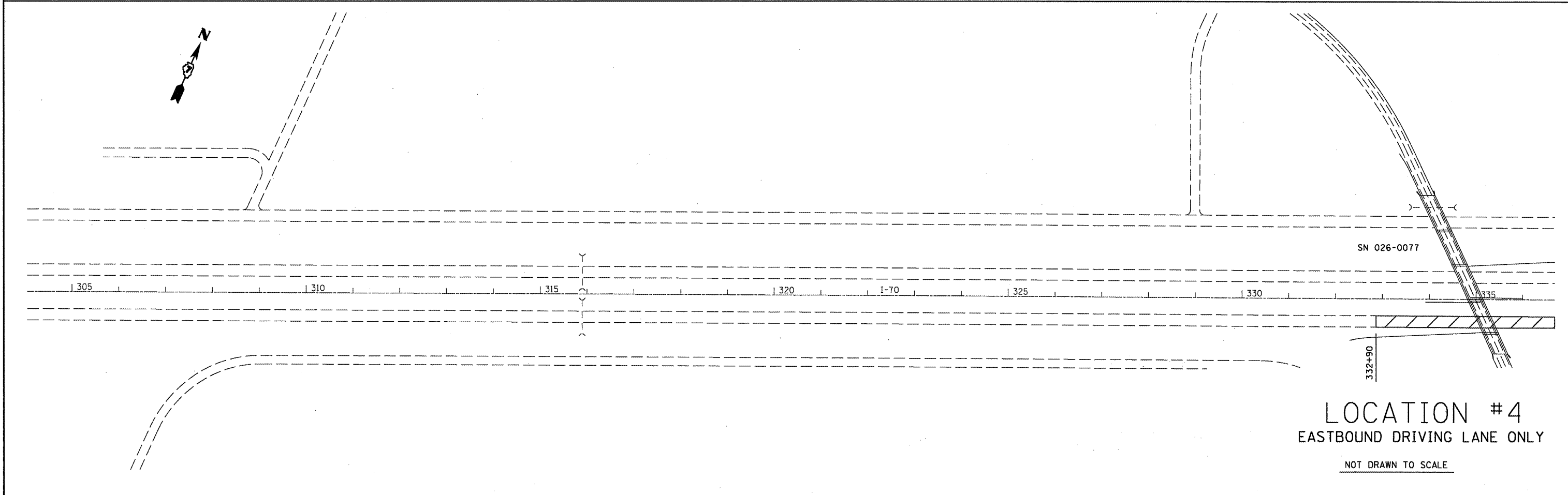
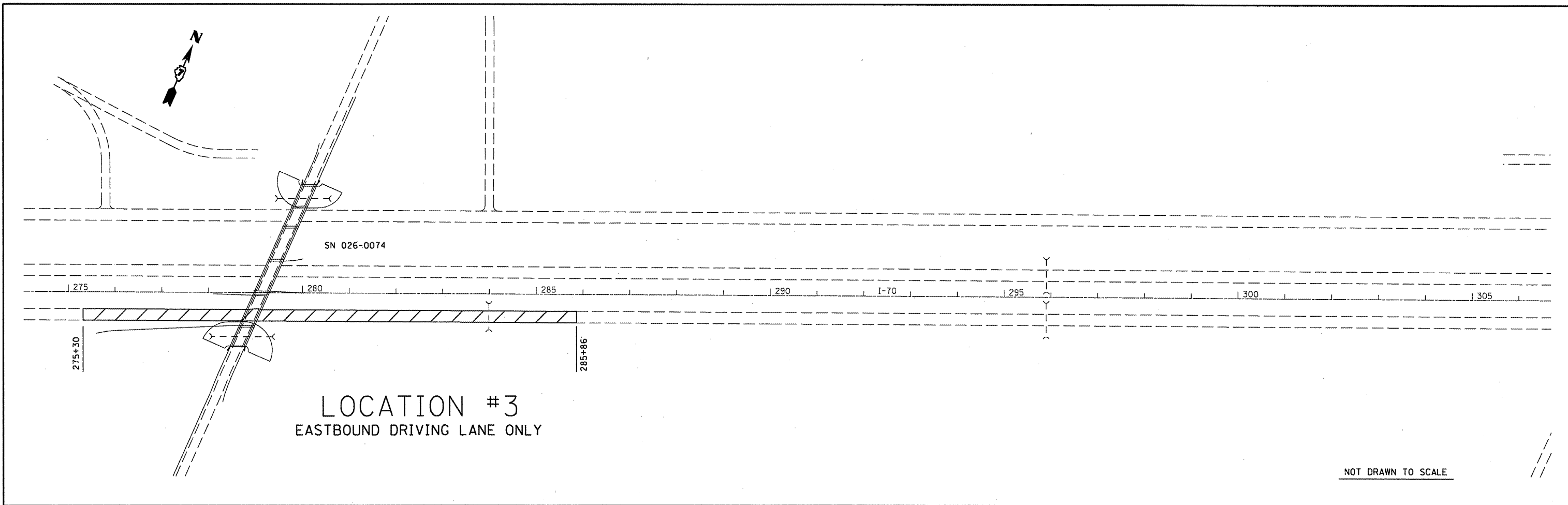


NOT DRAWN TO SCALE



NOT DRAWN TO SCALE

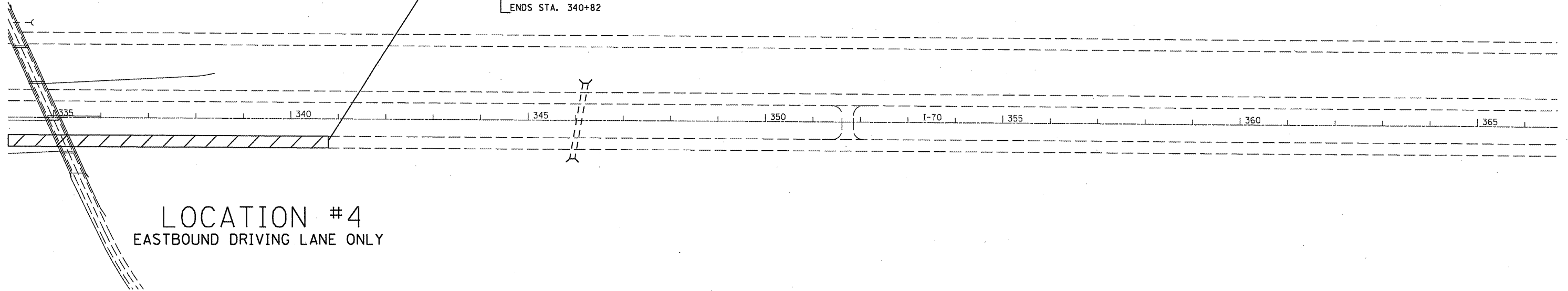
FILE NAME = c:\pw\work\p\dot\swartzrw\d0268526\077	USER NAME = swartzrw	DESIGNED -	REVISED -	<b>STATE OF ILLINOIS DEPARTMENT OF TRANSPORTATION</b>	<b>PLAN</b>			F.A.I. RTE.	SECTION	COUNTY	TOTAL SHEETS	SHEET NO.
	522-sht-pln.dgn	DRAWN -	REVISED -		70	DT HMA RESURF 2012-1	FAYETTE	12	10			
PLOT SCALE = 200.0000' / in.	CHECKED -	REVISED -			SCALE: NA	SHEET NO. 5 OF 7 SHEETS	STA. 215+00 TO STA. 276+00	<b>CONTRACT NO. 74522</b>				
PLOT DATE = 5/20/2011	DATE -	REVISED -			ILLINOIS FED. AID PROJECT							



FILE NAME =	USER NAME = swartzrw	DESIGNED -	REVISED -	<b>STATE OF ILLINOIS DEPARTMENT OF TRANSPORTATION</b>	<b>PLAN</b>		F.A.I. RTE.	SECTION	COUNTY	TOTAL SHEETS	SHEET NO.	
et\pwork\pwork\swartzrw\d0268526\077	522-shr-plan.dgn	DRAWN -	REVISED -		SCALE: NA	SHEET NO. 6 OF 7 SHEETS	STA. 275+00 TO STA. 336+00	70	DT HMA RESURF 2012-1	FAYETTE	12	11
	PLOT SCALE = 200.0000' / in.	CHECKED -	REVISED -					CONTRACT NO. 74522				
	PLOT DATE = 5/20/2011	DATE -	REVISED -					ILLINOIS FED. AID PROJECT				

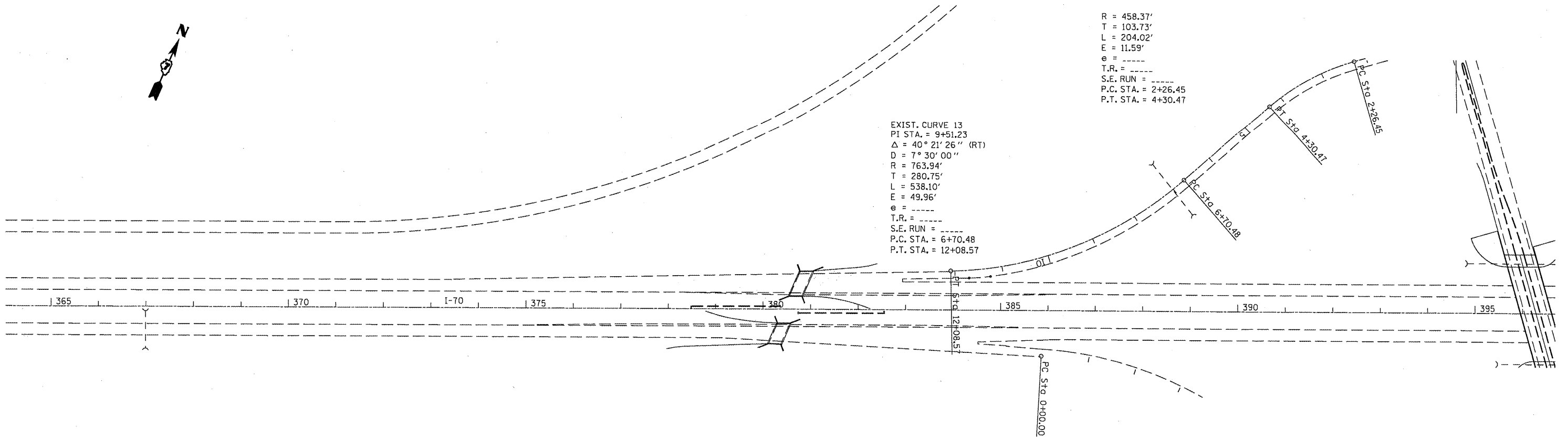


FAI ROUTE 70  
SECTION D7 HMA RESURF 2012-1  
FAYETTE COUNTY  
ENDS STA. 340+82



LOCATION #4  
EASTBOUND DRIVING LANE ONLY

NOT DRAWN TO SCALE



EXIST. CURVE 13  
PI STA. = 9+51.23  
 $\Delta = 40^\circ 21' 26''$  (RT)  
D = 7° 30' 00"  
R = 763.94'  
T = 280.75'  
L = 538.10'  
E = 49.96'  
e = -----  
T.R. = -----  
S.E. RUN = -----  
P.C. STA. = 6+70.48  
P.T. STA. = 12+08.57

R = 458.37'  
T = 103.73'  
L = 204.02'  
E = 11.59'  
e = -----  
T.R. = -----  
S.E. RUN = -----  
P.C. STA. = 2+26.45  
P.T. STA. = 4+30.47

NOT DRAWN TO SCALE

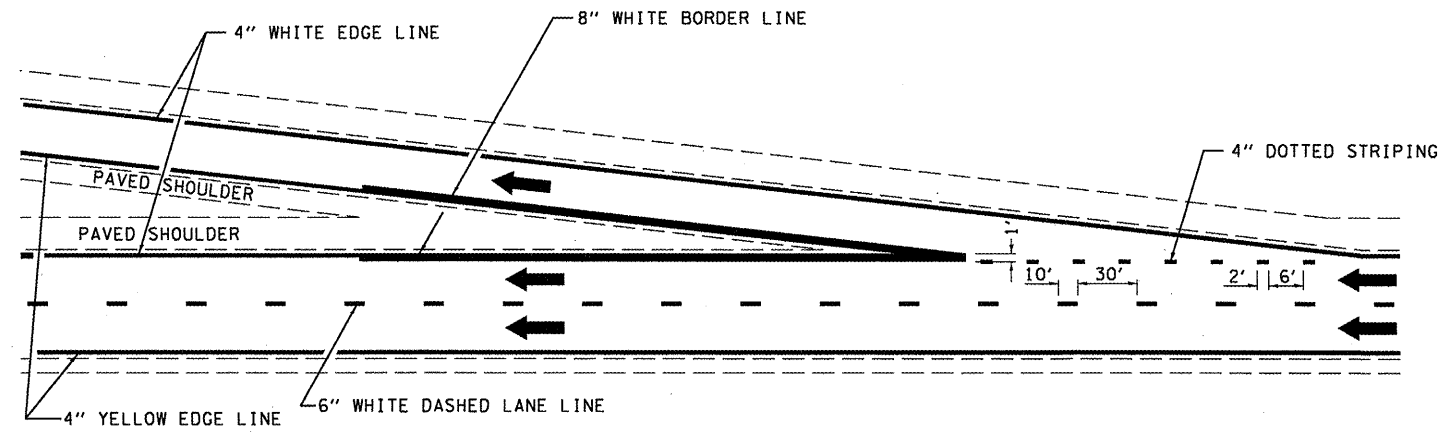
FILE NAME =	USER NAME = swartzrw	DESIGNED -	REVISED -
c:\pw_work\p\p\dot\swartzrw\d0268526\077	522-sht-plan.dgn	DRAWN -	REVISED -
	PLOT SCALE = 200.0000' / 1in.	CHECKED -	REVISED -
	PLOT DATE = 5/20/2011	DATE -	REVISED -

STATE OF ILLINOIS  
DEPARTMENT OF TRANSPORTATION

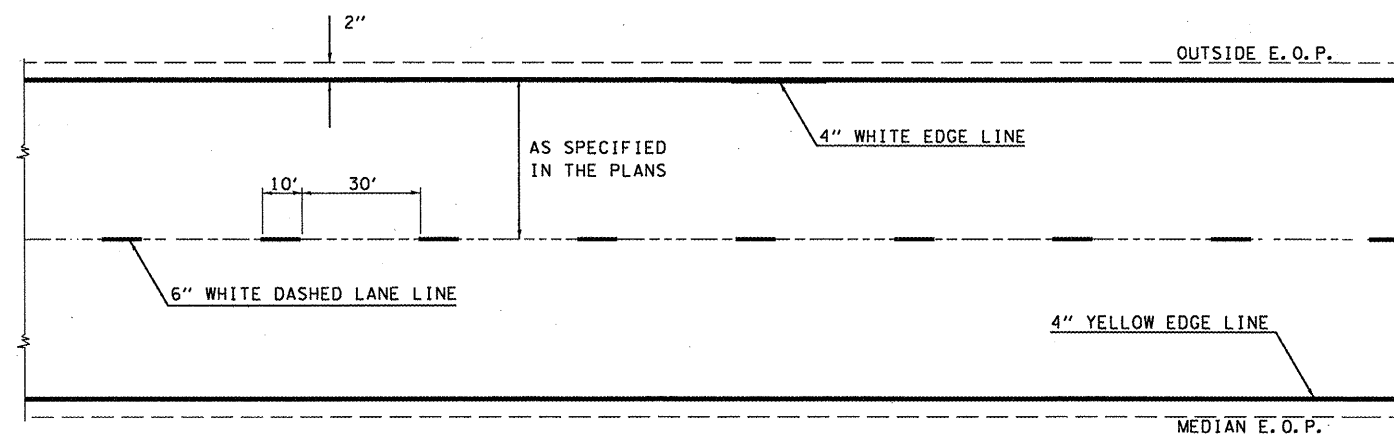
PLAN

SCALE: NA SHEET NO. 7 OF 7 SHEETS STA. 335+00 TO STA. 396+00

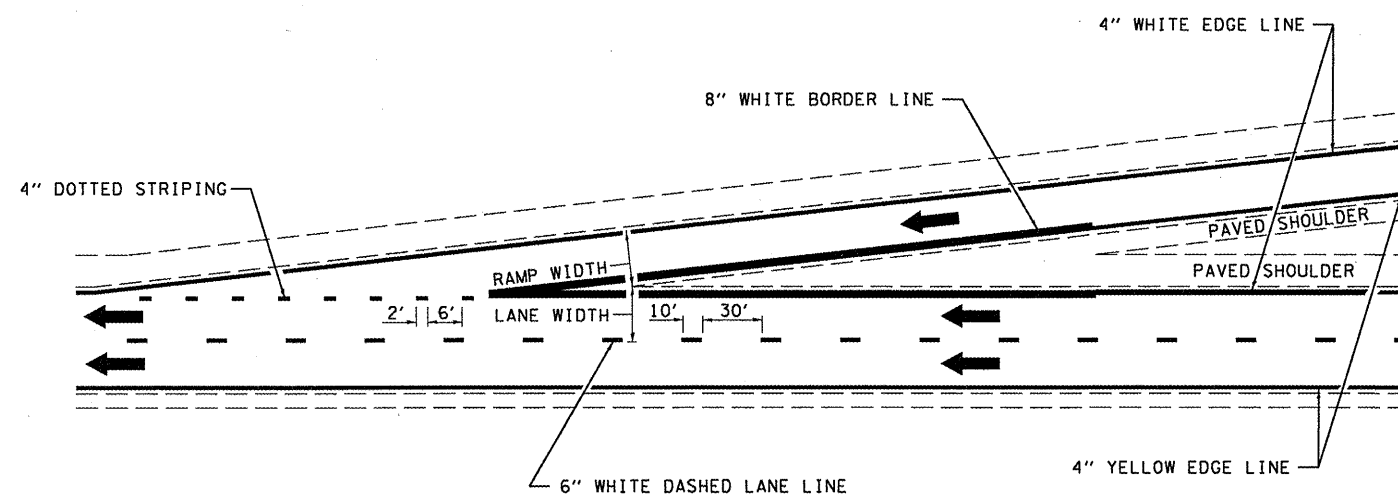
F.A.I. RTE.	SECTION	COUNTY	TOTAL SHEETS	SHEET NO.
70	D7 HMA RESURF 2012-1	FAYETTE	12	12
CONTRACT NO. 74522				
ILLINOIS FED. AID PROJECT				



TYPICAL EXIT RAMP MARKING



TYPICAL CENTERLINE & EDGELINE MARKINGS



TYPICAL ENTRANCE RAMP MARKING

NOT TO SCALE

FILE NAME =  
c:\pwwork\pwwork\swartzr\ld0268526\077

USER NAME = swartzr  
522-shr-details.dgn  
PLOT SCALE = 100.0000' / 1" =  
PLOT DATE = 5/20/2011

DESIGNED -  
DRAWN -  
CHECKED -  
DATE -

REVISED - DRM 08-04  
REVISED - MKS 04-08  
REVISED - DRM 01-09  
REVISED - DRM 12-10

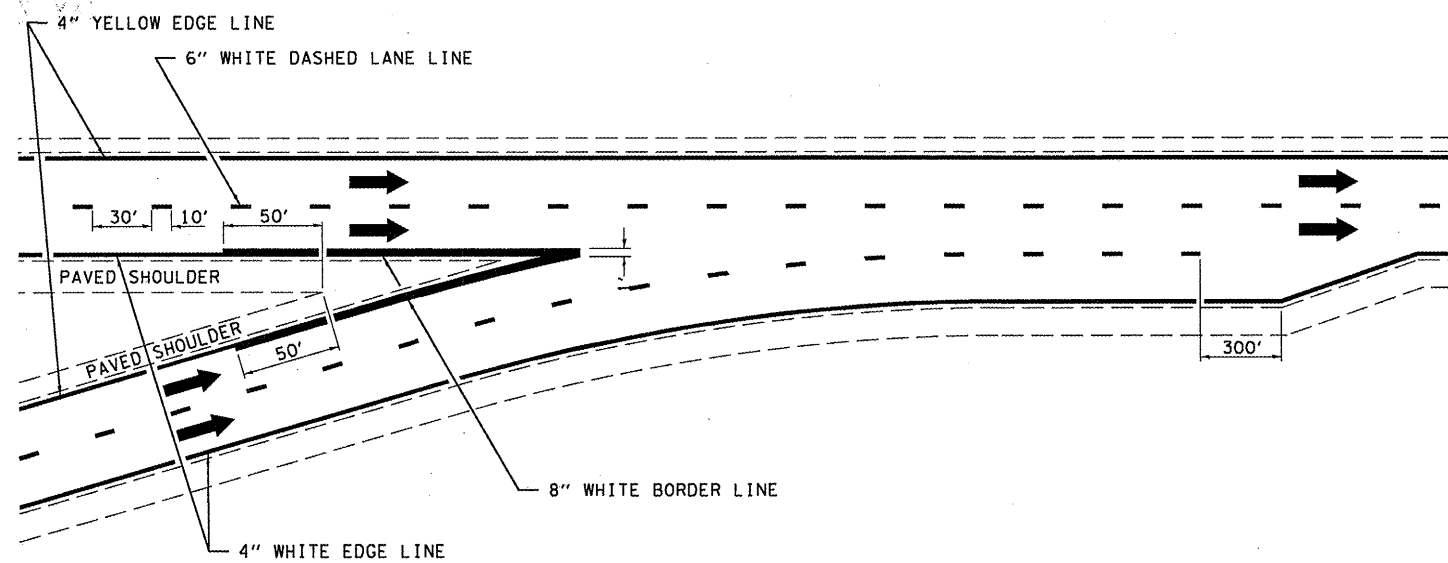
STATE OF ILLINOIS  
DEPARTMENT OF TRANSPORTATION

TYPICAL APPLICATIONS OF INTERSTATE PAVEMENT MARKING

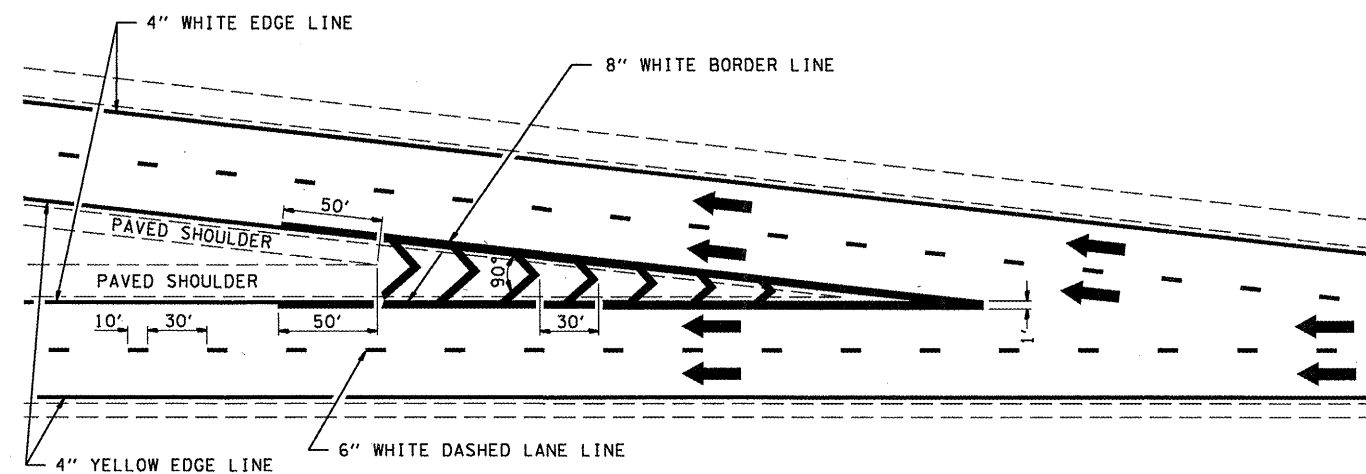
SCALE: NA SHEET NO. 1 OF 2 SHEETS STA. TO STA.

DISTRICT 7 DETAIL NO. 78000002

F.A.I. RTE.	SECTION	COUNTY	TOTAL SHEETS	SHEET NO.
70	D7 HMA RESURF 2012-1	FAYETTE	14	13
CONTRACT NO. 74522				
FED. ROAD DIST. NO. ILLINOIS FED. AID PROJECT				

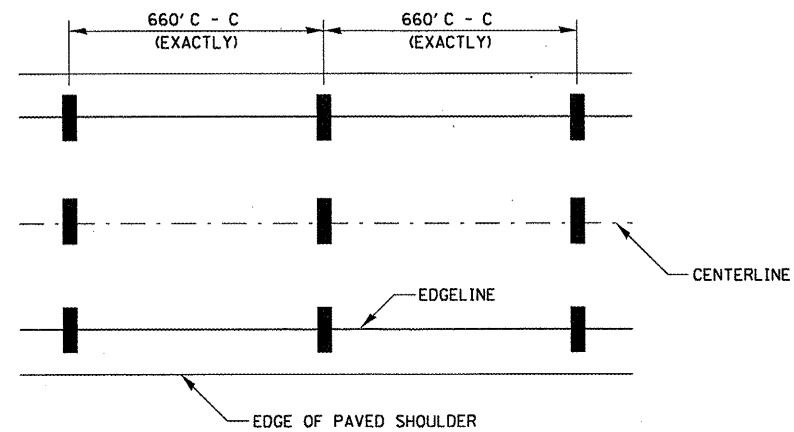


TYPICAL CONVERGENCE MARKING

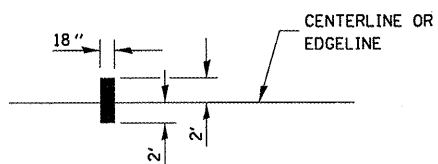


TYPICAL DIVERGENCE MARKING

AERIAL SPEED CHECK ZONES



IT WILL BE NECESSARY TO HAVE A REPRESENTATIVE OF THE STATE POLICE PRESENT SO THAT THE ACCURACY OF MEASUREMENT CAN BE ATTESTED TO IN COURT.



NOT TO SCALE

DISTRICT 7 DETAIL NO. 78000002

FILE NAME =	USER NAME = swartzrw	DESIGNED -	REVISED - MMO 12-99
c:\pw\work\p\dot\swartzrw\d8268526\077	522-shd-detail1.dgn	DRAWN -	REVISED - DRM 08-04
	PLOT SCALE = 100.0000' / 1"	CHECKED -	REVISED - MKS 04-08
	PLOT DATE = 5/20/2011	DATE -	REVISED - DRM 01-09

STATE OF ILLINOIS  
DEPARTMENT OF TRANSPORTATION

TYPICAL APPLICATIONS OF INTERSTATE PAVEMENT MARKING

SCALE: NA SHEET NO. 2 OF 2 SHEETS STA. TO STA.

F.A.I. RTE.	SECTION	COUNTY	TOTAL SHEETS	SHEET NO.
70	D7 HMA RESURF 2012-1	FAYETTE	14	14
CONTRACT NO. 74522				
FED. ROAD DIST. NO.		ILLINOIS FED. AID PROJECT		