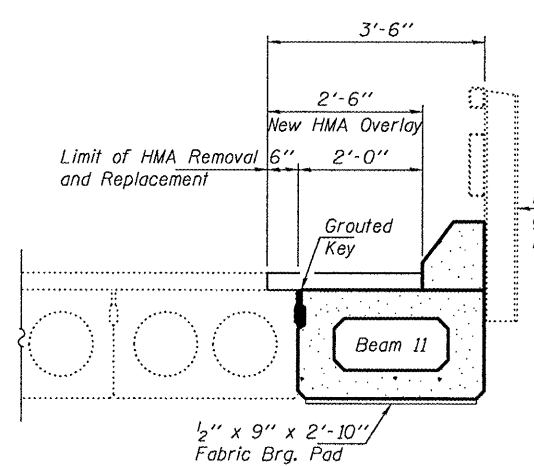
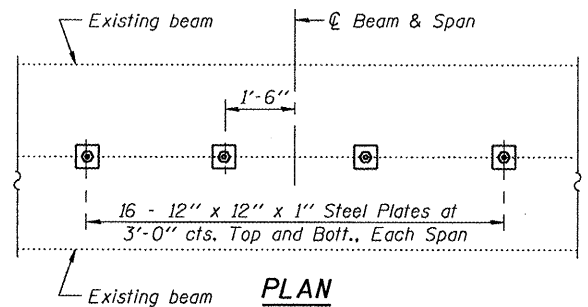


SECTION THRU SPAN 1, BEAM 6

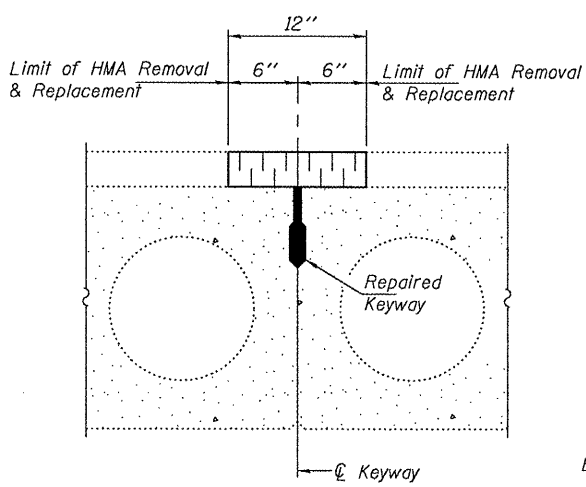


SECTION THRU SPAN 2, BEAM 11

Remove, store, & re-install existing guard rail. See sheet 5 of 5 for Rail Post Anchor Device Details.

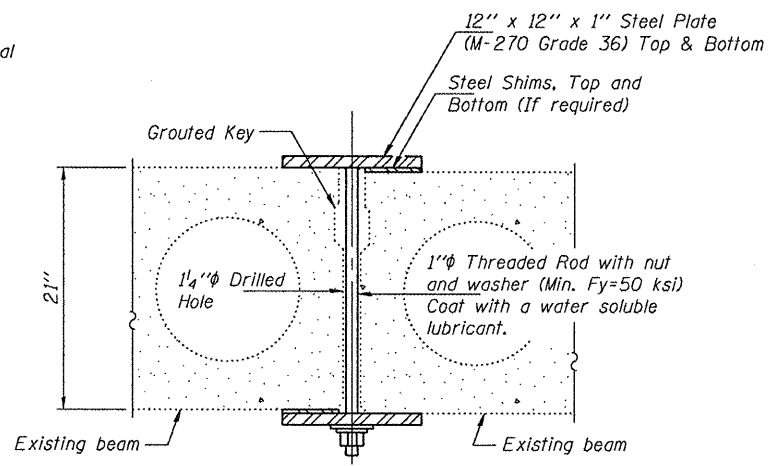


PLAN

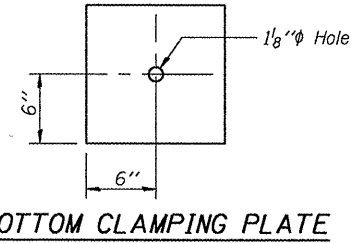


SECTION THRU KEYWAY REPAIR

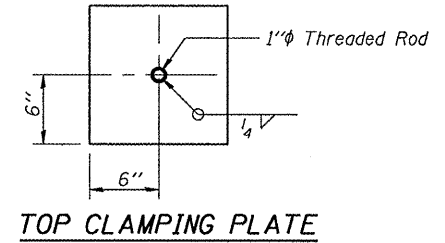
(Shear Key Clamping Device not shown for clarity.)



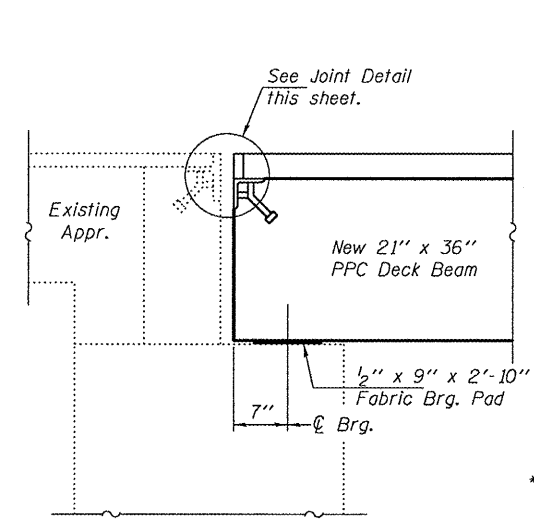
SECTION



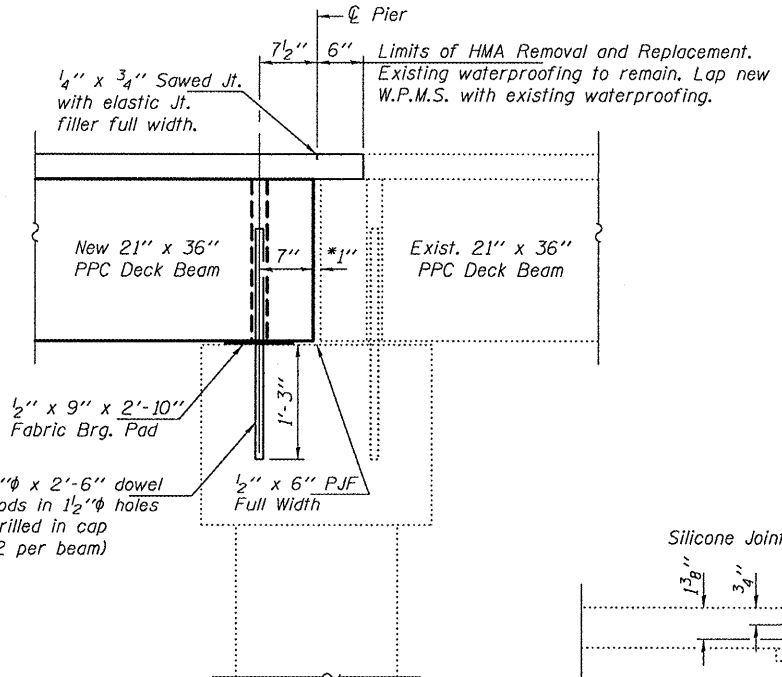
BOTTOM CLAMPING PLATE



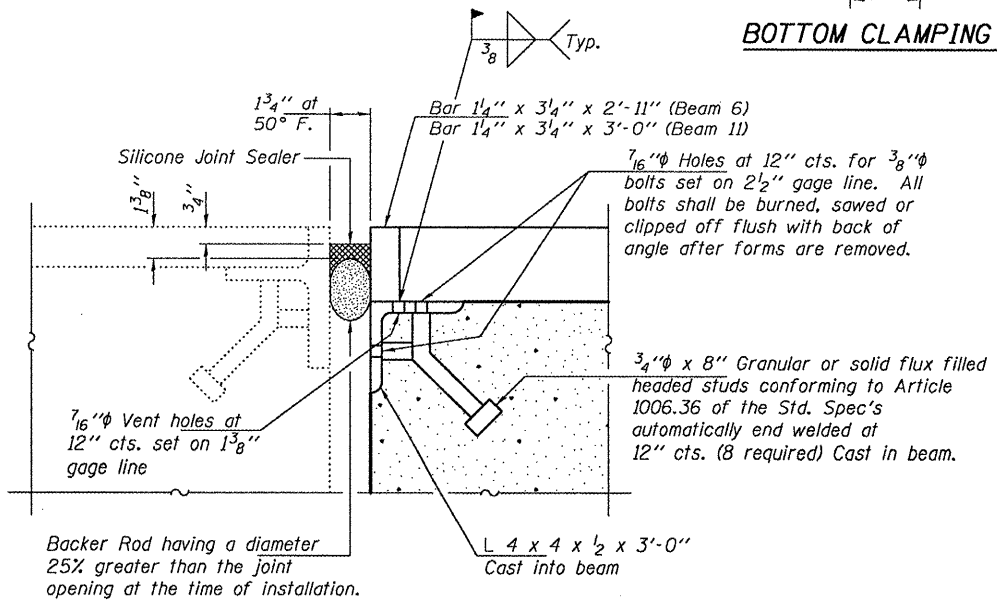
TOP CLAMPING PLATE



TYPICAL SECTION THRU ABUTMENT

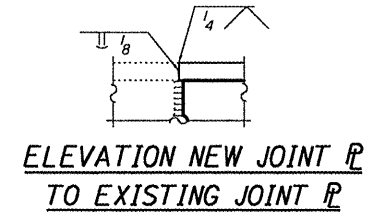


TYPICAL SECTION THRU PIER



EXPANSION JOINT DETAILS AT ABUTMENTS

(Cost included with PPC Deck Beams)



ELEVATION NEW JOINT TO EXISTING JOINT

DESIGNED - ATH	EXAMINED - <i>Joanne F. Jaffe</i>	DATE - JUNE 23, 2011
CHECKED - GGE	ACTING ENGINEER OF STRUCTURAL SERVICES	
DRAWN - Kyle M. Steffen	PASSED - <i>Carl P. ...</i>	
CHECKED - ATH GGE	ACTING ENGINEER OF BRIDGES AND STRUCTURES	

STATE OF ILLINOIS  
DEPARTMENT OF TRANSPORTATION

REPAIR DETAILS  
SN 017-0007

SHEET NO. 4 OF 5 SHEETS

F.A. RTE.	SECTION	COUNTY	TOTAL SHEETS	SHEET NO.
781	D-7 BEAM REPAIR 2012-1	CRAWFORD	10	9
CONTRACT NO. 74523			ILLINOIS FED. AID PROJECT	