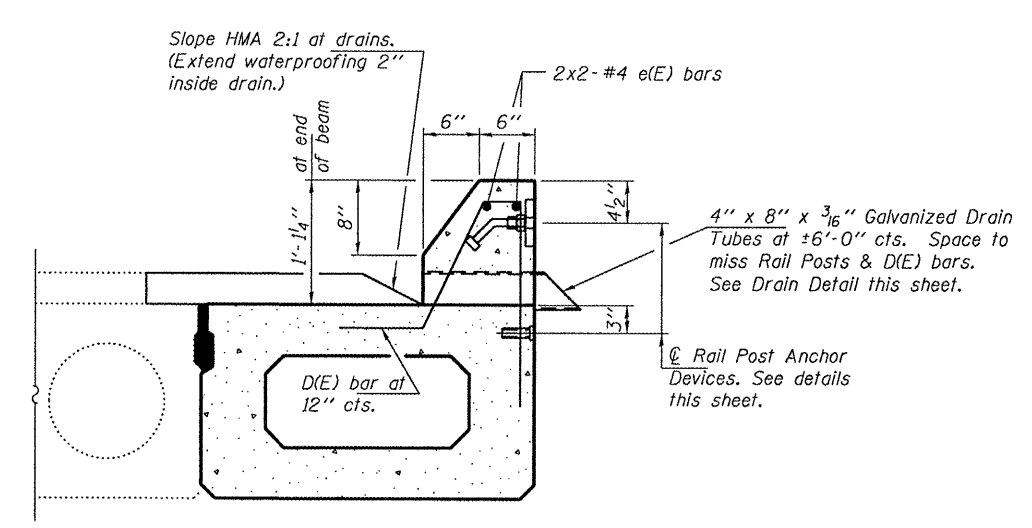
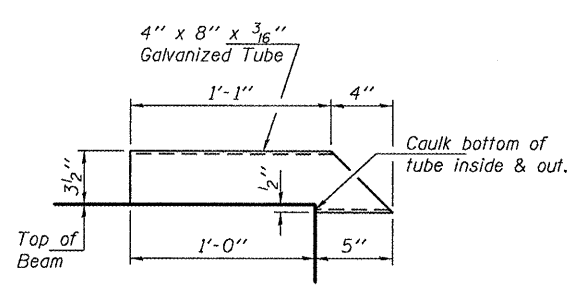


SECTION B-B

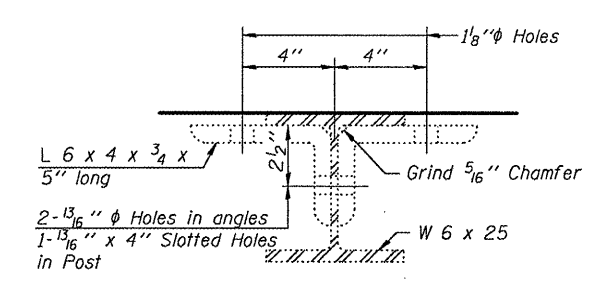
SECTION AT RAIL POST



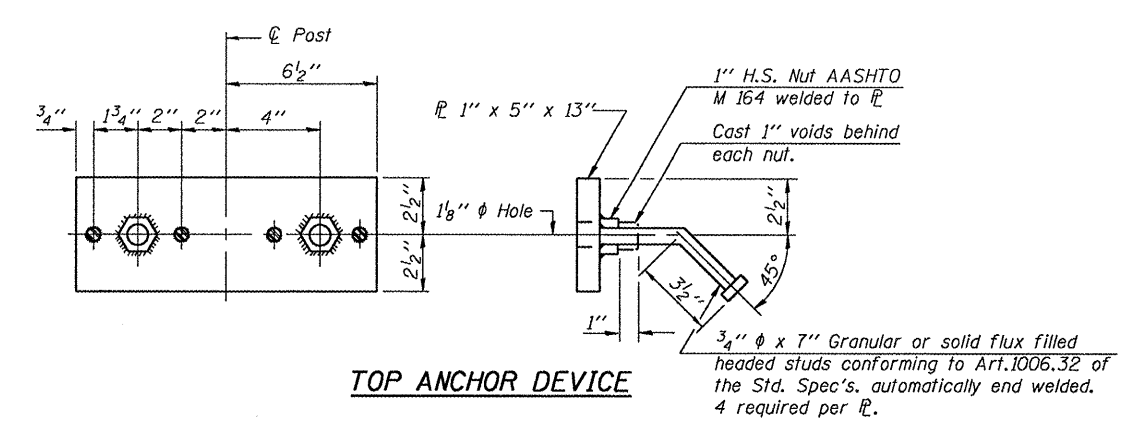
SECTION THRU CURB  
(Existing Rail Post not shown for clarity.)



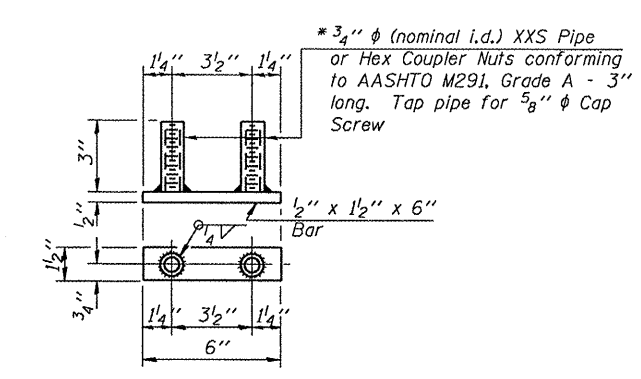
DRAIN TUBE DETAIL  
Cost included with Concrete Superstructure



SECTION C-C



TOP ANCHOR DEVICE



BOTTOM ANCHOR DEVICE

BILL OF MATERIAL

Bar	No.	Size	Length	Shape
e(E)	4	#4	25'-11"	---
Concrete Superstructure			Cu. Yd.	1.6
Reinforcement Bars, Epoxy Coated			Pound	70

Bars indicated thus 2 x 2-#4 etc. indicates 2 lines of bars with 2 lengths per line.

\* Threaded areas shall be plugged or blocked off during casting of beam.  
\*\* The studs of the anchor devices shall be placed below the top reinforcement bars and the outermost longitudinal reinforcement bar shall be placed directly above the studs of the rail post anchor device.

DESIGNED - ATH	EXAMINED - <i>Joey F. Hill</i>	DATE - JUNE 23, 2011
CHECKED - GGE	ACTING ENGINEER OF STRUCTURAL SERVICES	
DRAWN - Kyle M. Steffen	PASSED - <i>Carl Papp</i>	
CHECKED - ATH GGE	ACTING ENGINEER OF BRIDGES AND STRUCTURES	

STATE OF ILLINOIS  
DEPARTMENT OF TRANSPORTATION

RAIL POST ANCHOR DEVICE & DRAIN TUBE DETAILS  
SN 017-0007  
SHEET NO. 5 OF 5 SHEETS

F.A. RTE.	SECTION	COUNTY	TOTAL SHEETS	SHEET NO.
T81	D-7 BEAM REPAIR 2012-1	CRAWFORD	10	10
			CONTRACT NO. 74523	
ILLINOIS FED. AID PROJECT				