

F.A.P. RTE.	SECTION	COUNTY	TOTAL SHEETS	SHEET NO.
998	82-2-1HVB-1	ST. CLAIR	347	1
FED. ROAD DIST. NO.		ILLINOIS	CONTRACT NO. 76D05	
* 347 + 1 = 348				

STATE OF ILLINOIS
DEPARTMENT OF TRANSPORTATION
DIVISION OF HIGHWAYS

PROPOSED HIGHWAY PLANS

**FAP ROUTE 998 (RELOCATED I-70)
SECTION 82-2-1HVB-1**

**ST. CLAIR COUNTY
C-98-021-11**

PROPOSED RELOCATED IL ROUTE 3 BRIDGE OVER RELOCATED I-70 AND I-70 RAMP RETAINING WALLS

LIST OF STRUCTURAL WORK

RELOCATED IL RTE 3 OVER I-70
STR. NO. 082-0328 PROPOSED RELOCATED IL RTE 3 BRIDGE
STATION 1683+43.17, LENGTH = 174'.

RELOCATED IL RTE 3 OVER TRRA AND ST. CLAIR AVE.
STR. NO. 082-0329 PROPOSED RELOCATED IL RTE 3 BRIDGE
STATION 1679+16.65, LENGTH = 399'.

STRUCTURE NO. 082-W308 (650') & 082-W309 (800')
PROPOSED MSE WALLS.
ALL CONSTRUCTED IN THIS CONTRACT.

FOR INDEX OF SHEETS, SEE SHEET NO. 2

INTERSTATE 70
ADT = 59,940 (2030) 6,594 (30) INTERSTATE 48.96 (PCC-20)
DESIGN SPEED = 60 MPH
POSTED SPEED = 55 MPH

RELOCATED IL ROUTE 3
ADT = 34,760 (2030) 3,476(30) PRINCIPAL ARTERIAL 18.46 (PCC-20)
DESIGN SPEED = 45 MPH
POSTED SPEED = 40 MPH

RAMPS A-D
DESIGN SPEED = 50 MPH AT GORE, 35 MPH AT END
POSTED SPEED = 30 MPH
RAMP A ADT = 12,610 (2030) 1,214(30) INTERSTATE RAMP 14.30 (PCC-20)
RAMP B ADT = 6,010 (2030) 443(30) INTERSTATE RAMP 7.13 (PCC-20)
RAMP C ADT = 16,640 (2030)
RAMP D ADT = 16,640 (2030)

CONNECTOR ROAD
ADT = 26,550 (2030)
DESIGN SPEED = 35 MPH
POSTED SPEED = 30 MPH

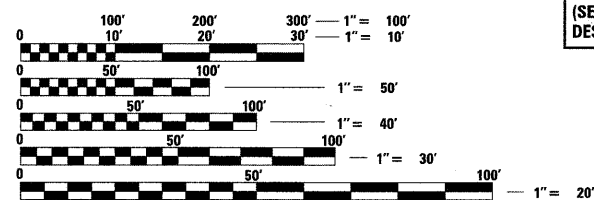
EXCHANGE AVENUE
ADT = 16,940 (2030)
DESIGN SPEED = 30 MPH
POSTED SPEED = 25 MPH

EXISTING IL ROUTE 3 (ST. CLAIR AVE.)
ADT = 9,000 (2008), 26,190 (2030)
DESIGN SPEED = 40 MPH (S. OF TRRA CROSSING)
DESIGN SPEED = 50 MPH (N. OF TRRA CROSSING)
POSTED SPEED = 35 MPH (S. OF TRRA CROSSING)
POSTED SPEED = 45 MPH (N. OF TRRA CROSSING)

1ST STREET
ADT = 1,350 (2008), 1,700 (2030)
DESIGN SPEED = 35 MPH
POSTED SPEED = 30 MPH

PROJECT LOCATED IN: FAIRMONT CITY, ILLINOIS
EAST ST. LOUIS, ILLINOIS

PLANS 1" = 50'
PROFILES 1" = 5'
X-SECTIONS 1" = 10' H
1" = 5' V

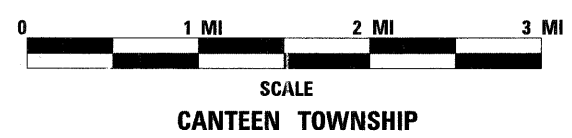
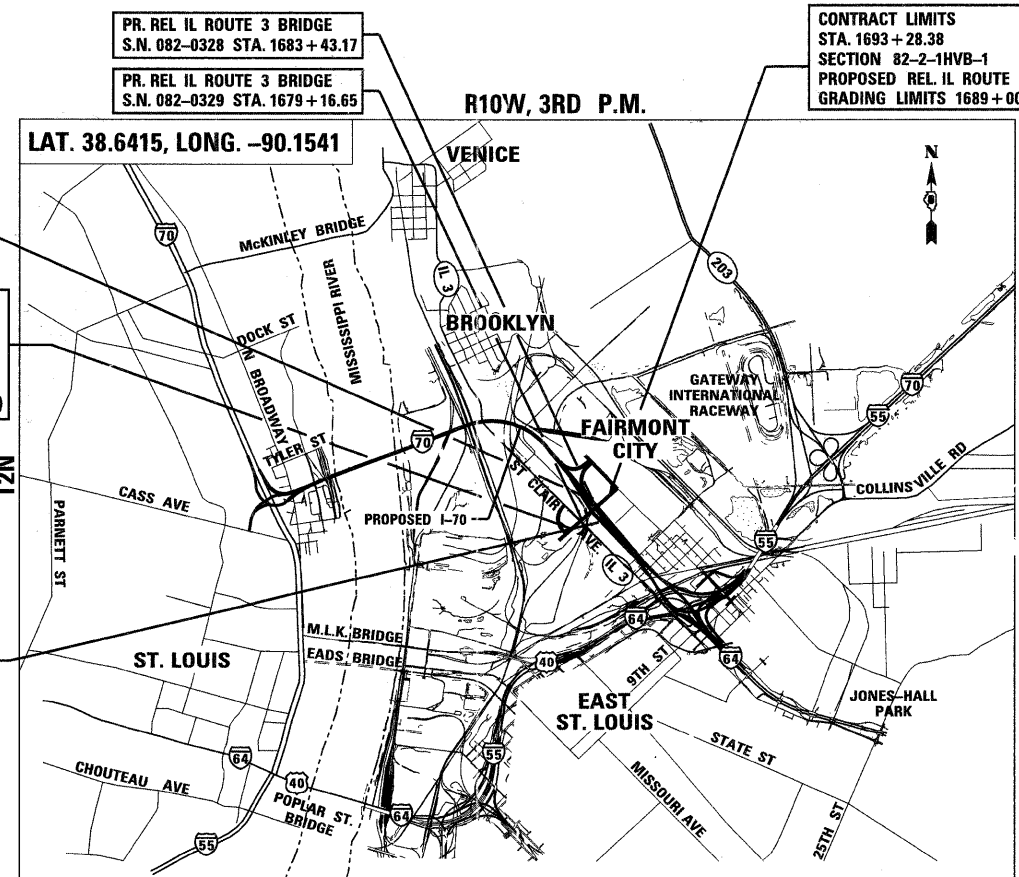


FULL SIZE PLANS HAVE BEEN PREPARED USING STANDARD ENGINEERING SCALES. REDUCED SIZED PLANS WILL NOT CONFORM TO STANDARD SCALES. IN MAKING MEASUREMENTS ON REDUCED PLANS, THE ABOVE SCALES MAY BE USED.

J.U.L.I.E.
JOINT UTILITY LOCATION INFORMATION FOR EXCAVATION
1-800-892-0123
OR 811

PROJECT ENGINEER : MICHAEL D. PRITCHETT (618) 346-3180
PROJECT MANAGER : JANE CHASTAIN MERCER (618) 346-3206

CONTRACT NO. 76D05



GROSS LENGTH OF PROJECT:
0.422 MI (2,228.38')
NET LENGTH OF PROJECT:
0.314 MI (1,656.26')



ROBERT J. STERN
062-040104
LICENSED PROFESSIONAL ENGINEER OF ILLINOIS

EXPIRES: 11/20/11
DATE: 5/5/11
SHEETS: 1-75, 108-114, 313-345

BYRON T. DANLEY
081-004737
LICENSED PROFESSIONAL ENGINEER OF ILLINOIS
CHICAGO, IL

EXPIRES: 11/30/12
DATE: 5/5/11
SHEETS: 122-312

FRANCIS S. MACK
062-042527
LICENSED PROFESSIONAL ENGINEER OF ILLINOIS

EXPIRES: 11/30/11
DATE: 5/5/11
SHEETS: 115-121

TENG
TENG & ASSOCIATES, INC.
ENGINEERS/ARCHITECTS/PLANNERS
205 N. MICHIGAN AVE., CHICAGO, IL 60601
TELEPHONE: 312/616-0000

ABNA engineering

STATE OF ILLINOIS
DEPARTMENT OF TRANSPORTATION
DIVISION OF HIGHWAYS

SUBMITTED May 17 20 11

Ms. C. Lami
DEPUTY DIRECTOR OF HIGHWAYS, REGION ENGINEER

July 1 20 11
Scott E. Stitt, P.E., Ia
Acting ENGINEER OF DESIGN AND ENVIRONMENT

July 1 20 11
Christine M. Reed, Ia
DIRECTOR OF HIGHWAYS, CHIEF ENGINEER

**PRINTED BY THE AUTHORITY
OF THE STATE OF ILLINOIS**