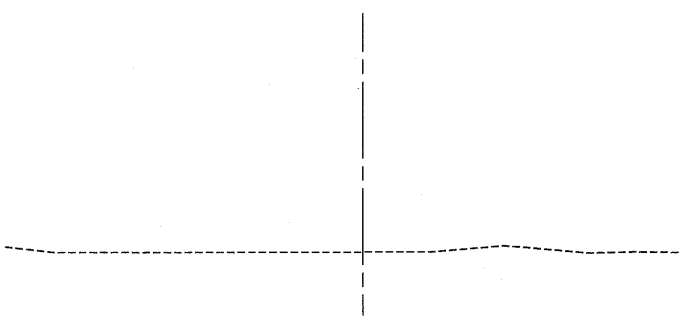


RAMP A

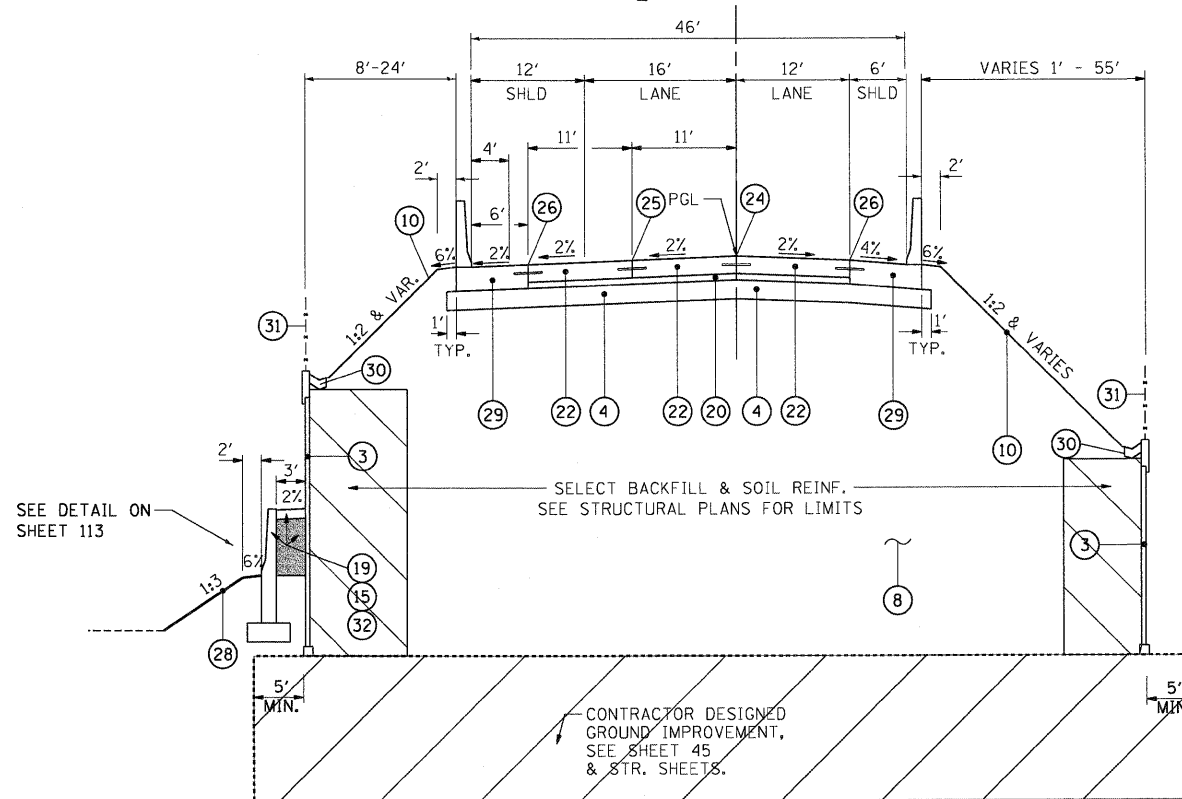
STRUCTURAL DESIGN TRAFFIC:	YEAR	2030	
PV = 9,221	SU = NA	MU = 1,025	
ROAD/STREET CLASSIFICATION:	CLASS	1	
PERCENT OF STRUCTURAL DESIGN TRAFFIC IN DESIGN LANE:	P = 100%	S = NA	M = 100%
TRAFFIC FACTOR	ACTUAL TF = 14.30	AC TYPE = 20	
	MINIMUM TF = 6.70		
PG GRADE:	BINDER = NA	SURFACE = NA	
SUBGRADE SUPPORT RATING:	SSR = POOR		

PR. RAMP A & B



**M** EXISTING RAMP A & B TYPICAL SECTION  
 STA. 17+25.00 TO STA. 25+14.68  
 STA. 50+00.00 TO STA. 58+14.00

PR. RAMP A



**N** PROPOSED RAMP A TYPICAL SECTION  
 STA. 22+19.10 TO STA. 25+14.68

SEE DETAIL ON SHEET 113

SELECT BACKFILL & SOIL REINF. SEE STRUCTURAL PLANS FOR LIMITS

CONTRACTOR DESIGNED GROUND IMPROVEMENT, SEE SHEET 45 & STR. SHEETS.

EXISTING LEGEND

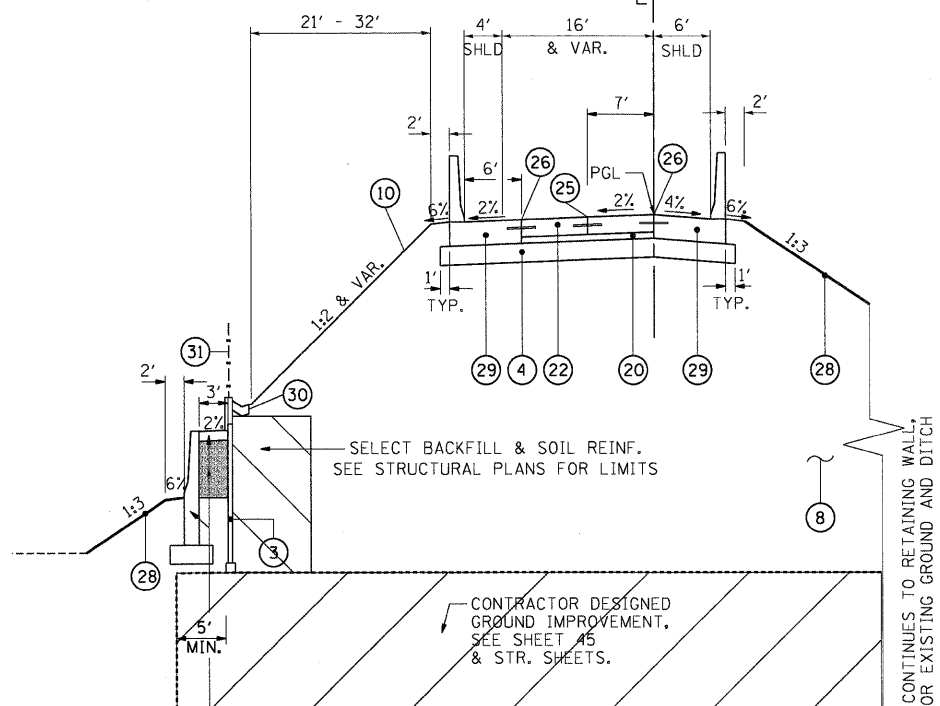
- (A) EXISTING BITUMINOUS PAVEMENT
- (B) EXISTING PCC PAVEMENT
- (C) AGGREGATE SHOULDER
- (D) CURB AND GUTTER
- (E) BITUMINOUS SHOULDER
- (F) TEMPORARY PAVEMENT
- (G) AGGREGATE SUBGRADE

PROPOSED LEGEND

- \* (1) CONTINUOUSLY REINFORCED PORTLAND CEMENT CONCRETE PAVEMENT 11 1/4"
- \* (2) PORTLAND CEMENT CONCRETE SHOULDERS 11 1/4"
- (3) RETAINING WALL
- (4) AGGREGATE SUBGRADE 12"
- \* (5) CONCRETE BARRIER, DOUBLE FACE, 42 INCH HEIGHT
- (6) CONCRETE BARRIER BASE
- \* (7) AGGREGATE SURFACE COURSE, TYPE B, 12"
- (8) EMBANKMENT
- \* (9) HOT-MIX ASPHALT SHOULDERS, 8"
- (10) SEEDING, CLASS 3A
- \* (11) HOT-MIX ASPHALT PAVEMENT (FULL-DEPTH), 12"
- \* (12) COMBINATION CONCRETE CURB AND GUTTER, TYPE B-6.12
- (13) COMBINATION CONCRETE CURB AND GUTTER, TYPE B-6.24
- (14) AGGREGATE SHOULDERS, TYPE B 6"
- (15) CONCRETE BARRIER WALL (SPECIAL)
- \* (16) STEEL PLATE BEAM GUARDRAIL, TYPE A
- (17) CHAIN LINK FENCE, 6'
- \* (18) HOT-MIX ASPHALT SURFACE COURSE, MIX "D", N70
- (19) CONCRETE MEDIAN SURFACE, 4 INCH
- (20) STABILIZED SUBBASE - HOT-MIX ASPHALT, 4"
- \* (21) COMBINATION CONCRETE CURB AND GUTTER, TYPE M-4.24
- (22) PORTLAND CEMENT CONCRETE PAVEMENT 11" (JOINTED)
- (23) PORTLAND CEMENT CONCRETE SHOULDERS 11"
- (24) LONGITUDINAL CONSTRUCTION JOINT WITH NO. 6 TIE BARS AT 24" CTS.
- (25) LONGITUDINAL SAWED JOINT WITH NO. 6 TIE BARS AT 18" CTS.
- (26) LONGITUDINAL CONSTRUCTION JOINT FOR ANCHORAGE SLAB
- (27) AGGREGATE BASE COURSE, TYPE B 4"
- (28) SEEDING, CLASS 7 (SPECIAL)
- (29) ANCHORAGE SLAB & BARRIER WALL (SEE DETAILS FOR BILL OF MATERIALS)
- (30) CONCRETE GUTTER, TYPE B
- (31) CHAIN LINK FENCE, 4' ATTACHED TO STRUCTURE
- (32) POROUS GRANULAR BACKFILL

\* = BY OTHERS  
 [Symbol] = INDICATES PAYMENT INCLUDED IN COST OF ANOTHER ITEM

PR. RAMP B



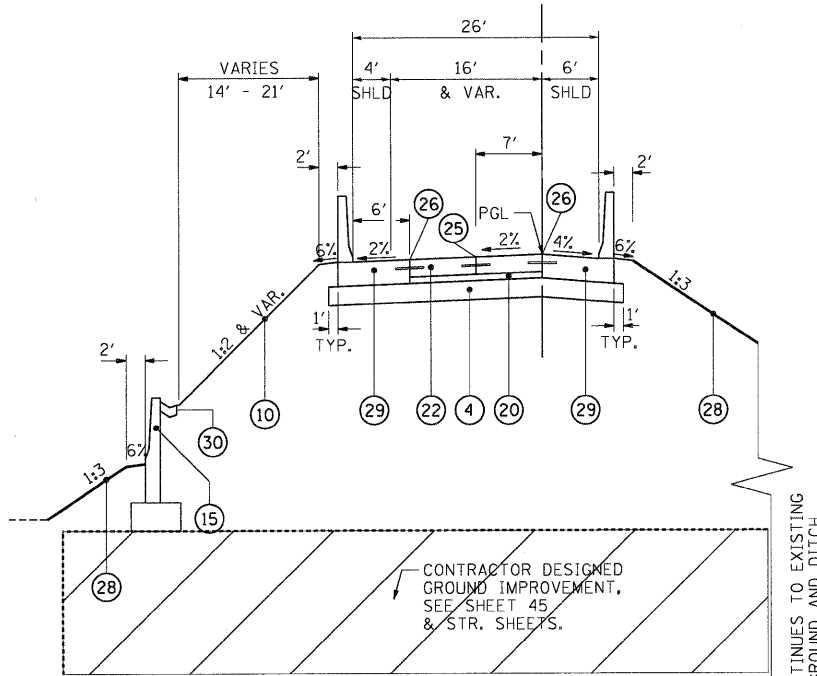
**O** PROPOSED RAMP B TYPICAL SECTION  
 STA. 50+00.00 TO STA. 53+55.61

SELECT BACKFILL & SOIL REINF. SEE STRUCTURAL PLANS FOR LIMITS

CONTRACTOR DESIGNED GROUND IMPROVEMENT, SEE SHEET 45 & STR. SHEETS.

CONTINUES TO RETAINING WALL, OR EXISTING GROUND AND DITCH

PR. RAMP B



**P** PROPOSED RAMP B TYPICAL SECTION  
 STA. 53+55.61 TO STA. 55+37.85

CONTRACTOR DESIGNED GROUND IMPROVEMENT, SEE SHEET 45 & STR. SHEETS.

CONTINUES TO EXISTING GROUND AND DITCH

STATE OF ILLINOIS  
 DEPARTMENT OF TRANSPORTATION  
 RELOCATED ILLINOIS ROUTE 3

PROPOSED RAMPS A & B  
 TYPICAL SECTIONS

FILE NAME =	USER NAME = #USER#	DESIGNED - JB	REVISED -
#FILE#		DRAWN - JFS	REVISED -
	PLOT SCALE = #SCALE#	CHECKED - JB	REVISED -
	PLOT DATE = #DATE#	DATE - 05/13/11	REVISED -



SCALE: N.T.S. SHEET NO. 5 OF 6 SHEETS STA. TO STA.

F.A.P. RTE.	SECTION	COUNTY	TOTAL SHEETS	SHEET NO.
998	82-2-1HVB-1	ST. CLAIR	345	13
FED. ROAD DIST. NO. [ILLINOIS] FED. AID PROJECT			CONTRACT NO. 76D05	