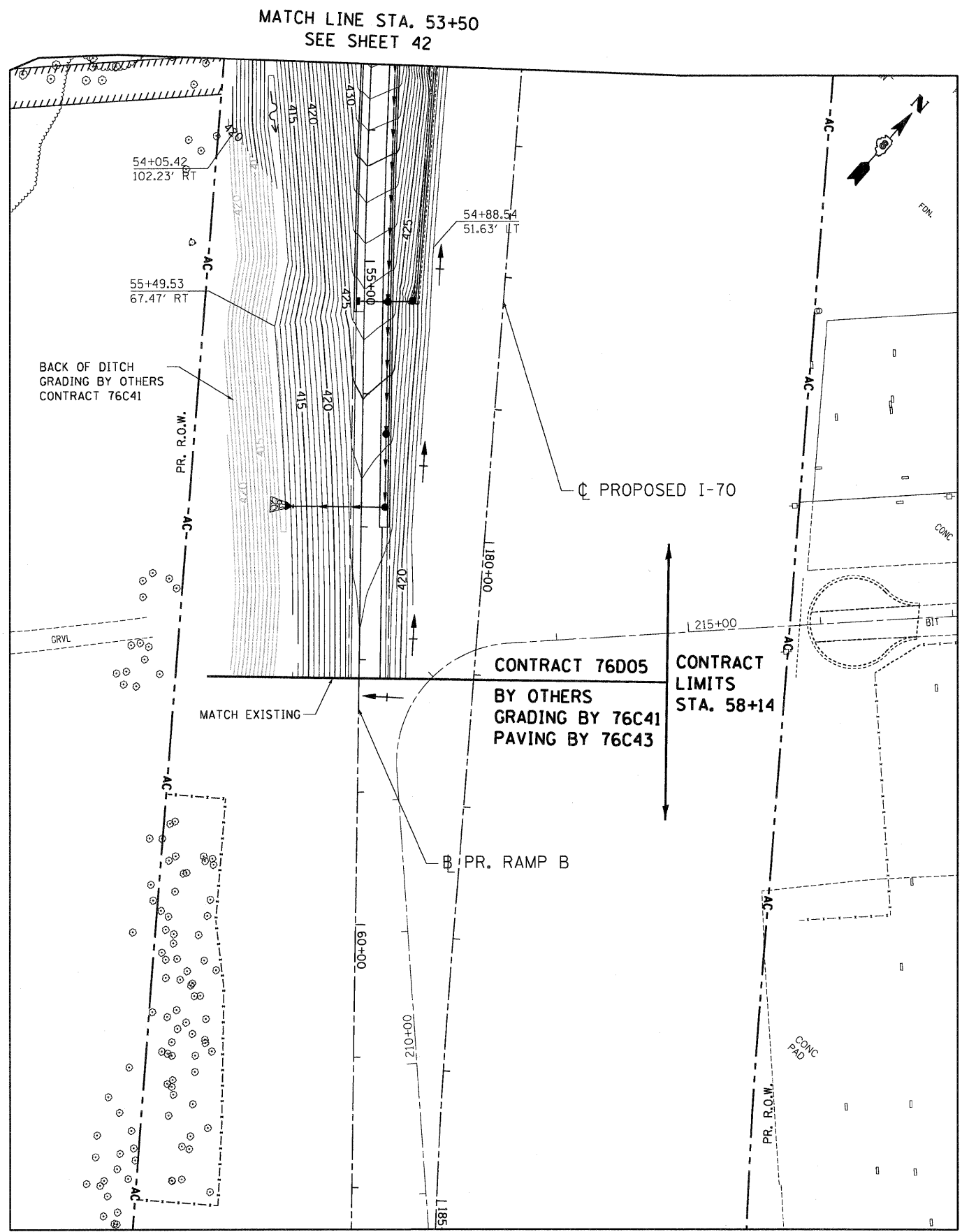
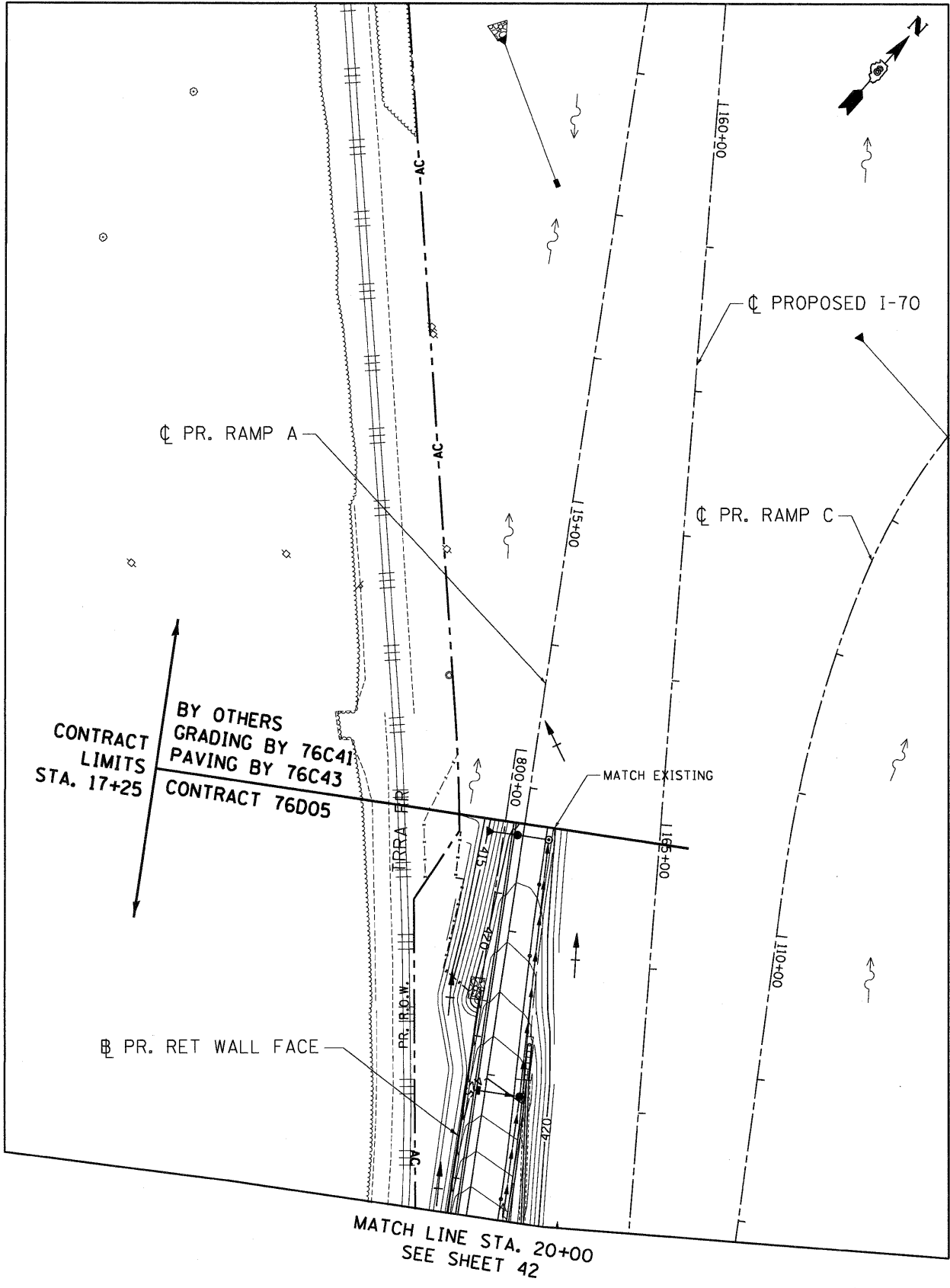


\BDCONN-99-MOTIFIELDN... \BDCONN-10-BORDERLIGN... \BDCONN-11-MOTIFIELDN... \BDCONN-12-LEGENDLIGN... \BDCONN-13-LAYOUTLIGN... \BDCONN-14-LANDSCAPE... \BDCONN-15-CONTRACT... \BDCONN-16-MOTIFIELDN... \BDCONN-17-CONTRACT... \BDCONN-18-SIT-LANDSCAPE... \BDCONN-19-MOTIFIELDN... \BDCONN-20-LEGENDLIGN... \BDCONN-21-LAYOUTLIGN... \BDCONN-22-CONTRACT... \BDCONN-23-CONTRACT... \BDCONN-24-CONTRACT... \BDCONN-25-CONTRACT... \BDCONN-26-CONTRACT... \BDCONN-27-CONTRACT... \BDCONN-28-CONTRACT... \BDCONN-29-CONTRACT... \BDCONN-30-CONTRACT... \BDCONN-31-CONTRACT... \BDCONN-32-CONTRACT... \BDCONN-33-CONTRACT... \BDCONN-34-CONTRACT... \BDCONN-35-CONTRACT... \BDCONN-36-CONTRACT... \BDCONN-37-CONTRACT... \BDCONN-38-CONTRACT... \BDCONN-39-CONTRACT... \BDCONN-40-CONTRACT... \BDCONN-41-CONTRACT... \BDCONN-42-CONTRACT... \BDCONN-43-CONTRACT... \BDCONN-44-CONTRACT... \BDCONN-45-CONTRACT... \BDCONN-46-CONTRACT... \BDCONN-47-CONTRACT... \BDCONN-48-CONTRACT... \BDCONN-49-CONTRACT... \BDCONN-50-CONTRACT... \BDCONN-51-CONTRACT... \BDCONN-52-CONTRACT... \BDCONN-53-CONTRACT... \BDCONN-54-CONTRACT... \BDCONN-55-CONTRACT... \BDCONN-56-CONTRACT... \BDCONN-57-CONTRACT... \BDCONN-58-CONTRACT... \BDCONN-59-CONTRACT... \BDCONN-60-CONTRACT... \BDCONN-61-CONTRACT... \BDCONN-62-CONTRACT... \BDCONN-63-CONTRACT... \BDCONN-64-CONTRACT... \BDCONN-65-CONTRACT... \BDCONN-66-CONTRACT... \BDCONN-67-CONTRACT... \BDCONN-68-CONTRACT... \BDCONN-69-CONTRACT... \BDCONN-70-CONTRACT... \BDCONN-71-CONTRACT... \BDCONN-72-CONTRACT... \BDCONN-73-CONTRACT... \BDCONN-74-CONTRACT... \BDCONN-75-CONTRACT... \BDCONN-76-CONTRACT... \BDCONN-77-CONTRACT... \BDCONN-78-CONTRACT... \BDCONN-79-CONTRACT... \BDCONN-80-CONTRACT... \BDCONN-81-CONTRACT... \BDCONN-82-CONTRACT... \BDCONN-83-CONTRACT... \BDCONN-84-CONTRACT... \BDCONN-85-CONTRACT... \BDCONN-86-CONTRACT... \BDCONN-87-CONTRACT... \BDCONN-88-CONTRACT... \BDCONN-89-CONTRACT... \BDCONN-90-CONTRACT... \BDCONN-91-CONTRACT... \BDCONN-92-CONTRACT... \BDCONN-93-CONTRACT... \BDCONN-94-CONTRACT... \BDCONN-95-CONTRACT... \BDCONN-96-CONTRACT... \BDCONN-97-CONTRACT... \BDCONN-98-CONTRACT... \BDCONN-99-CONTRACT... \BDCONN-100-CONTRACT...



TENG TENG & ASSOCIATES, INC.
 ENGINEERS/ARCHITECTS/PLANNERS
 CHICAGO, ILLINOIS

FILE NAME =	USER NAME = #USER#	DESIGNED - JB	REVISED -
#FILE#		DRAWN - JB	REVISED -
PLOT SCALE = #SCALE#		CHECKED - ACL	REVISED -
PLOT DATE = #DATE#		DATE - 05/13/11	REVISED -

STATE OF ILLINOIS
DEPARTMENT OF TRANSPORTATION
 RELOCATED ILLINOIS ROUTE 3

PROPOSED RAMP A & B
GRADING PLAN
STA. 17 + 25 TO STA. 20 + 00, STA. 53 + 50 TO STA. 58 + 14
 SCALE: 1"=50' SHEET NO. 3 OF 3 SHEETS STA. TO STA.

F.A.P. RTE.	SECTION	COUNTY	TOTAL SHEETS	SHEET NO.
998	82-2-IHVB-1	ST. CLAIR	345	43
FED. ROAD DIST. NO. ILLINOIS FED. AID PROJECT			CONTRACT NO. 76D05	