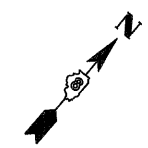


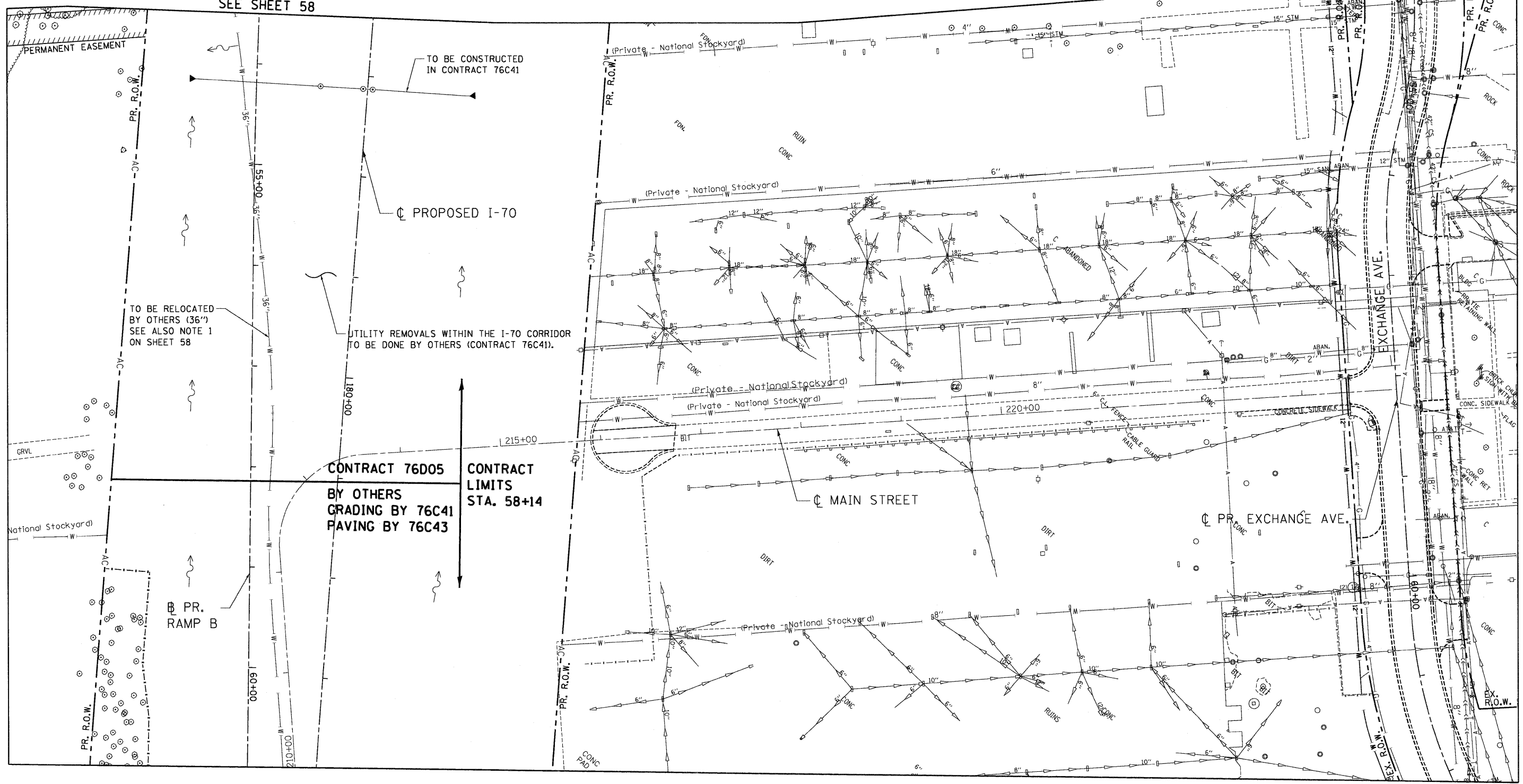
LEGEND

- EX. INLET
- EX. CATCH BASIN
- ⊙ EX. MANHOLE
- ⊠ EX. HANDHOLE
- ▽ EX. STORM SEWER
- EX. SANITARY SEWER
- EX. DITCH
- UNK. UNKNOWN TYPE
- EX. GAS MAIN
- EX. WATER MAIN
- COMBINED SEWER
- LINEAR REMOVAL
- Ⓜ UTILITY STRUCTURE REMOVAL



MATCH LINE STA. 54+00
SEE SHEET 58

MATCH LINE STA. 53+50
SEE SHEET 58



TO BE RELOCATED BY OTHERS (36")
SEE ALSO NOTE 1 ON SHEET 58

TO BE CONSTRUCTED IN CONTRACT 76C41

UTILITY REMOVALS WITHIN THE I-70 CORRIDOR TO BE DONE BY OTHERS (CONTRACT 76C41).

CONTRACT 76D05
BY OTHERS
GRADING BY 76C41
PAVING BY 76C43

PR. RAMP B

**STATE OF ILLINOIS
DEPARTMENT OF TRANSPORTATION**
RELOCATED ILLINOIS ROUTE 3

**PROPOSED RAMP B
EXISTING DRAINAGE & UTILITIES
STA. 53+50 TO STA. 61+00**
SCALE: 1"=50'
SHEET NO. 4 OF 4 SHEETS STA. TO STA.

F.A.P. RTE.	SECTION	COUNTY	TOTAL SHEETS	SHEET NO.
998	82-2-1HB-1	ST. CLAIR	345	60
CONTRACT NO. 76D05				

\NORCON\99-MOTIFLDN... \NORCON\10-LEGEND.DGN... \NORCON\10-LAYOUT.DGN... \NORCON\05-MOTIFLDN... \NORCON\08-MOTIFLDN... \NORCON\10-MOTIFLDN... \NORCON\10-SIT-DRW\11-5359.DGN
 \NORCON\05-MOTIFLDN... \NORCON\10-LEGEND.DGN... \NORCON\10-LAYOUT.DGN... \NORCON\05-MOTIFLDN... \NORCON\08-MOTIFLDN... \NORCON\10-MOTIFLDN... \NORCON\10-SIT-DRW\11-5359.DGN
 \NORCON\05-MOTIFLDN... \NORCON\10-LEGEND.DGN... \NORCON\10-LAYOUT.DGN... \NORCON\05-MOTIFLDN... \NORCON\08-MOTIFLDN... \NORCON\10-MOTIFLDN... \NORCON\10-SIT-DRW\11-5359.DGN



FILE NAME =	USER NAME = #USER#	DESIGNED - JB	REVISED -
#FILE#		DRAWN - JFS	REVISED -
	PLOT SCALE = #SCALE#	CHECKED - ACL	REVISED -
	PLOT DATE = #DATE#	DATE - 05/13/11	REVISED -