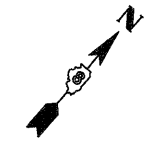


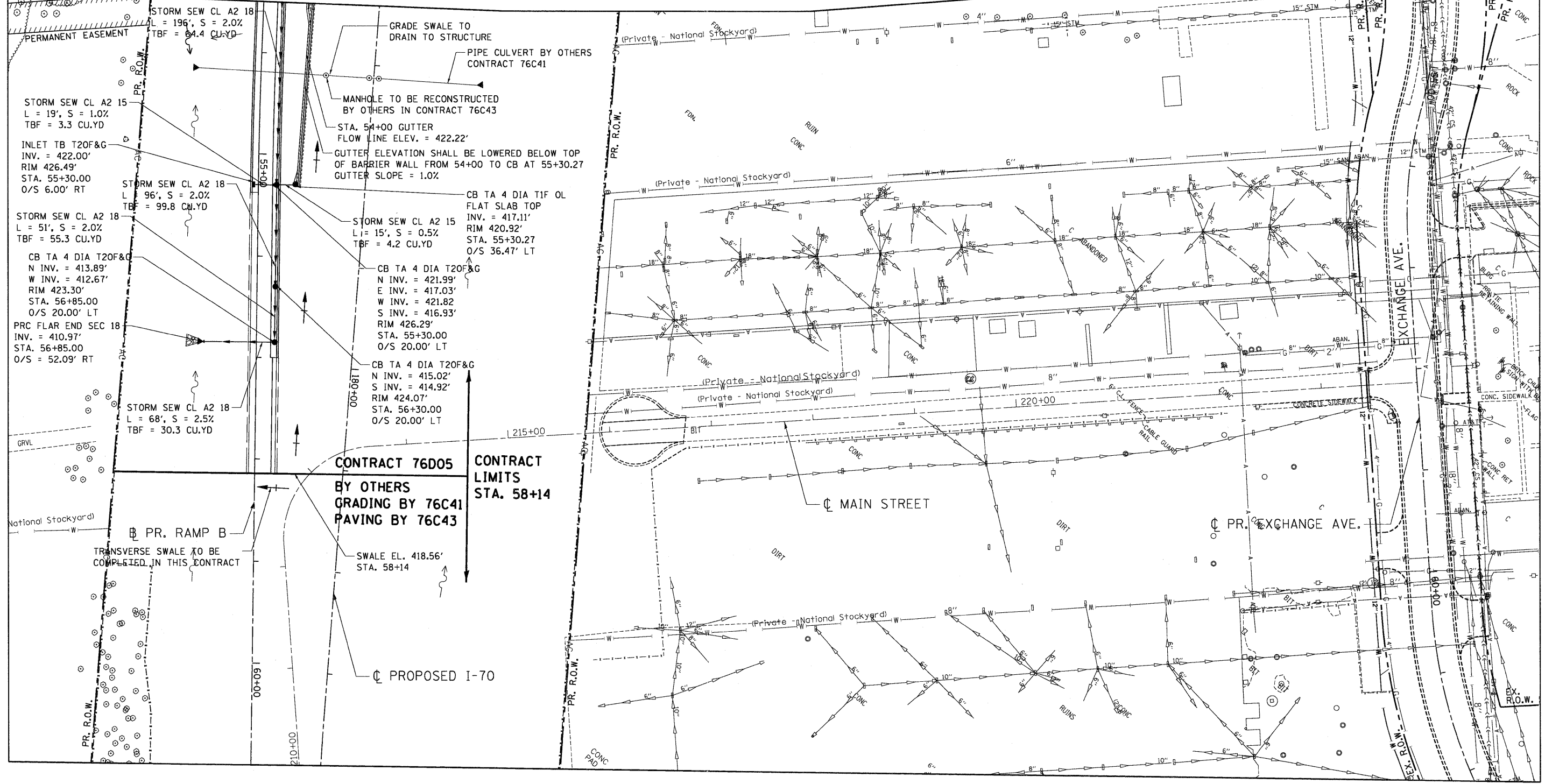
LEGEND

- PROPOSED INLET
- PROPOSED MANHOLE
- PROPOSED CATCH BASIN
- ▶ PROPOSED CULVERT END SECTION
- PROPOSED SWALE
- PROPOSED STORM SEWER
- PROPOSED PIPE UNDERDRAIN
- ↔ PROPOSED SUMMIT
- ~ PROPOSED DITCH



MATCH LINE STA. 54+00
SEE SHEET 63

MATCH LINE STA. 53+50
SEE SHEET 63



NOTES:
1. SEE SHEETS 72 TO 75 FOR DETAILS ON STATION, OFFSET, & RIM LOCATIONS

FILE NAME =	USER NAME = #USER#	DESIGNED - JB	REVISED -	STATE OF ILLINOIS DEPARTMENT OF TRANSPORTATION RELOCATED ILLINOIS ROUTE 3	PROPOSED RAMP B PROPOSED DRAINAGE & UTILITIES STA. 53+50 TO STA. 61+00	F.A.P. RTE. 998	SECTION 82-2-1HB-1	COUNTY ST. CLAIR	TOTAL SHEETS 345	SHEET NO. 65
TENG	TENG & ASSOCIATES, INC. ENGINEERS/ARCHITECTS/PLANNERS CHICAGO, ILLINOIS	DRAWN - JFS	REVISI	SCALE: 1"=50'	SHEET NO. 4 OF 4 SHEETS STA. TO STA.	CONTRACT NO. 76D05 FED. ROAD DIST. NO. ILLINOIS FED. AID PROJECT				
		CHECKED - TKL	REVISI							
		DATE - 05/13/11	REVISI							