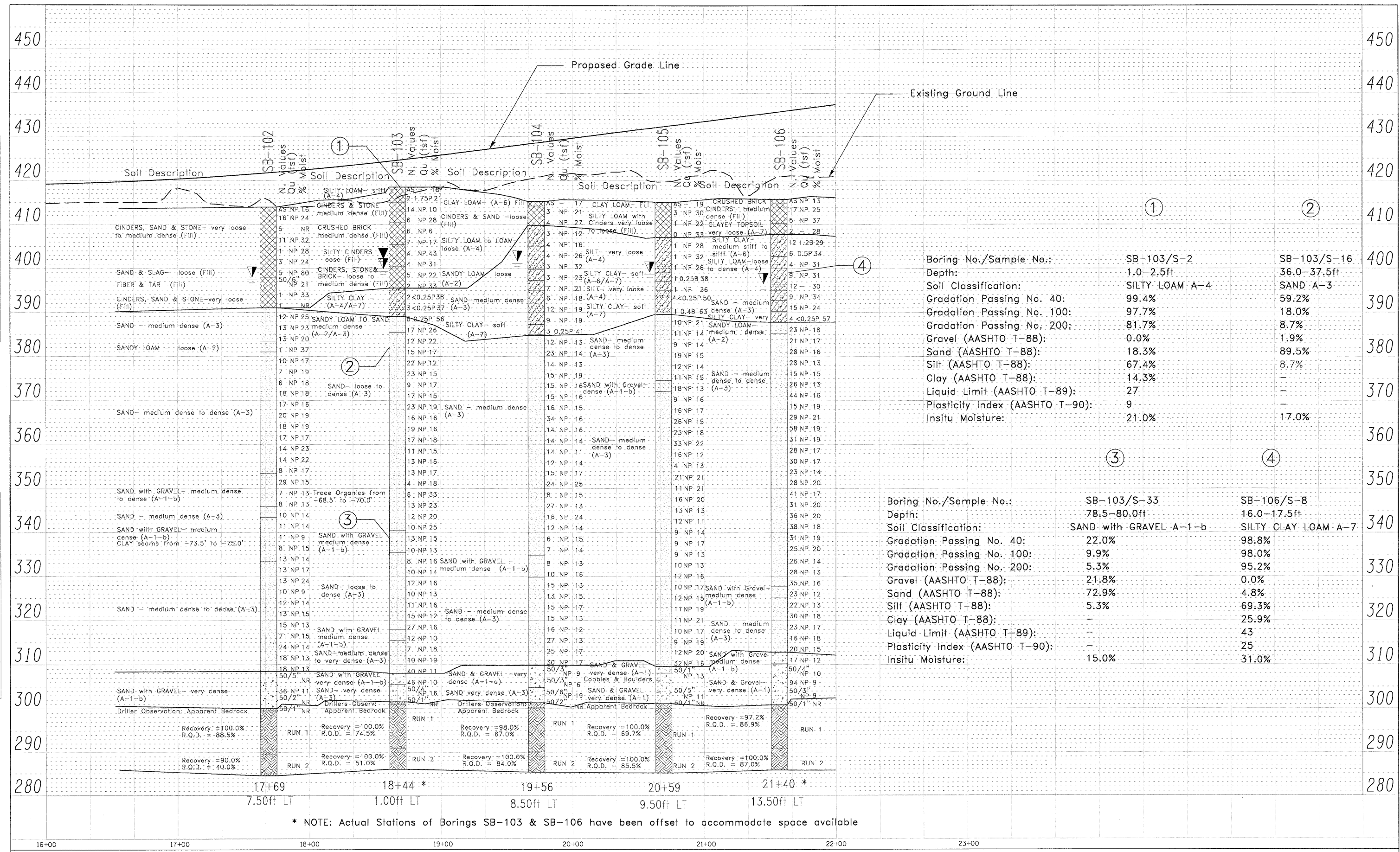


DATE	
BY	
REVISIONS	
NO.	
DESCRIPTION	
DATE	
BY	
REVISIONS	
NO.	
DESCRIPTION	
DATE	
BY	
REVISIONS	
NO.	
DESCRIPTION	

DATE	
BY	
REVISIONS	
NO.	
DESCRIPTION	
DATE	
BY	
REVISIONS	
NO.	
DESCRIPTION	



Boring No./Sample No.:	SB-103/S-2	SB-103/S-16
Depth:	1.0-2.5ft	36.0-37.5ft
Soil Classification:	SILTY LOAM A-4	SAND A-3
Gradation Passing No. 40:	99.4%	59.2%
Gradation Passing No. 100:	97.7%	18.0%
Gradation Passing No. 200:	81.7%	8.7%
Gravel (AASHTO T-88):	0.0%	1.9%
Sand (AASHTO T-88):	18.3%	89.5%
Silt (AASHTO T-88):	67.4%	8.7%
Clay (AASHTO T-88):	14.3%	-
Liquid Limit (AASHTO T-89):	27	-
Plasticity Index (AASHTO T-90):	9	-
Insitu Moisture:	21.0%	17.0%

Boring No./Sample No.:	SB-103/S-33	SB-106/S-8
Depth:	78.5-80.0ft	16.0-17.5ft
Soil Classification:	SAND with GRAVEL A-1-b	SILTY CLAY LOAM A-7
Gradation Passing No. 40:	22.0%	98.8%
Gradation Passing No. 100:	9.9%	98.0%
Gradation Passing No. 200:	5.3%	95.2%
Gravel (AASHTO T-88):	21.8%	0.0%
Sand (AASHTO T-88):	72.9%	4.8%
Silt (AASHTO T-88):	5.3%	69.3%
Clay (AASHTO T-88):	-	25.9%
Liquid Limit (AASHTO T-89):	-	43
Plasticity Index (AASHTO T-90):	-	25
Insitu Moisture:	15.0%	31.0%

* NOTE: Actual Stations of Borings SB-103 & SB-106 have been offset to accommodate space available