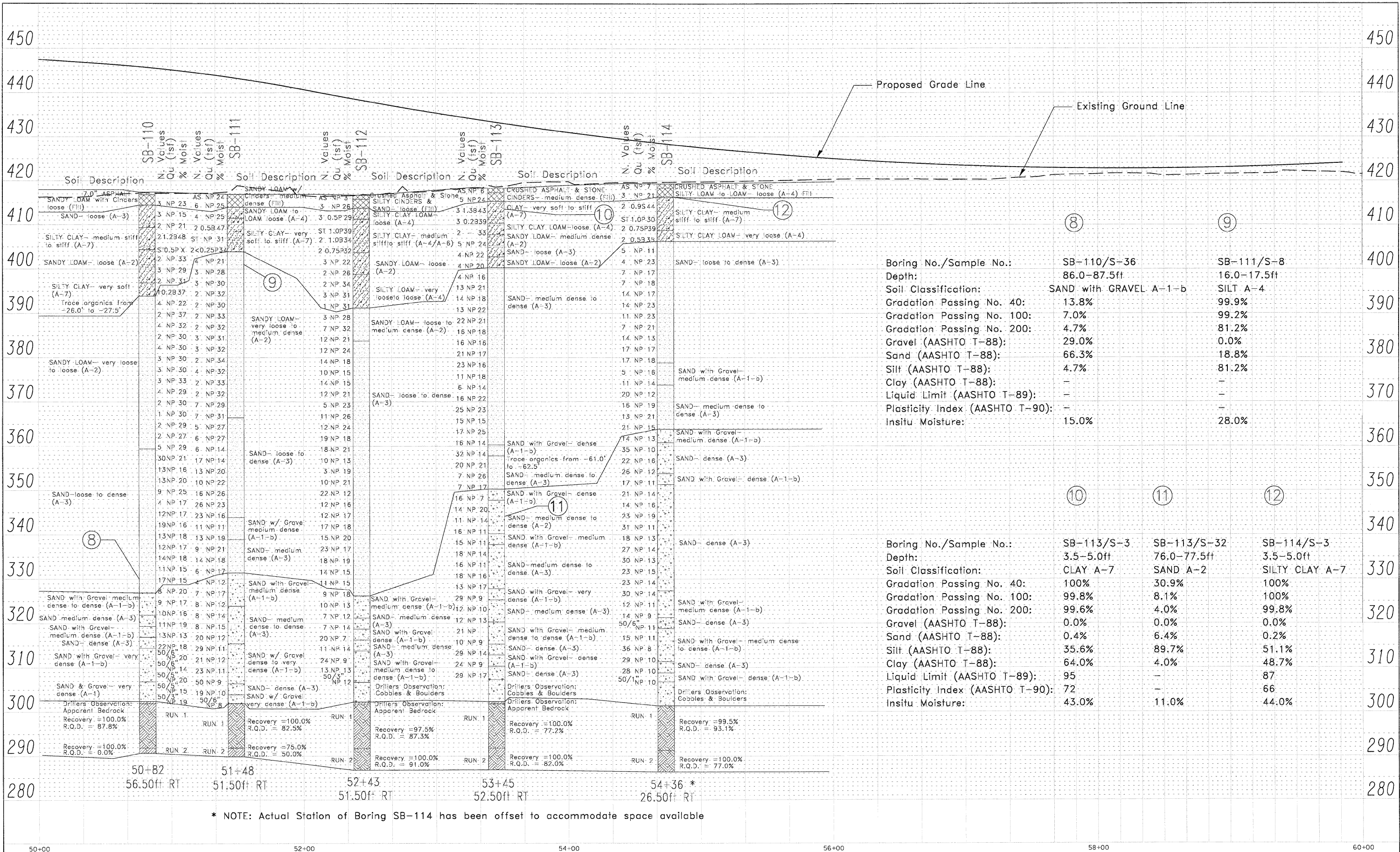


DATE: _____
 BY: _____
 CHECKED: _____
 NO. E. BOX: _____
 NO. OF SHEETS: _____

DATE: _____
 BY: _____
 CHECKED: _____
 NO. E. BOX: _____
 NO. OF SHEETS: _____



Boring No./Sample No.:	SB-110/S-36	SB-111/S-8
Depth:	86.0-87.5ft	16.0-17.5ft
Soil Classification:	SAND with GRAVEL A-1-b	SILT A-4
Gradation Passing No. 40:	13.8%	99.9%
Gradation Passing No. 100:	7.0%	99.2%
Gradation Passing No. 200:	4.7%	81.2%
Gravel (AASHTO T-88):	29.0%	0.0%
Sand (AASHTO T-88):	66.3%	18.8%
Silt (AASHTO T-88):	4.7%	81.2%
Clay (AASHTO T-88):	-	-
Liquid Limit (AASHTO T-89):	-	-
Plasticity Index (AASHTO T-90):	-	-
In situ Moisture:	15.0%	28.0%

Boring No./Sample No.:	SB-113/S-3	SB-113/S-32	SB-114/S-3
Depth:	3.5-5.0ft	76.0-77.5ft	3.5-5.0ft
Soil Classification:	CLAY A-7	SAND A-2	SILTY CLAY A-7
Gradation Passing No. 40:	100%	30.9%	100%
Gradation Passing No. 100:	99.8%	8.1%	100%
Gradation Passing No. 200:	99.6%	4.0%	99.8%
Gravel (AASHTO T-88):	0.0%	0.0%	0.0%
Sand (AASHTO T-88):	0.4%	6.4%	0.2%
Silt (AASHTO T-88):	35.6%	89.7%	51.1%
Clay (AASHTO T-88):	64.0%	4.0%	48.7%
Liquid Limit (AASHTO T-89):	95	-	87
Plasticity Index (AASHTO T-90):	72	-	66
In situ Moisture:	43.0%	11.0%	44.0%

* NOTE: Actual Station of Boring SB-114 has been offset to accommodate space available