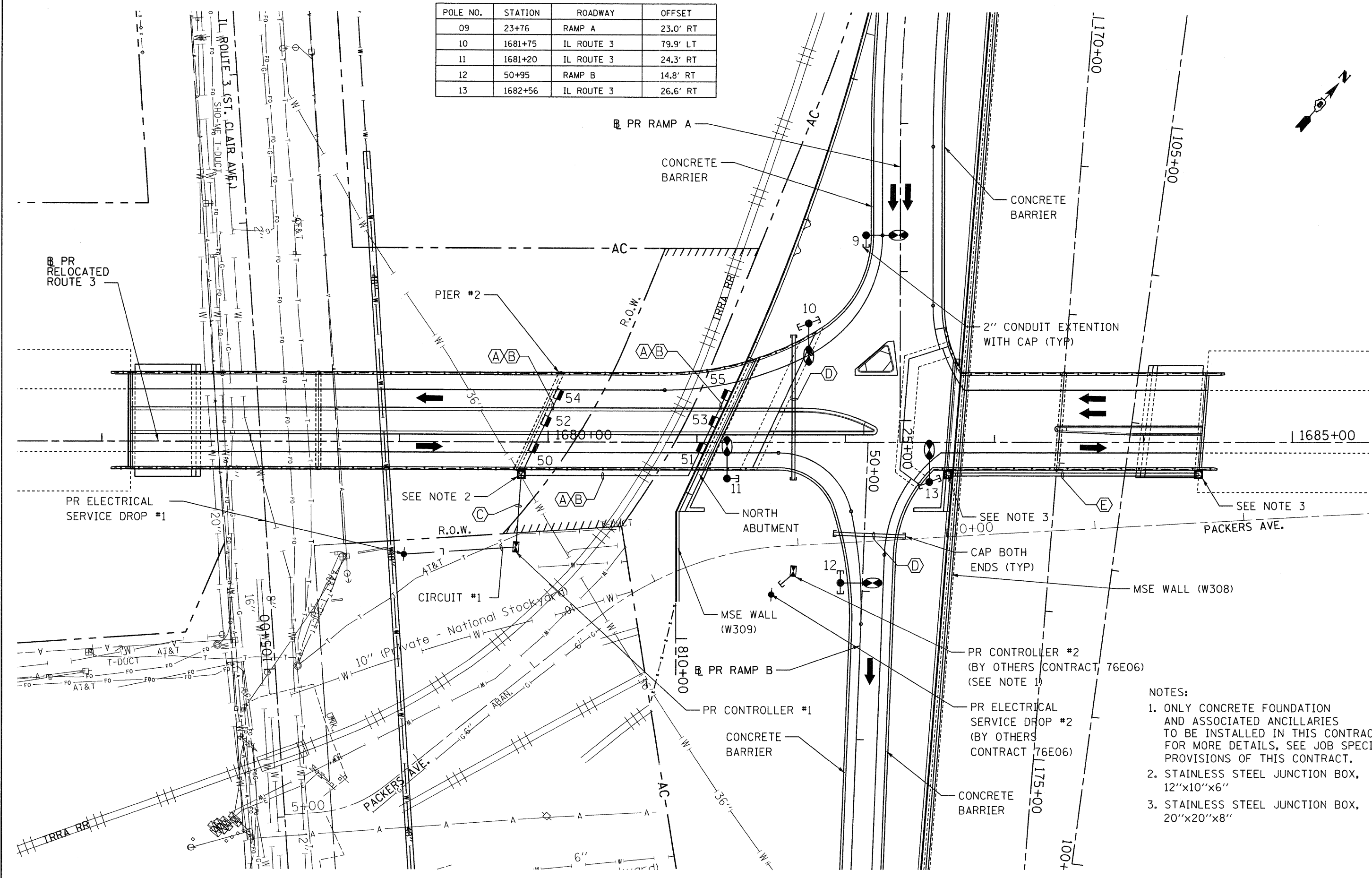


POLE NO.	STATION	ROADWAY	OFFSET
09	23+76	RAMP A	23.0' RT
10	1681+75	IL ROUTE 3	79.9' LT
11	1681+20	IL ROUTE 3	24.3' RT
12	50+95	RAMP B	14.8' RT
13	1682+56	IL ROUTE 3	26.6' RT



- NOTES:
1. ONLY CONCRETE FOUNDATION AND ASSOCIATED ANCILLARIES TO BE INSTALLED IN THIS CONTRACT. FOR MORE DETAILS, SEE JOB SPECIAL PROVISIONS OF THIS CONTRACT.
 2. STAINLESS STEEL JUNCTION BOX, 12"x10"x6"
 3. STAINLESS STEEL JUNCTION BOX, 20"x20"x8"

FILE NAME = #FILE#	USER NAME = #USER#	DESIGNED - FSM	REVISED -	STATE OF ILLINOIS DEPARTMENT OF TRANSPORTATION RELOCATED ILLINOIS ROUTE 3	PROPOSED RELOCATED ILLINOIS ROUTE 3 LIGHTING PLAN STA. 1677+00 TO STA. 1685+00		F.A.P. RTE. 998	SECTION 82-2-1HVB-1	COUNTY ST. CLAIR	TOTAL SHEETS 345	SHEET NO. 116
ABNA ENGINEERING INC. PROFESSIONAL ENGINEERS EAST ST. LOUIS, ILLINOIS	PLOT SCALE = #SCALE#	DRAWN - MNR/KAD	REVISED -		SCALE: 1"=30'	SHEET NO. 1 OF 1 SHEETS	STA. TO STA.	FED. ROAD DIST. NO.	ILLINOIS FED. AID PROJECT	CONTRACT NO. 76D05	
ABNA engineering	PLOT DATE = #DATE#	CHECKED - AAB	REVISED -								
		DATE - 5/13/11	REVISED -								