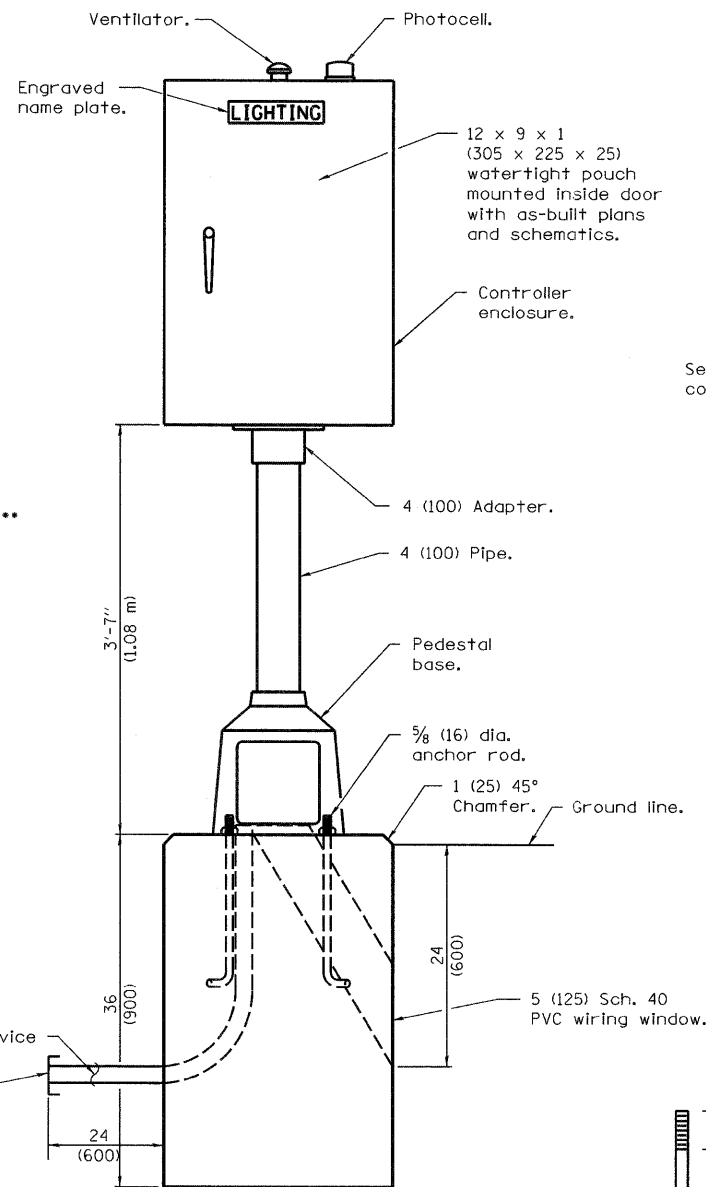


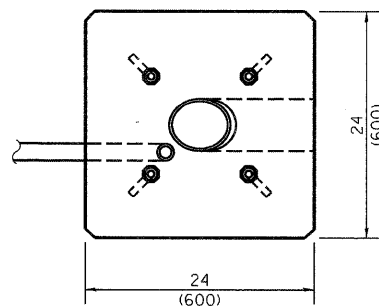
240/480 V ELECTRIC SERVICE INSTALLATION #2

- Size larger as needed.
- ** Or as directed by Utility Company.
- *** When cold sequencing is required, provide a meter disconnect switch as directed by Utility Company.

NIC



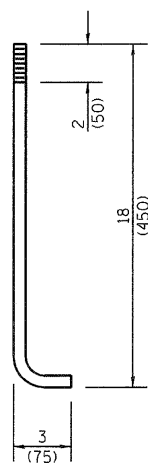
LIGHTING CONTROLLER



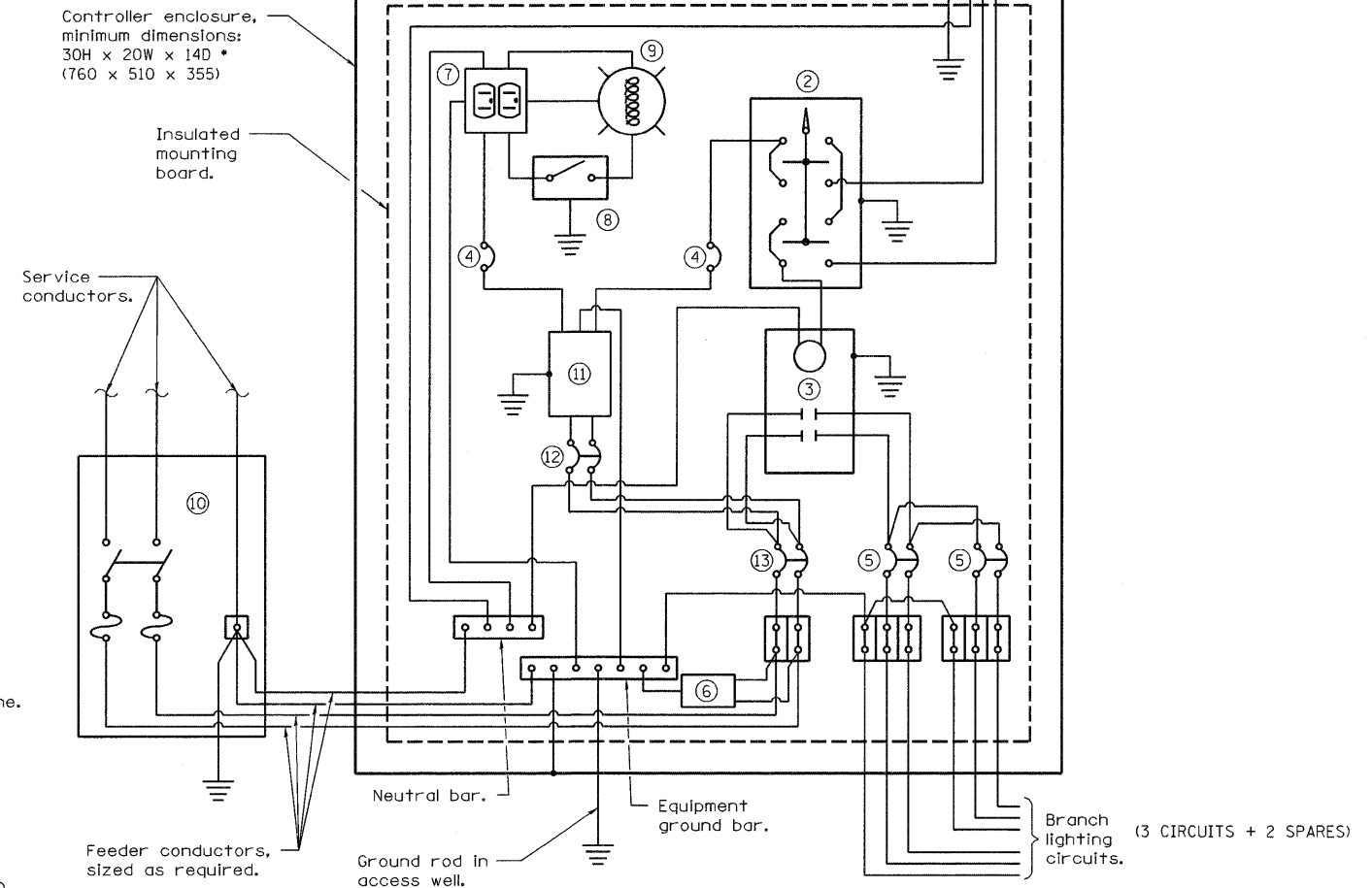
FOUNDATION (PLAN)

(Work pad not shown.)

• Controller #2 foundation shall have the power supply conduit installed and capped 2' from foundation for future use.



ANCHOR ROD DETAIL



CONTROL SCHEMATIC

- | | |
|---|--|
| ① Photocell with integral surge arrester. | ⑧ Single-pole, single-throw switch. |
| ② HAND-OFF-AUTO selector switch. | ⑨ Incandescent luminaire, enclosed and gasketed with 100 watt lamp. |
| ③ 100 amp*, electrically held contactor. | ⑩ Service disconnect switch - 2-pole, 3-wire, 60 amp*, fused at 60 amp*, solid neutral in NEMA 4X enclosure having lockable external handle. |
| ④ 15 amp, 1-pole circuit breaker. | ⑪ Transformer - 1KVA*, 480V primary, 120/240V secondary, single-phase, 60Hz. |
| ⑤ 20 amp*, 2-pole circuit breaker (one additional and two spares required but not shown). | ⑫ 15 amp, 2-pole circuit breaker. |
| ⑥ Surge arrester. | ⑬ 60 amp*, 2-pole circuit breaker. |
| ⑦ GFCI duplex receptacle. | |

• Size larger as needed.

All dimensions are in inches (millimeters) unless otherwise shown.

CONTROLLER #2

(Install concrete foundation only in this contract)

 FILE NAME =
 #FILE#

 USER NAME = #USER#
 DESIGNED - FSM
 DRAWN - MNR
 CHECKED - AAB
 DATE - 5/13/11
 REVISED -
 REVISED -
 REVISED -
 REVISED -

 ABNA ENGINEERING INC.
 PROFESSIONAL ENGINEERS
 EAST ST. LOUIS, ILLINOIS

 STATE OF ILLINOIS
 DEPARTMENT OF TRANSPORTATION
 RELOCATED ILLINOIS ROUTE 3
 CONTROL INSTALLATION
 SCALE: SHEET NO. 2 OF 2 SHEETS STA. TO STA.
 F.A.P. RTE. 998 SECTION 82-2-1HVB-1 COUNTY ST. CLAIR TOTAL SHEETS 345 SHEET NO. 120 CONTRACT NO. 76D05 ILLINOIS FED. AID PROJECT