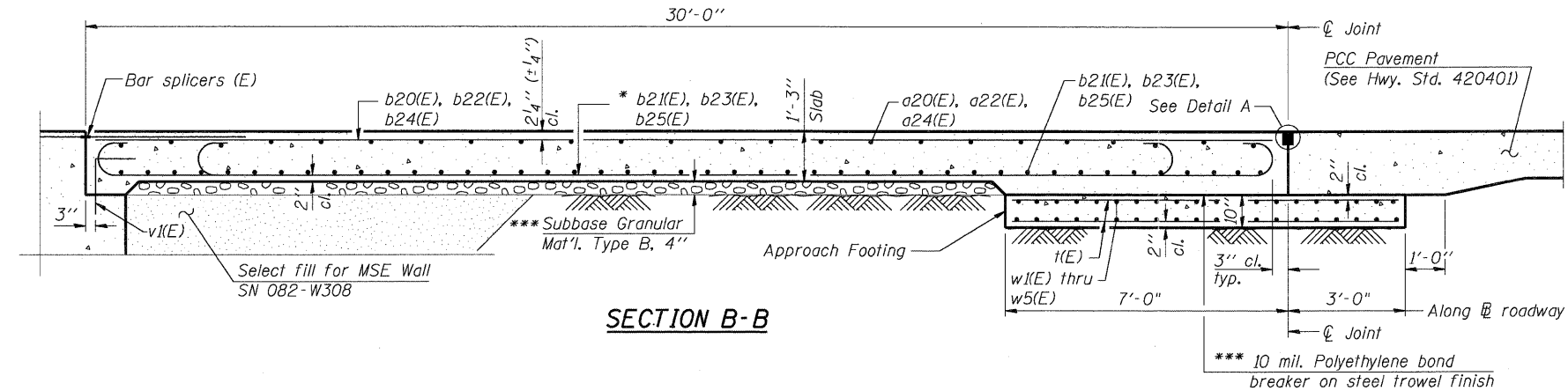


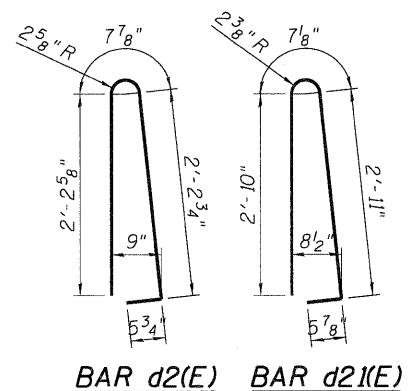
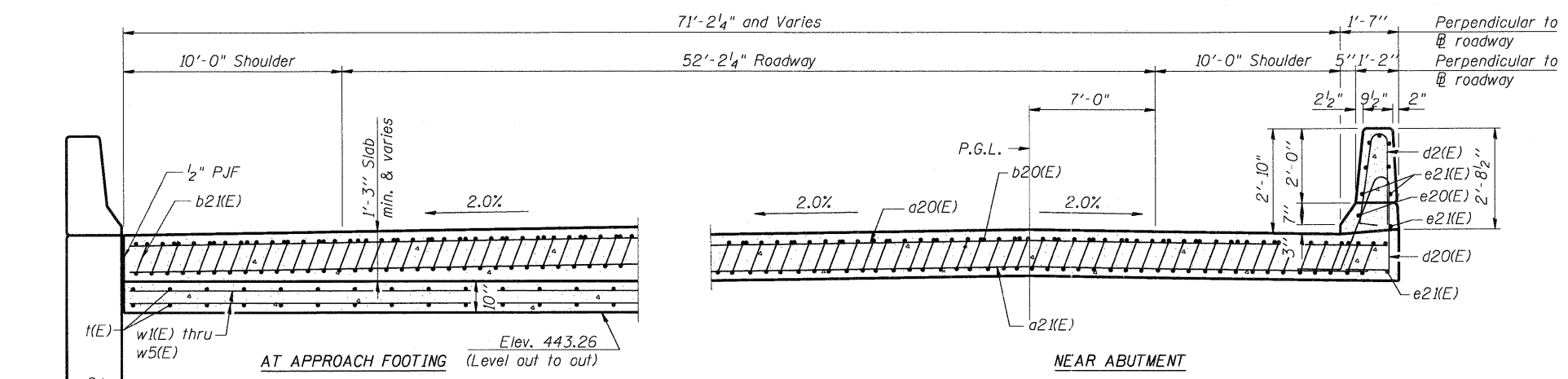
BILL OF MATERIAL

Bar	No.	Size	Length	Shape
a20(E)	50	#4	38'-0"	
a21(E)	92	#5	38'-2"	
a22(E)	23	#4	11'-9"	
a23(E)	42	#5	12'-0"	
a24(E)	18	#4	12'-9"	
a25(E)	32	#5	13'-0"	
b20(E)	60	#4	29'-8"	
b21(E)	178	#9	29'-9"	
b22(E)*	4	#4	31'-2"	
b23(E)*	11	#9	31'-2"	
b24(E)*	4	#4	23'-8"	
b25(E)*	11	#9	23'-8"	
d2(E)	12	#5	5'-7"	
d20(E)	26	#5	7'-11"	
d21(E)	16	#5	6'-10"	
e20(E)	1	#8	21'-11"	
e21(E)	8	#4	21'-11"	
e22(E)	3	#4	13'-11"	
t(E)	236	#4	9'-8"	
w1(E)	40	#5	23'-0"	
w2(E)	40	#5	18'-0"	
w3(E)	80	#5	35'-0"	
w4(E)	40	#5	16'-6"	
w5(E)	40	#5	13'-4"	
Protective Coat		Sq. Yd.	226	
Bridge Deck Grooving		Sq. Yd.	274	
Concrete Superstructure		Cu. Yd.	117.0	
Concrete Structures		Cu. Yd.	35.5	
Reinforcement Bars, Epoxy Coated		Pound	35,620	

*Cut bars according to cutting diagrams.

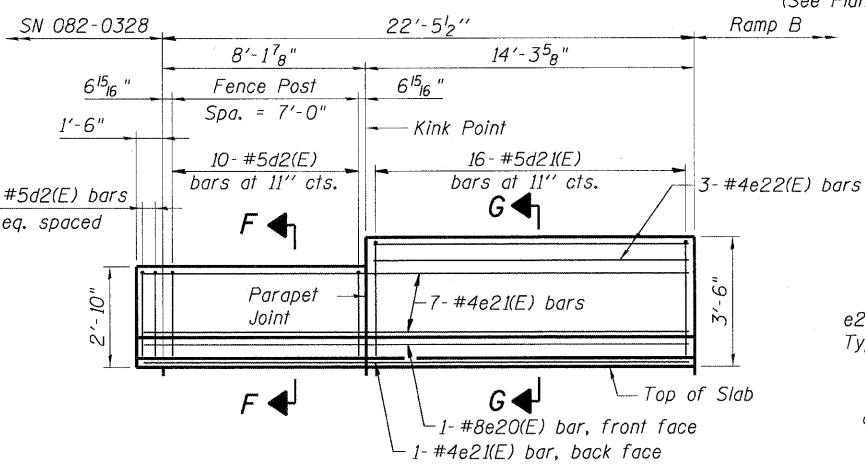


* Tilt #9b21(E) bars as required to maintain clearance.
 *** Cost included with Concrete Superstructure.

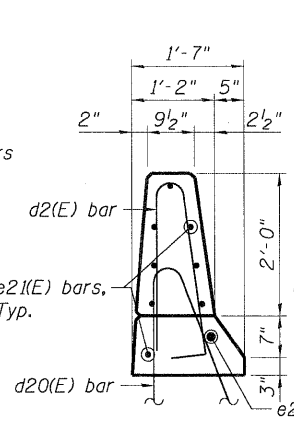


SECTION C-C

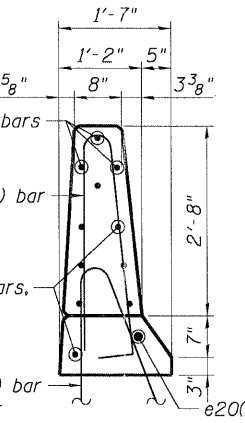
(See Plan For dimensions not shown)



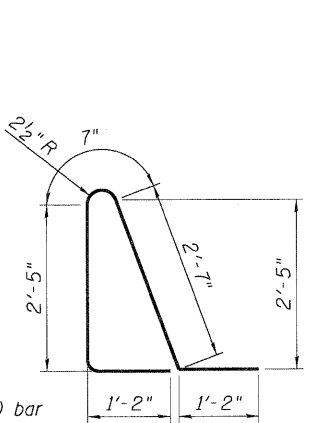
VIEW D-D
(Along inside face of parapet, unfolded)



SECTION F-F

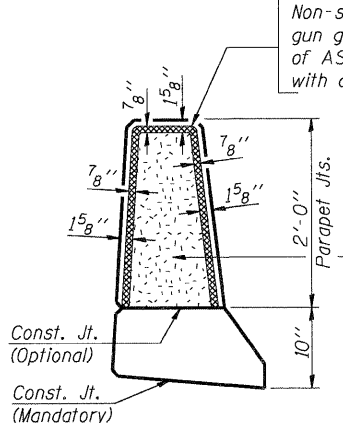


SECTION G-G



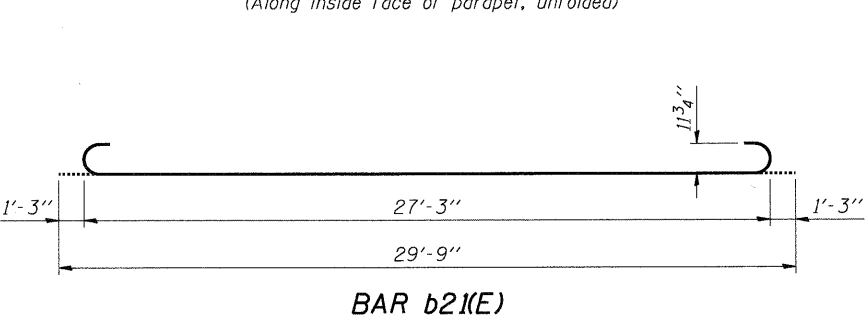
BAR d20(E)

Non-staining gray one component non-sag elastomeric gun grade polyurethane sealant meeting the requirements of ASTM C-920, Type S, Grade NS, Class 25. Use T with a 5/8" backer rod.

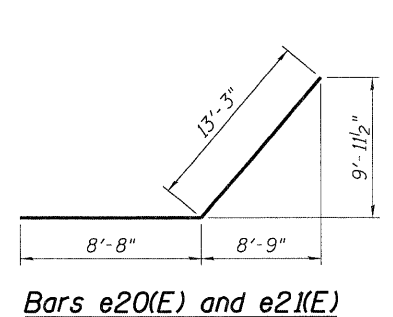


1/2" Preformed Self-Expanding Cork Joint Filler according to Article 1051.07 of the Std. Spec. Cost included with Concrete Superstructure.

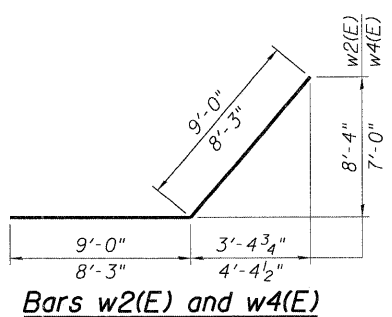
PARAPET JOINT DETAILS



BAR b21(E)



Bars e20(E) and e21(E)



Bars w2(E) and w4(E)

NOTES:

- See sheet SA-15 for Detail A and View E-E.
- Approach slab and parapet concrete shall be paid for as Concrete Superstructure.
- Approach footing concrete shall be paid for as Concrete Structures.
- Reinforcement shall be paid for as Reinforcement Bars, Epoxy Coated.
- For v1(E) bar details, see sheet SA-23.
- The approach footing maximum applied service bearing pressure (Qmax) = 2.0 ksf.
- For bar splicer details, see sheet SA-32.
- Cost of excavation for approach footing included with Concrete Structures.
- Cost of P/JF included with Concrete Superstructure.
- For bridge fence details, see Sht. SA-34.

10/20/18 CONN 99 001 RD DCH REPAIR AND N:\S\8044\AM\VALU I.D-TRANS 07\2202\200808 08\1\STRUCT\CD\01 DESIGN\0820328\SHEET\0820328-CONN-10-003-SHT-AP.DGN
 5-11-2011 9:53:02